

MAPS & AERIAL PHOTOGRAPHS

Smith Hill Pass: 1940

December 5, 2011

Maps

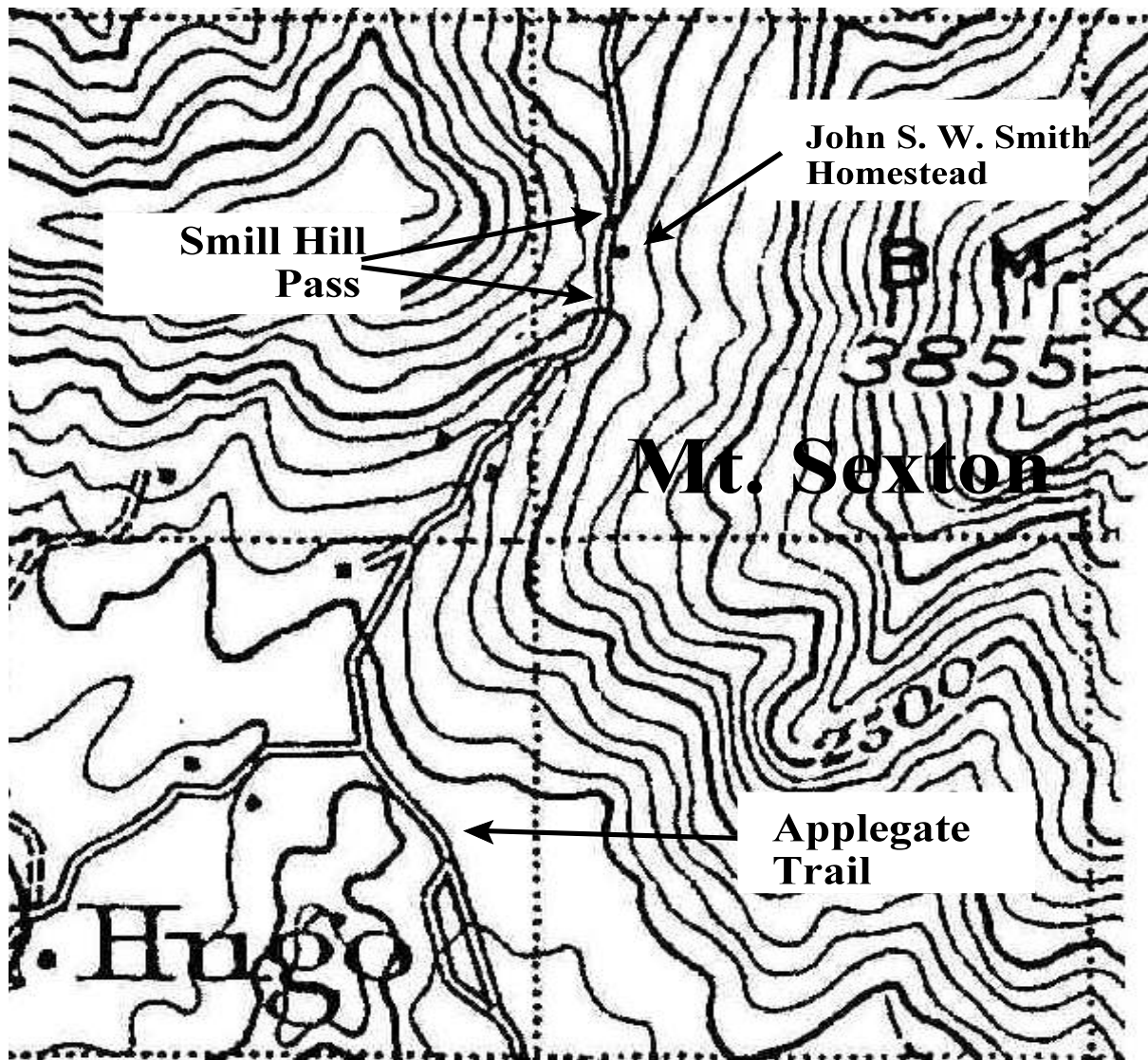
- Map 1. Smith Hill Pass Of Applegate Trail: 1901 - 1902
- Map 2. Old Smith Homestead At Smith Hill Pass: 1940
- Map 3. County Roads South Of Smith Hill Pass: 1940
- Map 4A. 310' Segment of Applegate Trail at Mt. Sexton Pass: 1998

Aerial Photographs

- Aerial 1A. Smith Hill Pass: 1939
- Aerial 1B. Smith Hill Pass With Geographic Features: 1939
- Aerial 2A. Sexton Mountain Pass Region: 1959
- Aerial 2B. Sexton Mountain Pass (Focus): 1959

Map 1. Old Smith Hill Pass Of Applegate Trail: 1901 - 1902

November 2, 2011



Map 1. Old Smith Hill Pass: 1901 - 1902

Base Map: 1923 Riddle Quadrangle

The Smith Hill Pass is contained between the 2,000' and 2,100' Contours.
The John S. W. Homestead House is adjacent to the Applegate Trail.

USGS. Edition of 1904, reprinted 1923. *Riddle Quadrangle*. Surveyed in 1901 - 1902.
Scale 1: 250,000 (Contour interval 100 feet).

Map 2. Old Smith Homestead At Smith Hill Pass: 1940

November 11, 2011

Hugo Emigrant Trails Committee

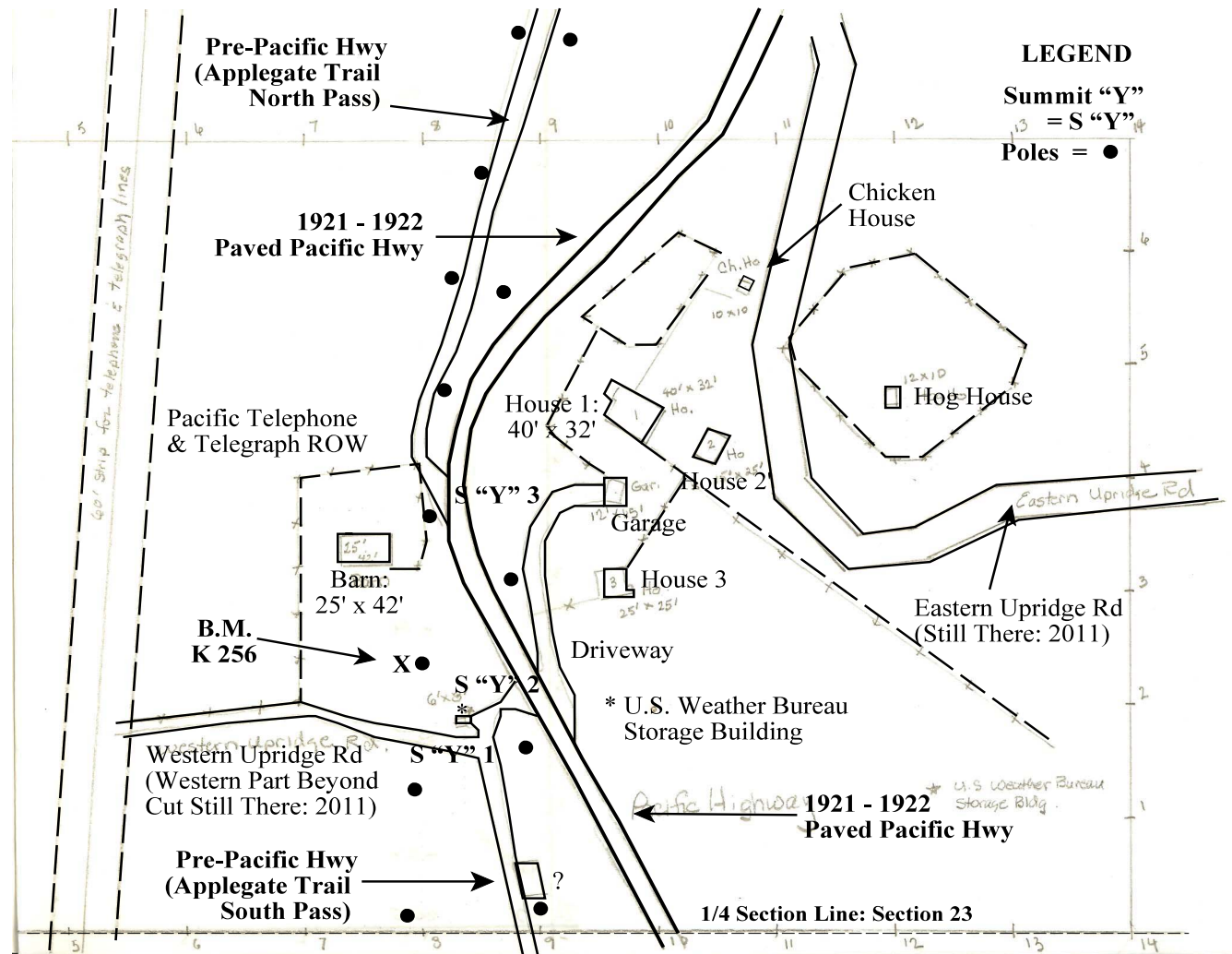
1933 According to Harrington, the original summit was 2,046' "According to a sign that was there when Harrington visited in November, 1933, the elevation of the pass was 2,046'."

1934 Bench Mark (B.M.) K 256 In 1934 B.M. K 256, with an elevation of 2,053.724', used to be near the summit of Sexton Mountain Pass along the old Pacific Highway, south of milepost 264, 84 feet west of highway, 87 feet south of pole barn, near pole in barnyard, and in rock outcrop (Section II.F.1.).

1940 Map: Oregon State Highway Department. August 1940. *Right of Way Map, Sexton Mt. Section. Pacific Highway, Josephine County.* Scale 1" = 100'. Part 1 of 2, Drg. No. 5B-28-11

"Y" Junction of Pre-Pacific Highway (Applegate Trail North Pass) and the paved 1921 - 1922 Pacific Highway was assumed to be the Smith Hill Summit.

According to Harrington, the original summit was 2,046' "According to a sign that was there when Harrington visited in November, 1933, the elevation of the pass was 2,046'."⁴

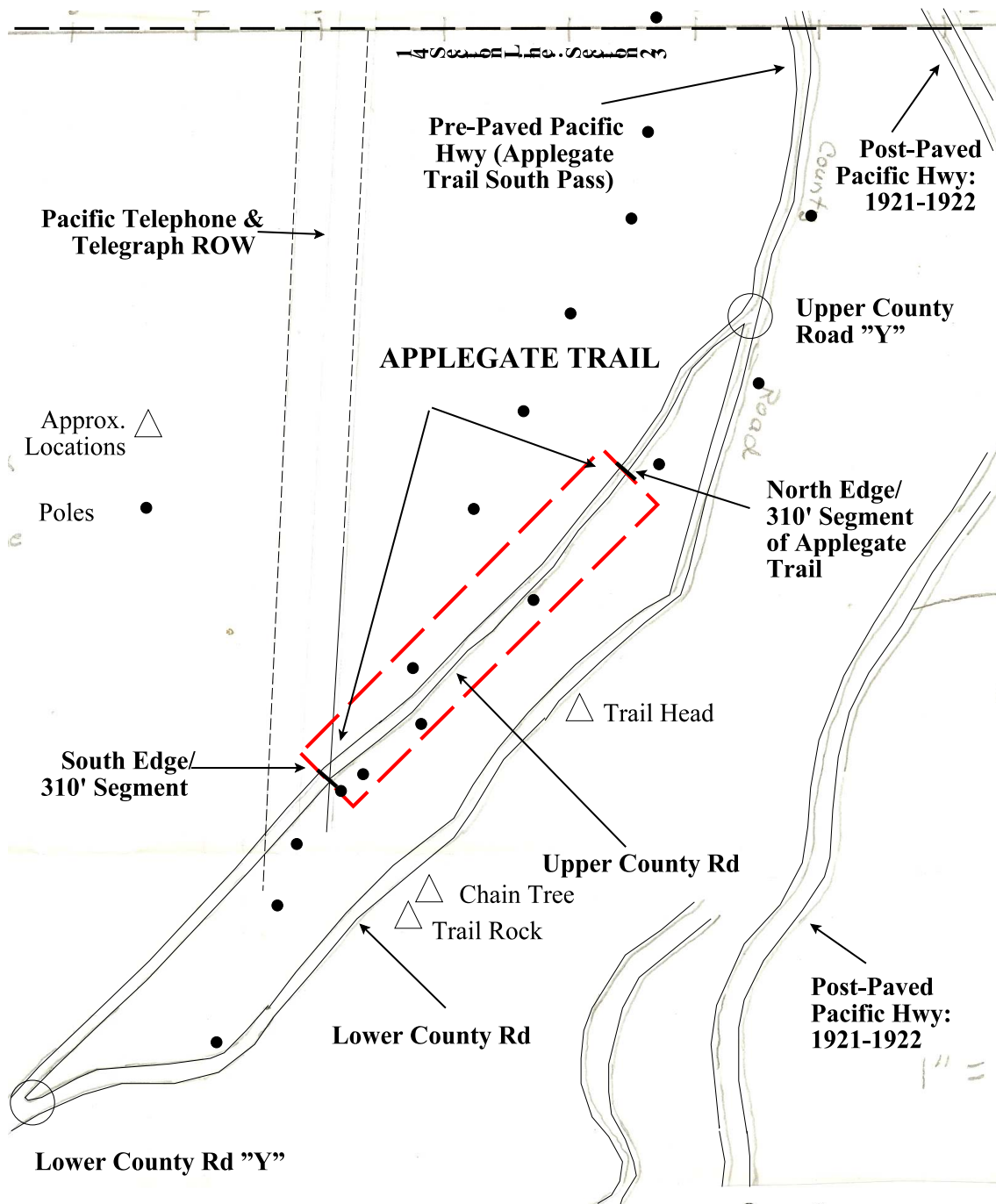


Map 2. Old Smith Homestead At Smith Hill Pass: 1940

Base Map Oregon Pacific Highway Map: 1940

Map 3. County Roads South Of Smith Hill Pass: 1940

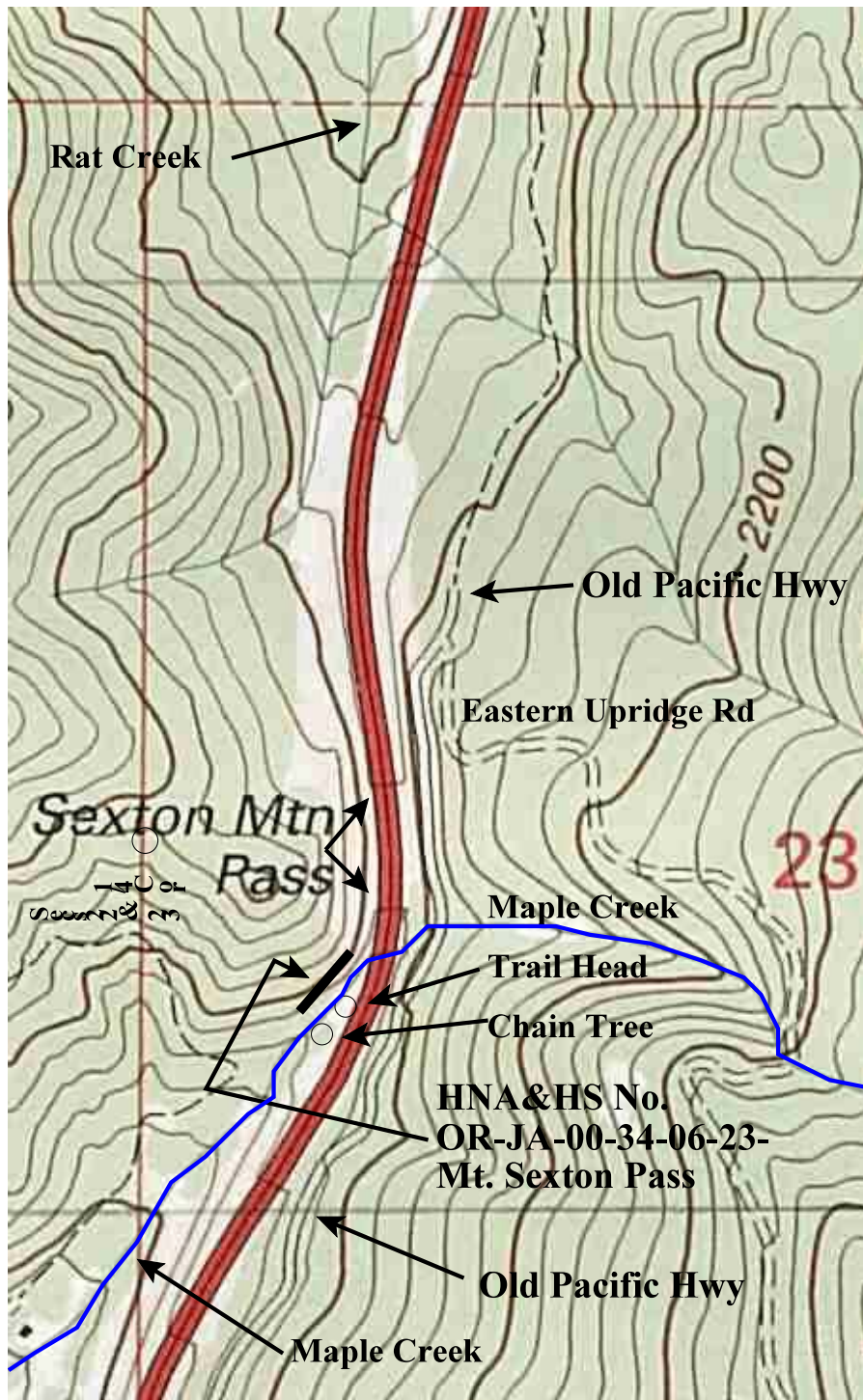
December 5, 2011



Map 3. County Roads & Pacific Hwy South Of Smith Hill Pass: 1940
Base Map Oregon Pacific Highway Map: 1940

Oregon State Highway Department. August 1940. *Right of Way Map, Sexton Mt. Section. Pacific Highway, Josephine County.* Scale 1" = 100'. Part 1 of 2, Drg. No. 5B-28-11

Map 4A. 310' Segment of Applegate Trail at Mt. Sexton Pass
(HNA&HS No. OR-JA-00-34-06-23-Mt. Sexton Pass)
(1998 USGS Base Map)

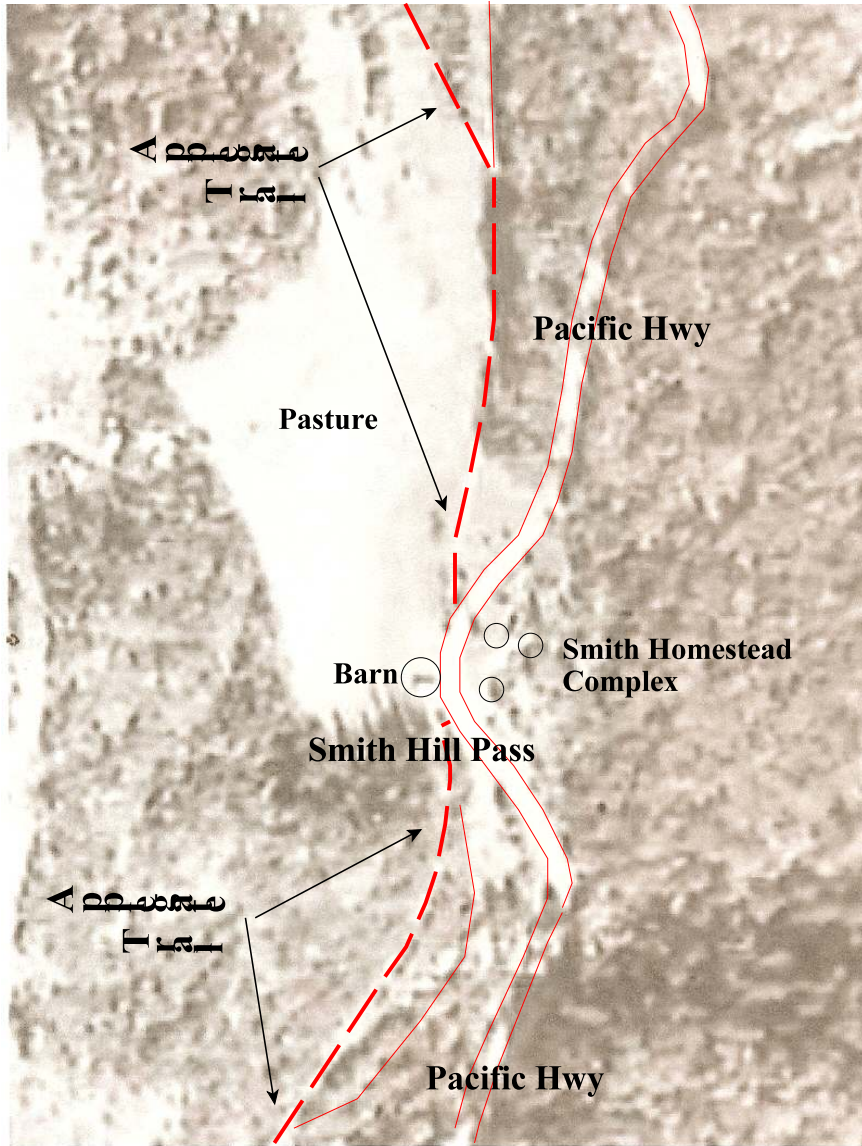


Aerial 1A. Smith Hill Pass: 1939



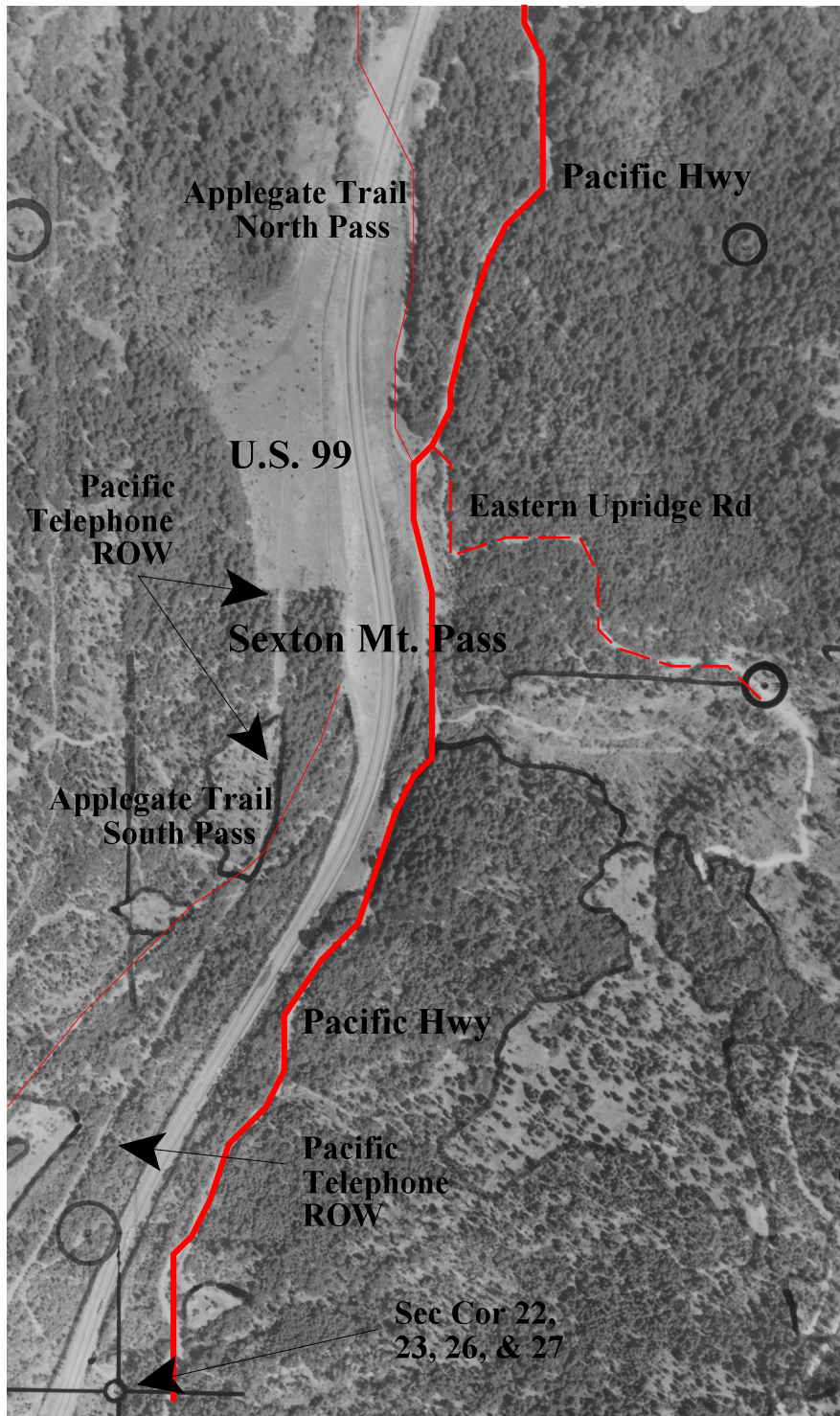
Aerial 1. Smith Hill Pass: 1939
Base Aerial Courtesy of OR Dept. Of Water Resources

Aerial 1B. Smith Hill Pass With Geographic Features: 1939



Aerial 1B. Smith Hill Pass With Geographic Features: 1939
Base Aerial Courtesy of Oregon Department of Water Resources

Aerial 2A. Sexton Mountain Pass Region: 1959



Aerial 2A. Sexton Mt. Pass (Overview): 1959
Base Aerial Courtesy of BLM

Aerial 2B. Sexton Mountain Pass (Focus): 1959

