

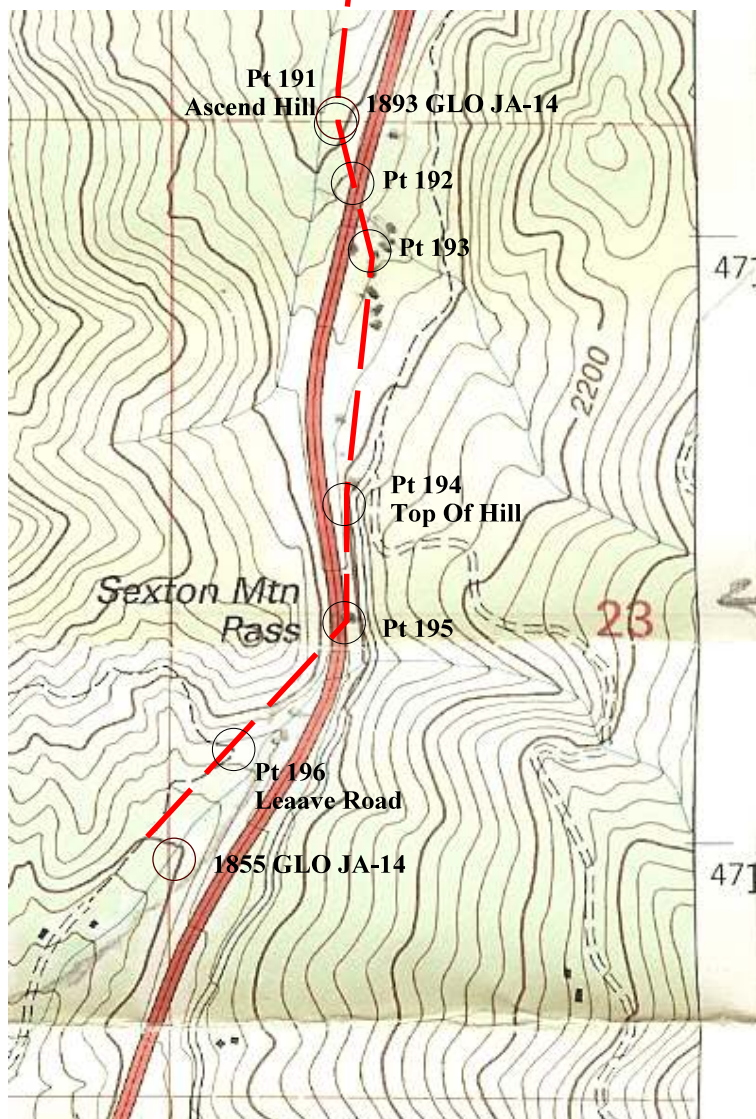
**General Land Office (GLO) Surveyed Points of Interest (POIs):
1855 JA-14 Maple Creek to 1893 JA-15 South Rat Creek: 1874**

**Map 9. 1874 Josephine County Road & 1998 Maple Creek
Base Map: Section 23, 1998 USGS Merlin, Oregon Quadrangle¹**

January 9, 2012 This is a comparison analysis with an art program to plot the surveyed 1874 County Road (Map 8) in Section 23 on the 1998 USGS Merlin Quadrangle. The following are the actual survey points for the 1874 road and the AutoCAD Points, including course and distance, established by Josephine County Public Works for Section 23 (see Map 8).

| AutoCAD | Links | Feet | Course |
|--|-------|--------|-----------|
| Ascend Hill [Close to JA-15; <i>Location Of Applegate Trail in Upper Rat Creek: A Work In Progress</i> ^{17A}] | | | |
| Point 191 | 12.5 | 825' | S. 6½" W |
| Point 192 | 6.5 | 429' | S. 15½" E |
| Point 193 | 7.0 | 462' | S. 10" E |
| Top of Hill | | | |
| Point 194 | 19.0 | 1,254' | S. 6" W |
| Point 195 | 10.0 | 660' | S. 3½" E |
| Leave Road | | | |
| Point 196 | 15.0 | 990' | S. 42" W |
| [Close to JA-14] | | | |
| Point 197 | 15.0 | 990' | S. 38½" W |

The analysis was to compare how closely the 1874 road matched JA-14 and JA-15 without changing the 1874 survey for the distance and course of the AutoCAD points, and compare the location of the 1874 *Trail* in comparison to existing roads and Maple Creek, including the surveyed road location on the 1940 Oregon Highway Map¹¹. Operationally this meant to overlay the plotting of the surveyed road in Section 23 for the 1874 map on to Section 23 of the 1998 Quad. The results were not perfect, but within the limitations of the art program the 1874 *Trail* (county road) was very close to JA-14. JA-15 was not as close, but Point 196 indicated the survey was leaving the road. It was much closer than anticipated. It was a very good fit for the 1940 survey of the 310' Segment of Applegate Trail at South Mt. Sexton Pass, the 1,060' Applegate Trail I North Sexton Pass I-5 East, and JA-16.



Footnote 1. USGS. 1998. *Merlin Quadrangle*. 7.5 minute topographic series, scale 1:24,000, and contour interval 40 feet.

C:\Documents and Settings\mike\My Documents\Genealogy\History_Brochures\Insulators\Telegraph and Applegate Trail Paper\Maps\Map 9 1874 JO CO Rd Sec 23 Overlay 1998 USGS Topo 010912.wpd