

## Map 2. Telegraph Lines At Old Smith Homestead Smith Hill Pass: 1940

January 6, 2012

### Hugo Emigrant Trails Committee

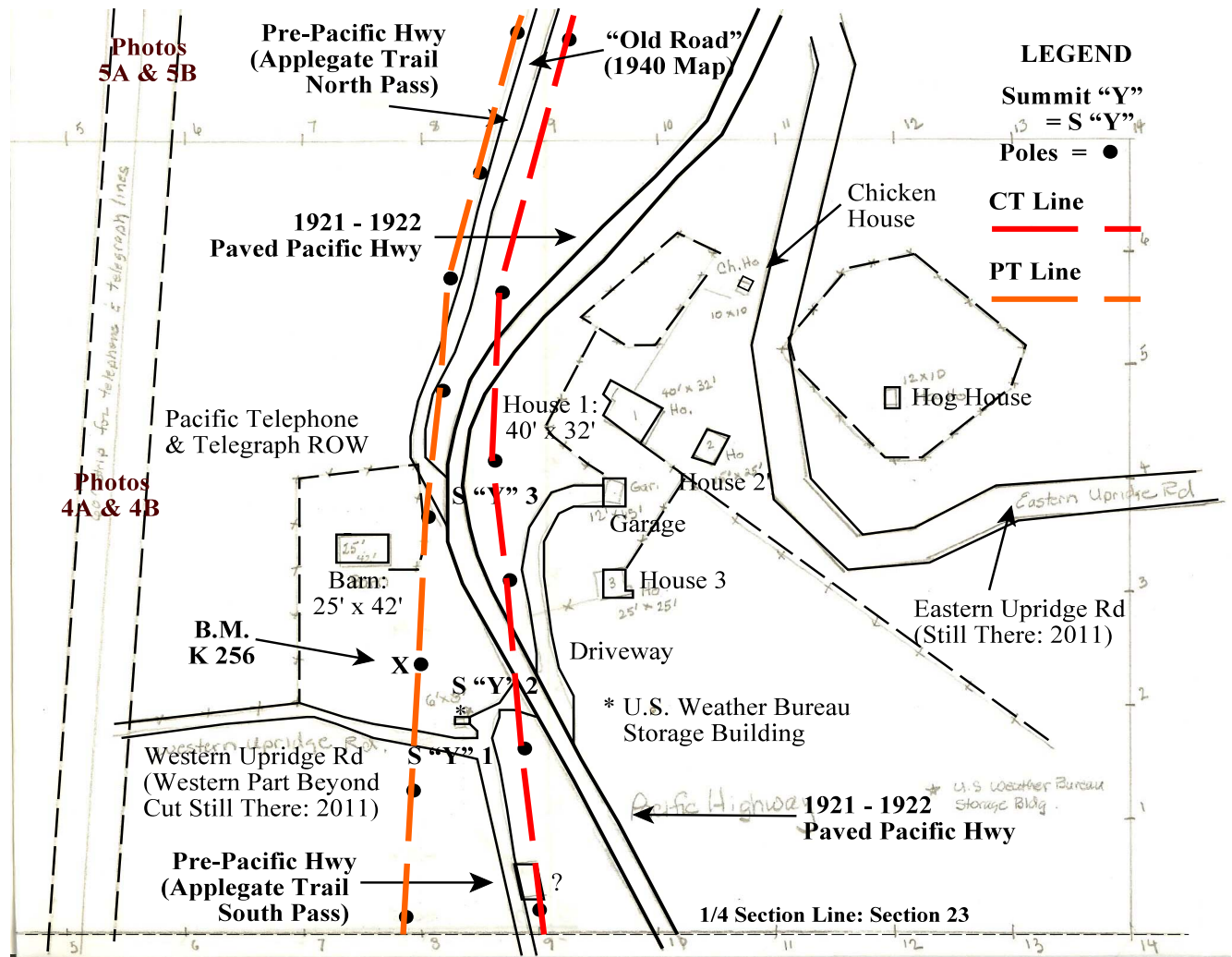
**1933** According to Harrington, the original summit was 2,046' "According to a sign that was there when Harrington visited in November, 1933, the elevation of the pass was 2,046'."

**1934 Bench Mark (B.M.) K 256** In 1934 B.M. K 256, with an elevation of 2,053.724', used to be near the summit of Sexton Mountain Pass along the old Pacific Highway, south of milepost 264, 84 feet west of highway, 87 feet south of pole barn, near pole in barnyard, and in rock outcrop.

**1940 Map:** Oregon State Highway Department. August 1940. *Right of Way Map, Sexton Mt. Section. Pacific Highway, Josephine County.* Scale 1" = 100'. Part 1 of 2, Drg. No. 5B-28-11

**1886 - 1887 Postal Telegraph (PT) Line** This line sometimes followed the original *Trail*, but the majority of its location was off *Trail*.

**1864 Collins Telegraph (CT) Line** This line followed the original *Trail* as of 1864.



Map 2. Old Smith Homestead At Smith Hill Pass: 1940

Base Map Oregon Pacific Highway Map: 1940

C:\Documents and Settings\mike\My Documents\Genealogy\History\_Brochures\Insulators\Telegraph and Applegate Trail Paper\Maps\Map 2\_Old Smith Homestead At Smith Hill Pass 1940.wpd