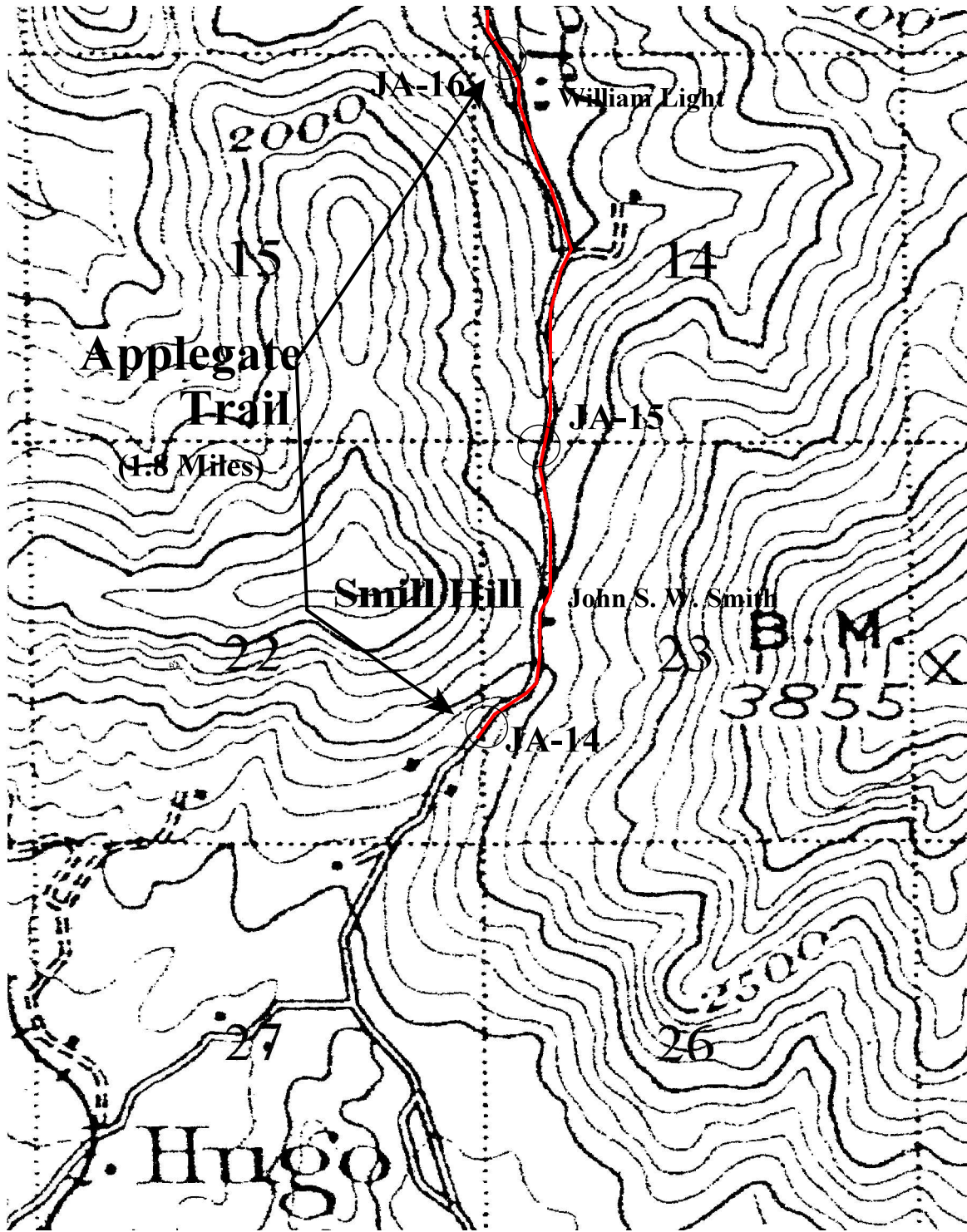


Map 1. 1.8 Mile Applegate Trail At Smith Hill Pass
From JA-14 To JA-16: 1901 - 1902



Old Smith Hill Pass Of Applegate Trail: 1901 - 1902

The Smith Hill Pass/Summit is located between the 2,000' and 2,100' contours in Section 23 of the Riddle Quadrangle.²

In the western-middle of Section 23 the John S. W. Smith homestead house is located adjacent to the Applegate Trail (*Trail*). John S. W. Smith homesteaded what would become Smith Hill in 1877. He was issued a homestead patent for 160 acres in Hugo, Oregon September 16, 1896 (Patent No. 3749). The Smith house was razed in 1941 for the Pacific Highway cut at the pass.

The William Light house and barn are located in the northwest corner of Section 14, also along the *Trail*. It had been granted to Frank A. Davis as a homestead in April 1895. The William Light House was constructed in approximately 1899 by William Light who purchased the property from Samuel Pettingill February 1899. The two-story Light house still exists today, January 15, 2012.

The evolved *Trail* of 1901 - 1902 is identified on the topographic map, but the scale does not significantly assist in locating the *Trail* except that it was located in the Maple Creek drainage, a tributary of Bummer Creek, north up and over Smith Hill Pass, and north down the south fork of Rat Creek.

In the southwest part of Section 14 (Riddle Quadrangle²) the *Trail* can be viewed as slightly to the east of the unnamed Rat Creek. It is the same in the top of Section 23 - the *Trail* can be viewed as slightly to the east of Rat Creek just before it reaches the Smith Hill Summit.

The 1940 Oregon Highway¹ map clearly depicts the north-south location of the *Trail* in the top of Section 23 as slightly to the east of Rat Creek just north of Smith Hill Summit. The location of the *Trail* shifts to the west on the south side of Mt. Sexton Pass or Smith Hill Summit.

On the Riddle Quadrangle² there is a discernable *Trail* location change west to east of an area south of Smith Hill Pass to the *Trail* located on the east side of Smith Hill Pass north of the summit. This matches the 1940 Oregon Highway¹ map.

1. Oregon State Highway Department. August 1940. *Right of Way Map, Sexton Mt. Section. Pacific Highway, Josephine County*. Scale 1" = 100'. Part 1 of 2, Drg. No. 5B-28-11.

2. USGS. Edition of 1904, reprinted 1923. *Riddle Quadrangle*. Surveyed in 1901 - 1902. Scale 1: 250,000. Contour interval 100 feet).