

Map 2. Old Smith Homestead At Smith Hill Pass: 1940

January 11, 2012

Hugo Emigrant Trails Committee

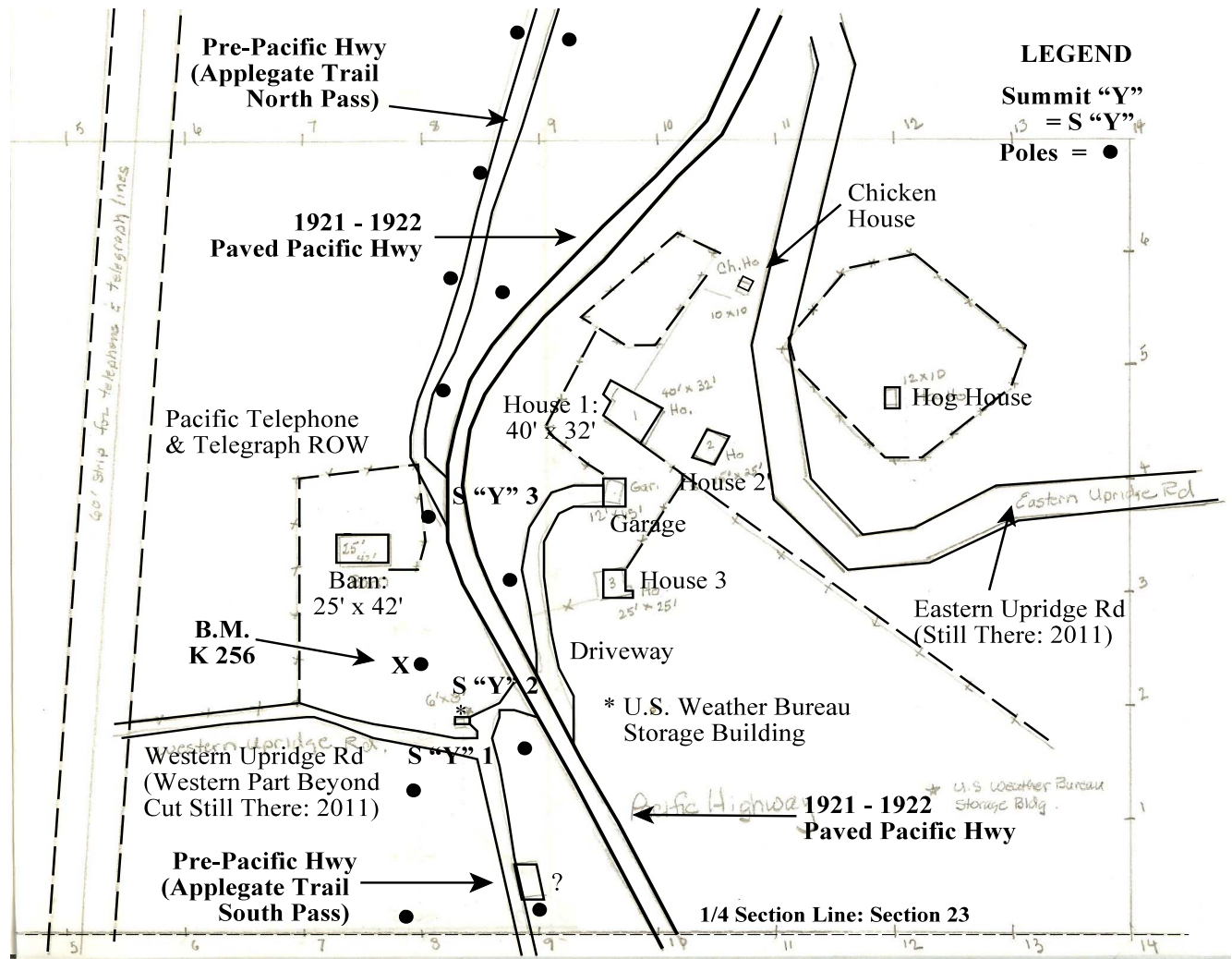
1933 According to Harrington, the original summit was 2,046' "According to a sign that was there when Harrington visited in November, 1933, the elevation of the pass was 2,046'."

1934 Bench Mark (B.M.) K 256 In 1934 B.M. K 256, with an elevation of 2,053.724', used to be near the summit of Sexton Mountain Pass along the old Pacific Highway, south of milepost 264, 84 feet west of highway, 87 feet south of pole barn, near pole in barnyard, and in rock outcrop (Section II.F.1.).

1940 Map: Oregon State Highway Department. August 1940. *Right of Way Map, Sexton Mt. Section. Pacific Highway, Josephine County.* Scale 1" = 100'. Part 1 of 2, Drg. No. 5B-28-11

"Y" Junction of Pre-Pacific Highway (Applegate Trail North Pass) and the paved 1921 - 1922 Pacific Highway was assumed to be the Smith Hill Summit.

According to Harrington, the original summit was 2,046' "According to a sign that was there when Harrington visited in November, 1933, the elevation of the pass was 2,046'."



Map 2. Old Smith Homestead At Smith Hill Pass: 1940

Base Map Oregon Pacific Highway Map: 1940