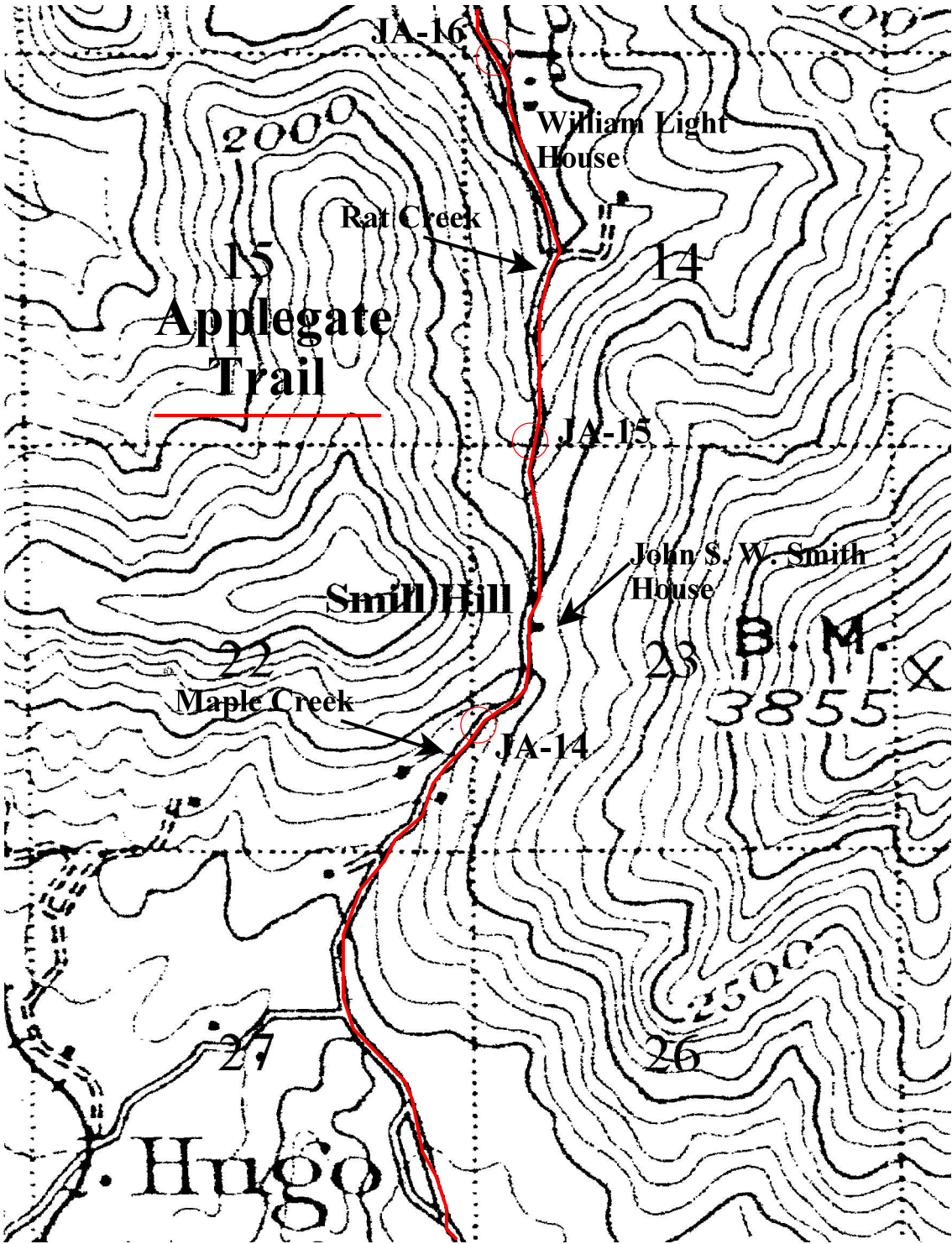


Map 1C. Old Smith Hill Pass Of Applegate Trail With Features: 1901 - 1902

January 11, 2012



Map 1C. Smith Hill Pass of Applegate Trail - 1

Old Smith Hill Pass Of Applegate Trail: 1901 - 1902

January 11, 2012

Surveyed Applegate Trail Sites

1855 General Land Office (GLO) Surveyed Applegate Trail Site: JA-14 Maple Creek
1893 GLO Surveyed Applegate Trail Site: JA-15 South Rat Creek
1855 GLO Surveyed Applegate Trail Site: JA-16 Old Stage Road

The evolved Applegate Trail (*Trail*) of 1901 - 1902 is identified on the topographic map. The small scale is not perfect in locating the *Trail* except that south of the Smith Hill Pass it was located in the Maple Creek drainage, a tributary of Bummer Creek, north up and over Smith Hill Pass, and continued north down the south fork of the Rat Creek drainage.

In the bottom of Section 14 (Riddle Quadrangle²) the *Trail* can be viewed as slightly to the east of Rat Creek. It is the same in the top of Section 23; the *Trail* can be viewed as slightly to the east of Rat Creek just north of Smith Hill Pass.

The 1940 Oregon Highway¹ map clearly depicts the north-south location of the *Trail* in the top of Section 23 as slightly to the east of Rat Creek just north of Smith Hill Pass. The location of the *Trail* shifts to the west on the south side of Mt. Sexton Pass or Smith Hill Pass. Like the 1940 Highway map, on the Riddle Quadrangle² there is a discernable *Trail* location change west to east of an area south of Smith Hill Pass to the *Trail* located on the east side of Smith Hill Pass north of the summit.

Riddle Quadrangle

The Smith Hill Pass/Summit is contained between the 2,000' and 2,100' contours in Section 23 of the Riddle Quadrangle.²

In the western-middle of Section 23 the John S. W. Smith homestead house is located adjacent to the Applegate Trail. John S. W. Smith homesteaded what would become Smith Hill in 1877. He was issued a homestead patent for 160 acres in Hugo, Oregon September 16, 1896 (Patent No. 3749). The Smith house was razed in 1941 for the Pacific Highway cut at the pass.

The William Light house and barn are located in the northwest corner of Section 14, also along the Applegate Trail. It had been granted to Frank A. Davis as a homestead in April 1895. The William Light House was constructed in approximately 1899 by William Light who purchased the property from Samuel Pettingill February 1899. The two-story Light house still exists today, January 11, 2012.

1. Oregon State Highway Department. August 1940. *Right of Way Map, Sexton Mt. Section. Pacific Highway, Josephine County*. Scale 1" = 100'. Part 1 of 2, Drg. No. 5B-28-11.

2. USGS. Edition of 1904, reprinted 1923. *Riddle Quadrangle*. Surveyed in 1901 - 1902. Scale 1: 250,000. Contour interval 100 feet).

C:\Documents and Settings\mike\My Documents\Genealogy\Applegate Trail GLO Surveyed Points\JA15 South Rat Creek\North Sexton Pass\Map 1C_Smith Hill Pass Of Applegate Trail_ 1901_1902.wpd