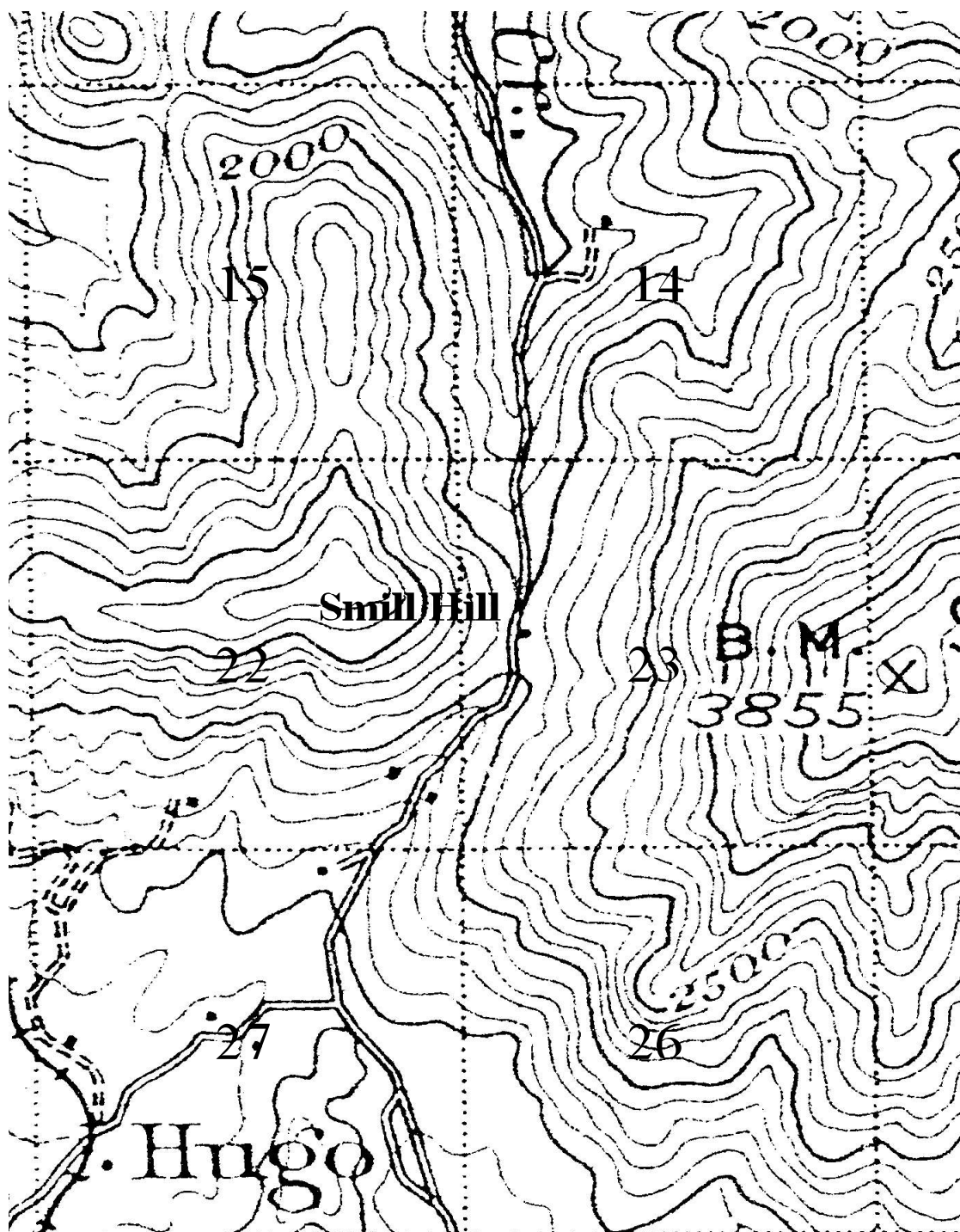


Map 1B. Old Smith Hill Pass Of Applegate Trail: 1901 - 1902
January 11, 2012



USGS. Edition of 1904, reprinted 1923. *Riddle Quadrangle*. Surveyed in 1901 - 1902. Scale 1: 250,000. Contour interval 100 feet).

C:\Documents and Settings\mike\My Documents\Genealogy\Applegate Trail GLO Surveyed Points\JA15 South Rat Creek\North Sexton Pass\Map 1B_Smith Hill Pass Of Applegate Trail_ 1901_1902.wpd