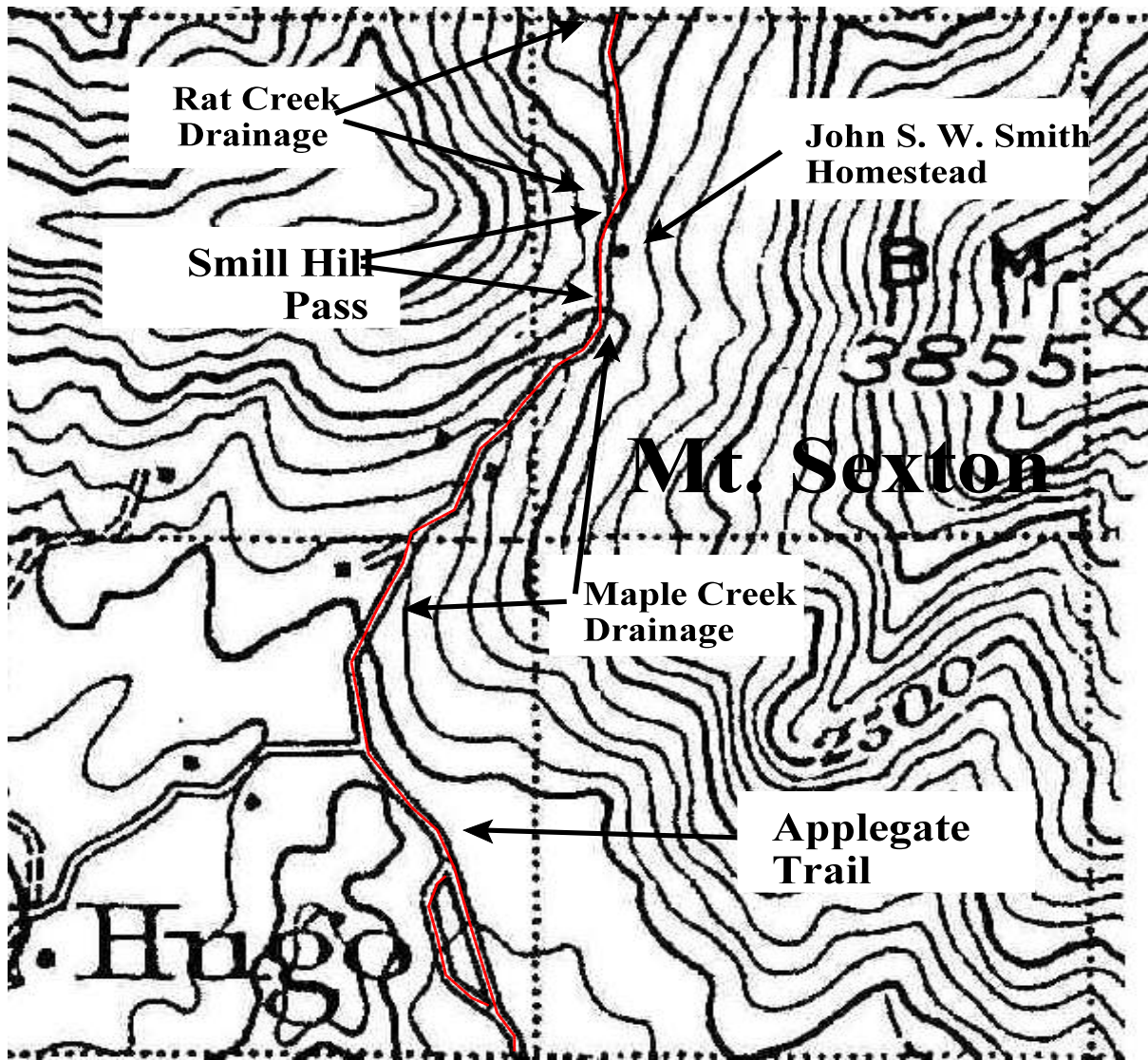


Map 1A. Smith Hill Pass Of Applegate Trail: 1901 - 1902
 January 11, 2012



Map 1A. Smith Hill Pass: 1901 - 1902
 Base Map: 1923 Riddle Quadrangle

The Smith Hill Pass is contained between the 2,000' and 2,100' contours. The John S. W. Homestead House is adjacent to the Applegate Trail. The evolved Applegate Trail of 1901 - 1902 is identified on the topographic map, but the scale does not significantly assist in locating the *Trail* except that it was located in the Maple Creek drainage, a tributary of Bummer Creek, north up and over Smith Hill Pass, and further north down the south fork of the Rat Creek drainage. Significantly, there is a minor Trail location change west to east of an area south of Smith Hill Pass to the Trail located on the east side of Smith Hill Pass north of the summit.

USGS. Edition of 1904, reprinted 1923. *Riddle Quadrangle*. Surveyed in 1901 - 1902. Scale 1: 250,000. Contour interval 100 feet)

C:\Documents and Settings\mike\My Documents\Genealogy\Applegate Trail GLO Surveyed Points\JA15 South Rat Creek\North Sexton Pass\Map 1A_Smith Hill Pass Of Applegate Trail_1901_1902.wpd