

**General Land Office (GLO) Surveyed Points of Interest (POIs):  
1893 JA-15 South Rat Creek to 1855 JA-16 Old Stage Road: 1998**

**Map 14A. Roads & Rat Creek: 1998  
Base Map: 1998 USGS Merlin, Oregon Quadrangle**

**September 3, 2010** This USGS map is a surveyed map with features accurately located.

The map clearly locates the main stem of Rat Creek between JA-15 and JA-16 and a road parallel and east of it in the north have of Section 14.

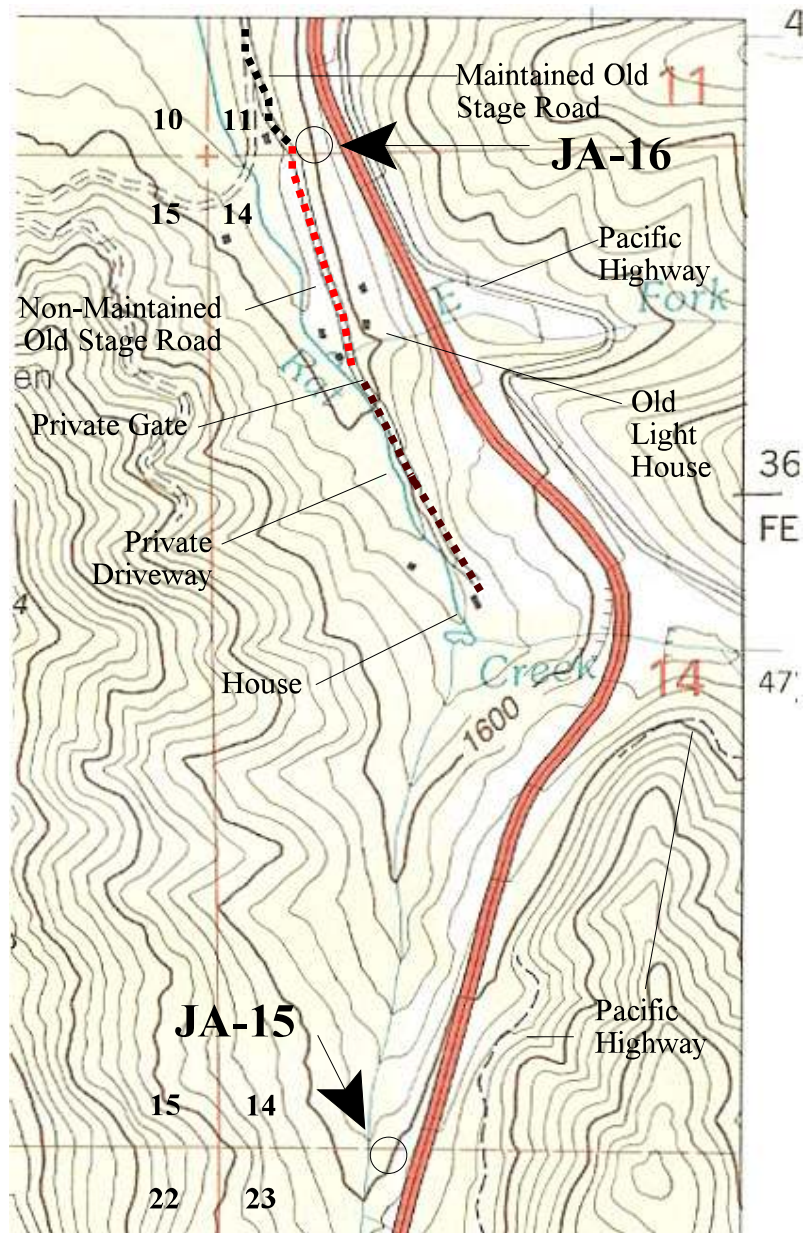
**Old Stage Road** The road parallel and east of Rat Creek has three segments:

1. Public “paved” Old Stage Road maintained by Josephine County.
2. Public “gravel” Old Stage Road not maintained by Josephine County.
3. Private driveway to house.

The map also shows the Interstate 5 (I-5) Highway and segments of the old Pacific Highway.

It also shows the old Light house at the old fish pond and the house at the end of the private driveway paralleling Rat Creek.

**1855 JA-16 & 1893 GLO JA-15**  
(see Map 9 for JA-16 and JA-15 survey data).



Footnote 1. USGS. 1998. *Merlin Quadrangle*. 7.5 minute topographic series, scale 1:24,000, and contour interval 40 feet.