

General Land Office (GLO) Surveyed Points of Interest (POIs): 1893 JA-15 South Rat Creek to 1855 JA-16 Old Stage Road

Map 1. Jacksonville Road (JR) Of Applegate Trail (Trail): 1855 GLO Survey/1856 GLO Map Base Map: 1856 GLO Map

The GLO surveyed points for the *Trail* are east of Rat Creek. The 1856 GLO map places the Applegate Trail east of, and parallel to, unnamed creek (Rat Creek). The average distance of the *Trail* from Rat Creek per the GLO map was 370', a 5' difference from the only surveyed point, JA-16, which was 365 feet west of the *Trail*.

GLO Survey JA-15 South Rat Creek

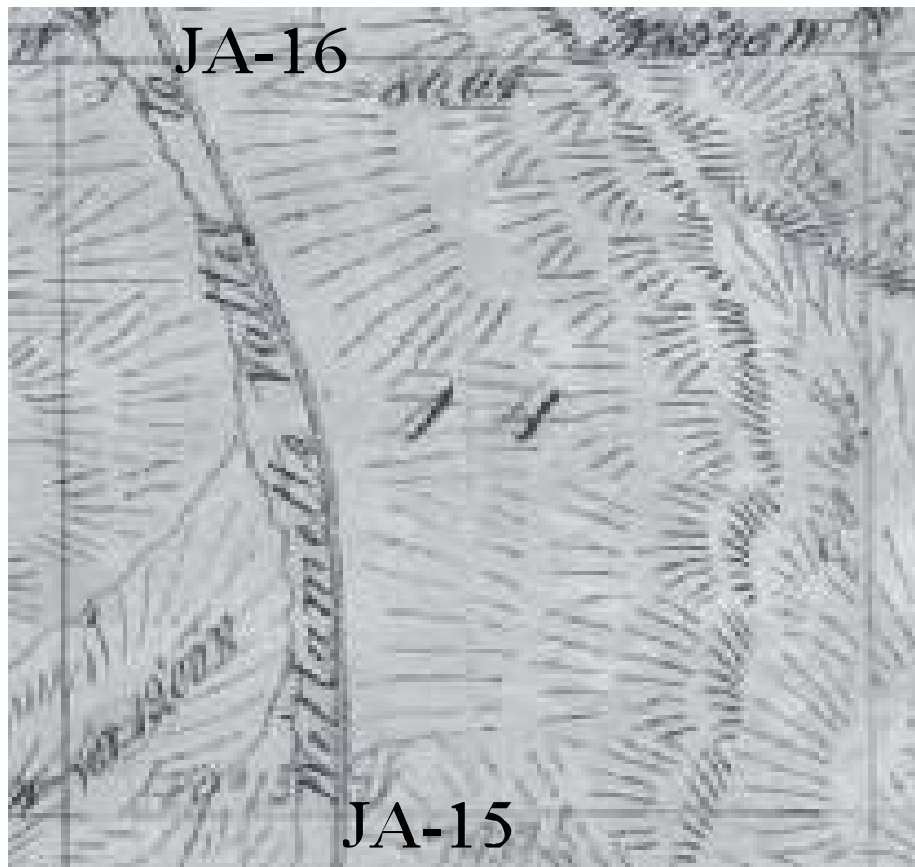
1893 GLO Survey Notes/GLO 1894 Map for Pages 462 - 463. Subdivisions of T. 34 S., R. 6 W. - Thence I run N89°13'E. [East] on a true line bet [between] Secs [sections] 14 & 23 Var 19°E - 13.10 chains. "Grants Pass and Canyonville Roads course N. and S." Rat Creek is 92.4 feet west of the *Trail*.

Rat Creek per the 1856 GLO Map was 328.5' west of Trail. It was not surveyed in 1855; it was surveyed in 1893.

¼ Section North of JA-15 From 1855 GLO Map Rat Creek is 328.5' west of Trail.

½ Section North of JA-15 From 1855 GLO Map Rat Creek is 511' west of Trail.

¾ Section North of JA-15 From 1855 GLO Map Rat Creek is 316' west of Trail.



JA-16 Old Stage Road 1855 GLO Survey Notes/GLO 1856 Map for Page 605. Subdivisions of T. 34 S., R. 6 W. 89.46 W [West] on True Line between sections 11 & 14. - 72.00 chains. a Road c N30°W & S30°E. Rat Creek is 365 feet west of the *Trail*.

In summary, the average distance of the *Trail* from Rat Creek between JA-15 and JA-16 at five east-west direction lines was 370' ($328.5' + 328.5' + 511' + 316' + 365' = 1,849 / 5 = 369.8'$). JA-16 to creek was the only surveyed distance. There was no significant difference between the distance from JA-15 ½ mile north and JA-16 ½ mile south: The northern ½ mile width averaged 389' and the southern ½ mile width averaged 397'. Both of these averages are within 24' - 32" of the 365' at the surveyed JA-16. What we have is near parallel lines (ie., unnamed Rate Creek and the *Trail*).