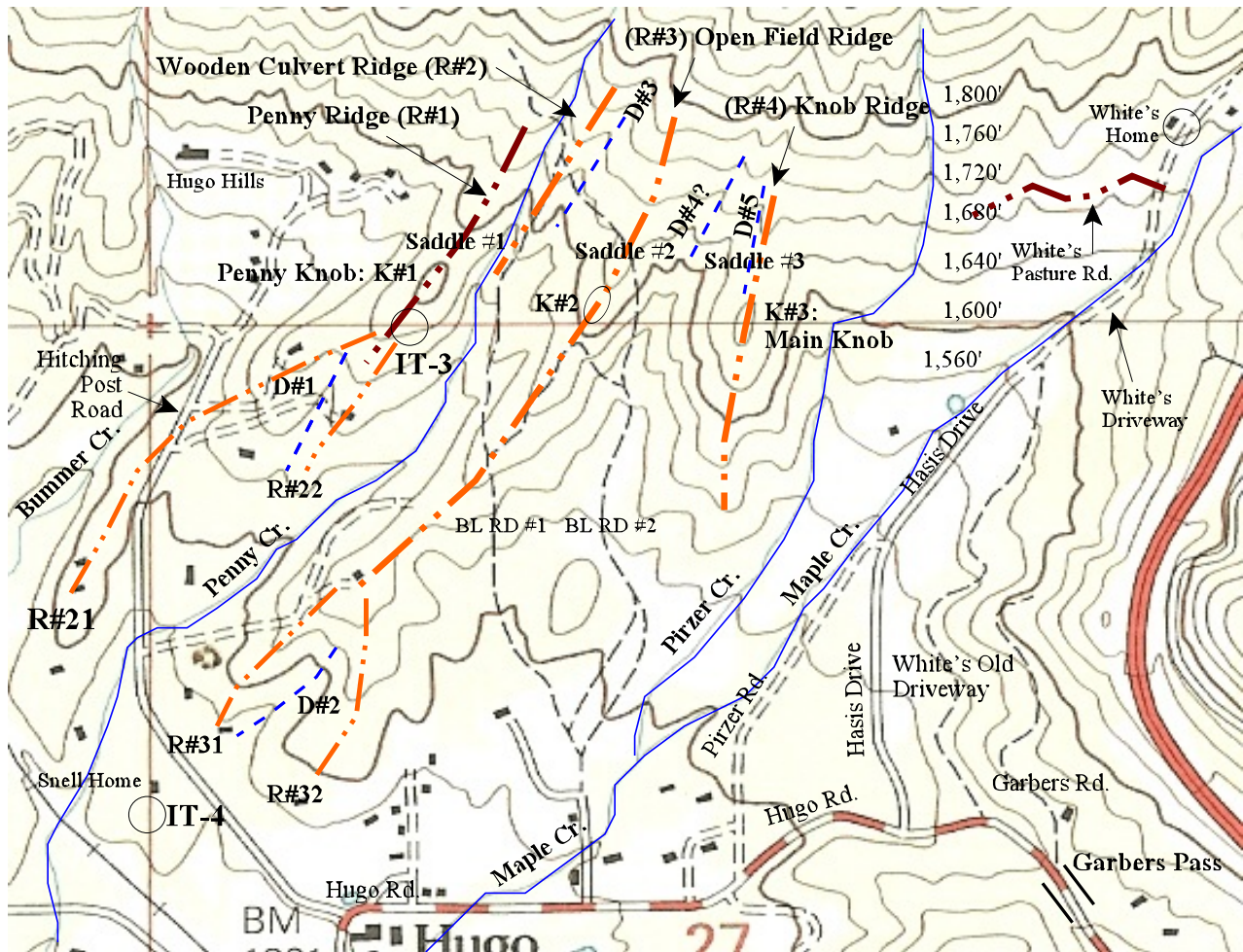


## Map A6. Topographic Features & Roads North Of Garbers Pass: 1998



Base Map. U.S. Geological Survey, U.S. Department of the Interior. 1998. *Merlin Quadrangle, Oregon-Josephine Co., 7.5-Minute Series (Topographic)*. Scale 1:24,000, and contour interval 40 feet. Denver, CO.

## Map A6. Topographic Features & Roads North Of Garbers Pass: 1998

### Passes

Mt. Sexton Pass (not on map)  
Garbers Pass

### Ridges

R#1 Penny Ridge  
R#21 Penny Ridge Toe SouthWest  
R#22 Penny Ridge Toe South  
R#2 Wooden Culvert Ridge  
R#3 Open Field Ridge  
R#31 Open Field Ridge Toe West  
R#32 Open Field Ridge Toe South  
R#4 Knob Ridge

### Knobs

K#1 Penny's Knob  
K#2 Open Field Knob  
K#3 Main Knob

### Saddles

Saddle (S) #1 Penny's Saddle  
Saddle (S) #2 Open Field Saddle  
Saddle (S) #3 Knob Ridge Saddle

### Draws

Draw (D) #1 Penny Draw/Seasonal Creek  
Draw (D) #2 Burkey Draw/Seasonal Creek  
Draw (D) #3 Wooden Culvert Draw  
Draw (D) #4 Open Field Draw  
Draw (D) #5 Knob Draw

### Creeks

Grave Creek  
Rat Creek  
Penny Creek  
Pirzer Creek  
Maple Creek  
Bummer Creek  
Quartz Creek  
Jumpoff Joe Creek

### Roads

Hitching Post Road  
Penny Ridge Logging Road  
Boldway Logging (BL) Roads To Open Field  
(BL Rd #1: BL #2)  
Hugo Road  
Smith Road  
Hasis Drive  
White's Driveway to Hasis Drive  
White's Old Driveway  
Pirzer Road  
Garbers Road