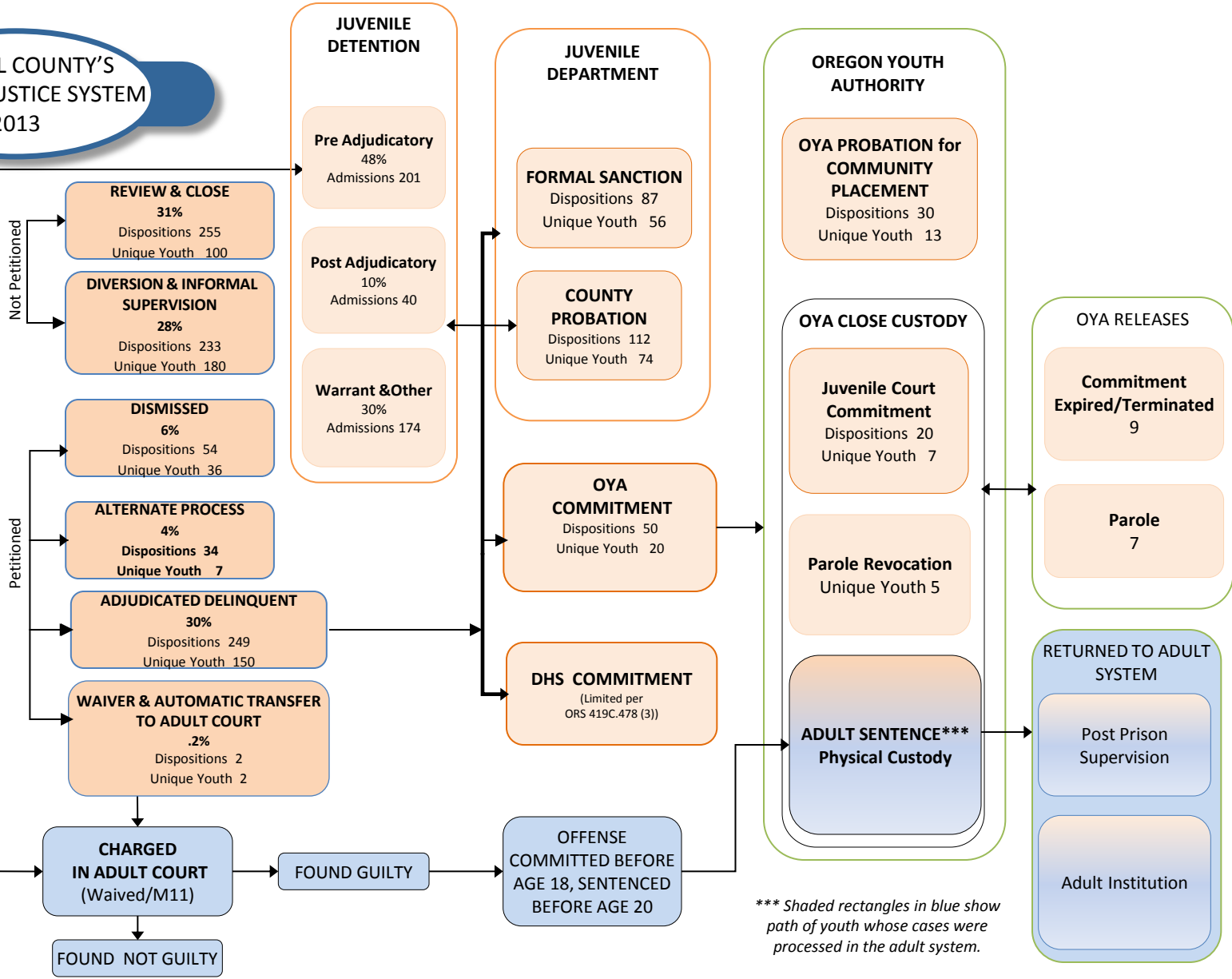


YAMHILL COUNTY'S JUVENILE JUSTICE SYSTEM 2013

Yamhill County Youth Population Ages 10-17 11,429

JUVENILE DEPARTMENT	
Received Referrals*	Disposed Referrals*
Total Referrals 665	Total Referrals 827
Unique Youth 409	Unique Youth 474
Criminal Only Referrals 409	Criminal Only Referrals 482



* Disposed referrals are tallied only once under the most intense disposition on the referral during the year.

** Criminal = Felony & Misdemeanor
Non-Criminal = Violations
Status Offenses = Runaway, Curfew, etc.

* Disposed Referrals may have been received prior to the beginning of the year.
* Referrals received may be disposed after the end of the year;

*** Shaded rectangles in blue show path of youth whose cases were processed in the adult system.
ORS 137.124(7) also allows transfer to OYA of certain adult inmates who commit their offense between 18-20.