

**Minutes of Field Trip to 1857 Niday DLC No. 40 Survey JA-10B &
*It's Linear Vegetation/Soil Line (JA-10BA)***

**GLO Field SubCommittee, Hugo Emigrant Trails Committee
Inventory Trip
Wednesday, November 16, 2011
3:00 p.m. - 4:00 p.m.**

SPONSORS



**Josephine County Historical Society
Hugo Neighborhood Association & Historical Society
NW Chapter Oregon-California Trails Association**

Web Reference (<http://www.hugoneighborhood.org/inventorybrochures.htm>)
Inventory Brochure. *Niday DLC Survey JA-10B & It's Vegetation/Soil Line JA-10BA*.

Minutes 1. GLO Field Review SubCommittee, Hugo Emigrant Trails Committee. September 7, 2010. Minutes of Field Trip to *Niday DLC Survey JA-10B & It's Linear Vegetation Line* (i.e., Applegate Trail). Hugo, OR.
2. GLO Field Review SubCommittee, Hugo Emigrant Trails Committee. October 24, 2010 Minutes of Field Trip to 1857 Niday DLC No. 40 Survey JA-10B & *It's Linear Vegetation/Soil Line (JA-10BA)*. Hugo, OR.

Accomplishments With a government representative's permission four members of the GLO Field Sub-Committee, Hugo Emigrant Trails Committee, placed a Northwest Chapter of the Oregon-California (NWOCTA) Trail Association carsonite marker for the Applegate Trail *Niday DLC Survey JA-10B & It's Vegetation/Soil Line JA-10BA* (Appendix A and Appendix B).

Evolved Applegate Trail The last Rogue River Indian War started October 9, 1855. By 1856 the war was over and the Native Americans had been removed from the Rogue Valley.

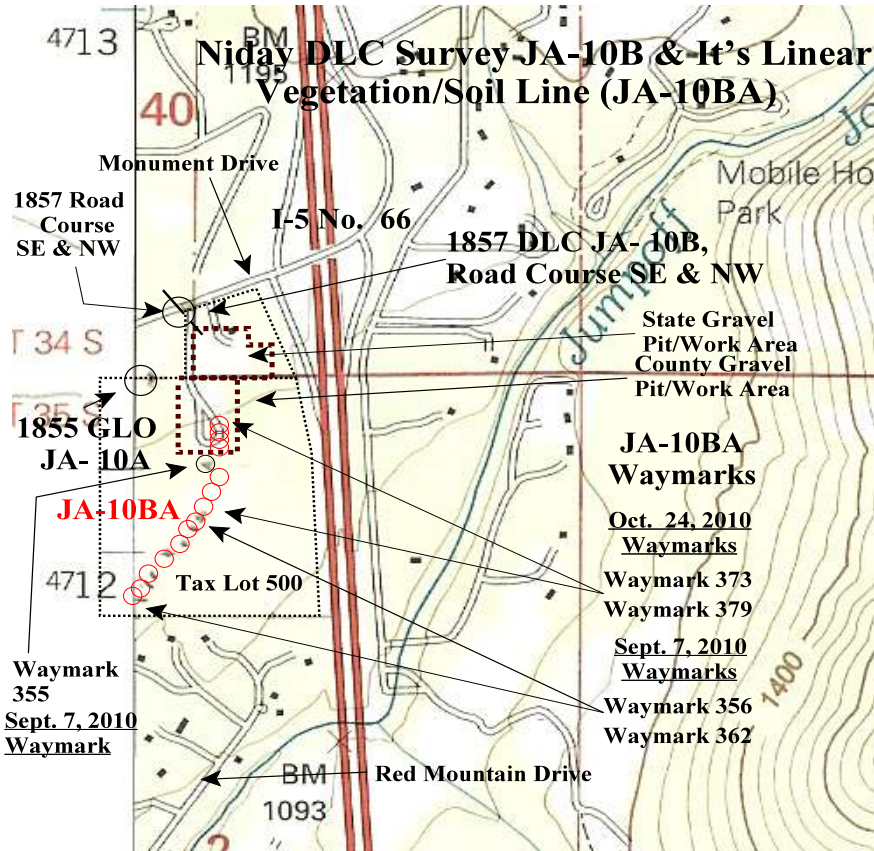
All weather Wagon roads after 1856 remained simple with a little digging on the sides of hills as the road locations moved away from the winter bottom lands that had been dry during the fall-early winters and relatively open areas during the generally one-way 1846 - 1856 migrations north. Where side hills in the area permitted it these roads were a little higher than the surrounding wet, muddy, bottom lands with draining occurring when it rained. The *Trail* evolved from the August 1855 Applegate Trail Site JA-10A to the February 1857 Applegate Trail Site JA-10B to the east out of the flat wet lands associated with 12B soil mapping unit to the slightly higher ground associated with the 12D soil mapping unit (Map 1).

Niday DLC Survey JA-10B & It's Vegetation/Soil Line JA-10BA The following GPS Mark for latitude and longitude of the NWOCTA carsonite marker is just one of several describing the evolved Applegate Trail Site JA-10BA (Map 1).

42° 33' 42.0" North Latitude
 123° 22' 27.9" West Longitude

Harvest Operations

There had been harvest operations in Tax Lot 500 that may have slightly changed the landscape. However, the Josephine County Forestry Program harvest contracts did not permit any equipment to leave existing roads, including the logging road associated with the vegetation/soil line (i.e., Applegate Trail Site JA-10BA), and skid trails since the early 1980s. An assumption is that the time and expense to make a new logging road would not occur if there was an existing road that already served the same purpose (Harris, Vic. September 17, 2010. *Email From Vic Harris, Forestry Program Supervisor, Josephine*



Map 1. Niday DLC Survey JA-10B & It's Linear Vegetation/Soil Line (JA-10BA)

County Forestry Program, to Mike Walker, Education Chair, Hugo Neighborhood Association & Historical Society. Grants Pass, OR.; GLO Field Review SubCommittee, Hugo Emigrant Trails Committee. October 24, 2010 Minutes of Field Trip to 1857 Niday DLC No. 40 Survey JA-10B & It's Linear Vegetation/Soil Line (JA-10BA). Hugo, OR.).

The GPS Mark for latitude and longitude was offset from the middle of the road bed to its northern edge near a large Pacific madrone tree (Map 1).

Niday DLC Survey JA-10B & It's Vegetation/Soil Line JA-10BA



**L/R: Jim Ford, Joe Neiderheiser, & Rene Ford At
*Niday DLC Survey JA-10B & JA-10BA Line***



Rene Ford At Applegate Trail Line JA-10BA

Appendix A. Hugo GLO Field SubCommittee Participants

Jim & Rene Ford, Members
GLO Field Review SubCommittee
Hugo Emigrants Trails Committee
P.O. Box 81
Merlin, OR 97532

Joe Neiderheiser Member
GLO Field Sub-Committee
Hugo Emigrant Trails Committee
279 Ridgefield Road
Grants Pass, OR 97527

Mike Walker, Member
GLO Field Sub-Committee
Hugo Emigrant Trails Committee
3388B Merlin Rd #195
Grants Pass, Oregon 97526

Appendix B. Government Representative

Niday DLC Survey JA-10B & It's Vegetation/Soil Line JA-10BA

Vic Harris, Forestry Program Supervisor
Josephine County Forestry Program
Courthouse
Grants Pass, OR 97526