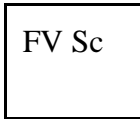


**Minutes of Field Trip To Illinois Valley Road Of Applegate Trail:
Fort Vannoy School (IV-N4A/IV-N4B)**

**GLO Field Survey Sub-Committee, Hugo Emigrant Trails Committee, Inventory Trip
POI OR-AG-24-36-06-09/16-W-IV-N4A. Fort Vannoy School IV-N4A/IV-N4B**

**Thursday, August 25, 2011
8:00 a.m. - 10:00 a.m.**

SPONSORS



**Fort Vannoy Elementary School
Fort Vannoy Farms, Inc.
Josephine County Historical Society
Hugo Neighborhood Association & Historical Society
NW Chapter Oregon-California Trails Association**

References

Web Survey Notes: http://www.blm.gov/or/landrecords/survey/yNoteView1_2.php?R0045OR0082001560

Web Survey Notes: http://www.hugoneighborhood.org/Fort_Vannoy_School_IV-N4A.htm

Web Map: <http://www.hugoneighborhood.org/T.36S,R6W,W.M.htm>



Photo 1. Fort Vannoy School Applegate Trail Sign

County Survey: 76 - 59

Oregon GLO 1855 Map: T.36S_R.6W_W.M.

USGS 1996 Wilderville 7.5' Quad

Josephine County 2011 Assessor Map: Section 16,

T.36S_R.6W_W.M.

County Survey: 76 - 59

IV Of Applegate Trail: Fort Vannoy School (IV-N4A)
Brochure

Purpose Members of the General Land Office (GLO) Field Review Sub-Committee (*GLO Sub-Committee*), Hugo Emigrant Trails Committee, to inventory and mark GLO point of interest (POI) site "Fort Vannoy School IV-N4A" of the Applegate Trail (*Trail*). IV-N4A/IV-N4B is part of the Fort Vannoy Farms Applegate Trail Project which is to

research, locate, and mark trail sites IV-N1A through IV-N4A, 1855 Vannoy house and barn, and the 1846 ford on north and south sides of the Rogue River.

Background On August 4, 2011 members of the *GLO Sub-Committee*, Kelly Rarey, Mike Walker, and Chris Wytcherley, located the quarter section corner between sections 9 and 16 (Map 1). The 1/4 corner would be used to locate IV-N4A which is located in a physical garden of the private property owner adjacent and north of the section line between section 9 and 16.

It was decided to locate IV-N4B, an off set of IV-N4A, which was southwest of IV-N4A along the security fence line of the Fort Vannoy Elementary School. The elementary school children and other viewers would be able to view the IV-N4B carsonite marker from the school yard without the trip through the blackberries and underbrush to and across Vannoy Creek.



Photo 1. Kathie Hill, Principal of Fort Vannoy Elementary School Speaking to Group: (l to r) Jim Kriz, Rene Ford, Richard Marshall, Kelly Rarey, Joe Neiderheiser, Leta Neiderheiser, and Jim Ford.

Reference: July 28, 2011 Minutes of Field Trip To Illinois Valley Road Of Applegate Trail: Fort Vannoy School (IV-N4A), and August 4, 2011 Minutes of Field Trip To IV-N4A.

Participants On August 25, 2011 there were six participants from the *GLO SubCommittee*: Glen Campbell, Jim and Rene Ford, Joe Neiderheiser, Kelly Rarey, and Mike Walker. Other participants were Richard and Kathy Marshall, Directors, Josephine County Historical Society (JCHS); Leta Neiderheiser, Member, Northwest Chapter of the Oregon California Trails Association (NWOCTA) & Hugo Emigrant Trails Committee; Co-Sponsor

Bob Crouse, Fort Vannoy Farms, Inc; Co-Sponsor Kathie Hill, Principal, Fort Vannoy Elementary School, and Jim Kriz, 3rd Grade Teacher at Fort Vannoy Elementary School (Photos 1-5, Appendix A).

Accomplishments Field trip to Fort Vannoy School off set IV-N4B area where members of the *GLO Sub-Committee* located and marked IV-N4B from the 1/4 corner with a professional carsonite marker (Maps 1 & 2 and Aerial Photo 1).

I. FORT VANNOY SCHOOL SURVEY (IV-N4A/IV-N4B) FACTS

A. 1855 GLO Survey for IV-N4A

<u>Chains</u>	N89" 5'E West on True Line Between Secs 9 & 16
34.15	Stream 15 lks wide c SW [34.15 chains = 2,253.9']
37.50	Swale Ground c N & S [37.5 chains = 2,475']
38.60	Road from Ill Valley to Willamette c N & S [38.6 chains = 2,547.6']

40.27½ Set qr Sec Post (From Which)
a Y. Pine 48 in dia bears N70E 15 lks
a Do 54 in dia bears S60E 87 15 lks
40.27½ chains = 2,658.15']
80.55 To Sec Cor [80.55 chains = 5,316.3']

B. Stakeholders (Josephine County Assessor Map 1 and Map 2)

North Boundary Applegate Trail Site IV-N4A: 1.51 Acre (RR 2.5) Tax Lot 904, Section 9, T.36S., R.6W., W.M.

Burns Living Trust
Brian E & Cynthia M. Burns, Trustees
545 Bastian Road
Grants Pass, Oregon 97526

South Boundary Applegate Trail Site IV-N4A: 5.68 Acre (RR 2.5) Tax Lot 400, Section 16, T.36S., R.6W., W.M.

Fort Vannoy Elementary School
c/o Kathie Hill, Principal
5250 Upper River Road
Grants Pass, Oregon 97526-8208



Photo 2. Measuring to Off Set IV-N4B

C. Josephine County Survey 76 - 59

1855 IV Road at Applegate Trail site Fort Vannoy School IV-N4A is 110.55' (2,658.15' - 2,547.6' = 110.55') East of "Found 1 ½" Iron Bar" at 1/4 Section Corner between Sections 9 & 16.

D. 2002 Aerial Photographs (Aerial Photo 1)

The aerial photo identified Vannoy Creek on an east-west alignment in trees and vegetation south of the section line for IV-N4A and an open area north of the section line at Tax Lot 904.

E. Josephine County Surveyor's Office

The Josephine County Surveyor's Office first visited the 1/4 Corner in 1909 and the last time the Office visited this ¼ corner was January 9, 1997 (CS Book 9, Page 309; Wytcherley July 29, 2011 email). The Josephine County Surveyor's Office re-visited the 1/4 corner August 4, 2011 (Map 1).

II. BEARING & DISTANCE WORK (Map 1)

Bearing and distance measurements to IV-N4A that were scheduled for August 25, 2011 field trip did not occur as site is in fenced garden acting as private property.

III. GLOBAL POSITION SYSTEM (GPS) WORK

42" 26' 52.8" North Latitude (IV-N4A)
123" 24' 51.3" West Longitude (IV-N4A)

GPS work scheduled for August 25, 2011 field trip did not occur as site is in fenced garden acting as private property.

IV.A. AUGUST 4, 2011 FIELD TRIP ACCOMPLISHMENTS

Field trip to Fort Vannoy School IV-N4A area where members of the *GLO Sub-Committee* located the 1/4 corner between sections 9 and 16 on the property of the Fort Vannoy Elementary

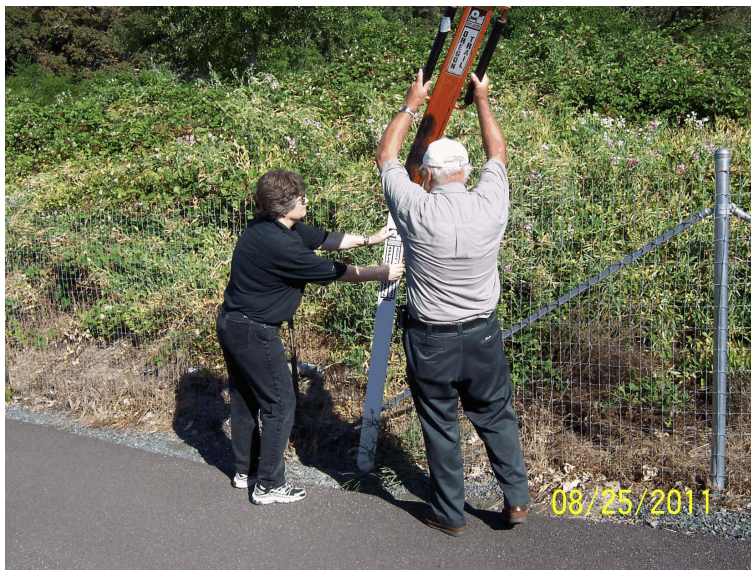


Photo 3. Kathie Hill and Jim Ford Preparing to Pound In Professional Applegate Trail Carsonite Marker At IV-N4B

School and the Burns Living Trust property. The field trip was actually two field trips. The first field trip was where Kelly and Mike found the general area of the 1/4 corner.

The area of interest (i.e., 1/4 corner and IV-N4A) was located on two different Josephine County Assessor map sections (i.e., Sections 16 and 9; Maps 1 & 2). The *GLO Sub-Committee* found and hacked two trails to the 1/4 corner both from the west and from the east in Vannoy Creek. Being in Vannoy Creek was like being in the bottom of a narrow deep canyon with high blackberry bushes and canopy trees for much of the travel. Kelly and Mike believed

the monument was at the SE corner of a garden, but it was not viewed above ground. They decided to travel to the Josephine County Surveyor's Office for more specific information on the 1/4 corner (minutes of August 4, 2011 field trip). This information made all the difference when three participants from the *GLO SubCommittee* (Kelly Rarey, Mike Walker, and Chris Wytcherley) returned to the SW corner of the garden.

The 1/4 corner was found and would be crucial from which to locate and mark IV-N4A and/or IV-N4B. The following 1997 survey facts from CS Book 9, Page 309 for the 1/4 corner were

confirmed on the ground by the *GLO Sub-Committee* when the monument was found about 8 inches below the surface of the ground.

Brass Cap *Monumented with a 2" diameter Iron Pipe, 6" below surface, with Brass Cap.*

Iron Rod *An Iron Rod 5/8 diameter, bears North 4.5 Feet.*

8 Ft Fence Post *A 5" diameter treated fence post, 8 Ft tall above ground, the SW Corner of a garden with wire extending Northerly and Easterly, bears S80" E, 11.12 Feet to a nail at side center in the base with a 1" x 1 1/8" aluminum tag attached, stamped "CS BO".*

Metal Building *The SE Corner of a metal building, bears N86" W, 84.33 Feet to a nail in a wood beam at the base of the building, with a 1" x 1 1/8" aluminum tag attached, stamped "CS BO".*

Solitary Metal Fence Post *Corner lies at East base of a solitary metal fence post, +/- 15' North of high bank of FT. Vannoy Creek.*

In summary, the 1/4 corner common to Sections 9 and 16 was found by the *GLO Sub-Committee* from which measurements could be made to locate IV-N4A and/or IV-N4B.

IV.B. AUGUST 25, 2011 FIELD TRIP ACCOMPLISHMENTS

The accomplishments were a field trip to the Fort Vannoy Elementary School off set IV-N4B Applegate Trail site area where members of the *GLO Sub-Committee* located and marked IV-N4B from the 1/4 corner. The members used the previous work of the August 4, 2011 field trip in locating the 1/4 corner and shooting a bearing south across Vannoy Creek to the security fence to ultimately locate and mark IV-N4B.

Measurements from C.S. 76 - 59 found the distance between the north and south boundary of Tax Lot 400 south from IV-N4A to be 350' (Map 1). Measurements from the 2002 aerial photo found the distance between the north and south boundary of Tax Lot 400 south from IV-N4A to be 1.9" map inches, and the distance south from IV-N4A to the security fence to be .5" (Map 1).



Photo 4. Co-Sponsor Representatives: Leta Neiderheiser, NWOCTA; Kathie Marshall, JCHS; Kathie Hill, For Vannoy Elementary School; Kelly Rarey, Hugo Neighborhood; and Bob Crouse, Fort Vannoy Farms, Inc.

$$\frac{350'}{1.9''} \times \frac{x}{.5''}$$

$$1.9'x = (350')(0.5'')$$

$$x = 92'$$

It is 92' south from IV-N4A to the security fence which is close to off set IV-N4B. The final adjustment for IV-N4B was 20' to the west along the security fence where it intersects with the line of sight between IV-N4A and IV-N3A.

Therefore, the actual measurements to IV-N4B from the 1/4 corner follow.

1. Shoot a bearing south across Vannoy Creek to the security fence, next
2. Measured 90.55' east (90" azimuth), and finally
3. Shoot a bearing north to security fence to ultimately locate and mark IV-N4B.

Jim Ford, Richard Marshall, and Mike Walker took GPS "marks" of IV-N4B.

IV-N4B was marked with a professional carsonite marker donated by NWOCTA.

IV. TRAIL CLASSIFICATION

The OCTA trail classification of IV-N4B is Class 4 - Verified Altered Trail.

V. BE RESPECTFUL

Do not trespass. IV-N4A and IVN4B are located on private property not open to the public, or public property needing permission to access.

VI. MINUTES

Minutes recorded by Mike Walker: August 31, 2011.

Mike Walker, Minutes Secretary & Member
GLO Field Sub-Committee
Hugo Emigrant Trails Committee
Hugo Neighborhood Association & Historical Society
3388B Merlin Rd #195
Grants Pass, Oregon 97526
541-471-8271
Email: hugo@jeffnet.org
Web Page: <http://www.hugoneighborhood.org/>

Minutes were reviewed and edited by the following participating members of the *GLO SubCommittee*: Joe Neiderheiser, Kelly Rarey, and Mike Walker. Minutes were approved by the participating members of the *GLO SubCommittee*: Joe Neiderheiser, Kelly Rarey, and Mike Walker.

Email Copies of Final Minutes: Participants of field trip; members of GLO Field Review Sub-Committee; Richard and Kathy Marshall, Directors, Josephine County Historical Society; Bob Crouse, Fort Vannoy Farms, Inc.; Kathie Hill, Principal, Fort Vannoy Elementary School; Jim Kriz, 3rd Grade Teacher at Fort Vannoy Elementary School, Leta Neiderheiser, Member, Hugo Emigrant Trails Committee; Karen Rose, Co-Project Leader, Hugo Emigrant Trails Committee; and Jean Boling, Historic Sites Chair, Josephine County Historical Society.

These final minutes are public and can be shared as the recipients determine desirable.



Photo 5. Kathie, Richard, Joe, Leta, Mike Kathie, Jim, Rene, Jim, and Kelly At the Illinois Valley Road of the Applegate Trail Site IV-N4B

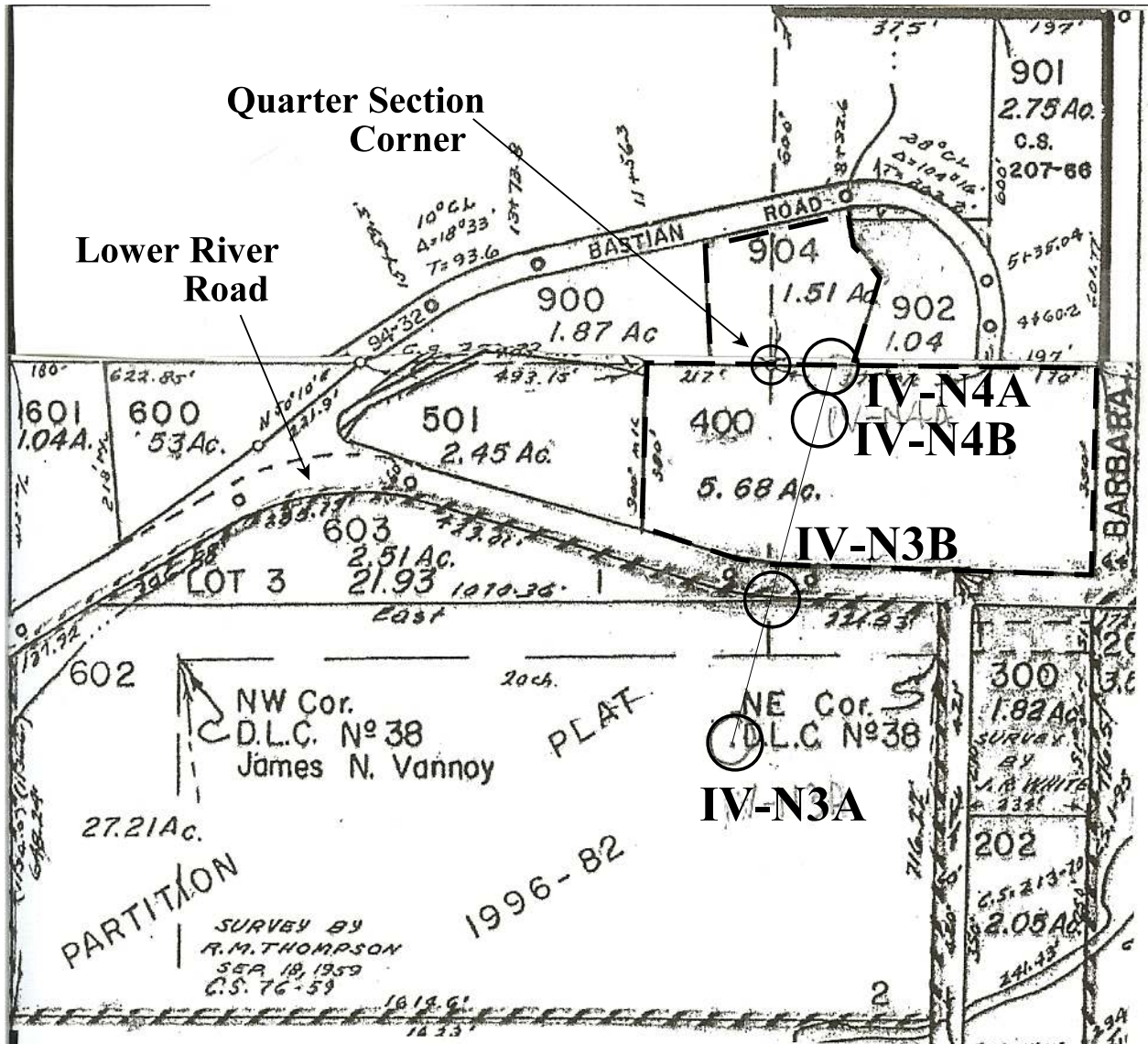
Appendix A. August 25, 2011 Field Trip Participants To Illinois Valley Road of Applegate Trial Sites: IV-N1B Off Set, IV-N3B Off Set, & IV-N4B Off Set,

GLO Field Review *SubCommittee* Members

1. Glen Campbell, *Hugo Neighborhood*
2. Jim Ford, *Hugo Neighborhood & NWOCTA*
3. Rene Ford, *Hugo Neighborhood & NWOCTA*
4. Joe Neiderheiser, *Hugo Neighborhood & NWOCTA*
5. Kelly Rarey, *Hugo Neighborhood*
6. Mike Walker, *Hugo Neighborhood & NWOCTA*

Other Participants

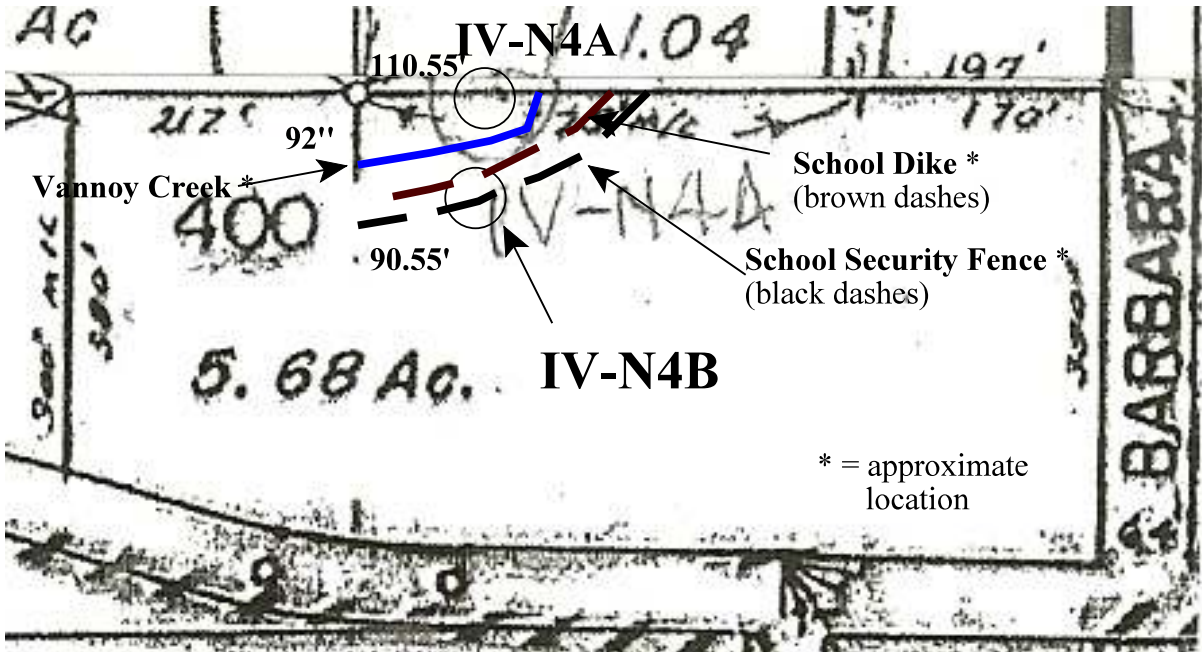
1. Co-Sponsor Fort Vannoy Farms, Inc, Representative Bob Crouse
2. Co-Sponsor Fort Vannoy Elementary School, Representative Kathie Hill, Principal
3. Co-Sponsor, JCHS, Representative Richard Marshall, Director
4. Co-Sponsor, JCHS, Representative Kathy Marshall, Director
5. Co-Sponsor NWOCTA, Representative Leta Neiderheiser & Member *Hugo Neighborhood*
6. Co-Sponsor *Hugo Neighborhood*, Representative Karen Rose; Co-Project Leader, Hugo Emigrant Trails Committee; & NWOCTA Member
7. Jim Kriz, 3rd Grade Teacher at Fort Vannoy Elementary School



Map 1. IV-N4A & Off Set IV-N4B Sites Of Applegate Trail "Fort Vannoy School" Site
 2011 Josephine County Assessor Base Map



Aerial Photo 1. IV-N4A and Off Set IV-N4B Sites of Applegate Trail “Fort Vannoy School”
 2002 Aerial Photo Base Map



Map 2. Off Set Calculations For IV-N4B
 2011 Josephine County Assessor Base Map