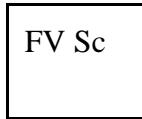


**Minutes of Field Trip To Illinois Valley Road Of Applegate Trail:  
Fort Vannoy School (IV-N4A)**

**GLO Field Survey Sub-Committee, Hugo Emigrant Trails Committee, Inventory Trip  
POI OR-AG-24-36-06-09/16-W-IV-N4A. Fort Vannoy School IV-N4A**

**Thursday, August 4, 2011  
8:00 a.m. - Noon**

**SPONSORS**



**Fort Vannoy Elementary School  
Fort Vannoy Farms, Inc.  
Josephine County Historical Society  
Hugo Neighborhood Association & Historical Society  
NW Chapter Oregon-California Trails Association**

**References**

Web Survey Notes: [http://www.blm.gov/or/landrecords/survey/yNoteView1\\_2.php?R0045OR0082001560](http://www.blm.gov/or/landrecords/survey/yNoteView1_2.php?R0045OR0082001560)  
Web Survey Notes: [http://www.hugoneighborhood.org/Fort\\_Vannoy\\_School\\_IV-N4A.htm](http://www.hugoneighborhood.org/Fort_Vannoy_School_IV-N4A.htm)  
Web Map: <http://www.hugoneighborhood.org/T.36S,R6W,W.M.htm>  
County Survey: 76 - 59



*Photo 1. Fort Vannoy School Applegate Trail Sign*

Oregon GLO 1855 Map: T.36S\_R.6W\_W.M.  
USGS 1996 Wilderville 7.5' Quad  
Josephine County 2011 Assessor Map: Section 16,  
T.36S\_R.6W\_W.M.  
County Survey: 76 - 59  
IV Of Applegate Trail: Fort Vannoy School (IV-N4A)  
Brochure

**Purpose** Members of the General Land Office (GLO) Field Review Sub-Committee (*GLO Sub-Committee*), Hugo Emigrant Trails Committee, to inventory and mark GLO point of interest (POI) site "Fort Vannoy School IV-N4A" of the Applegate Trail (*Trail*). IV-N4A is part of the Fort Vannoy Farms Applegate Trail Project which is to research, locate, and mark trail sites

IV-N1A - IV-N4A, 1855 Vannoy house and barn, and 1846 ford on north and south sides of the Rogue River.

The specific purpose of the August 4, 2011 field trip was to locate the quarter section corner between sections 9 and 16 from the property of the Fort Vannoy Elementary School. This would prepare the larger Hugo Emigrant Trails Committee to locate and mark IV-N4A during a field trip scheduled for August 25, 2011.



*Photo 2. Kelly Rarey, Dave Bracken, & Mike Walker: July 28, 2011*

**Participants** There were three participants from the *GLO SubCommittee*: Kelly Rarey, Mike Walker, and Chris Wytcherley, and Dave Bracken, Facilities Manager, Three River School District, as Representative of Kathie Hill, Principal, Fort Vannoy Elementary School (Photo 2, Photo 3, Appendix A).

**Accomplishments** Field trip to Fort Vannoy School IV-N4A area where members of the *GLO Sub-Committee* located the 1/4 corner.

## **I. FORT VANNOY SCHOOL SURVEY (IV-N4A) FACTS**

### **A. 1855 GLO Survey (Map 1)**

Chains N89° 5'E West on True Line Between Secs 9 & 16  
**38.60 Road from Ill Valley to Willamette c N & S [38.6 chains = 2,547.6']**

### **B. Stakeholders (Josephine County Assessor Map 2 and Map 3)**

North Boundary Applegate Trail Site IV-N4A: 1.51 Acre (RR 2.5) Tax Lot 904, Section 9, T.36S., R.6W., W.M.

Burns Living Trust  
Brian E & Cynthia M. Burns, Trustees  
545 Bastian Road  
Grants Pass, Oregon 97526

South Boundary Applegate Trail Site IV-N4A: 5.68 Acre (RR 2.5) Tax Lot 400, Section 16, T.36S., R.6W., W.M.

Fort Vannoy Elementary School  
c/o Kathie Hill, Principal  
5250 Upper River Road  
Grants Pass, Oregon 97526-8208



*Photo 3. Kelly Rarey & Chris Wytcherley: August 4, 2011*

**C. Josephine County Survey 76 - 59 (Map 4)**

1855 IV Road at Applegate Trail site Fort Vannoy School IV-N4A is 110.55' (2,658.15' - 2,547.6' = 110.55') East of "Found 1 1/2" Iron Bar" at 1/4 Section Corner between Sections 9 & 16.



*Photo 4. Looking SE From Vannoy Creek Toward School*

**D. 2002 Aerial Photographs (Aerial 1; Aerial 2)**

The 2002 aerial photographs are from the Josephine County GIS program. Sometimes there is a good match between the Josephine County Assessor maps and the aerial photographs and sometimes not. The aerial photos identify Vannoy Creek on an east-west alignment in trees and vegetation south of the section line for IV-N4A and an open area north of the section line at Tax Lot 904.

**E. Josephine County Surveyor's Office**

The Josephine County Surveyor's Office first visited the 1/4 Corner in 1909 and the last time the Office visited this 1/4 corner was January 9, 1997 (CS Book 9, Page 309; Wytcherley July 29, 2011 email; Appendix B). Locating the 1/4 corner would be crucial.

**II. BEARING & DISTANCE WORK (Map 4)**

Scheduled for August 25, 2011 field trip (may not occur as site is in private fenced garden).

**III. GLOBAL POSITION SYSTEM (GPS) WORK**

42" 26' 52.8"	North Latitude (IV-N4A)
123" 24' 51.3"	West Longitude (IV-N4A)

Scheduled for August 25, 2011 field trip (may not occur as site is in private fenced garden).

**IV. AUGUST 4, 2011 FIELD TRIP ACCOMPLISHMENTS**

Field trip to Fort Vannoy School IV-N4A area where members of the *GLO Sub-Committee* located the 1/4 corner between sections 9 and 16 on the property of the Fort Vannoy Elementary School and the Burns Living



*Photo 5. Vannoy Creek*

Trust property. The field trip was actually two field trips. The first field trip was where Kelly and Mike found the general area of the 1/4 corner from information in Maps 1 - 4 and Aerials 1 - 2. Tax Lot 904, Section 9, T.36S., R.6W., W.M. was one key to locating the 1/4 corner. Its eastern boundary is the relocated Vannoy Creek (Map 2). Its southern boundary is north of the dike and the blackberries of Vannoy Creek.



*Photo 6. SW Corner Of Garden*

The area of interest (i.e., 1/4 corner and IV-N4A) was located on two different Josephine County Assessor map sections (i.e., Sections 16 and 9).

Splicing these two sections together was not a perfect fit for Bastian Road (Map 3). However, the value was understanding the relationship of private Tax Lot 904 and public Fort Vannoy Elementary School Tax Lot 400.



*Photo 7. 8' Fence Post At SW Corner of Garden*

The *GLO Sub-Committee* found and hacked two trails to the 1/4 corner both from the west and from the east in Vannoy Creek. Being in Vannoy Creek was like being in the bottom of a narrow deep canyon with high blackberry bushes and canopy trees for much of the travel. Kelly and Mike believed the monument was at the SE corner of a garden, but it was not viewed above ground. They decided to travel to the Josephine County Surveyor's Office for more specific information on the 1/4 corner (Appendix B). This information made all the difference when three participants from the *GLO SubCommittee* (Kelly Rarey, Mike Walker, and Chris Wytcherley) returned to the SE corner of the garden.

The 1/4 corner (Section I.E.; Appendix B) would be crucial from which to locate and mark IV-N4A. The following 1997 survey facts from CS Book 9, Page 309 for the 1/4 corner were

confirmed on the ground by the *GLO Sub-Committee* when the monument was found about 8 inches below the surface of the ground.



**Photo 8. Kelly & Cris at 1/4 Corner:  
Iron Rod & Solitary Metal Fence Post**

**Brass Cap** Monumented with a 2" diameter Iron Pipe, 6" below surface, with Brass Cap.

**Iron Rod** An Iron Rod 5/8 diameter, bears North 4.5 Feet.

**8 Ft Fence Post** A 5" diameter treated fence post, 8 Ft tall above ground, the SW Corner of a garden with wire extending Northerly and Easterly, bears S80" E, 11.12 Feet to a nail at side center in the base with a 1" x 1 1/8" aluminum tag attached, stamped "CS BO".

**Metal Building** The SE Corner of a metal building, bears N86" W, 84.33 Feet to a nail in a wood beam at the base of the building, with a 1" x 1 1/8" aluminum tag attached, stamped "CS BO".

**Solitary Metal Fence Post** Corner lies at East base of a solitary metal fence post, +/- 15' North of high bank of FT. Vannoy Creek.

In summary, the 1/4 corner common to Sections 9 and 16 was found by the *GLO Sub-Committee* from which measurements can be made to locate IV-N4A at the scheduled August 25, 2011 field trip.

#### **IV. TRAIL CLASSIFICATION**

Scheduled for August 25, 2011 field trip.

#### **V. BE RESPECTFUL**

*Do not trespass. IV-N4A is located on private property not open to the public, or public property needing permission to access.*



**Photo 9. Aluminum Tag At Metal Shed & 1/4 Corner**

#### **VI. MINUTES**

Minutes recorded by Mike Walker: August 8, 2011.

Mike Walker, Minutes Secretary & Member  
GLO Field Sub-Committee  
Hugo Emigrant Trails Committee  
Hugo Neighborhood Association & Historical Society  
3388B Merlin Rd #195  
Grants Pass, Oregon 97526  
541-471-8271  
Email: hugo@jeffnet.org  
Web Page: <http://www.hugoneighborhood.org/>

Minutes were reviewed and edited by the following participating members of the *GLO SubCommittee*: Kelly Rarey, Mike Walker, and Chris Wytcherley. Minutes were approved by the participating members of the *GLO SubCommittee*: Kelly Rarey, Mike Walker, and Chris Wytcherley.

Email Copies of Final Minutes: Participants of field trip; members of GLO Field Review Sub-Committee; Bob Crouse, Fort Vannoy Farms, Inc.; Kathie Hill, Principal, Fort Vannoy Elementary School; Leta Neiderheiser, Member, Hugo Emigrant Trails Committee; Karen Rose, Co-Project Leader, Hugo Emigrant Trails Committee; and Jean Boling, Historic Sites Chair, Josephine County Historical Society.



*Photo 10. 1/4 Corner Monument With 2" Diameter Iron Pipe With Brass Cap*

These final minutes are public and can be shared as the recipients determine desirable.

## Appendix A. Participants: GLO Field Review SubCommittee Members

Kelly Rarey, Member GLO Field Sub-Committee Hugo Emigrant Trails Committee 275 Canyon Oak Drive Grants Pass, Oregon 97526 541-471-0859	*****  Others  Dave Bracken, Facilities Manager, Three River School District Representative of Fort Vannoy Elementary School 126 Ringuette Street Grants Pass, OR 97527 541-218-5186
Mike Walker, Member GLO Field Sub-Committee Hugo Emigrant Trails Committee 3388B Merlin Rd #195 Grants Pass, Oregon 97526 541-471-8271	
Chris Wytcherley, Member GLO Field Sub-Committee Hugo Emigrant Trails Committee P. O. 108 Glendale, Oregon 97442 Home 541-832-2319 Cell 541-660-6273	

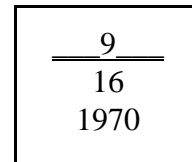
## Appendix B. Josephine County Surveyor's Office

The Josephine County Surveyor's Office first visited 1/4 Section Corner in 1909 and the last time the Office visited this 1/4 corner was January 9, 1997. The following is from CS Book 9, Page 309 which describes the 1997 information reestablishing the 1/4 corner (Wytcherley July 29, 2011 email).

\*\*\*\*\*

THE QUARTER CORNER COMMON TO SECTIONS 9 AND 16, TOWNSHIP 36 SOUTH, RANGE 6 WEST, W.M., JOSEPHINE COUNTY, OREGON.

Monumented with a 2" diameter Iron Pipe, 6" below surface, with Brass Cap marked:



As rehabilitated by the County Surveyor per CS Bk. 6 P. 1.  
From which the remaining bearing objects established per CS Bk. 6 P.1:

An Iron Rod 5/8 diameter, bears North 4.5 Feet. There is no fence post at rod as recorded in earlier visits.

A sawed Ponderosa Pine stump, 34" diameter, bears N63" E, 127.5 Feet, blaze healed.

From which new Bearing Objects:

A 5" diameter treated fence post, 8 Ft tall above ground, the SW Corner of a garden with wire extending Northerly and Easterly, bears S80" E, 11.12 Feet to a nail at side center in the base with a 1" x 1 1/8" aluminum tag attached, stamped "CS BO".

The SE Corner of a metal building, bears N86" W, 84.33 Feet to a nail in a wood beam at the base of the building, with a 1" x 1 1/8" aluminum tag attached, stamped "CS BO".

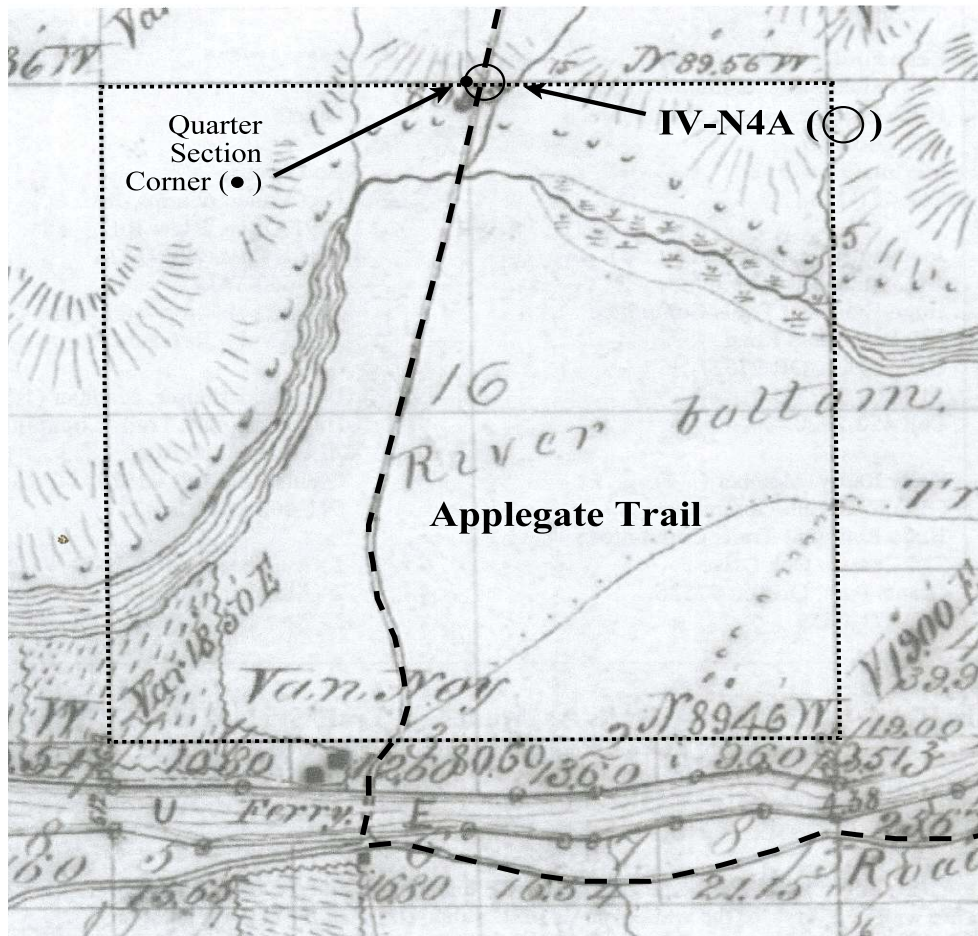
Corner lies at East base of a solitary metal fence post, +/- 15' North of high bank of FT. Vannoy Creek.

January 9, 1997

Roger T. Reece, County Surveyor

Witnesses: P. Allen  
M. Gilmore

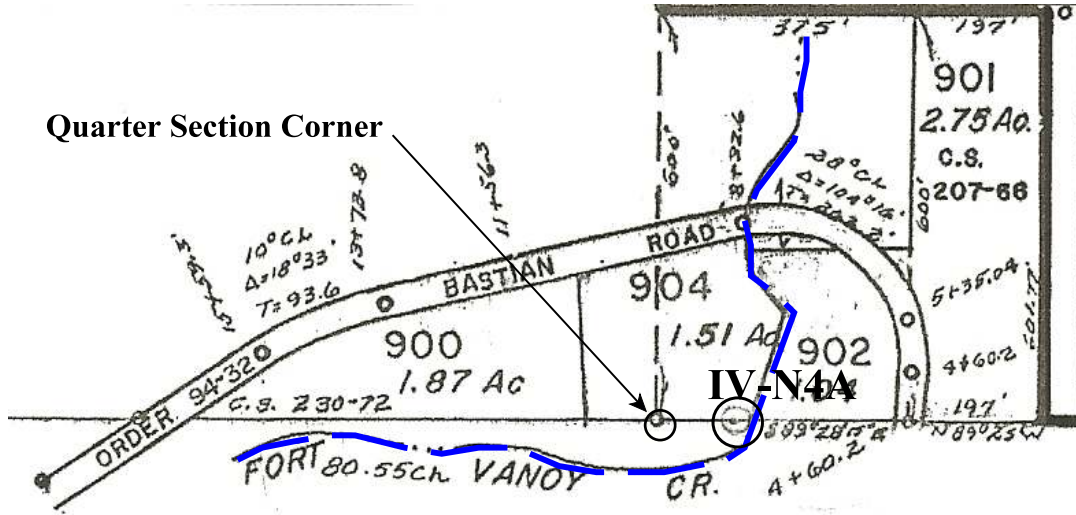




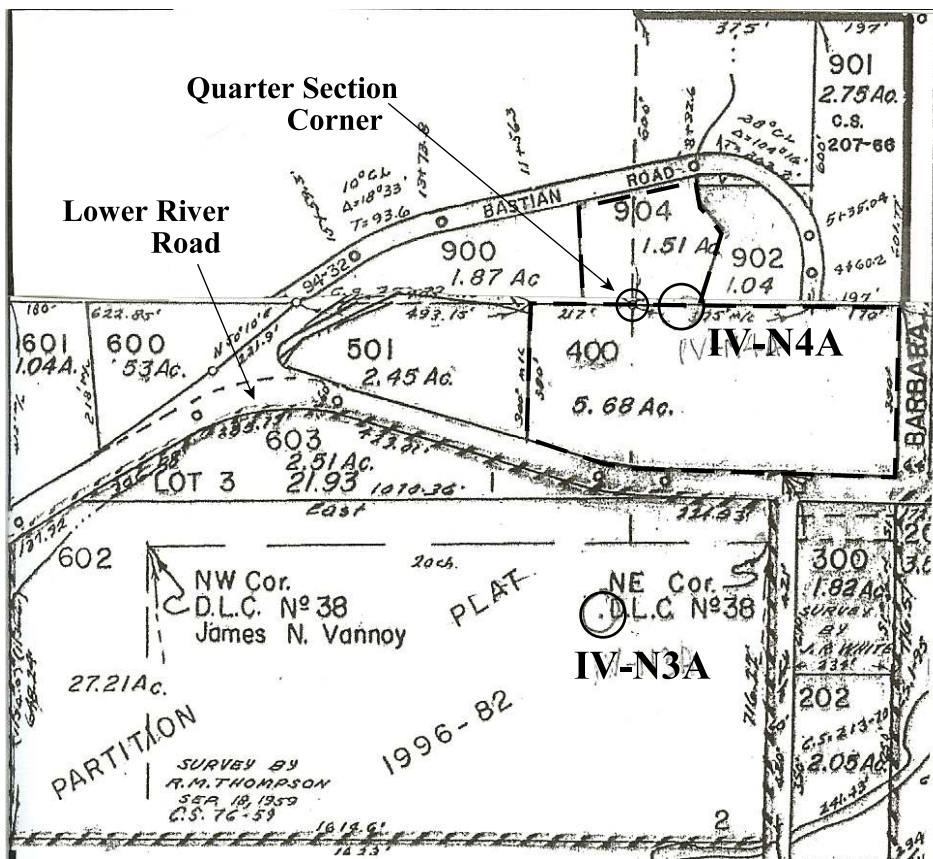
**Map 1. Applegate Trail Site “Fort Vannoy School: IV-N4A”**  
 1855 GLO Map, Section 16, T.36S., R.6W., W.M.

### 1855 GLO Survey for IV-N4A

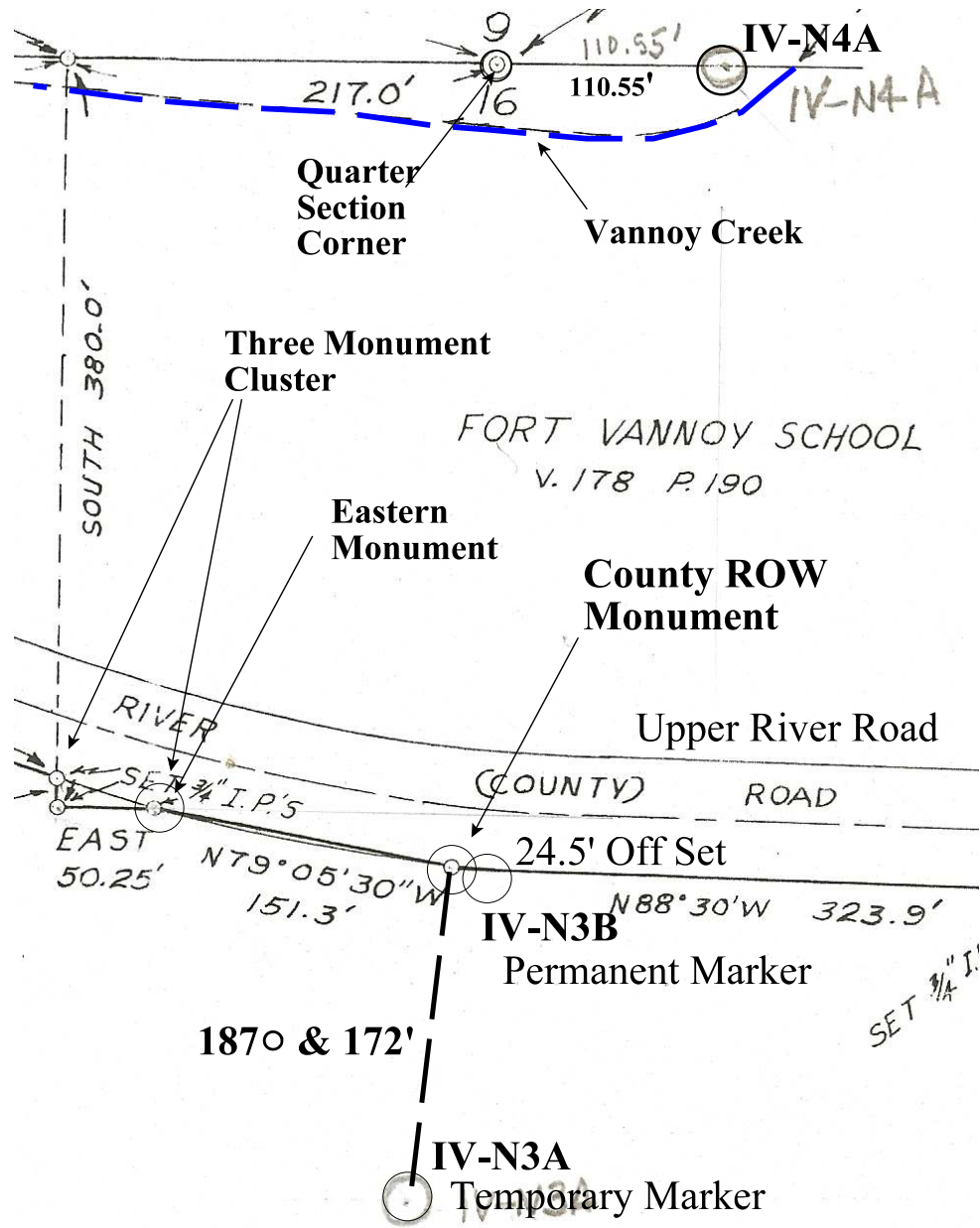
<u>Chains</u>	N89" 5'E West on True Line Between Secs 9 & 16
34.15	Stream 15 lks wide c SW [34.15 chains = 2,253.9']
37.50	Swale Ground c N & S [37.5 chains = 2,475']
<b>38.60</b>	<b>Road from Ill Valley to Willamette c N &amp; S [38.6 chains = 2,547.6']</b>
40.27½	Set qr Sec Post (From Which)
	a Y. Pine 48 in dia bears N70E 15 lks
	a Do 54 in dia bears S60E 87 15 lks
	40.27½ chains = 2,658.15']
80.55	To Sec Cor [80.55 chains = 5,316.3']



**Map 2. IV-N4A Applegate Trail Site "Fort Vannoy School"**  
 Tax Lot 904, Section 9, T36S., R.6W., W.M.



**Map 3. IV-N4A Applegate Trail "Fort Vannoy School" Site**  
 Tax Lot 904, Section 9, T.36S., R.6W., W.M.  
 Tax Lot 400, Section 16, T.36S., R.6W., W.M.



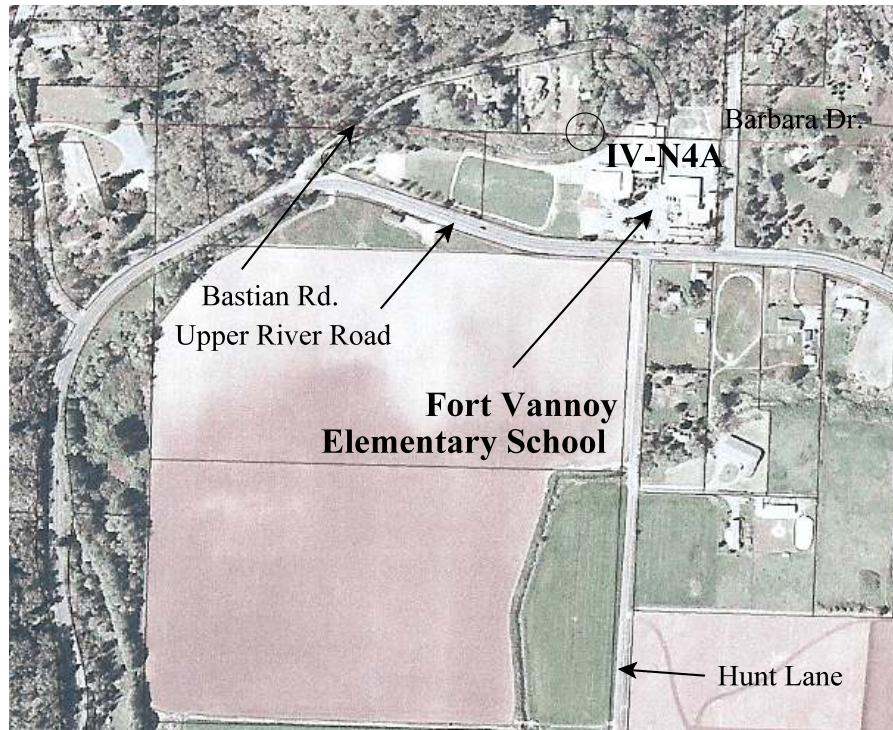
**Map 4. IV-N4A Applegate Trail Site "Fort Vannoy School"**  
 Josephine County Survey 76-59

**Josephine County Survey 76 - 59 (Map 4)**

The 1855 IV Road at Applegate Trail site Fort Vannoy School IV-N4A is 110.55' East of "Found 1 1/2" Iron Bar; I scribe: 34" B. Oak, N88" W, 70.0', 36" B. Oak, S76" E, 67.5"' at 1/4 Section Corner between Sections 9 & 16.



***Aerial 1. IV-N4A Applegate Trail Site "Fort Vannoy School"***  
 2002 Aerial Photograph Base Map



***Aerial 2. IV-N4A Applegate Trail Site "Fort Vannoy School"***  
 2002 Aerial Photograph Base Map