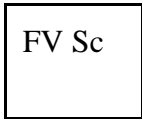


**Minutes of Field Trip To Illinois Valley Road Of Applegate Trail:
Fort Vannoy School (IV-N4A)**

**GLO Field Survey Sub-Committee, Hugo Emigrant Trails Committee, Inventory Trip
POI OR-AG-24-36-06-09/16-W-IV-N4A. Fort Vannoy School IV-N4A**

**Thursday, July 28, 2011
8:00 a.m. - 9:20 a.m.**

SPONSORS



**Fort Vannoy Elementary School
Fort Vannoy Farms, Inc.
Josephine County Historical Society
Hugo Neighborhood Association & Historical Society
NW Chapter Oregon-California Trails Association**

References

- Web Survey Notes: http://www.blm.gov/or/landrecords/survey/yNoteView1_2.php?R0045OR0082001560
- Web Survey Notes: http://www.hugoneighborhood.org/Fort_Vannoy_School_IV-N4A.htm
- Web Map: <http://www.hugoneighborhood.org/T.36S,R6W,W.M.htm>
- County Survey: 76 - 59
- Oregon GLO 1855 Map: T.36S_R.6W_W.M.
- USGS 1996 Wilderville 7.5' Quad
- Josephine County 2011 Assessor Map: Section 16, T.36S_R.6W_W.M.
- County Survey: 76 - 59
- IV Of Applegate Trail: Fort Vannoy School (IV-N4A) Brochure



Photo 1. Fort Vannoy Elementary School

Purpose Members of the General Land Office (GLO) Field Review Sub-Committee (*GLO Sub-Committee*), Hugo Emigrant Trails Committee, to inventory and mark GLO point of interest (POI) site "Fort Vannoy School IV-N4A" of the Applegate Trail (*Trail*). IV-N4A is part of the Fort Vannoy Farms Applegate Trail Project which is to research, locate, and mark trail sites IV-N1A - IV-N4A, 1855 Vannoy house and barn, and 1846 ford of north and south sides of the Rogue River.

The specific purpose of the July 28, 2011 field trip was to locate the quarter section corner between sections 9 and 16 on the property of the Fort Vannoy Elementary School. This would prepare the larger Hugo Emigrant Trails Committee to locate and mark IV-N4A during a field trip scheduled for August 25, 2011.



Photo 2. Kelly Rarey, Dave Bracken, & Mike Walker: July 28, 2011

Participants There were two participants from the *GLO SubCommittee*: Kelly Rarey, and Mike Walker, and Dave Bracken, Facilities Manager, Three River School District, as Representative of Kathie Hill, Principal, Fort Vannoy Elementary School (Photo 2, Photo 3, Appendix A).

Accomplishments Field trip to Fort Vannoy School IV-N4A area where members of the *GLO Sub-Committee* tried to locate the quarter section corner between sections 9 and 16 on the property of the Fort Vannoy Elementary School.

I. FORT VANNOY SCHOOL SURVEY (IV-N4A) FACTS

A. 1855 GLO Survey (Map 1)

Chains N89° 5'E West on True Line Between Secs 9 & 16
38.60 Road from Ill Valley to Willamette c N & S [38.6 chains = 2,547.6']

B. Stakeholders (Josephine County Assessor Map 2 and Map 3)

North Boundary Applegate Trail Site IV-N4A: 1.51 Acre (RR 2.5) Tax Lot 904, Section 9, T.36S., R.6W., W.M.

Burns Living Trust
Brian E & Cynthia M. Burns, Trustees
545 Bastian Road
Grants Pass, Oregon 97526

South Boundary Applegate Trail Site IV-N4A: 5.68 Acre (RR 2.5) Tax Lot 400, Section 16, T.36S., R.6W., W.M.

Kathie Hill, Principal
Fort Vannoy Elementary School
5250 Upper River Road
Grants Pass, Oregon 97526-8208



Photo 3. Kathie Hill, Principal, Fort Vannoy School

C. Josephine County Survey (Map 4)

1855 IV Road at Applegate Trail site Fort Vannoy School IV-N4A is 110.55' (2,658.15' - 2,547.6' = 110.55') East of Found 1 1/2" Iron Bar at 1/4 Section between Sections 9 & 16 .



Photo 4. Kelly Rarey on Dike Protecting School From Winter Flooding of Vannoy Creek

D. 2002 Aerial Photographs (Aerial 1; Aerial 2)

The 2002 aerial photographs are from the Josephine County GIS program. Sometimes there is a good match between the Josephine County Assessor maps and the aerial photographs and sometimes not. The aerial photos identify Vannoy Creek on an east-west alignment in trees and vegetation south of the section line for IV-N4A and an open area north of the section line at Tax Lot 904.

II. BEARING & DISTANCE WORK (Map 4)

Scheduled for August 25, 2011 field trip.

III. GLOBAL POSITION SYSTEM (GPS) WORK

42" 26' 52.8" North Latitude (IV-N4A)
123" 24' 51.3" West Longitude (IV-N4A)

Scheduled for August 25, 2011 field trip.

IV. FIELD TRIP ACCOMPLISHMENTS

Field trip to Fort Vannoy School IV-N4A area where members of the *GLO Sub-Committee* tried to locate the quarter section corner between sections 9 and 16 on the property of the Fort Vannoy Elementary School.

The team had a small scale aerial photograph of the Rogue River to Fort Vannoy Elementary School which lead them to the northern boundary of the developed school property and its security fence.



Photo 5. Dave Bracken & Kelly Rarey

The area of interest north of the security gate was comprised of a major dike protecting the school from a relocated Vannoy Creek and a maze of blackberries. Some major hazard fuels reduction work had been completed in the blackberries and parts of the area were partially passable. Some time was spent by the participants at the east-west northern security fence at the northeastern part of the fenced school property with the hypothesis that it might be the section line, it was not. The section line was approximately 100 feet to the south of this NE portion of the east-west fence line.



Photo 6. IV-N4A Somewhere On Left Side of Photo Behind Blackberries and Vegetation in Vannoy Creek

It turned out that Tax Lot 904, Section 9, T.36S., R.6W., W.M. was the key to locating the quarter section corner between sections 9 and 16. Its eastern boundary is the relocated Vannoy Creek (Map 2). Its southern boundary is north of the dike and the blackberries of Vannoy Creek. The hypothesis is that the south wall of a large shed on the SW portion of Tax Lot 904's southern boundary, which can be viewed from the school property, is approximately the section line between sections 16 and 9 (Aerial 1).

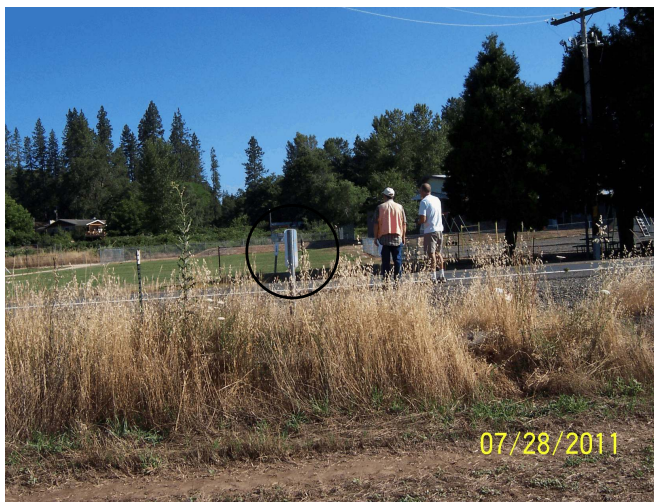


Photo 7. Kelly Rarey & Dave Bracken Viewing Fort Vannoy School Grounds From South Of Upper River Road At County ROW Monument

The area of interest was in two different Josephine County Assessor map sections (i.e., Sections 16 and 9). Splicing these two sections together was not a perfect fit for Bastian Road (Map 3). However, the value was understanding the relationship of private Tax Lot 904, Section 9, T.36S., R.6W., W.M. and public Fort Vannoy Elementary School Tax Lot 400, Section 16, T.36S., R.6W., W.M.

In summary, the quarter section corner between sections 9 and 16 was not found. More office work and another field trip will be required prior to the scheduled July 25, 2011 field trip. The Josephine County Surveyor's Office will be contacted for

information on the quarter section corner between sections 9 and 16 and the private property

owner of Tax Lot 904 will be contacted for permission to cross their property to locate and mark IV-N4A.

IV. TRAIL CLASSIFICATION

Scheduled for July 25, 2011 field trip.

V. BE RESPECTFUL

Do not trespass. IV-N4A is located on private property not open to the public, or public property needing permission to access.

VI. MINUTES

Minutes recorded by Mike Walker: August 1, 2011

Mike Walker, Minutes Secretary & Member
GLO Field Sub-Committee
Hugo Emigrant Trails Committee
Hugo Neighborhood Association & Historical Society
3388B Merlin Rd #195
Grants Pass, Oregon 97526
541-471-8271
Email: hugo@jeffnet.org
Web Page: <http://www.hugoneighborhood.org/>

Minutes were reviewed and edited by the following participating members of the *GLO SubCommittee*: Kelly Rarey, and Mike Walker. Minutes were approved by the participating members of the *GLO SubCommittee*: Kelly Rarey, and Mike Walker

Email Copies of Final Minutes: Participants of field trip; members of GLO Field Review Sub-Committee; Bob Crouse, Fort Vannoy Farms, Inc.; Kathie Hill, Principal, Fort Vannoy Elementary School; Leta Neiderheiser, Member, Hugo Emigrant Trails Committee; Karen Rose, Co-Project Leader, Hugo Emigrant Trails Committee; and Jean Boling, Historic Sites Chair, Josephine County Historical Society.

These final minutes are public and can be shared as the recipients determine desirable.

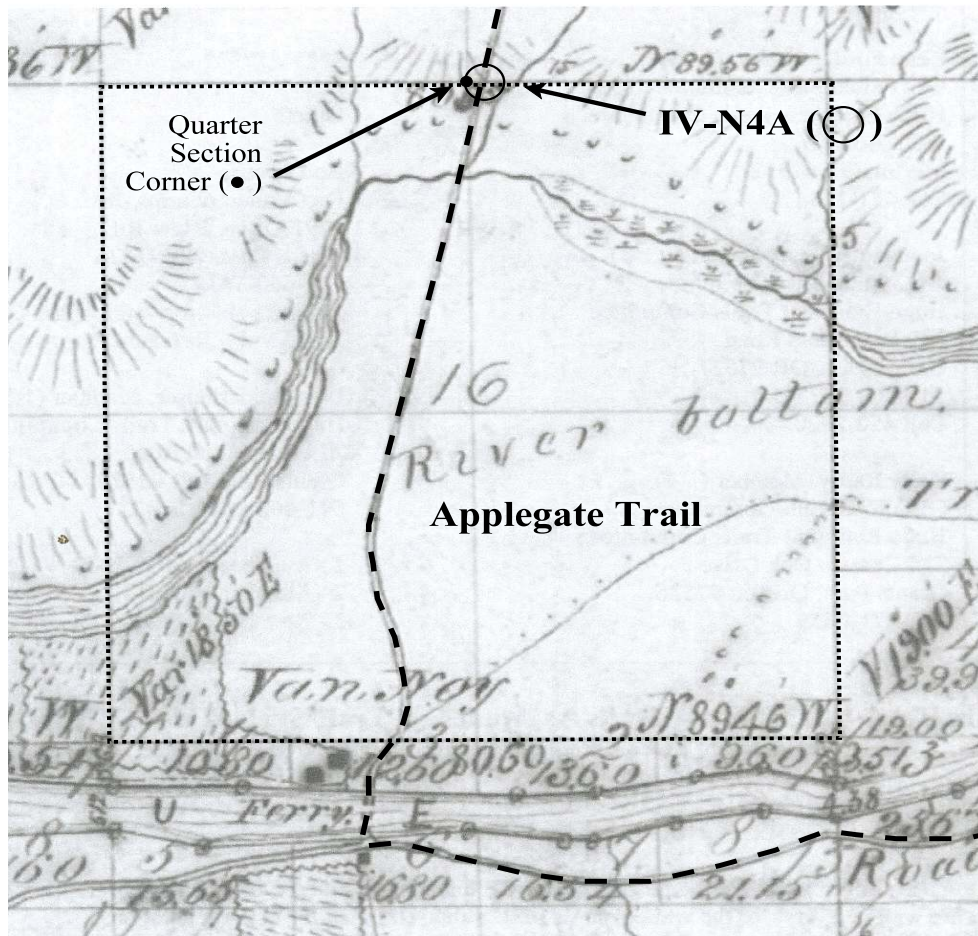
Appendix A. Participants: GLO Field Review SubCommittee Members

Kelly Rarey, Member
GLO Field Sub-Committee
Hugo Emigrant Trails Committee
275 Canyon Oak Drive
Grants Pass, Oregon 97526
541-471-0859

Mike Walker, Member
GLO Field Sub-Committee
Hugo Emigrant Trails Committee
3388B Merlin Rd #195
Grants Pass, Oregon 97526
541-471-8271

Others

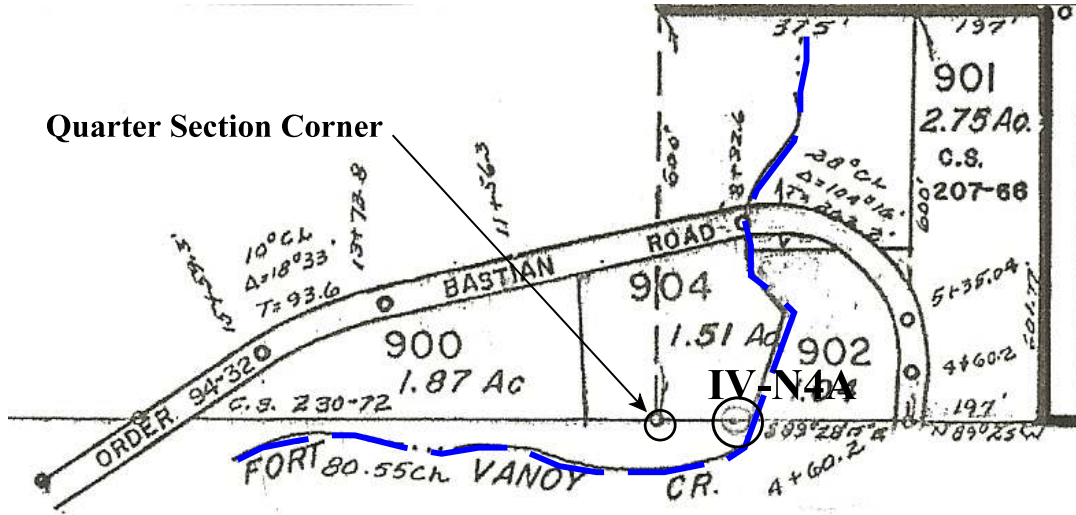
Dave Bracken, Facilities Manager,
Three River School District
Representative of Fort Vannoy Elementary School
126 Ringuette Street
Grants Pass, OR 97527
541-218-5186



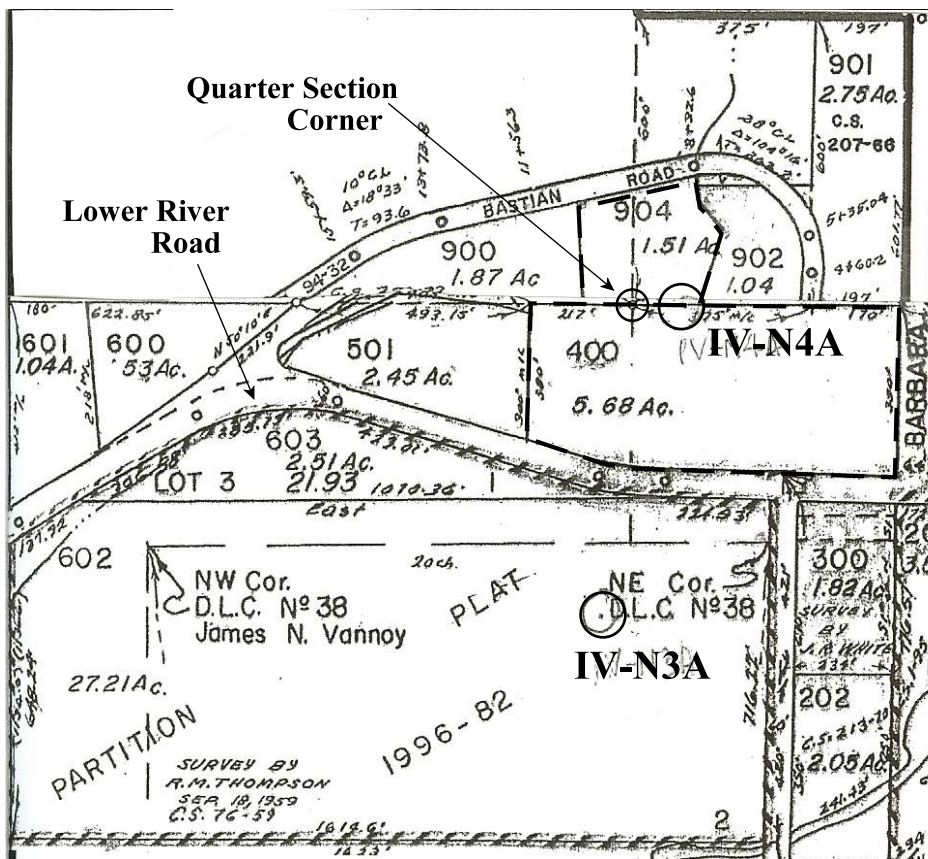
Map 1. Applegate Trail Site “Fort Vannoy School: IV-N4A”
1855 GLO Map, Section 16, T.36S., R.6W., W.M.

1855 GLO Survey for IV-N4A

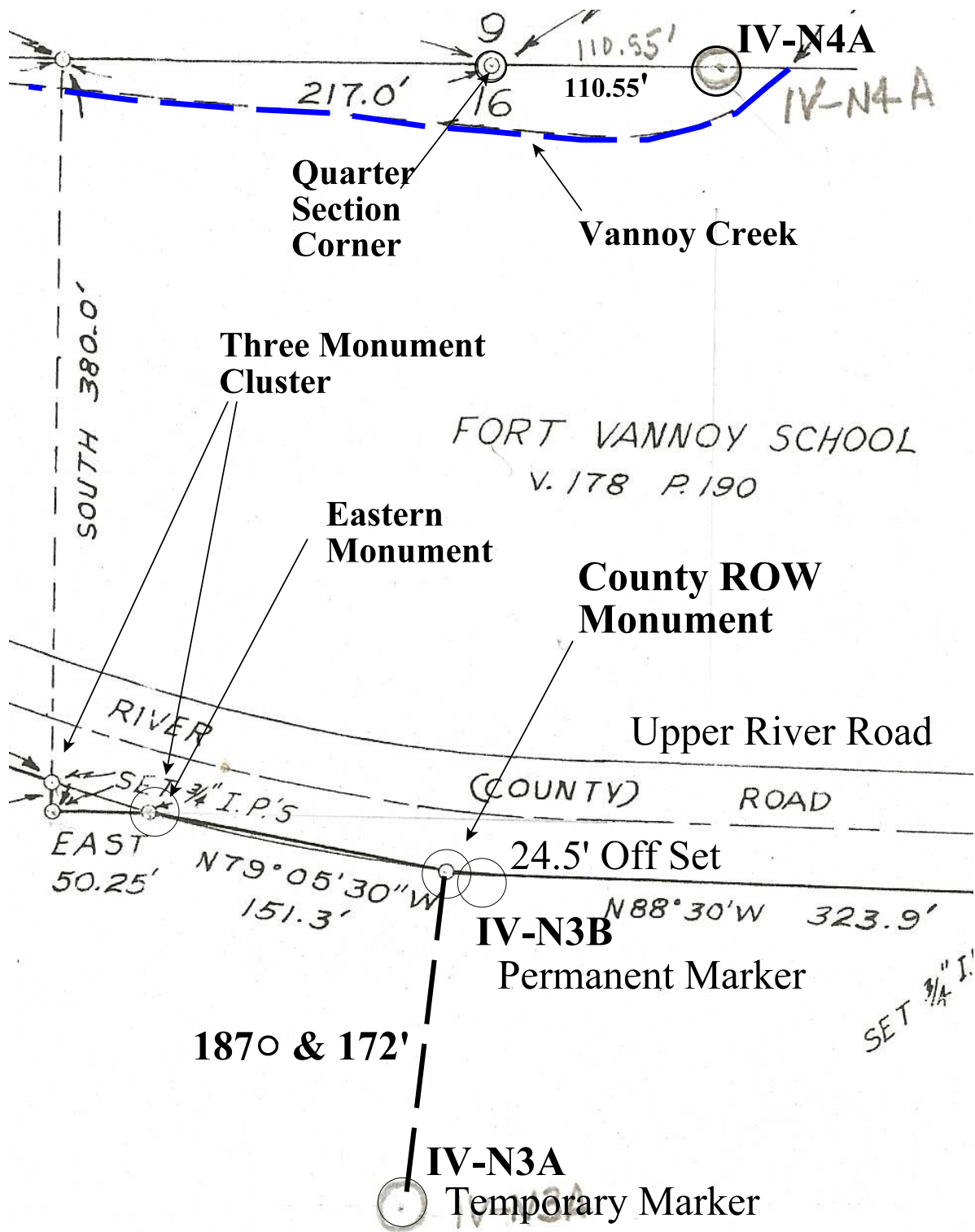
<u>Chains</u>	N89" 5'E West on True Line Between Secs 9 & 16
34.15	Stream 15 lks wide c SW [34.15 chains = 2,253.9']
37.50	Swale Ground c N & S [37.5 chains = 2,475']
38.60	Road from Ill Valley to Willamette c N & S [38.6 chains = 2,547.6']
40.27½	Set qr Sec Post (From Which)
	a Y. Pine 48 in dia bears N70E 15 lks
	a Do 54 in dia bears S60E 87 15 lks
	40.27½ chains = 2,658.15']
80.55	To Sec Cor [80.55 chains = 5,316.3']



Map 2. IV-N4A Applegate Trail Site "Fort Vannoy School"
 Tax Lot 904, Section 9, T36S., R.6W., W.M.



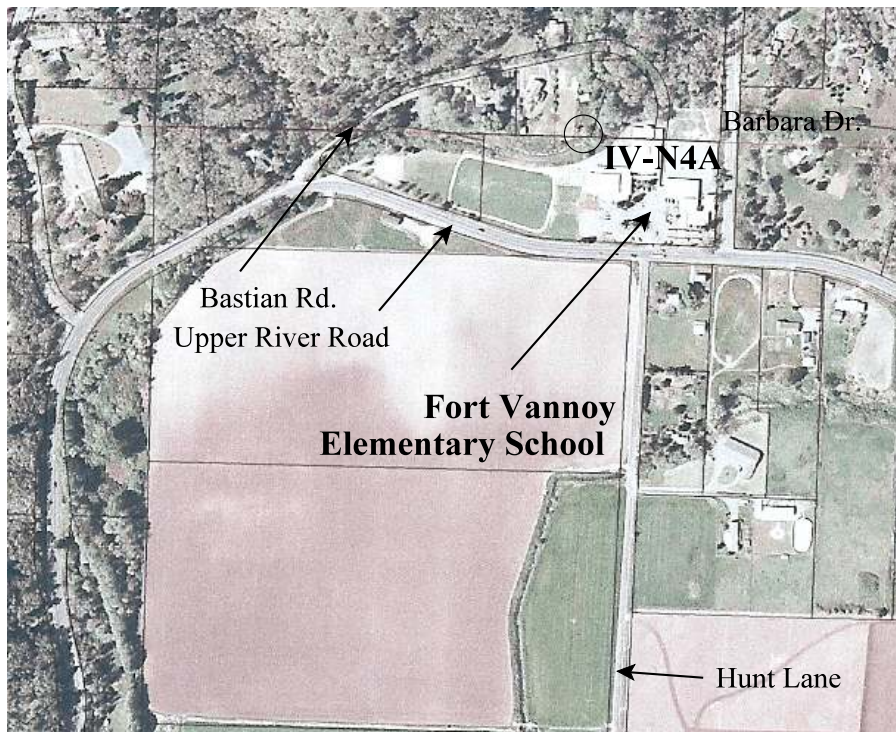
Map 3. IV-N4A Applegate Trail "Fort Vannoy School" Site
 Tax Lot 904, Section 9, T.36S., R.6W., W.M.
 Tax Lot 400, Section 16, T.36S., R.6W., W.M.



Map 4. IV-N4A Applegate Trail Site "Fort Vannoy School"
 Josephine County Survey 76-59



Aerial 1. IV-N4A Applegate Trail Site “Fort Vannoy School”
 2002 Aerial Photograph Base Map



Aerial 2. IV-N4A Applegate Trail Site “Fort Vannoy School”
 2002 Aerial Photograph Base Map