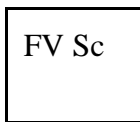


**Minutes of Field Trip To Illinois Valley Road Of Applegate Trail:
North Lindsey Applegate Prairie IV-N3A/IV-N3B**

**GLO Field Survey Sub-Committee, Hugo Emigrant Trails Committee, Inventory Trip
POI OR-AG-24-36-06-16-n/a-IV-N3A. North Lindsey Applegate Prairie IV-N3A/ IV-N3B**

**Thursday, August 25, 2011
8:00 a.m. - 10:00 a.m.**

SPONSORS



**Fort Vannoy Elementary School
Fort Vannoy Farms, Inc.
Josephine County Historical Society
Hugo Neighborhood Association & Historical Society
NW Chapter Oregon-California Trails Association**

Web Survey Notes: <http://www.blm.gov/or/landrecords/survey/ySrvy2b.php?1741741000000>

Web Survey Notes: http://www.hugoneighborhood.org/Rogue_River_Vannoy_Ferry_Crossing_IV_N1A.htm Web

Map: http://www.hugoneighborhood.org/T.36S_R.6W_W.M._DLC_map.htm

Oregon GLO 1855 Map: T.36S_R.6W_W.M.

USGS 1996 Wilderville 7.5' Quad

2002 Aerial Photo

Josephine County 2011 Assessor Map: Section 16, T.36S_R.6W_W.M.

County Survey: 76 - 59

IV Of Applegate Trail: Fort Vannoy Farms (IV-N2A) Brochure

June 9, 2011 Minutes of Field Trip "North Lindsey Applegate Prairie IV-N3A/ IV-N3B" of the Applegate Trail

**IV RR NORTH 3 VANNOY DLC 2 (JAMES N. VANNOY 1857 DLC NO. 38)
(IV-N3A) NORTH LINDSEY APPLLEGATE PRAIRIE**

Purpose Members of the General Land Office (GLO) Field Review Sub-Committee (*GLO Sub-Committee*), Hugo Emigrant Trails Committee, to inventory and mark GLO point of interest (POI) site "North Lindsey Applegate Prairie IV-N3A/IV-N3B" of the Applegate Trail (*Trail*). IV-N3B Off Set is part of the Fort Vannoy Farms Applegate Trail Project (Map1) which is to research, locate, and mark trail sites IV-N1A - IV-N4A, the 1855 Vannoy house and barn, and the 1846 ford on the south and north sides of the Rogue River.

Participants On August 25, 2011 there were six participants from the *GLO SubCommittee*: Glen Campbell, Jim and Rene Ford, Joe Neiderheiser, Kelly Rarey, and Mike Walker. Other participants were Karen Rose, *Hugo Neighborhood*; Richard and Kathy Marshall, Directors,

Josephine County Historical Society (JCHS); Leta Neiderheiser, Member, Northwest Chapter of the Oregon California Trails Association (NWOCTA) & Hugo Emigrant Trails Committee; Bob Crouse, Fort Vannoy Farms, Inc.; Kathie Hill, Principal, Fort Vannoy Elementary School; and Jim Kriz, 3rd Grade Teacher at Fort Vannoy Elementary School (Appendix A).

Accomplishments Field trip to **North Lindsey Applegate Prairie IV-N3B Off Set** area where members of the *GLO Sub-Committee* located and marked IV-N3B with a professional carsonite marker (Map 1; Photos 1 - 5).

I. NORTH LINDSEY APPLGATE PRAIRIE IV-N3A FACTS

Stakeholder The private property stakeholder is Fort Vannoy Farms, Inc. Permission to locate IV-N3A on the private property was secured by Bob Crouse, Fort Vannoy Farms, Inc.

Bob & Barbara Crouse
 Fort Vannoy Farms, Inc.
 5630 Upper River Road
 Grants Pass, Oregon 97526
 541-660-5630
 Email: bob@fortvannoyfarms.com
 Web: www.fortvannoyfarms.com
 27.22 Acre (EF) Tax Lot 602, Section 16,
 T.36S., R.6W., W.M.



Photo 1. Pounding In Marker at IV-N3B. L to R: Richard, Leta, Jim, Rene & Jim at Pounder, & Joe

James Vannoy Donation Land Claim No. 38 Survey Notes:

<u>Chains</u>	East on the north boundary of C 38
15.50	Trail from Vannoys to Ft. Leland [15.5 chains = 1,023']
20.00	Set a post for the N.E. corner [20 chains = 1,320']

Latitude & Longitude POI Calculated

GPS Work. The Latitude and Longitude Calculated For North Lindsey Applegate Prairie (IV-N3A) follows.

42" 26' 47.1"	North Latitude
123" 24' 53.0"	West Longitude

County Survey Office Work For Field Work

The GLO Field Review SubCommittee could never find a C.S. that specifically located the north boundary of the James N. Vannoy 1857 DLC No. 38. It used the following steps to plot IV-N3A on C.S. 76 - 59.

Step 1. Plot bearing and distance between IV-N3A and IV-N4A on the 1996 USGS Wilderville 7.5' Quad.

Bearing and Distance from IV-N4A to IV-N3A on the 1996 USGS Wilderville 7.5' Quad: 195.3" & 600'

Step 2. Plot 195.3" & 600' from IV-N4A to IV-N3A on C.S. 76 - 59 = IV-N3A.



Photo 2. Pounding In Marker At IV-N3B. L to R: Leta, Jim, Richard, Karen, Kathie, Rene, Jim, Kelly, and Joe

Step 3A. Plot bearing and distance from “Eastern Most Monument” of three monument cluster south of Upper River Road to IV-N3A as plotted on C.S. 76 - 59 (Map 2; protractor is aligned with line between eastern most monument and monument to west).

Bearing and distance from “Eastern Monument” to IV-N3A: 147.5" & 237'

II. JUNE 9, 2011 FIELD TRIP

A. Bearing & Distance Work in Field

The GLO SubCommittee used a metal detector to try and find the Eastern Monument. Members measured the distance from found “County ROW Monument” (Map 1) to the Eastern Monument. However, even with a metal detector the GLO SubCommittee could not find any of the monuments in the three monument cluster. Therefore, no bearing and distance work was accomplished. The GLO SubCommittee committed to an office workshop to measure bearing and distance from the found “County ROW Monument” to IV-N3A.

B. Global Position System (GPS) Work in Field

The bearing and distance between IV-N3A and IV-N4A was plotted on the 1996 USGS Wilderville 7.5' Quad (large scale/small area). The GPS readings to NV-N3A could have been used alone, but their reliability was estimated to be between 20' - 50'. GPS readings were not

made; they were planned in the future to check the bearing and distance method from the County ROW Monument.

C. Accomplishments

Members of the *GLO Sub-Committee* were not able to locate the Eastern Monument which had bearing and distance calculated to IV-N3S to conduct bearing and range measurement. IV-N3A was not located.

III. AUGUST 25, 2011 FIELD TRIP ACCOMPLISHMENTS

On June 30, 2011 the GLO SubCommittee conducted an office workshop to measure bearing and distance from the found “County ROW Monument” to IV-N3A (Map 1). The work was conducted at Walker’s home for IV-N3A and IV-N3B by Jim Ford, Rene Ford, Joe Neiderheiser, Kelly Rarey, and Mike Walker. Leta Neiderheiser, Member, Hugo Emigrant Trails Committee, was an observer. This work was the foundation for the success of the scheduled August 25, 2011 field trip.



Photo 3. Applegate Trail IV-N3B

Plot bearing and distance from “County ROW Monument” in south ROW of Upper River Road to IV-N3A as plotted on C.S. 76 - 59 (Map 1).

Bearing 186.5" from County ROW Monument to IV-N3A, distance 172' Jim Ford
Bearing 187.0" from County ROW Monument to IV-N3A, distance 172' Joe Neiderheiser
Bearing 186.5" from County ROW Monument to IV-N3A, distance 172' Kelly Rarey
Bearing 186.9" from County ROW Monument to IV-N3A, distance 172' Mike Walker
Average $(186.5" + 187.0" + 186.5" + 186.9" = 746.9'4 = 186.725") = 187.0"$ at 172'

Average Bearing and Distance from “County ROW Monument” to IV-N3A: 187.0" & 172'

Planned Temporary and Permanent Marker For IV-N3A The office plan was that a temporary marker would be placed in the field at IV-N3A. A permanent marker would be placed just outside of the Upper River Road Right-of-way on Fort Vannoy Farms, Inc. property, perhaps just south of the irrigation ditch, on a bearing between IV-N3A and IV-N4A. **This off-set is 24.5' east from the known County ROW Monument (Map 1).**

Distance east 24.5' from County ROW Monument. Jim Ford
Distance east 24.0' from County ROW Monument. Joe Neiderheiser
Distance east 24.5' from County ROW Monument. Kelly Rarey

Distance east 25.0' from County ROW Monument. Mike Walker
Average $(24.5' + 24.0' + 24.5' + 25.0' = 98' / 4 = 24.5') = 24.5'$

August 25, 2001 Field Trip Accomplishments - IV-N3B Marked The Applegate Trail site IV-N3B 24.5' Off Set was located and marked with a professional carsonite marker donated by NWOCTA. This permanent marker was located just outside of the Upper River Road right-of-way on Fort Vannoy Farms, Inc. property, just south of the irrigation ditch, on a bearing between IV-N3A and IV-N4A.

Applegate Trail site IV-N3A was not located with a temporary marker as the field corn was 6' - 7' tall at the site.



Photo 4. Applegate Trail Site IV-N3B. L to R: Richard, Leta, Jim, Joe, Rene, Jim, Karen, Kathie, and Kelly

IV. TRAIL CLASSIFICATION

There was a consensus determination by members of the *GLO SubCommittee* that the *Trail* at IV-N3A and IV-N3B had a OCTA trail classification of Class ④ Verified Altered Trail.

V. BE RESPECTFUL

Do not trespass. IV- N3A and IV-N3B are located on private property not open to the public.

VI. MINUTES

Minutes recorded by Mike Walker: September 6, 2011.

Mike Walker, Minutes Secretary & Member
GLO Field Sub-Committee
Hugo Emigrant Trails Committee
Hugo Neighborhood Association & Historical Society
3388B Merlin Rd #195
Grants Pass, Oregon 97526
541-471-8271
Email: hugo@jeffnet.org
Web Page: <http://www.hugoneighborhood.org/>

Minutes were reviewed and edited by the following participating members of the *GLO SubCommittee*: Kelly Rarey, and Mike Walker. Minutes were approved by the participating members of the *GLO SubCommittee*: Kelly Rarey, and Mike Walker.

Email Copies of Final Minutes: Participants of field trip; members of GLO Field Review Sub-Committee; Richard and Kathy Marshall, Directors, Josephine County Historical Society; Bob Crouse, Fort Vannoy Farms, Inc.; Jim Kriz. 3rd Grade Teacher at Fort Vannoy Elementary

School, Leta Neiderheiser, Member, Hugo Emigrant Trails Committee; Karen Rose, Co-Project Leader, Hugo Emigrant Trails Committee; and Jean Boling, Historic Sites Chair, Josephine County Historical Society.

These final minutes are public and can be shared as the recipients determine desirable.

Appendix A. August 25, 2011 Field Trip Participants To Illinois Valley Road of Applegate Trial Site: North Lindsey Applegate Prairie IV-N3B

GLO Field Review *SubCommittee* Members

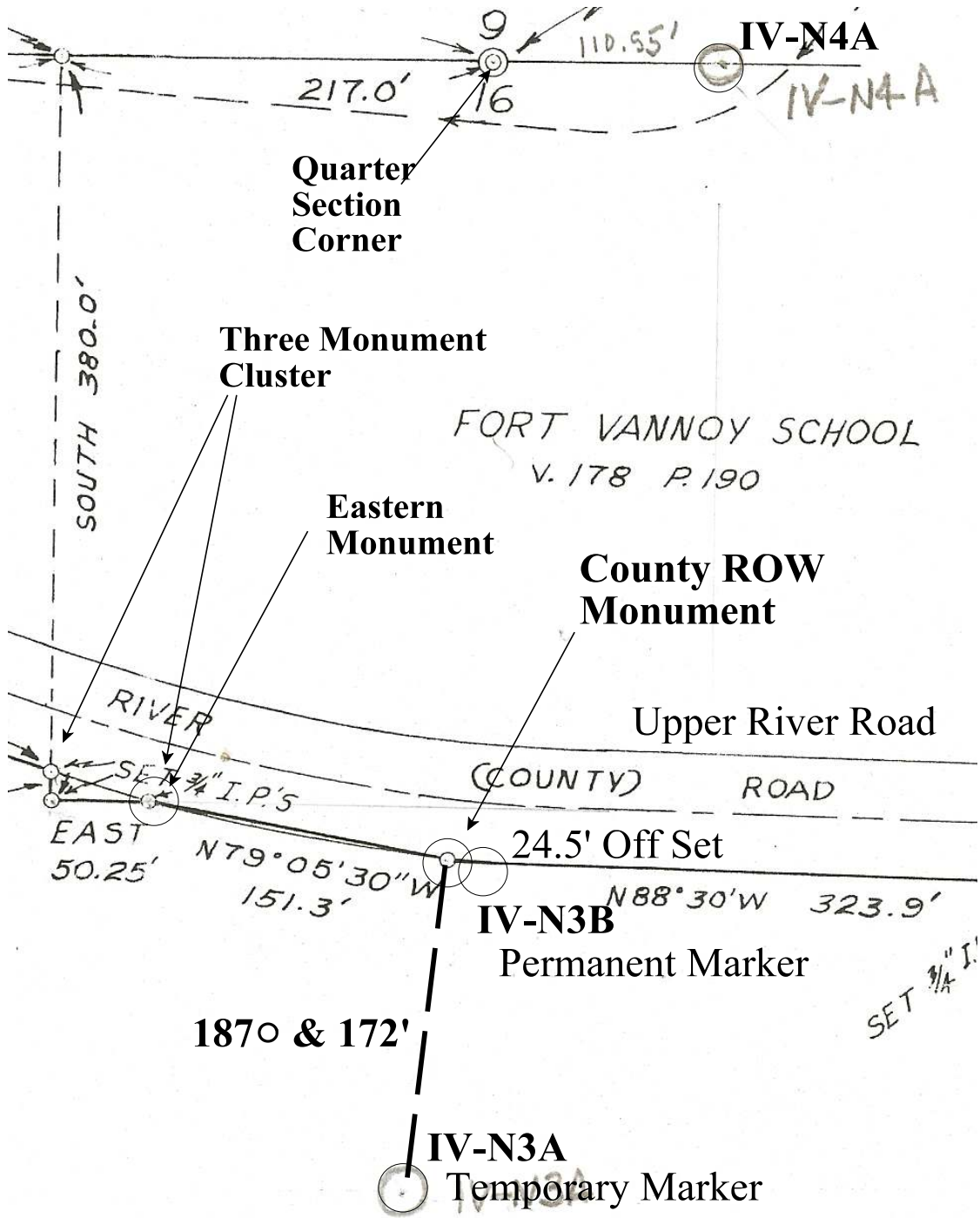
1. Glen Campbell, *Hugo Neighborhood*
2. Jim Ford, *Hugo Neighborhood & NWOCTA*
3. Rene Ford, *Hugo Neighborhood & NWOCTA*
4. Joe Neiderheiser, *Hugo Neighborhood & NWOCTA*
5. Kelly Rarey, *Hugo Neighborhood*
6. Mike Walker, *Hugo Neighborhood & NWOCTA*

Other Participants

1. Co-Sponsor Fort Vannoy Farms, Inc, Representative Bob Crouse
2. Co-Sponsor Fort Vannoy Elementary School, Representative Kathie Hill, Principal
3. Co-Sponsor, JCHS, Representative Richard Marshall, Director
4. Co-Sponsor, JCHS, Representative Kathy Marshall, Director
5. Co-Sponsor NWOCTA, Representative Leta Neiderheiser & Member *Hugo Neighborhood*
6. Co-Sponsor *Hugo Neighborhood*, Representative Karen Rose; Co-Project Leader, Hugo Emigrant Trails Committee; & NWOCTA Member
7. Jim Kriz, 3rd Grade Teacher, Fort Vannoy Elementary School



Photo 5. Applegate Trail Site IV-N3B. L to R: Jim, Rene, Joe, Jim, Richard, Mike, & Kathie



Map 1. IV-N3A & IV-N3B Plotted On 1959 Josephine County Survey 76 - 59