

**Minutes of Field Trip To Illinois Valley Road Of Applegate Trail:  
North Lindsey Applegate Prairie IV-N3A**

**GLO Field Survey Sub-Committee, Hugo Emigrant Trails Committee, Inventory Trip  
POI OR-AG-24-36-06-16-n/a-IV-N3A. North Lindsey Applegate Prairie IV-N3A  
Thursday, June 9, 2011  
Noon - 1:30 p.m.**

**SPONSORS**



**Fort Vannoy Farms, Inc.  
Hugo Neighborhood Association & Historical Society  
Josephine County Historical Society  
NW Chapter Oregon-California Trails Association**



*Photo 1. Hugo GLO-Sub-Committee:  
Bob, Kelly, Jim, Rene, Mike, Joe, & Leta*

**IV RR NORTH 3 VANNOY DLC 2 (JAMES  
N. VANNOY 1857 DLC  
NO. 38)  
(IV-N3A) NORTH LINDSEY  
APPLEGATE PRAIRIE**

**Purpose** Members of the General Land Office (GLO) Field Review Sub-Committee (*GLO Sub-Committee*), Hugo Emigrant Trails Committee, to inventory and mark GLO point of interest (POI) site “North Lindsey Applegate Prairie IV-N3A” of the Applegate Trail (*Trail*). IV-N3A is part of the Fort Vannoy Farms Applegate Trail Project (Aerial Photo 1) which is to research, locate, and mark trail sites IV-N1A - IV-N4A, the 1855 Vannoy house and barn, and the 1846 ford on north side of the Rogue River.

**Participants** There were five participants from the *GLO SubCommittee*: Jim and Rene Ford, Joe Neiderheiser, Kelly Rarey, and Mike Walker. Other participants were Leta Neiderheiser, member, Hugo Emigrant Trails Committee, and land owner



Photo 2. Parking At Rural Metro

Bob Crouse, Fort Vannoy Farms, Inc. (Photo1; Appendix A).

**Accomplishments** Field trip to IV-N3A area. Members of the *GLO Sub-Committee* were not able to locate the monument to conduct bearing and range measurement. IV-N3A was not located. Additional office work will be scheduled and another field trip will be required to locate and mark IV-N3A.

**I. ROGUE RIVER VANNOY FERRY CROSSING SURVEY (IV-N1A) FACTS**

The private property stakeholder is Fort Vannoy Farms, Inc. Permission to locate IV-N3A on the private property was secured by Bob Crouse, Fort Vannoy Farms, Inc.

Bob & Barbara Crouse  
 Fort Vannoy Farms, Inc.  
 5630 Upper River Road  
 Grants Pass, Oregon 97526  
 541-660-5630  
 Email: bob@fortvannoyfarms.com  
 Web: www.fortvannoyfarms.com  
 27.22 Acre (EF) Tax Lot 602, Section 16, T.36S., R.6W., W.M.



Photo 3. Walking to 3 Monument Cluster From Rural Metro Parking

James Vannoy Donation Land Claim No. 38 Survey Notes:

<u>Chains</u>	East on the north boundary of C 38
<b>15.50</b>	<b>Trail from Vannoys to Ft. Leland</b> [15.5 chains = 1,023']
20.00	Set a post for the N.E. corner [20 chains = 1,320']

Latitude & Longitude POI Calculated

42" 26' 47.1"	North Latitude	Jim Ford: May 18, 2011 & May 26, 2011
123" 24' 53.1"	West Longitude	
42" 26' 47.0"	North Latitude	Joe Neiderheiser: May 26, 2011
123" 24' 53.0"	West Longitude	
42" 26' 47.1"	North Latitude	Kelly Rarey: May 26, 2011
123" 24' 53.0"	West Longitude	
42" 26' 47.2"	North Latitude	Mike Walker: May 18, 2011 & May 26, 2011
123" 24' 53.0"	West Longitude	

The four calculated latitudes had a range of .2 seconds ( $47.1'' + 47.0'' + 47.1'' + 47.2'' = 188.4/4 = 47.1''$ ). The four longitudes had a range of .1 seconds ( $53.1'' + 53.0'' + 53.0'' + 53.0'' = 212.1/4 = 53.025''$ ).



*Photo 4. Bob & Joe, Metal Detection Work At 3 Monument Cluster*

**GPS Work. The average latitude and Longitude Calculated For North Lindsey Applegate Prairie (IV-N3A) follows.**

42" 26' 47.1"	North Latitude
123" 24' 53.0"	West Longitude

One Second of Latitude	=	101' (feet)
One Second of Longitude	=	75' (feet)

**County Survey Office Work For Field Work Task 7 - Located IV-N3A with C.S.**

The GLO Field Review SubCommittee could never find a C.S. that specifically located the

north boundary of the James N. Vannoy 1857 DLC No. 38 (Map 1). It used the following steps to plot IV-N3A on C.S. 76 - 59.

**Step 1. Plot bearing and distance between IV-N3A and IV-N4A on the 1996 USGS Wilderville 7.5' Quad.**

- Bearing 195.5" from IV-N4A to IV-N3A, distance 600' Jim Ford
- Bearing 194.6" from IV-N4A to IV-N3A, distance 600' Joe Neiderheiser
- Bearing 195.5" from IV-N4A to IV-N3A, distance 600' Kelly Rarey
- Bearing 195.5" from IV-N4A to IV-N3A, distance 600' Mike Walker
- Average  $(195.5'' + 194.6'' + 195.5'' + 195.5'') = 781.1/4 = 195.275''$  at 600'

Average Bearing and Distance from IV-N4A to IV-N3A on the 1996 USGS Wilderville 7.5' Quad: 195.3" & 600'

**Step 2. Plot 195.3" & 600' from IV-N4A to IV-N3A on C.S. 76 - 59 = IV-N3A.**

**Step 3A. Plot bearing and distance from "Eastern Most Monument" of three monument cluster south of Upper River Road to IV-N3A as plotted on C.S. 76 - 59 (Map 2; protractor is aligned with line between eastern most monument and monument to west).**



*Photo 5. Looking East From 3 Monument Cluster Area; Upper River Road; Fort Vannoy Elementary School In Left Photo North of Road*

Bearing 147.5" from eastern most monument to IV-N3A, distance 237' Jim Ford  
 Bearing 147.5" from eastern most monument to IV-N3A, distance 237' Joe Neiderheiser  
 Bearing 147.8" from eastern most monument to IV-N3A, distance 238' Kelly Rarey  
 Bearing 147.0" from eastern most monument to IV-N3A, distance 237' Mike Walker  
 Average  $(147.5" + 147.5" + 147.8" + 147.0" = 589.8/4 = 147.45")$  at  $(237' + 237' + 238' + 237' = 949/4 = 237.25)'$

Average bearing and distance from "Eastern Monument" to IV-N3A: 147.5" & 237'

There are multiple trails of the Applegate Trail as it evolved out of the mud and in response to ferries being developed (Appendix B).

## II. BEARING & DISTANCE WORK IN FIELD

Members of the GLO Subcommittee parked their vehicles in the Rural Metro Fire Department's parking area at Upper River Road and walked to the three monument cluster (Photos 2 - 3).



*Photo 6. Leta, Rene, ??, ??, & Jim Fort Vannoy School In Background*

The GLO Subcommittee used a metal detector to try and find the Eastern Monument. Members measured the distance from found "County ROW Monument" (Map 2) to the Eastern Monument. However, even with a metal detector the GLO Subcommittee could not find any of the monuments in the three monument cluster (Map 2; Photos 4 - 8). Therefore, no bearing and distance work was accomplished. The GLO Subcommittee needs to have an office workshop to measure bearing and distance from the found "County ROW Monument" to NV-3NA.



*Photo 7. Bob Digging Metal Hit For Possible Monument; Joe With Metal Detector*

## III. GLOBAL POSITION SYSTEM (GPS) WORK IN FIELD

The bearing and distance between IV-N3A and IV-N4A was plotted on the 1996 USGS Wilderville 7.5' Quad (large scale/small area). This scale was not as reliable as having a C.S. with the north DLC line identified and IV-N3A plotted. The GPS readings to NV-N3A could have been used alone, but their reliability was estimated to be between 20' - 50'. GPS readings were not made; they will be made to check the bearing and distance method from the County ROW Monument.

## V. FIELD TRIP ACCOMPLISHMENTS

Members of the *GLO Sub-Committee* were not able to locate the Eastern Monument which had bearing and distance calculated to NV-N3S to conduct bearing and range measurement. IV-N3A was not located. Additional office work will be scheduled and another field trip will be required to locate and mark IV-N3A.

## IV. TRAIL CLASSIFICATION

There was a consensus determination by members of the *GLO SubCommittee* that the *Trail* at IV-N3A had a OCTA trail classification of Class ④ Verified Altered Trail (Appendix C).

Class 1 - Unaltered Trail. It retains its original character.

Class 2 - Used Trail. It retains elements of its original character, but shows use by motor vehicles.

Class 3 - Verified Trail. It is accurately located and verified, but trail traces are nonexistent or insignificant.

Class 4 - Altered Trail. It is verified, but elements of its original condition are permanently altered.

Class 5 - Approximate Trail. It is obliterated or unverifiable that its location is known only approximately.

**OCTA Trail Classification** Class ④  
Verified Altered Trail.

**Coherence Rule** Linear Uniformity. Yes

**Corroborative Rule** Confirming Evidence. Yes

**Collateral Rule** Physical/Topo Evidence. No

**Correlation Rule** Overall Agreement. Yes

## V. BE RESPECTFUL

*Do not trespass. IV-N3A is located on private property not open to the public.*

## VI. MINUTES

Minutes recorded by Mike Walker: June 27, 2011.

Mike Walker, Minutes Secretary & Member  
GLO Field Sub-Committee  
Hugo Emigrant Trails Committee  
Hugo Neighborhood Association & Historical Society  
3388B Merlin Rd #195  
Grants Pass, Oregon 97526  
541-471-8271  
Email: hugo@jeffnet.org  
Web Page: <http://www.hugoneighborhood.org/>



*Photo 8. Crew (Bob, Joe, Leta, ??, & Rene Still Looking For Monuments, No Luck*

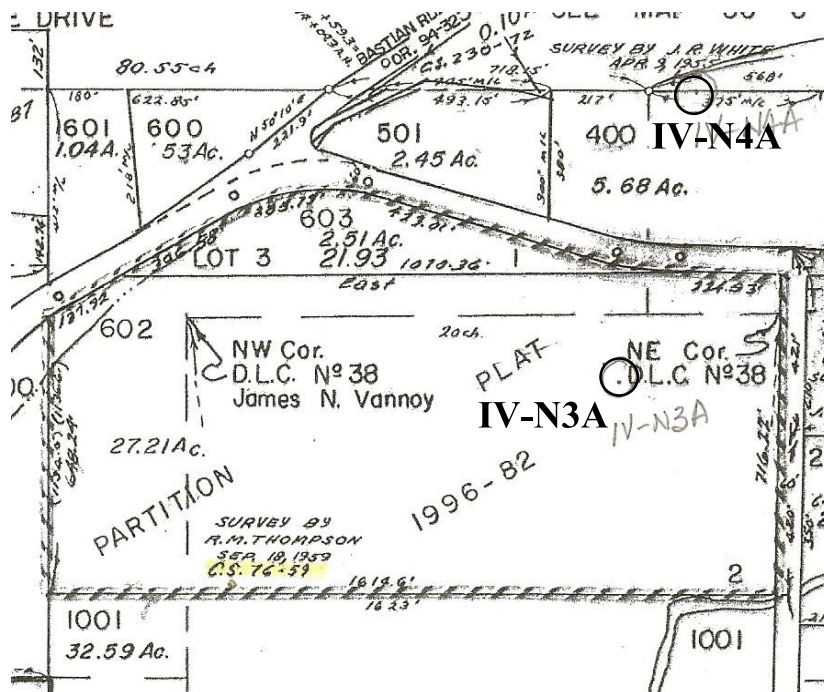
Minutes were reviewed and edited by the following participating members of the *GLO SubCommittee*: Joe Neiderheiser, Kelly Rarey, and Mike Walker. Minutes were approved by the participating members of the *GLO SubCommittee*: Jim and Rene Ford, Joe Neiderheiser, Kelly Rarey, and Mike Walker, and Bob Crouse, Fort Vannoy Farms sponsor.

Email Copies of Final Minutes: Participants of field trip; members of GLO Field Sub-Committee; Private property owner Patricia A. O'Hara Lechuga; Bob Crouse, Fort Vannoy Farms, Inc.; Karen Rose, Co-Project Leader, Hugo Emigrant Trails Committee; Jean Boling, Historic Sites Chair, Josephine County Historical Society; and Henry Pittock, Mapping and Marking Chair, NW OCTA.

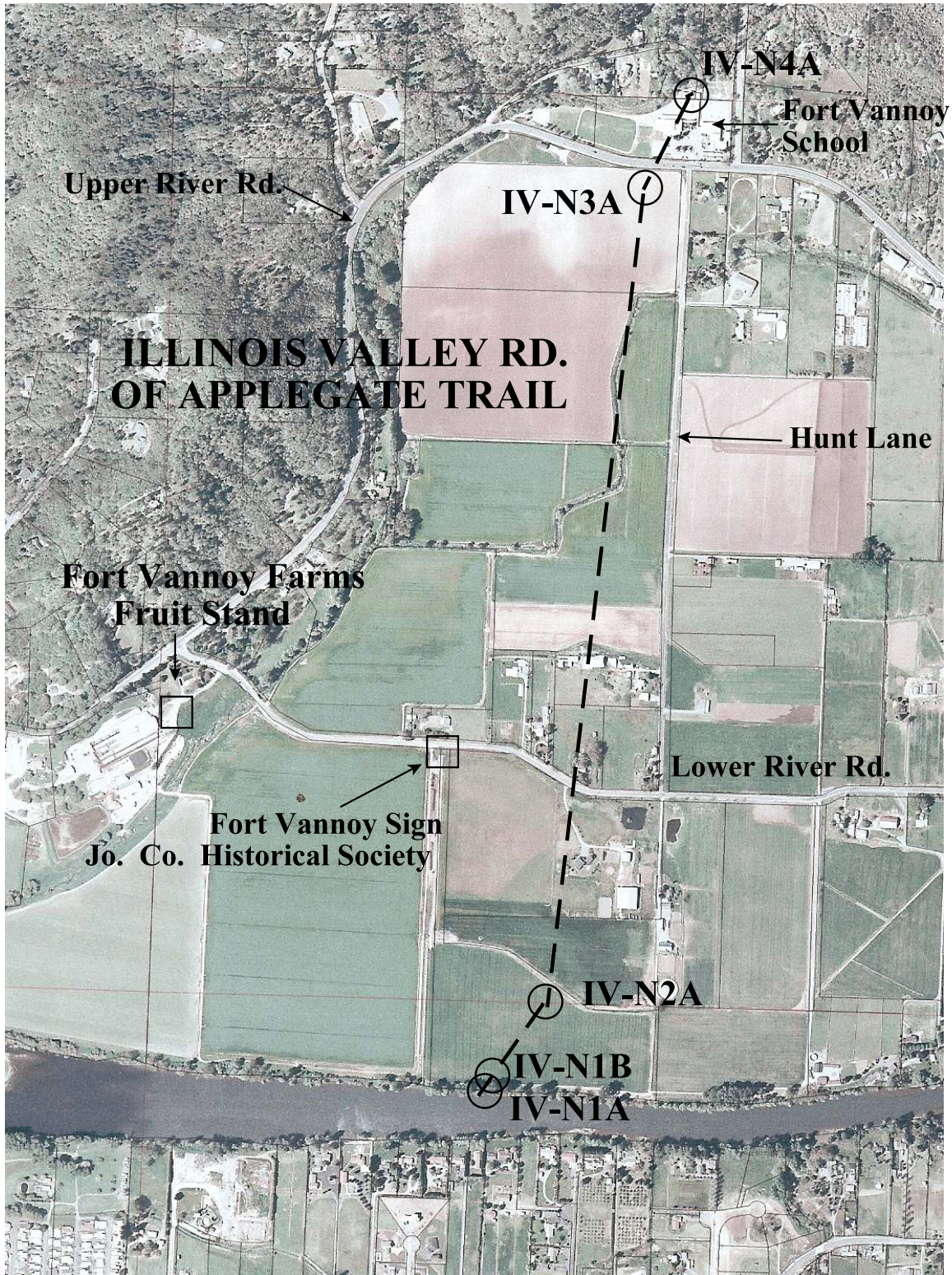
The final minutes are public and can be shared as the recipients determine desirable.

## References

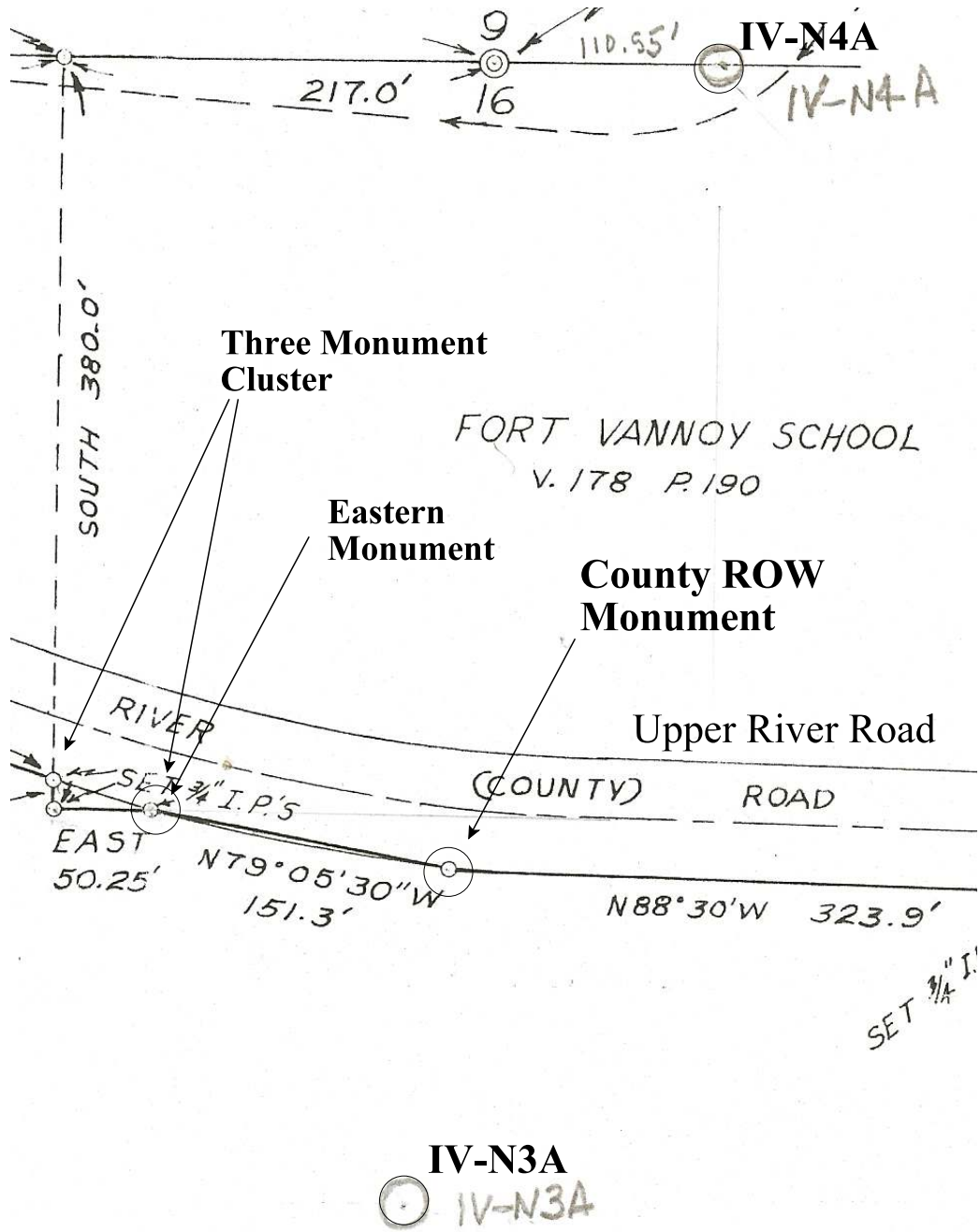
- Web Survey Notes: <http://www.blm.gov/or/landrecords/survey/ySrvy2b.php?1741741000000>
- Web Survey Notes: [http://www.hugoneighborhood.org/Rogue\\_River\\_Vannoy\\_Ferry\\_Crossing\\_IV\\_N1A.htm](http://www.hugoneighborhood.org/Rogue_River_Vannoy_Ferry_Crossing_IV_N1A.htm)
- Web Map: [http://www.hugoneighborhood.org/T.36S\\_R.6W\\_W.M.\\_DLC\\_map.htm](http://www.hugoneighborhood.org/T.36S_R.6W_W.M._DLC_map.htm)
- Oregon GLO 1855 Map: T.36S\_R.6W\_W.M.
- USGS 1996 Wilderville 7.5' Quad
- 2002 Aerial Photo
- Josephine County 2011 Assessor Map: Section 16, T.36S\_R.6W\_W.M.
- County Survey: 76 - 59
- IV Of Applegate Trail: Fort Vannoy Farms (IV-N2A) Brochure



**Map 1. Illinois Valley Road of Applegate Trail Survey Sites  
Plotted on 2011 Josephine County Assessor Map**



*Aerial Photo 1. Fort Vannoy Farms Applegate Trail Project*



**Map 2. North Lindsey Applegate Prairie IV-N3A On C.S. 76-59**  
**Bearing & Distance From County ROW Monument: ??' & ??'**



## Appendix A. Participants: GLO Field Review SubCommittee Members

Jim Ford, Member (1-3)  
GLO Field Sub-Committee  
Hugo Emigrant Trails Committee  
P.O. Box 81  
Merlin, OR 97532  
541-471-1235

Rene Ford, Member (1-3)  
GLO Field Sub-Committee  
Hugo Emigrant Trails Committee  
P.O. Box 81  
Merlin, OR 97532  
541-471-1235

Joe Neiderheiser Member (1-3)  
GLO Field Sub-Committee  
Hugo Emigrant Trails Committee  
279 Ridgefield Road  
Grants Pass, OR 97527  
541-862-9077  
Cell 450-2020

Kelly Rarey, Member (1-3)  
GLO Field Sub-Committee  
Hugo Emigrant Trails Committee  
275 Canyon Oak Drive  
Grants Pass, Oregon 97526  
541-471-0859

Mike Walker, Member (1-3)  
GLO Field Sub-Committee  
Hugo Emigrant Trails Committee  
3388B Merlin Rd #195  
Grants Pass, Oregon 97526  
541-471-8271

\*\*\*\*\*

Others

Bob Crouse  
Fort Vannoy Farms, Inc.  
5791 Lower River Rd.  
Grants Pass, OR 97526  
541-660-5630  
Email: bob@fortvannoyfarms.com  
Web: www.fortvannoyfarms.com

Leta Neiderheiser, Member (1-3)  
Hugo Emigrant Trails Committee  
279 Ridgefield Road  
Grants Pass, OR 97527  
541-862-9077

1 - Member of HNA&HS  
2 - Member of JCHS  
3 - Member of NWOCTA

**Appendix B. Multiple Trails As Applegate Trail Evolves Out Of The Mud** (Hugo Emigrant Trails Committee, Hugo Neighborhood Association & Historical Society, & Josephine County Historical Society. August 28, 2010. *Applegate Trail Evolves Out Of The Mud: After 1855 - 1856*. Very Draft For Review & Editing. Brochure 4F of Applegate Trail GLO Surveys Brochure Series. Hugo, OR)

Western Oregon's first roads were the paths which the Indians made and traveled. After the trappers arrived many of the old paths were widened, first for the whites man's pack trains, and then for emigrant wagons.

The Rogue Valley was hostile to pioneers prior to the Native American removal in 1856 to distant reservations. This meant that, except for anomalies like the 1849 - 1850 gold rush to California, the 1851 discovery of gold around Jacksonville, and the first donation land claimers, almost all traffic on the *Trail* in the Hugo region was one-way north to the Willamette Valley. These emigrants were not building or improving roads. Where necessary they were cutting a trail through the wilderness to get beyond, and they did not intend to come back.

During the development of DLCs from 1850 through 1855 white settlers began to arrive in the Rogue Valley especially on the larger better bottom lands in what would become Jackson County.

Except for the 1853 Military Road at Mt. Sexton most roads in the Hugo region were not so much built as simply cleared and used from 1846 through 1856.

Wagon roads after 1856 remained simple with a little digging on the sides of hills as the road locations moved away from the winter bottom lands that had been dry and relatively open during the one-way 1846 - 1856 migrations north. Where side hills in the area permitted it these roads were a little higher than the surrounding bottom lands with draining occurring when it rained.

Even then wagons in the country often meant struggling through deep ruts or, in wet weather, through rivers of mud.

The following historical and present roads are known areas in the Hugo region where the wagon roads of the *Trail* evolved away from the bottom lands which turned into a quagmire of axle-deep mud during the winter toward the toes of slopes/hills.

#### Jacksonville Road of *Trail*

- Donaldson Road West of GLO *Trail* Sites At JA-1 to JA-2
- East of *Trail* Sites At JA-4 to JA-5 to Gun Club Road/Highland Avenue At Harris Creek
- East & West of 1855 GLO *Trail* Site At JA-8 & Schoolhouse Creek
- West to Monument Drive At Schoolhouse Creek
- East of 1855 GLO *Trail* Site At JA-10A To Niday DLC Survey JA-10B
- East of Monterico Drive At JA-10C
- Hugo Road East of Upper Bannister Creek & *Trail*
- 1853 Military Road West of Maple Creek & *Trail*
- Sunny Valley Loop Road East of *Trail* at JA-17B & JA-17C

#### Illinois Valley Road of Applegate Trail

- West of Bannister Creek & *Trail* At IV-5 and IV-6
- Oxyoke Road West of Bannister Creek & *Trail* At IV-7 and IV-8

1846	Rogue River Vannoy Creek Ford (left or south bank)
1846	Rogue River Vannoy Creek Ford (right or north bank)
1855	Vannoy Farm Site IV-N2A
1855	Fort Vannoy School Site IV-N4A
1857	Rogue River Vannoy Ferry Crossing IV-N1A
1857	North Lindsey Applegate Prairie Site IV-N3A
18??	Road Petition (future research at Josephine County Surveyor's Office)

The 1855 and 1857 Illinois Valley Road sites of the Applegate Trail are just one of the many evolutions of the Trail. The Trail locations depicted on the aerial photographs and maps are approximations between the surveyed Trail sites.

## Appendix C. OCTA's *Cardinal Rules of Applegate Trail Verification: 1855 "North Lindsey Applegate Prairie IV-N3A"*

Yes - Coherence Rule Linear Uniformity/Systematic Connection. There must be a linear uniformity so that trail segments form a continuous sequence; i.e., the trail segment under investigation has to link coherently with the trail segments that precede and follow it. The 1857 donation land claim (DLC) surveyed point North Lindsey Applegate Prairie IV-N3A has reliable linear uniformity.

- Six linear orientation of point of interests (POIs) are within one mile of each other. The following are the GLO and DLC, and other POIs.

- POI 1846 Rogue River Vannoy Creek Ford (left or south bank)
- POI 1846 Rogue River Vannoy Creek Ford (right or north bank)
- POI 1855 Vannoy Farm Site IV-N2A (GLO survey)
- POI 1855 Fort Vannoy School Site IV-N4A (GLO survey)
- POI 1857 Rogue River Vannoy Ferry Crossing IV-N1A (DLC survey)
- POI 1857 North Lindsey Applegate Prairie Site IV-N3A (DLC survey)

- 1895 Office Map of Josephine County

Yes - Corroborative Rule Confirming Evidence. To support with evidence or authority. There must be confirming documentary evidence of the trail; i.e., the trail segment under investigation has to have valid written or cartographic evidence to support its authenticity. IV-N3A has reliable DLC survey notes.

- 1857 DLC survey notes and map locating IV-N3A.

No - Collateral Rule Physical/Topo Evidence. There must be accompanying physical and/or topographical evidence of a trail; i.e., the trail segment under investigation has to have some geomorphic or artifact evidence to support it as an authentic emigrant trail. IV-N3A has no physical traces visible within 30 meters of site, but has five POIs within one mile of *Trail* site.

Yes - Correlation Rule Overall Agreement/Correlate. There must be overall agreement between all types of evidence; i.e., the evidence resulting from the first three cardinal rules have to be mutually supporting (not contradicting one another) in order to verify the location of a trail segment.

**Conclusion** OCTA Trail Classification is Class ④ Verified Altered Trail.

**Coherence Rule** Linear Uniformity. Yes

**Corroborative Rule** Confirming Evidence. Yes

**Collateral Rule** Physical/Topo Evidence. No

**Correlation Rule** Overall Agreement. Yes