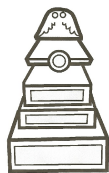


Minutes of Field Trip to Neely & Trimble Gravesites



Hugo Graves Team Hugo Neighborhood Association & Historical Society Inventory Field Trip, Wednesday, August 27, 2014 10:00 a.m. - Noon



I. REFERENCES

1. Hugo Cemeteries
hugoneighborhood.org/cemeteries.htm
2. Hugo Home Graves
hugoneighborhood.org/hugohomegraves.htm
3. Neely & Trimble Historic Cemeteries Plan Outline
hugoneighborhood.org/hugohomegraves.htm



Photo 1. Neely Gravesites

II. PURPOSE

Hugo Graves Team's (HGT) purpose for a field trip to Neely & Trimble gravesites was to familiarize members with the gravesites and for the HGT to consider a proposal to develop site specific cemetery plans for the pioneer Neely and Trimble gravesites. It is highly probable that the gravesites are located in physical proximity to the Applegate Trail.

III. LOCATION

The location of the field trip was the Neely and Trimble Gravesites along Schoolhouse Creek Road.

IV. PARTICIPANTS



Photo 2. August 27, 2014 Graves Tour

One short of a dozen participants attended the field tour.

- . HGT Members: Ms. Bryan; Jean Boling lives in Idaho and was unable to participate; Liz Butowitsch; Wayne McKy, and Mike Walker.
- . Hugo Emigrant Trail Members: Rene & Jim Ford, Kelly Rarey, & Mike Walker.
- . Pleasant Valley Cemetery Association: Fred Sharp, President
- . Neighbors: Karen Rose, HNAHS; Janet McKy, HNAHS; Rich Burket, Schoolhouse Creek Road Neighbor

V. ACCOMPLISHMENTS

A. Participants' Field Tour of the Gravesites was conducted, including a short detour to the entrance of the Pleasant Valley cemetery to inspect the 1/4 corner monument which is the beginning point in many of the applicable cemetery and associated deeds (see N&TG Map 5. Neely & Trimble Gravesites).

B. Hugo Graves Team (HGT) Approved Developing Cemetery Plans On August 22, 2014 Ms. Bryan and Mike Walker, members HGT, made a recommendation to the HGT to develop site specific cemetery plans for the Neely and Trimble gravesites.

On August 27, 2014 the Hugo Graves Team conducted a field tour of the Neely and Trimble grave sites. One of the agenda items was a discussion regarding the recommendation for the HGT to development site specific cemetery plans for the Neely and Trimble grave sites. At the end of the information tour the HGT voted to develop the cemetery plans. Roles of HGT members follow. These roles could be supplemented as the planning process needs issues, concerns, and needs are developed.

- . Ms. Bryan, HGT Member & Neely and Trimble Cemeteries Plans Coordinator
- . Jean Boling, HGT Member, Cemetery Crawler (Cemeteries Expert), & Grants Advisor
- . Liz Butowitsch, HGT Member & Outreach
- . Wayne McKy, HGT Member & Outreach
- . Mike Walker, HGT Member & Standards & Criteria Lead & Web Publisher



Photo 3. August 27, 2014 Graves Tour

Ms. Bryan, Cemeteries Plans Coordinator
Hugo Graves Team
Hugo Neighborhood Association & Historical Society
P.O. Box 4
Merlin, OR 97532
541-291-3841
Email: jocohistory@charter.net
Web Page:
hugoneighborhood.org/hugohomegraves.htm

Additional HGT roles accepted since the field trip follow.

- . Ms. Bryan, Primary contact with Oregon Commission on Historic Cemeteries; and SHPO State Archaeologist, Oregon Heritage Services.
- . Liz Butowitsch, Primary contact with Josephine County Planning Office.
- . Mike Walker, Primary contact with Josephine County Public Works.

It is assumed that “implementation” of the cemetery plan(s), after development by the HGT, would be followed through by a yet to be formed Historic Neely & Trimble Gravesites Team.

C. Background Information Received During Field Tour

1. Improve Schoolhouse Creek Road to County Standards Fred Sharp, President Pleasant Valley Cemetery Association, provided a general background to Don Marvin's proposal to improve Schoolhouse Creek Road to county standards.

1a) Land Use Application Don Marvin is a neighbor who lives along Schoolhouse Creek Road. According to Fred the road proposal is an official land use application with the Josephine County Planning Department. The proposal would include relocation of all or some of the Neely and Trimble graves to make room for the improved road.

1a) Land Use Application Action Item: Need to research land use application for the purpose of understanding land use application. Visit the Josephine County Planning Office.

1b) Road Improvement Alternatives Several road improvement alternatives had been discussed over the last ca., three years.

1b) Land Use Application Action Item: Participants need to provide details of road improvement alternatives.



Photo 4. August 27, 2014 Graves Tour

2. Opinion of Neighbors Fred Sharp, President Pleasant Valley Cemetery Association (PVCA), was interested in the opinion of neighbors to the proposal to improve Schoolhouse Creek Road to county standards, including the potential impacts to the gravesites.

2a) Opinion of Neighbors It turned out that Mike Walker, Education Chair, HuNAHS, was also interested in the opinion of neighbors. He had been considering whether the HuNAHS wanted to develop an opinion survey. Mike proposed to the HGT and Sharp that the HuNAHS and PVCA co-sponsor a opinion survey of neighbors. The HGT approved the proposal to develop an opinion survey of neighbors (Mike Walker Lead for HuNAHS). Walker's tentative view was that he would develop a one-page non-random survey and web publish it for consideration by interested folks to respond. This minimum outreach word of mouth approach could be supplemented depending on the interest and desired of other volunteers. The PVC Association was invited to be co-sponsors.

2b) Opinion of Neighbors Action Item: Fred Sharp will take the HuNAHS's proposal to the Board of the PVC for a decision.

3. Early Deeds of PVC: Fred Sharp, President PVCA, has early deeds of PVC he will share with group.

4. Trimble Gravesites Part of PVC? Fred Sharp, President PVCA, believes that the Trimbles thought the Trimble gravesites were part of the PVC.

4a) Trimble Gravesites Part of PVC? Action Item: Fred Sharp will provide this information to the group.

5. Surveys: Some of the early deeds' survey descriptions of the Neely and Trimble gravesites' tax lots do not appear to match the ground as measured by the 1/4 corner monument (i.e., beginning point in many of the applicable cemetery and associated deeds) in the Monument Drive right-of-way at the entrance to Pleasant Valley Cemetery.

5a) Surveys Action Item: Check latest surveys in Josephine County Surveyor's Office.

5b) Surveys Action Item: Enquire with GLO Field Survey Subcommittee, Hugo Emigrant Trails Committee, to see if it would check a couple of deeds with the ground (Kelly Rarey & Mike Walker?).

VI MINUTES

These September 4, 2014 minutes for the August 27, 2014 field trip were developed by the participants and recorded by Mike Walker.

Mike Walker, Member
Hugo Graves Team
Hugo Neighborhood Association & Historical Society
P.O. Box 1318
Merlin, Oregon 97532
541-471-8271
Email: hugo@jeffnet.org
Web Page: hugoneighborhood.org

Hugo Home Graves
Web Page: hugoneighborhood.org/hugohomegraves.htm

Maps

N&TG Map 5. Neely & Trimble Gravesites

Photos

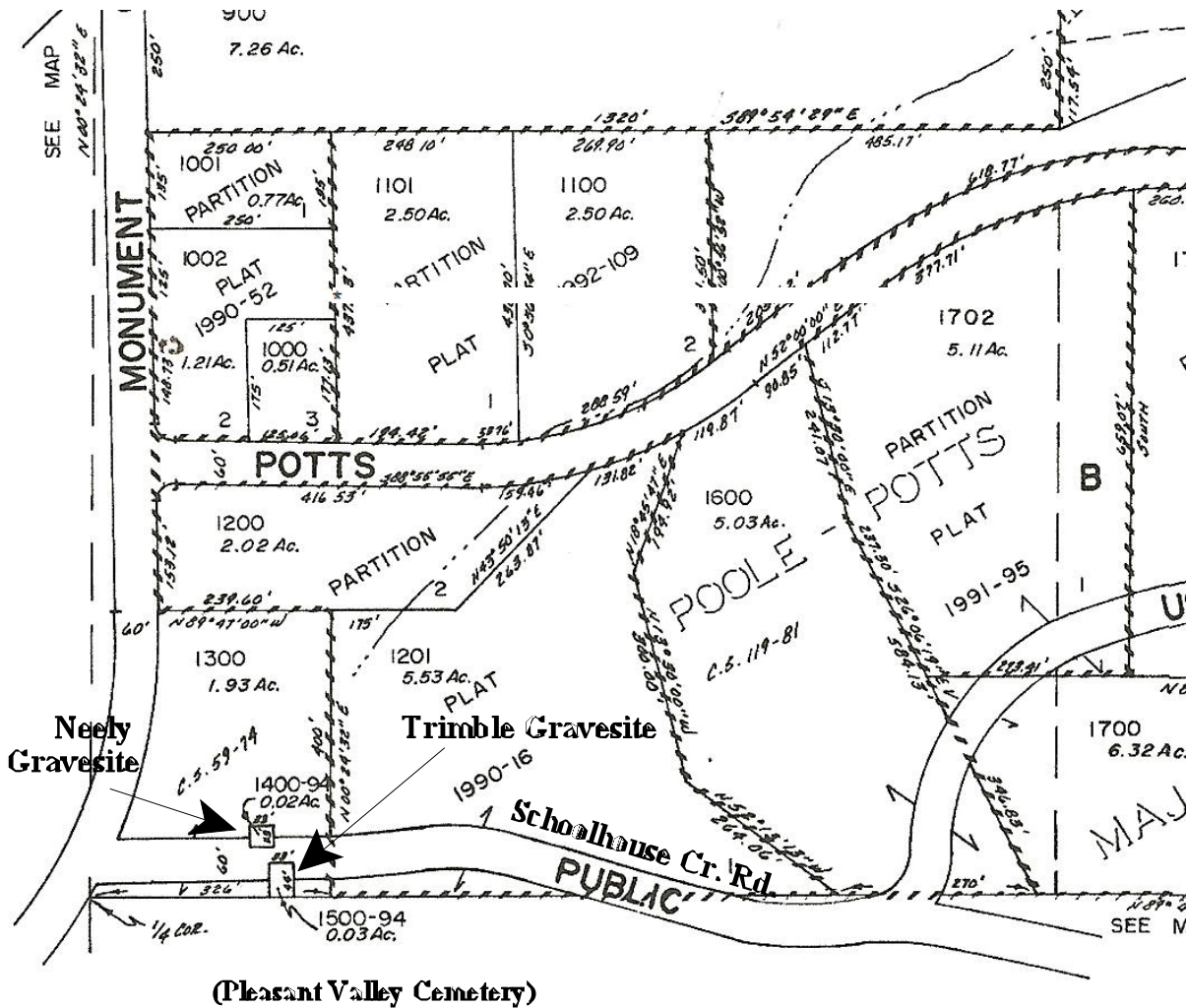
Photo 1. Neely Gravesites
Photo 2. August 27, 2014 Graves Tour
Photo 3. August 27, 2014 Graves Tour
Photo 4. August 27, 2014 Graves Tour

N&TG Map 5. Neely & Trimble Gravesites

Josephine County, Oregon Assessor Map:
NW 1/4, Section 11, T.35S., R.6W., WM

Hugo Graves Team
Hugo Neighborhood Association & Historical Society

August 25, 2014



Neely Gravesite: Tax Lot 1400-94, 0.02 Acres

Trimble Gravesite: Tax Lot 1500-94, 0.03 Acres

1/4 Corner is the "beginning point" in many of the applicable Neely & Trimble deeds' surveys