

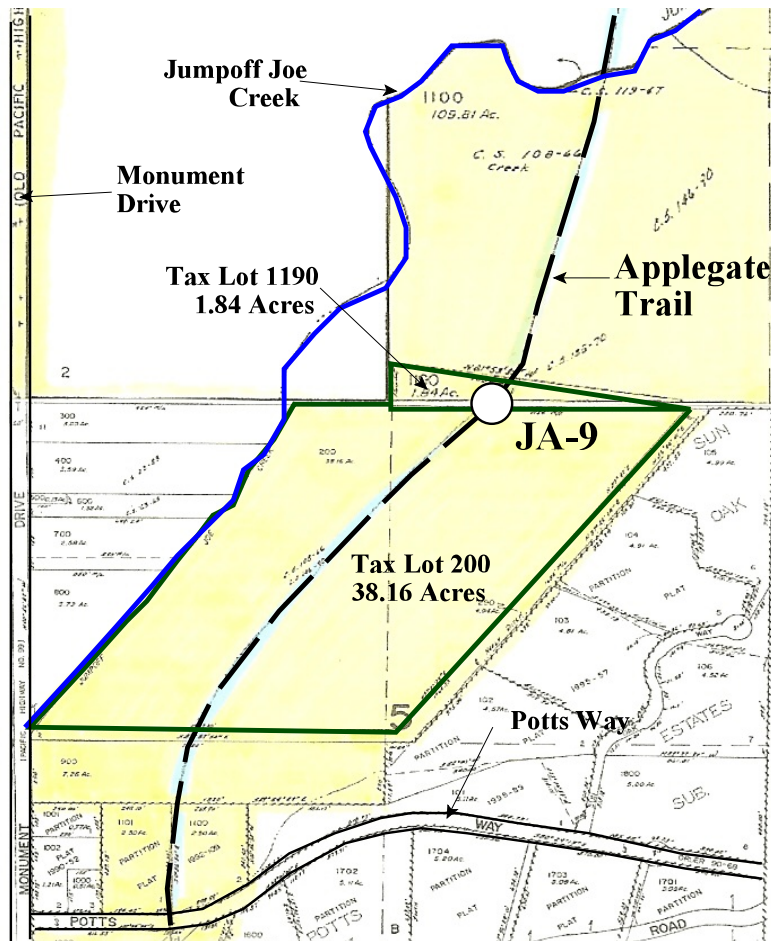
HGP Map 16. Applegate Trail Site Pleasant Valley JA-9¹ Tax Lot Relationships

(Josephine County, Oregon Assessor Base Map)

Hugo Graves Team
Hugo Neighborhood Association & Historical Society



August 26, 2014



JA-9 is located on the south boundary of the Walker donation land claim (DLC) and the northern boundary of the Abraham cash entry. The 1855 Wesley Walker DLC patent 699 was issued by President Andrew Johnson and became final March 1, 1855. The 160 acre 1865 Solomon Abraham Cash Entry was purchased by Solomon under Cash Entry No. 662 in Josephine County, Oregon. It was issued August 15, 1865 to Solomon Et. Al. Abraham (April 24, 1820: Sale-Cash Entry (3 Stat. 566)). This is the earliest cash entry sale in Hugo, except for the year before by Samuel Trimble. Both purchases were on the newly developed Applegate Trail.

Footnote 1. Hugo Emigrant Trails Committee, Hugo Neighborhood Association & Historical Society; Josephine County Historical Society. March 7, 2010. *JR Of Applegate Trail: Pleasant Valley (JA-9A)*. Brochure 13A of Applegate Trail GLO Surveys Brochure Series. Hugo, OR.