

# Hugo Neighborhood Association & Historical Society

P.O. Box 1318  
Merlin, Oregon 97532  
541-471-8271  
Email: [hugo@jeffnet.org](mailto:hugo@jeffnet.org)  
Web Page: <http://www.hugoneighborhood.org/>

September 6, 2014 Letter/Email

Rob Brandes, Director  
Josephine County Public Works Department  
201 River Heights Way  
Grants Pass, OR 97527  
541-474-5460



Email: [rbrandes@co.josephine.or.us](mailto:rbrandes@co.josephine.or.us)

Web Page: <http://www.co.josephine.or.us/SectionIndex.asp?SectionID=120>

Dear Rob:

James Black, Planner with the JO CO Planning Office (JCPO), informed us that approvals for road improvements to Schoolhouse Creek Road (SC Rd) are the responsibility of the JO CO Public Works Department (JCPWD), and he suggested we contact Nora Swartz. He also informed us that there had been a land use request (i.e., zone change) pending for several years for property along SC Rd that involved improvements to the road.

As background, three representatives of the Hugo Graves Team (HGT) spoke to Mr. Black on August 17, 2014. Our topics with James were a review of the JCPO's land use files for any pre-application or land use request involving property in the vicinity of SC Rd, or improvements to SC Rd. Another topic included any standards and criteria (i.e., JO CO Transportation System Plan (JCTSP); JO CO Comprehensive Plan (JCCP); JO CO Rural Land Development Code (RLDC); and/or other county ordinances) for SC Rd to meet county road standards potentially applicable to the Neely and/or Trimble Historic Cemeteries (Ref. 1; N&TG Map 5).

We request a meeting with you and/or your representative to discuss potential improvements to SC Rd and the applicable road standards and criteria because the HGT is developing a cemetery plan (Reference 2) for the Neely and Trimble Historic Cemeteries per the Oregon Commission on Historic Cemeteries' guidelines in the *Historic Cemetery Long Range Planning Workbook* (Reference 3). I am the primary contact with the JCPWD concerning this cemetery planning process (Appendix A). Ms. Bryan, Cemeteries Plans Coordinator, HGT, is my alternate contact.

The HGT views this communication as the beginning dialogue in our request for assistance in understanding applicable JO CO land use requests, laws, ordinances, and policy. Thank you for assisting us to understand the role of the JCPWD.

Sincerely,

/s/ Mike Walker

Mike Walker, Standards & Criteria Lead & Web Publisher  
Hugo Graves Team

## References:

- Reference 1. Neely and/or Trimble Gravesites: Historic Cemeteries Identified OR SHPO Table ([http://www.oregon.gov/oprd/HCD/OCHC/docs/Cemetery\\_List.pdf](http://www.oregon.gov/oprd/HCD/OCHC/docs/Cemetery_List.pdf))
- Reference 2. Neely & Trimble Historic Cemeteries Plan ([hugoneighborhood.org/hugohomegraves.htm](http://hugoneighborhood.org/hugohomegraves.htm))
- Reference 3. *Historic Cemetery Long Range Planning Workbook* (<http://www.oregon.gov/oprd/HCD/OCHC/docs/cemeteryplanningworkbooka.pdf>)

## Appendices

- Appendix A. Hugo Graves Team Contacts with Josephine County Public Works Department

## Maps

- N&TG Map 5. Neely & Trimble Gravesites

## Email copies:

- . Hugo Graves Team, Hugo Neighborhood Association & Historical Society

## Appendix A. Hugo Graves Team Contacts with Josephine County Public Works Department

The Hugo Graves Team (HGT) is developing a cemetery plan for the Neely and Trimble Historic Cemeteries per the guidelines in the *Historic Cemetery Long Range Planning Workbook*. Mike Walker is the HGT's primary contact with the JCPWD. Ms. Bryan, Cemeteries Plans Coordinator, HGT, is the alternate HGT contact.

Mike Walker, Standards & Criteria Lead & Web Publisher  
Hugo Graves Team  
Hugo Neighborhood Association & Historical Society  
P.O. Box 1318  
Merlin, Oregon 97532  
541-471-8271  
Email: [hugo@jeffnet.org](mailto:hugo@jeffnet.org)  
Web Page: [hugoneighborhood.org/hugohomegraves.htm](http://hugoneighborhood.org/hugohomegraves.htm)

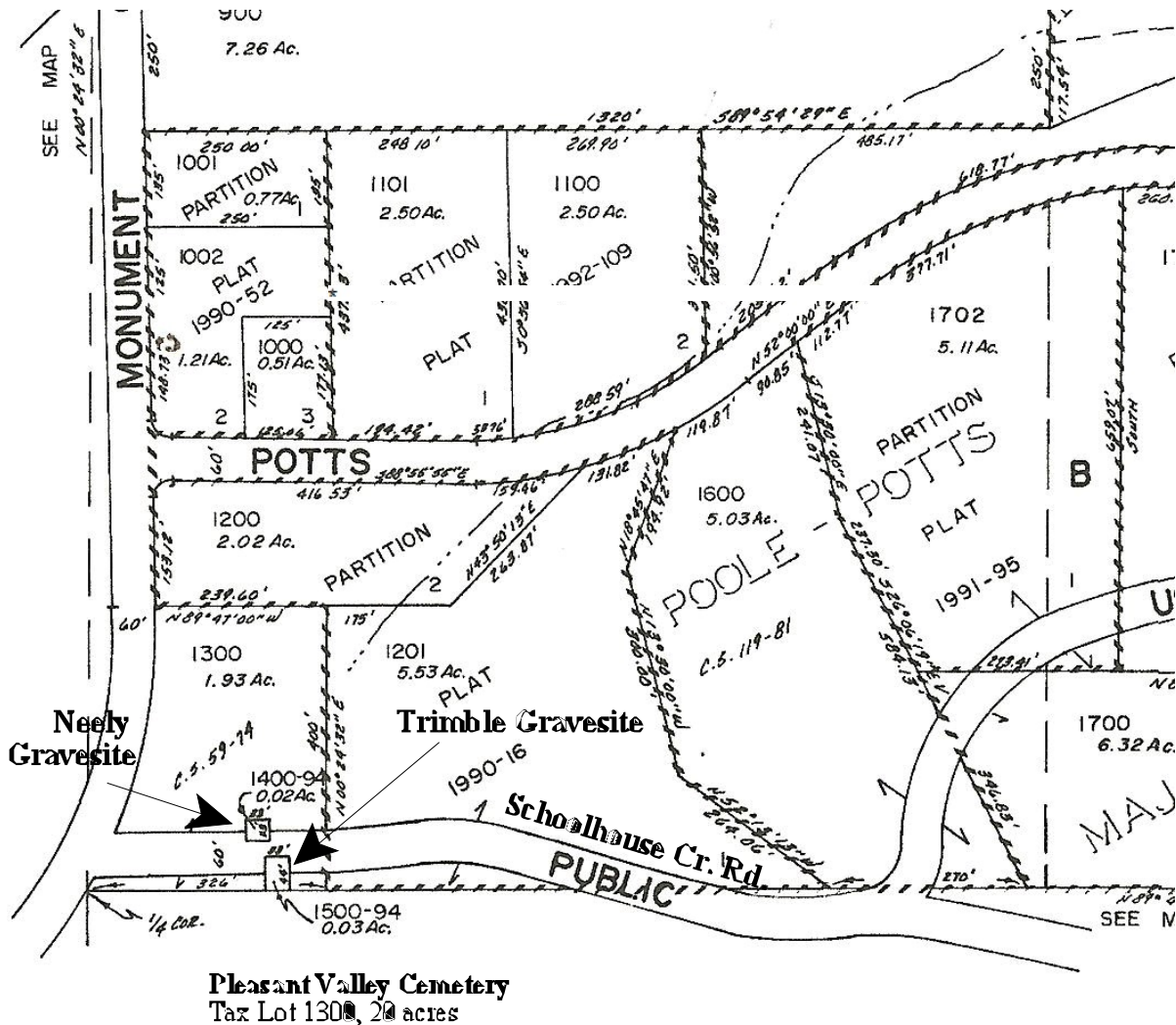
Ms. Bryan, Cemeteries Plans Coordinator  
Hugo Graves Team  
Hugo Neighborhood Association & Historical Society  
P.O. Box 4  
Merlin, OR 97532  
541-291-3841  
Email: [jocohistory@charter.net](mailto:jocohistory@charter.net)  
Web Page: [hugoneighborhood.org/hugohomegraves.htm](http://hugoneighborhood.org/hugohomegraves.htm)

# N&TG Map 5. Neely & Trimble Gravesites

Josephine County, Oregon Assessor Map:  
NW 1/4, Section 11, T.35S., R.6W., WM

Hugo Graves Team  
Hugo Neighborhood Association & Historical Society

August 25, 2014



Neely Gravesite: Tax Lot 1400-94, 0.02 Acres

Trimble Gravesite: Tax Lot 1500-94, 0.03 Acres

Pleasant Valley Cemetery: Tax Lot 1300, 20.00 Acres

1/4 Corner is the "beginning point" in many of the applicable Neely & Trimble deeds' surveys