

## Trimble Pioneers

**Trimbles** The Trimbles were an early pioneer family to northern Josephine County, Oregon.

**1870** “. . . and in 1870 [The Trimbles] came to Josephine County. Two months after their arrival Mr. Trimble died, leaving a wife and 12 children, one boy being adopted.”<sup>1</sup> Robert probably died on the family’s Turner-Benson Military Warrant. Clementina’s son-in-law, Garrett Crockett, represented her in dealing with the estate of her husband starting April 30, 1870.

**1866 Railroad Grant** Congress enacted legislation in 1866 authorizing a grant of public domain lands to help finance construction of a railroad from Portland, Oregon to the California border.<sup>2-3</sup>

**1883** In 1883 the railroad was developed through the Jump-Off-Joe Creek drainage, including the PVC area, and the land grants were withdrawn from federal administration as fast as the railroad was developed.<sup>4</sup>

**1896 O & C Railroad Patent** On March 17, 1896 the O & C Railroad Company was issued a railroad grant Patent No. 38 for 109,827.83 acres.<sup>2-3</sup> It would sell/grant to the PVC Association (PVCA) 40 acres of that patent three years later.

**Hypothesis** The O&C Railroad had control of the 40 acres that became the PVC in 1896 since 1883.<sup>2-3</sup> It was using the 40 acres as a cemetery since 1883.

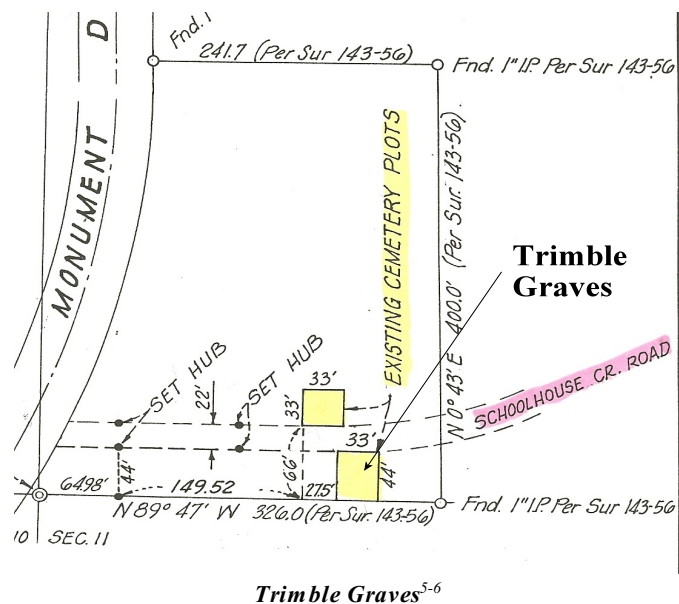


Henry

## Trimble’s Family Private Grave Plot

**Trimble Family** Two members of the Trimble family died between 1870 and 1882.

Robert Trimble	1870
Henry Trimble	1881
Elmer Trimble	1884
Medissia [Trimble] Rowe	1887
Clementina Trimble	1903



Trimble Graves<sup>5-6</sup>

- Hugo Neighborhood & Josephine County Historical Society. 2007. (Crocketts: Hugo Pioneers; Trimbles: Hugo Pioneers; Trimbles: Josephine County Census; Trimbles: Military Warrant; Eurydice Trimble Crockett: Hugo Pioneer). Hugo, OR.
- Hugo Neighborhood, Josephine County Historical Society, & Rogue Advocates. 2007. *O & C Railroad*. Hugo, OR.
- Hugo Neighborhood, Josephine County Historical Society, & Rogue Advocates. 2007. *Applegate Trail & Pleasant Valley Cemetery*. Hugo, OR.
- Democratic Times, Jacksonville, August 31, 1883, page 3

## Pleasant Valley Cemetery (PVC)

**Private Platted Family Grave Sites** Why is the ca., 1870s - 1880s platted cemetery for the Trimbles adjacent to the PVC before it became an official cemetery with deeded railroad land in 1899?<sup>5-6</sup> The Trimbles were living on the Turner-Benson Military Warrant lands 1 to 2 miles to the north of their platted cemetery.<sup>1</sup> A further question is



Clementina

the significance of two early PVC tombstones (i.e., W. A. Gibson’s tombstone dated July 23, 1869 and the Jacob Miller tombstone dated February 27, 1878), and many other tombstones with 1880s and 1890s dates before the PVC Association gained ownership in 1899.



Robert

**Want more information?** Contact an officer of the Hugo Neighborhood on how you can become involved in your community’s history and land use.

- 2007 Josephine County Assessor map.
- Conex, Inc. 1974. *Survey Of Existing Roadway* [Schoolhouse Creek Road]. Survey No. 59 74. Grants Pass, OR.

## Hugo Neighborhood Association & Historical Society's Mission

This information brochure is one of a series of documents published by the Hugo Neighborhood Association & Historical Society (*Hugo Neighborhood*). It is designed to be shared with neighbors for the purpose of helping protect our rural quality of life by promoting an informed citizenry in decision-making. The *Hugo Neighborhood* is an informal nonprofit charitable and educational organization with a land use and history mission promoting the social welfare of its neighbors.

### Land Use & History

The *Hugo Neighborhood's* history mission is to promote the welfare of the citizens of the area by working to promote and preserve its local history (preserving, documenting, promoting & interpreting) and promoting education. It will act, as requested, as a technical resource assisting neighbors to understand and represent their historical resources.

Volunteer membership dues are \$10.00 annually and used for paper, ink, envelopes, publications and mailings. Make checks to the *Hugo Neighborhood* and send them to a member of the Hugo Graves Team; they will get them to our treasurer. Send us your e-mail address if you want to know what we are doing.

#### *Hugo Neighborhood Association*

Email: [hugo@jeffnet.org](mailto:hugo@jeffnet.org)

Web Page: <http://www.hugoneighborhood.org/>

Edited by Jean Boling, Liz Butowitsch, Karen Rose,  
Wayne McKy, & Mike Walker

### Hugo Graves Team Hugo Neighborhood Association

Jean Boling, Member  
Historic Sites Chair,  
Josephine County Historical Society  
124 NW Booth Street  
Grants Pass, Oregon 97526

Liz Butowitsch, Member  
Hugo Neighborhood  
6520 Tunnel Loop Road  
Grants Pass, Oregon 97526



*Elmer*

Mike Walker, Member  
Officer, Hugo Neighborhood  
3388B Merlin Rd #195  
Grants Pass, Oregon 97526



*Medissia*

## TRIMBLES'S GRAVE

Very Draft



*Trimble Family Plot Stone*

June 9, 2011

Hugo Neighborhood Association &  
Historical Society

Josephine County Historical Society