

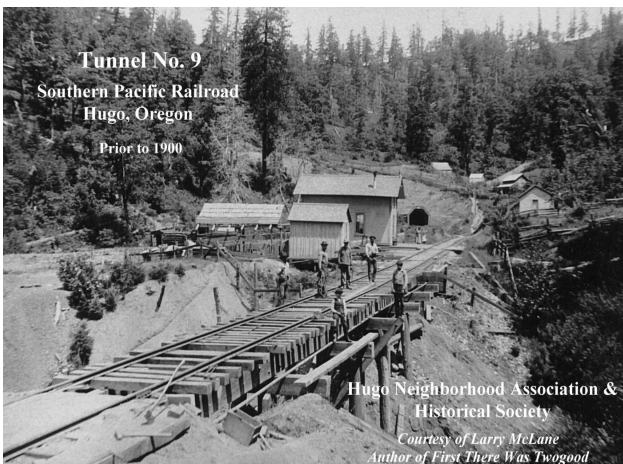
---

---

## Southern Pacific (SP): Umpqua & Rogue Valleys Timber Trestles

**Oregon & California (O & C) Railroad** The first rail out of Portland was laid in 1869 and by December, 1872, the tracks were completed to Roseburg. Construction of the O & C Railroad was resumed from Roseburg in 1881. Grave Creek Tunnel, better known in later years as Tunnel No. 9, was completed north of Hugo July 4. The first official train arrived in Grants Pass December 2, 1883.<sup>1&2</sup>

Many timber trestles were built in the 19th century



**Photo 1. Tunnel No. 9 and Section House:  
ca., Before 1900**

Courtesy of Larry McLane

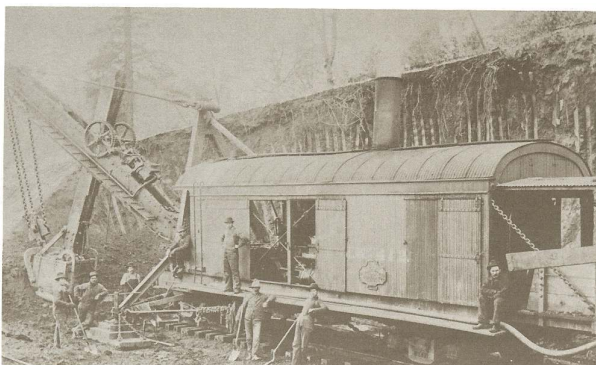
with the expectation that they would be temporary. Timber trestles were used to get the railroad to its destination. Once the railroad was running, it was used to transport the material to replace trestles with more permanent works, transporting and dumping fill around some trestles and transporting stone or steel to replace others with more permanent bridges.

---

---

## Wooden Trestles: 1881 - 1910s

The small wooden trestle (Photo 1) just south of Tunnel No. 9 is substantial when compared to the culvert that took its place. It was just one of many O & C Railroad trestles built in the Umpqua and Rogue valleys from 1881 - 1887.



**Photo 2. Steam Shovel Working At Big Hades Trestle**  
Courtesy of Josephine County Historical Society & Larry McLane

**Brimstone Trestle Fill: 1905 - 1909** Brimstone Trestle (Title page Photo ) was constructed in the summer of 1899, after the original trestle burned down. Wooden trestles were frequently damaged by fire, especially in the hot, dry summers by sparks from the wood-burning engines. December of 1905 saw the beginning of the end of this masterpiece. Brimstone Trestle was to become a fill. The project started in December 1905, was under way in earnest by the spring of 1906, and was finally completed in 1909, thus ending the era of the many trestles between Grave Creek and the Hugo Tunnel.<sup>3</sup> Later, tools such as the earthmover made it cheaper to construct a high fill directly instead of first construct-ing a trestle from which to dump the fill.

---

---

## Fills: 1910s - Present

**Southern Oregon Fills: ca., 1900 - 1910** This trestle replacement with fills was the general pattern in the Umpqua and Rogue valleys during the 1910s. Wooden trestles were expensive to maintain even if they did not burn down like the Brimstone Trestle. The steam shovel had arrived (Photo 2).

**Grave Creek Railroad Bridge** The Central Oregon and Pacific Bridge or Grave Creek Railroad Bridge is still there (Photo 3). This deck plate girder bridge was built in 1903 by the Southern Pacific Railroad to replace a wooden trestle.



**Photo 3. Grave Creek Bridge: 2010**

---

1. Southern Pacific Company. April 18, 1969. *History Of Southern Pacific In Oregon*. Letter to Josephine County Historical Society.  
2. Ed Austin & Ton Dill. 1993. *The Southern Pacific in Oregon*. Everett, WA.  
3. McLane, Larry. 1995. *First There Was Twogood*. Sexton Enterprises. Sunny Valley, OR.

---

---

## Hugo Neighborhood Association & Historical Society's Mission

This information brochure is one of a series of documents published by the Hugo Neighborhood Association & Historical Society (*Hugo Neighborhood*). It is designed to be shared with neighbors for the purpose of helping protect our rural quality of life by promoting an informed citizenry in decision-making. The *Hugo Neighborhood* is an informal nonprofit charitable and educational organization with a land use and history mission of promoting the social welfare of its neighbors.

### Land Use & History

The *Hugo Neighborhood's* land use mission is to promote Oregon Statewide Goal 1 — Citizen Involvement, and to preserve, protect, and enhance the livability and economic viability of its farms, forests, and rural neighbors. It will act, if requested, as a technical resource assisting neighbors to represent themselves.

Its history mission is to educate, collect, preserve, interpret, and research its local history and to encourage public interest in the history of the Hugo area.

Volunteer membership dues are \$10.00 annually per family and normally used for paper, ink, envelopes, publications and mailings. Send us your e-mail address if you want to know what we are doing.

*Hugo Neighborhood*

Email: [hugo@jeffnet.org](mailto:hugo@jeffnet.org)

Web Page: <http://www.hugoneighborhood.org/>

Edited by Karen Rose & Mike Walker

### HNA&HS Officers

Wayne McKy, Chair  
6497 Hugo Road  
Grants Pass, Oregon 97526

Mike Walker, Education Chair  
3388B Merlin Rd #195  
Grants Pass, Oregon 97526

### Web Master

Karen Rose  
575 Red Mountain Drive  
Grants Pass, Oregon 97526

HNA&HS 2011-RR40

C:\Documents and Settings\mike\My  
Documents\Genealogy\History\_Brochures\Railroad\Brochures\BROCHURE\_  
RR40 SP Umpqua & Rogue Timber Trestles\_060711.wpd

---

---

# SP: UMPQUA & ROGUE VALLEYS TIMBER TRESTLES



*Brimstone Trestle: 1899*

Courtesy of Josephine County Historical Society &  
Larry McLane

June 4, 2011

**Hugo Neighborhood Association &  
Historical Society**