

Walker Brothers: Augustus & Wesley

Walker Brothers' DLCs

On September 27, 1850, the United States Congress passed the Donation Land Act. By 1855 Wesley and Augustus Walker had both settled their 160 acre DLCs. Wesley Walker's claim was adjacent and northeast up Jumpoff Joe Creek from his brother's land.



Wesley R. Walker

Wesley R. Walker - Donation Land Claim

Certificate Number: 778
Notification Number: 699
Claimant's Name: Wesley R. Walker
County in Oregon: Josephine County
Date & Place of Birth: 1824, Henderson County, Kentucky
Arrival In Oregon: October 12, 1852
Date Claim Settled: March 1, 1855
Patent by President Andrew Johnson, July 26, 1866.

Augustus L. and Wesley R. Walker were white native citizens of the United States both born in Henderson County, Kentucky. They were single men when they arrived in Oregon October 12, 1852. Each brother ending up with a patent to 160 acres on Jumpoff Joe Creek in northern Josephine County. They were farmers and miners and started the tradition of farming on this bottom land.

1866 DLC On July 26, 1866 Wesley R. Walker was issued a DLC patent for 164.04 acres in Hugo, Oregon (Patent No. 778).¹

1850 Census. Scottville, MacOupin, Illinois?

| | | |
|--------------------|----------|----------|
| Wm R. Walker | 24 years | Merchant |
| Martha B. Walker | 17 years | |
| Augustus L. Walker | 18 years | |
| Virginia P. Walker | 16 years | |

All were born in Kentucky except for Virginia.

1855 The brothers were mining at Galice when the Indian War began October 1855. They enlisted as Privates and fought in the "Siege of Galice Creek."²

Donation Land Claims (DLCs)

1860 Census Walker's Mill Precinct, Josephine County, Oregon

| | | | | | |
|----------------|------|------------|-------|------|--------|
| W. R. Walker | Male | Farmer | KY | 1824 | 35 yrs |
| A. L. Walker | Male | Farmer | KY | 1829 | 31 yrs |
| A Taylor | Male | Farm Labor | OH | 1838 | 22 yrs |
| J. T. Lane | Male | Farm Labor | MO | 1833 | 27 yrs |
| Starling Moore | Male | Farm Labor | KY | 1827 | 33 yrs |
| G. W. Lane | Male | Farm Labor | DC | 1820 | 40 yrs |
| Ah Youck | Male | Miner | China | 1827 | 33 yrs |

1861 Wesley Walker married Harrietta Peterson September 15, 1861.

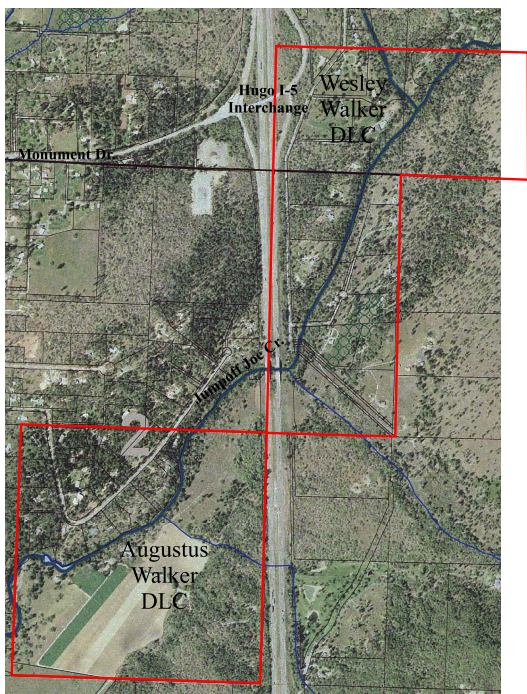
1880 Census. Big Bend, Curry County, OR?

Augustus L. Walker ca., 47 years Placer Miner
 Birth Place: Kentucky
 Father's Birth Place: Virginia
 Mother's Birth Place: Kentucky

Walker Mountain Much later Walker Mountain was named after Augustus and Wesley.

Walker Creek Walker Creek was also named for the brothers. It is the south fork of Schoolhouse Creek.³

Want more information? Contact an officer of the *Hugo Neighborhood* on how you can become involved in your community history and land use.



2002 Aerial Photo of Walker Brothers DLCs
Along Jumpoff Joe Creek

1. Bureau of Land Management (BLM), General Land Office (GLO) Records. 2007. Official Federal Land Records Site (<http://www.glorerecords.blm.gov/>). Internet.
 2. Claudette Morning Pruitt. 2004. *Come Take a Historic Journey along the Galice Trail*. Morning Creek Enterprises. Page 16. Grants Pass, OR.
 3. State Water Resources Board. 1970. Rogue Drainage Basin Oregon. Map No. 15.6. Salem, OR.

Hugo Neighborhood Association & Historical Society's Mission

This information brochure is one of a series of documents published by the Hugo Neighborhood Association & Historical Society (*Hugo Neighborhood*). It is designed to be shared with neighbors for the purpose of helping protect our rural quality of life by promoting an informed citizenry in decision-making. The *Hugo Neighborhood* is an informal nonprofit charitable and educational organization with a land use and history mission of promoting the social welfare of its neighbors.

Land Use & History

The *Hugo Neighborhood's* land use mission is to promote Oregon Statewide Goal 1 — Citizen Involvement, and to preserve, protect, and enhance the livability and economic viability of its farms, forests, and rural neighbors. It will act, if requested, as a technical resource assisting neighbors to represent themselves.

Its history mission is to educate, collect, preserve, interpret, and research its local history and to encourage public interest in the history of the Hugo area.

Volunteer membership dues are \$10.00 annually per family and normally used for paper, ink, envelopes, publications and mailings. Send us your e-mail address if you want to know what we are doing.

Email: hugo@jeffnet.org

Web Page: <http://www.hugoneighborhood.org/>

Edited by Jean Boling, Karen Rose,

Wayne McKy, & Mike Walker

HNA&HS Officers

Wayne McKy, Chair
6497 Hugo Road
Grants Pass, Oregon 97526

Mike Walker, Education Chair
3388B Merlin Rd #195
Grants Pass, Oregon 97526

Web Master

Karen Rose, Web Master
575 Red Mountain Drive
Grants Pass, Oregon 97526

Josephine County Historical Society

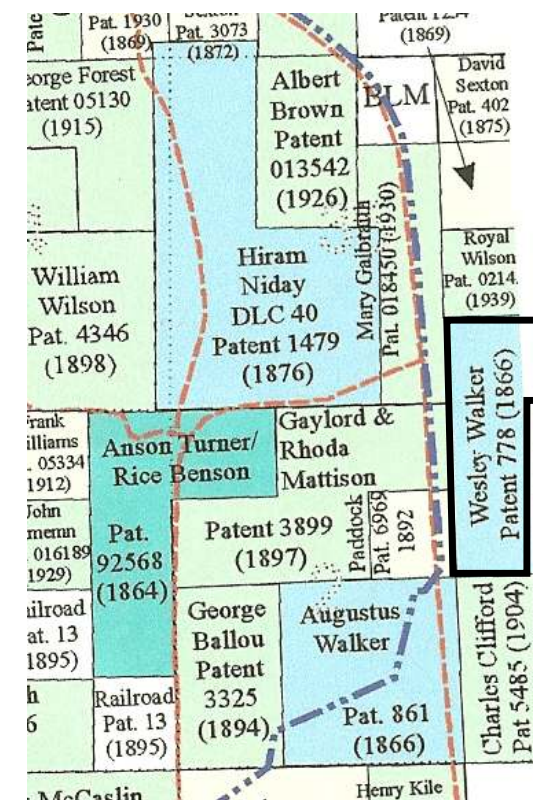
Jean Boling, Historic Sites Chair
214 NW Booth Street
Grants Pass, Oregon 97526

Not Quality Controlled, Nor Edited

WESLEY WALKER: HUGO PIONEER

Very Draft

Brochure 88 in Hugo's Pioneers Brochure Series



Wesley Walker's DLC: 1866

January 18, 2008
Updated July 5, 2011

Hugo Neighborhood Association &
Historical Society
Josephine County Historical Society

Brochure 88 in Hugo's Pioneers Brochure Series

HNA & HS 2008/2011 - 88

C:\Documents and Settings\mike\My Documents\Genealogy\History_Brochures\People Pioneers
1800s\BROCHURE_88 Walker Wesley 011808.wpd