

Hugo's Pioneers

“S. B. Rob.”

Born:
 Birth Place:
 Father's Birth Place:
 Mother's Birth Place:

???

Born:
 Birth Place:
 Father's Birth Place:
 Mother's Birth Place:

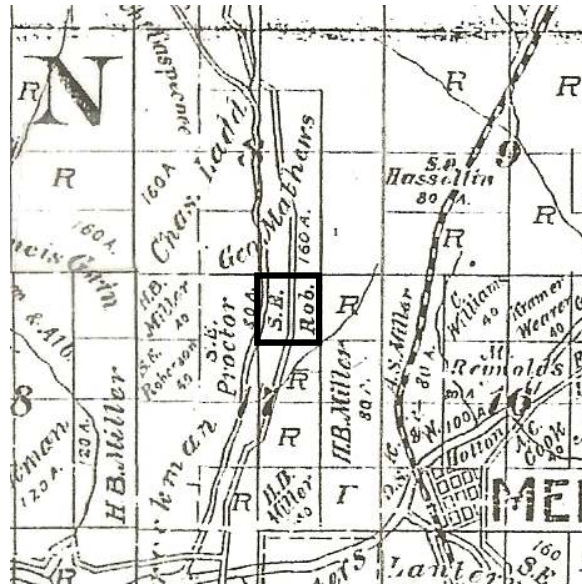


1. Bureau of Land Management (BLM), General Land Office (GLO) Records. 2007. Official Federal Land Records Site (<http://www.glorerecords.blm.gov/>). Internet.
 2. Hugo Neighborhood. 2007. *Hugo Pioneers*. Map Of Federal Land Transfer in Hugo, Oregon. Hugo, OR.
 3. Koch, Joseph , Draughtsman. 1895 Official Josephine County, Oregon. Map. Scale 1 inch = 1 mile. Meston - Dygert Book M'F'G. Portland, OR.
 4. USDA, Forest Service, North Pacific Region, National Forest Rogue River & Siskiyou. 1939 - 1940. *Project F.S. 6-66*. Designating Symbol GIZ.

The “S. B. Rob.” Family, Hugo Pioneers: 18?? - 19??

1895 “S. B. Rob.” was in possession of 40 acres of bottom land in the lower Quartz Creek drainage.³

The abbreviation “Rob.” stands for ?? “Robert”
 “Robertson”

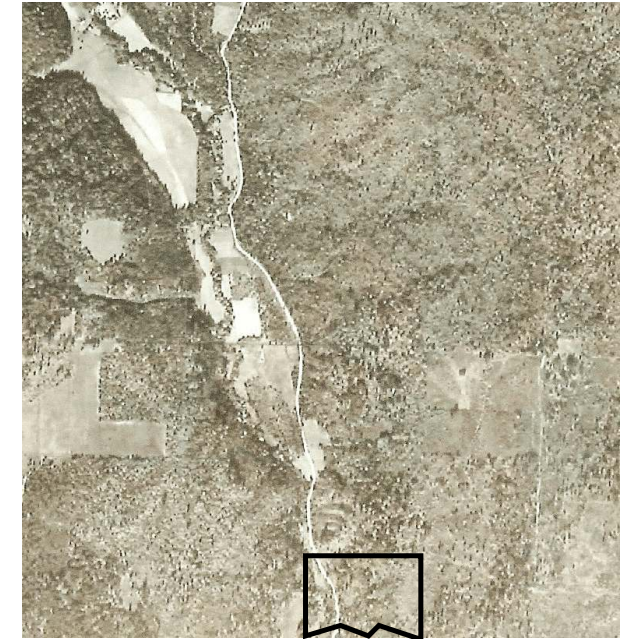


S. B. Rob Ranch: 1895

Quartz Creek Drainage

1939 The “S. B. Rob.” ranch was mostly forest land surrounding a small amount of bottom land in Quartz Creek.⁴

Want more information? Contact an officer of the



*“S. B. Rob.” Quartz Creek Ranch: 1895
 On 1939 Aerial Photograph*

Hugo Neighborhood on how you can become involved in your community's history and land use.

Hugo Neighborhood Association & Historical Society's Mission

This information brochure is one of a series of documents published by the Hugo Neighborhood Association & Historical Society (*Hugo Neighborhood*). It is designed to be shared with neighbors for the purpose of helping protect our rural quality of life by promoting an informed citizenry in decision-making. The *Hugo Neighborhood* is an informal nonprofit charitable and educational organization with a land use and history mission of promoting the social welfare of its neighbors.

Land Use & History

The *Hugo Neighborhood's* land use mission is to promote Oregon Statewide Goal 1 — Citizen Involvement, and to preserve, protect, and enhance the livability and economic viability of its farms, forests, and rural neighbors. It will act, if requested, as a technical resource assisting neighbors to represent themselves.

Its history mission is to educate, collect, preserve, interpret, and research its local history and to encourage public interest in the history of the Hugo area.

Volunteer membership dues are \$10.00 annually per family and normally used for paper, ink, envelopes, publications and mailings. Send us your e-mail address if you want to know what we are doing.

Email: hugo@jeffnet.org
Web Page: <http://www.hugoneighborhood.org/>
Edited by Jean Boling, Karen Rose,
Wayne McKy, & Mike Walker

HNA&HS Officers

Wayne McKy, Chair
6497 Hugo Road
Grants Pass, Oregon 97526

Mike Walker, Education Chair
3388B Merlin Rd #195
Grants Pass, Oregon 97526

Web Master

Karen Rose, Web Master
575 Red Mountain Drive
Grants Pass, Oregon 97526

Josephine County Historical Society

Jean Boling, Historic Sites Chair
214 NW Booth Street
Grants Pass, Oregon 97526

Not Quality Controlled, Nor Edited

Brochure 66 in Hugo's Pioneers Brochure Series
HNA&HS 2008/2011 - 66
C:\Documents and Settings\mike\My Documents\Genealogy\History_Brochures\People Pioneers
1800s\BROCHURE_66 Rob S B 011808.wpd

“S. B. ROB” FAMILY: HUGO PIONEERS

Very Draft

Brochure 66 in Hugo's Pioneers Brochure Series



January 18, 2008
Updated July 5, 2011

Hugo Neighborhood Association &
Historical Society

Josephine County Historical Society