
Sylvester & Mabel Butler

For purposes of the Hugo's Settler brochure series, an early Hugo settler includes anyone who lived, worked, or owned property there sometime from 1900 through the 1930s.

Sylvester J. Butler

Born: 1871 Illinois
Died: 1941 Oregon
Father James F. Butler: 1827 England
Mother Sarah Gilbert: 1826 England

Mabel V. H. Butler

Born: 1887 California
Father's Birth Place: Illinois
Mother's Birth Place: California

1930 Census. Ventura Precinct, Ventura County, California

Sylvester J. Buttler	Head	IL	1871	59 yrs
Mabel V. H. Buttler	Wife	CA	1887	43 yrs
James V. Buttler	Son	CA	1907	23 yrs
George A. Buttler	Son	CA	1908	22 yrs
Gilbert W. Buttler	Son	CA	1911	19 yrs
Sylvester W. Buttler	Son	CA	1913	17 yrs
Earl N. Buttler	Son	CA	1915	15 yrs
Mary O. Buttler	Dau	CA	1917	13 yrs
Benjamin L. Buttler	Son	CA	1919	11 yrs
Jonathan O. Buttler	Son	CA	1923	7 yrs
Alice M. Buttler	Dau	CA	1915	5 yrs
Rosie M. Buttler	Dau	CA	1926	4 yrs

The Sylvester Butler Family, Hugo Settlers: ca., 1930s - 19??

1930 in California In 1930 in Ventura, California Sylvester Butler and his three sons, James, George, Gilbert, and Sylvester W. were farmers, practicing general framing.

1930¹ Mabel and Sylvester Butler had 13 children, and Mary was about the 3rd from the youngest. They came to the Hugo area in about 1930 from the Ventura, California area. Mary was born on Sulpher (sp.?) Mt. in that area in 1916.

In the Hugo area they lived on the crest of the old hi-way over Mt. Sexton. The children walked to school at Hugo and they got their mail at Hugo.

Father Sylvester and brothers George and Gilbert mostly ran the string of mules to take supplies to the weather crew on Mt. Sexton. When the snow was on the ground, the mules pulled a sled, and sometimes Mary went with her brothers and father.

In 2002 four children were still alive, Ted at Klamath Falls, Rosie at St. Louis, Nellie Elenberger in California, and Mary in Arizona.

Crest Of Old Highway Over Mt. Sexton

2002 In 2002 Mary (Butler) Lowes lived in Arizona.

Mary and William Lowes
3940 Bosque Road
Garden Valley, Arizona 86413

Wayne McKy and Mike Walker wrote her a letter in 2002, but she never responded.

1932 The 1932 Metsker map does not identify any Butlers at Mt. Sexton pass.²

1932 The wedding bells are ringing again in this community. Miss Reba Kolkow and James Butler were married Tuesday. A charivari party was given them at the Kolkow home, Tuesday evening (Hugo — Three Pines, *Grants Pass Bulletin*, February 12, 1932). **Relationship between James Butler and Mabel and Sylvester Butler unknown.**

2001 Earl N. Butler passed away September 21, 2001 in Grants Pass, Josephine County, Oregon.³

Want more information? Contact an officer of the *Hugo Neighborhood* on how you can become involved in your community's history and land use.

1. Vernon Luwick. February 22, 2002. Communication to Mike Walker, Secretary, Hugo Neighborhood Association & Historical Society.
2. Metsker, Chas. F. *1932 Metsker Map. Josephine County, Oregon*. Portland, OR.
3. Social Security Death Index.

Hugo Neighborhood Association & Historical Society's Mission

This information brochure is one of a series of documents published by the Hugo Neighborhood Association & Historical Society (*Hugo Neighborhood*). It is designed to be shared with neighbors for the purpose of helping protect our rural quality of life by promoting an informed citizenry in decision-making. The *Hugo Neighborhood* is an informal nonprofit charitable and educational organization with a land use and history mission of promoting the social welfare of its neighbors.

Land Use & History

The *Hugo Neighborhood's* land use mission is to promote Oregon Statewide Goal 1 — Citizen Involvement, and to preserve, protect, and enhance the livability and economic viability of its farms, forests, and rural neighbors. It will act, if requested, as a technical resource assisting neighbors to represent themselves.

Its history mission is to educate, collect, preserve, interpret, and research its local history and to encourage public interest in the history of the Hugo area.

Volunteer membership dues are \$10.00 annually per family and normally used for paper, ink, envelopes, publications and mailings. Send us your e-mail address if you want to know what we are doing.

Email: hugo@jeffnet.org

Web Page: <http://jeffnet.org/~hugo/>

Edited by Karen Rose, Wayne McKy, & Mike Walker

HNA&HS Officers

Hal Anthony, Outreach Chair
3995 Russell Road
Grants Pass, Oregon 97526

Wayne McKy, Chair
6497 Hugo Road
Grants Pass, Oregon 97526

Mike Walker, Education Chair
3388B Merlin Rd #195
Grants Pass, Oregon 97526

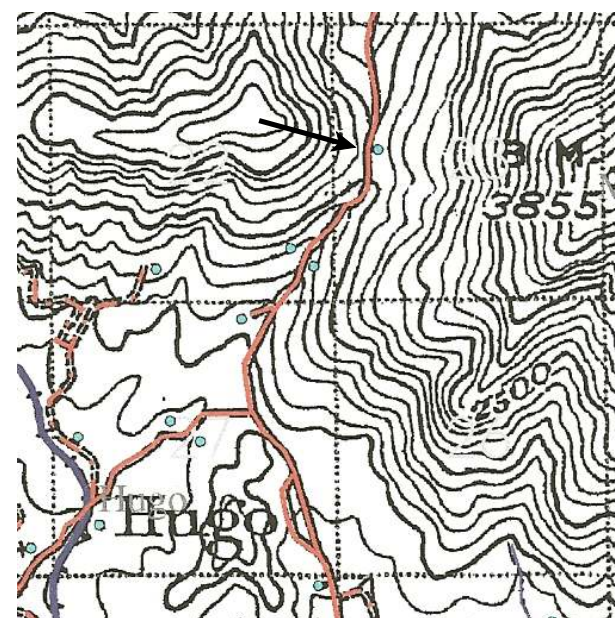
Karen Rose, Web Master
575 Red Mountain Drive
Grants Pass, Oregon 97526

Not Quality Controlled, Nor Edited

BUTLER FAMILY: HUGO SETTLERS



Very Draft
Brochure 62 Of Hugo's Early
Settler Brochure Series



Mt. Sexton Pass: ca., 1901 - 1923

February 5, 2008

**Hugo Neighborhood Association &
Historical Society**

Brochure 62 in Hugo's Early Settler Brochure Series

HNA & HS 2008 - 62

C:\Documents and Settings\mike\My Documents\Genealogy\History_Brochures\People Settlers 1900 - 1930s\BROCHURE_62 Butler Sylvester 020508.wpd