

## George & Ellen Mathews?

### George Mathews

Born: 1850 Canada  
 Father's Birth Place: Indiana  
 Mother's Birth Place: England

### Ellen Mathews

Born: 1846 Canada  
 Father's Birth Place: Indiana  
 Mother's Birth Place: Indiana

**1895** Mathews was proving up his homestead along the lower Quartz Creek's bottom lands in 1895.<sup>1</sup>

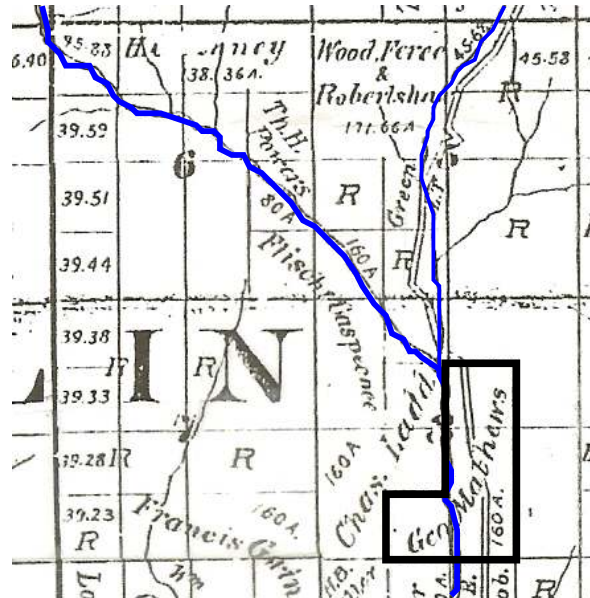
**1896 George Mathews' Hugo Homestead** On May 22, 1896 George Mathews was issued a homestead patent for 160 acres in Hugo, Oregon (Patent No. 3699).<sup>2-3</sup> The intent of the 1862



Homestead Act was to grant land for agriculture. James, and other claimants, had to prove they lived on the land for a minimum of five years, and made the required improvements before they were eligible to be issued a certificate. For a variety of reasons, the "proving up" period was five to 10 years and longer.

1. Koch, Joseph, Draughtsman. 1895 Official Josephine County, Oregon. Map. Scale 1 inch = 1 mile. Meston - Dygert Book M'F'G. Portland, OR.  
 2. Bureau of Land Management (BLM), General Land Office (GLO) Records. 2007. Official Federal Land Records Site (<http://www.glorerecords.blm.gov/>). Internet.  
 3. Hugo Neighborhood. 2007. *Hugo Pioneers*. Map Of Federal Land Transfer in Hugo, Oregon. Hugo, OR.  
 4. Metsher, Chas. F. 1932 *Metsker Map. Josephine County, Oregon*. Portland, OR.  
 5. USDA, Forest Service, North Pacific Region, National Forest Rogue River & Siskiyou. 1939 - 1940. *Project F.S. 6-66*. Designating Symbol GIZ.

## The George Mathews Family, Hugo Pioneers: ca., 1890s - 1900s



*George Mathews Quartz Creek Homestead: 1895*

### 1900 Census. Grants Pass, Josephine Co., OR

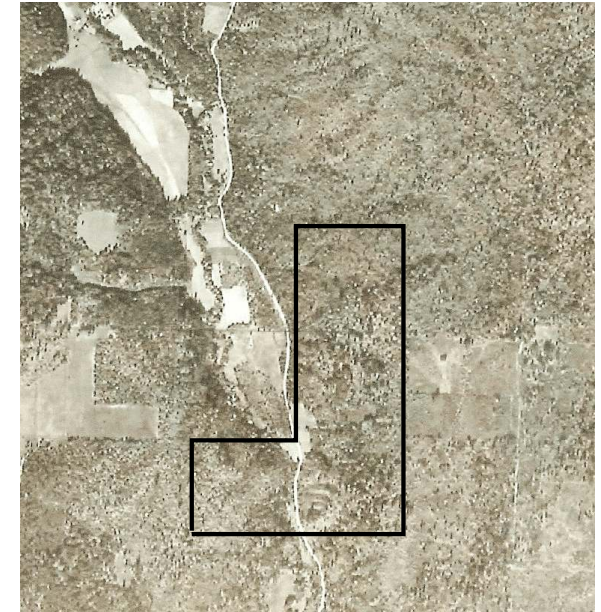
George Matthews	Head	Can.	1850	50 yrs
Ellen Matthews	Wife	Can.	1846	54 yrs
Mary Matthews	Dau	WI	1879	21 yrs
James E. Matthews	Son	WI	1880	20 yrs
John B. Matthews	Son	OR	1893	7 yrs

In 1900 George Matthews was a day laborer.

## Homesteader

**1932** G. E. Anderson was in possession of the old Mathews homestead in 1932.

**1939** The 1939 aerial photograph of the old Mathews homestead is probably an accurate depiction of the homestead as having been mostly upland forest.



*George Mathews' 1896 Quartz Creek Homestead On 1939 Aerial Photograph*

**Want more information?** Contact an officer of the *Hugo Neighborhood* on how you can become involved in your community's history and land use.

## Hugo Neighborhood Association & Historical Society's Mission

This information brochure is one of a series of documents published by the Hugo Neighborhood Association & Historical Society (*Hugo Neighborhood*). It is designed to be shared with neighbors for the purpose of helping protect our rural quality of life by promoting an informed citizenry in decision-making. The *Hugo Neighborhood* is an informal nonprofit charitable and educational organization with a land use and history mission of promoting the social welfare of its neighbors.

### Land Use & History

The *Hugo Neighborhood's* land use mission is to promote Oregon Statewide Goal 1 — Citizen Involvement, and to preserve, protect, and enhance the livability and economic viability of its farms, forests, and rural neighbors. It will act, if requested, as a technical resource assisting neighbors to represent themselves.

Its history mission is to educate, collect, preserve, interpret, and research its local history and to encourage public interest in the history of the Hugo area.

Volunteer membership dues are \$10.00 annually per family and normally used for paper, ink, envelopes, publications and mailings. Send us your e-mail address if you want to know what we are doing.

Email: [hugo@jeffnet.org](mailto:hugo@jeffnet.org)

Web Page: <http://www.hugoneighborhood.org/>

Edited by Jean Boling, Karen Rose,

Wayne McKy, & Mike Walker

### HNA&HS Officers

Wayne McKy, Chair  
6497 Hugo Road  
Grants Pass, Oregon 97526

Mike Walker, Education Chair  
3388B Merlin Rd #195  
Grants Pass, Oregon 97526

### Web Master

Karen Rose, Web Master  
575 Red Mountain Drive  
Grants Pass, Oregon 97526

### Josephine County Historical Society

Jean Boling, Historic Sites Chair  
Josephine County Historical Society  
124 NW Booth Street  
Grants Pass, Oregon 97526

Not Quality Controlled, Nor Edited

# GEORGE MATHEWS FAMILY: HUGO PIONEERS

Very Draft

Brochure 38 in Hugo's Pioneers Brochure Series



	(1900)		(1912)	
Roy Garoutte Pat. 6086 (1908)	Hammon Kinney Patent 6306 (1890)		Clementina Trimble Pat. 1701 (1885)	Railroad Pat. 100 (1898) Railroad Pat. 42 (1896)
	Alfred Jones Patent 5571 (1904)	Thomas Powers Patent 3239 (1894)		Jacob Chadwick Patent 4420 (1882) BLM
	Johan Hill Patent 01445 (1914)		George Yocum Pat. 1157 (1882)	Charles Brewer Patent 013160 (1924)
	BLM	BLM	BLM	James Hart Patent 3755 (1896)
George Elsey Pat. 011335 (1923)	David Leefield Pat. 016108 (1928)	Charles Andrews Patent 011332 1923	Charles Ladd Patent 2478 (1891)	George Mathews Patent 3699 (1896)
		Enos Gwin Patent 5628 (1892)		Thomas Overton Pat. 3783 (1896)

George Mathews' Homestead: 1896

February 24, 2008  
Updated July 3, 2011

Hugo Neighborhood Association &  
Historical Society  
Josephine County Historical Society