

Eveline (Murray) (Triplet) Martin

1880 Census. Jump Off Joe & Galice Creek Precinct, Josephine County, Oregon

James Triplet	Father	MO	1827	53 yrs
William Triplet	Son	MO	1851	29 yrs
Evia Triplet	D-in-law	OR	1855	25 yrs
Mary Triplet	G-dau	OR	1876	4 yrs
Edward Triplet	G-son	OR	1876	2 yrs
Henry Triplet	G-son	OR	1878	2 ms
Clayborn W. Triplet	Son	OR	1861	19 yrs
Henry H. Triplet	Son	OR	1859	21 yrs

James was a miner and William was a stone cutter.

William and Evia Triplet are married (William and Eveline Triplet). Eveline's maiden name was Murray.



1886 William Triplet passed.

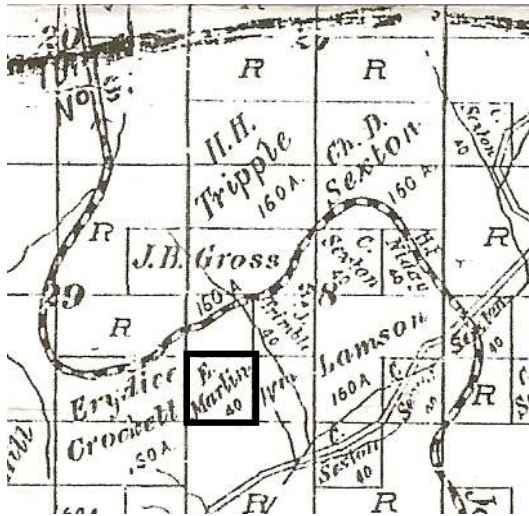
1895 E. Martin possessed 40 acres in 1895 located in the Bummer Creek drainage.¹ This is the same 40 acres that would become the Eveline Martin homestead in 1900.

1900 Census. Merlin Precinct, Josephine Co., OR

Eveline Martin	Head	OR	1856	44 yrs
James E. Triplet	Son	OR	1878	22 yrs
Henry H. Triplet	Son	OR	1880	20 yrs
Rosa E. Triplet	Dau	OR	1882	18 yrs
William A. Triplet	Son	OR	1886	14 yrs
John Erving	Boarder	MO	1895	5 yrs
James C. Havelors	Boarder	MN	1882	18 yrs

Eveline Martin, A Hugo Pioneer: 1886 - 1902

Eveline Martin is Evia Triplet (see 1880 & 1900 censuses). Eveline was a farmer. James and Henry were railroad laborers.

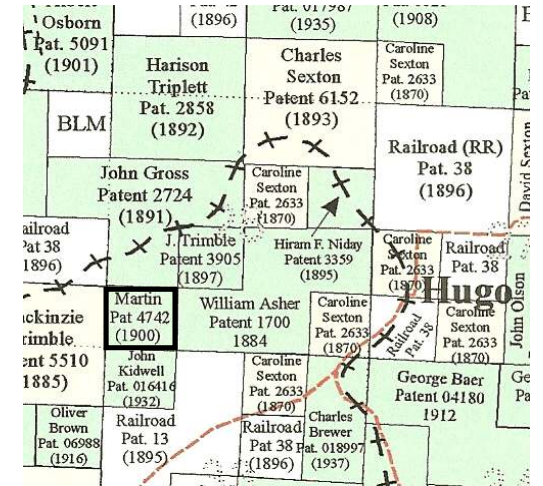


E. Martin's Hugo Homestead: 1895

1900 Eveline Martin's Hugo Homestead On May 3, 1900 Eveline Martin was issued a homestead certificate for 40 acres in Hugo, Oregon (Patent No. 4742).²⁻³

1902 Eveline Triplet passed. "Mrs. Triplet was a widow, her husband, Wm. Triplet, having been drowned in the Rogue River some 17 years ago. She was 49 years of age. She leaves five children, three sons, and two daughters."

Homesteader



Eveline Martin's Hugo Homestead: 1900

Want more information? Contact an officer of the *Hugo Neighborhood* on how you can become involved in your community's history and land use.

1. Koch, Joseph, Draughtsman. 1895 Official Josephine County, Oregon. Map. Scale 1 inch = 1 mile. Meston - Dygert Book M'F'G. Portland, OR.
2. Bureau of Land Management (BLM), General Land Office (GLO) Records. 2007. Official Federal Land Records Site (<http://www.glorerecords.blm.gov/>). Internet.
3. Hugo Neighborhood. 2007. *Hugo Pioneers*. Map Of Federal Land Transfer in Hugo, Oregon. Hugo, OR.
4. USDA, Forest Service, North Pacific Region, National Forest Rogue River & Siskiyou. 1939 - 1940. *Project F.S. 6-66*. Designating Symbol GIZ.

Hugo Neighborhood Association & Historical Society's Mission

This information brochure is one of a series of documents published by the Hugo Neighborhood Association & Historical Society (*Hugo Neighborhood*). It is designed to be shared with neighbors for the purpose of helping protect our rural quality of life by promoting an informed citizenry in decision-making. The *Hugo Neighborhood* is an informal nonprofit charitable and educational organization with a land use and history mission of promoting the social welfare of its neighbors.

Land Use & History

The *Hugo Neighborhood's* land use mission is to promote Oregon Statewide Goal 1 — Citizen Involvement, and to preserve, protect, and enhance the livability and economic viability of its farms, forests, and rural neighbors. It will act, if requested, as a technical resource assisting neighbors to represent themselves.

Its history mission is to educate, collect, preserve, interpret, and research its local history and to encourage public interest in the history of the Hugo area.

Volunteer membership dues are \$10.00 annually per family and normally used for paper, ink, envelopes, publications and mailings. Send us your e-mail address if you want to know what we are doing.

Email: hugo@jeffnet.org

Web Page: <http://www.hugoneighborhood.org/>

Edited by Jean Boling, Karen Rose,
Wayne McKy, & Mike Walker

HNA&HS Officers

Wayne McKy, Chair
6497 Hugo Road
Grants Pass, Oregon 97526

Mike Walker, Education Chair
3388B Merlin Rd #195
Grants Pass, Oregon 97526

Web Master

Karen Rose, Web Master
575 Red Mountain Drive
Grants Pass, Oregon 97526

Josephine County Historical Society

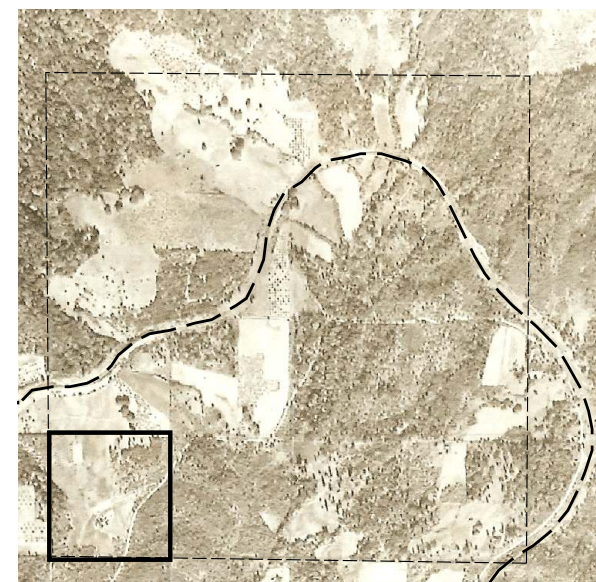
Jean Boling, Historic Sites Chair
Josephine County Historical Society
124 NW Booth Street
Grants Pass, Oregon 97526

Not Quality Controlled, Nor Edited

EVELINE MARTIN: HUGO PIONEER

Very Draft

Brochure 37 in Hugo's Pioneers Brochure Series



*Eveline Martin's 1900 Hugo Homestead
On 1939 Aerial Photograph*

**February 24, 2008
Updated July 3, 2011**

**Hugo Neighborhood Association &
Historical Society
Josephine County Historical Society**