

Asher's First Homesteaded What Became The Lamson Ranch

Asher Family

1870s William and Sophie Asher are married in 1876 in California.

1880 Census. Jump Off Joe Precinct, Josephine County, Oregon

William Asher	Husband	36 years	IND
Sophie Asher	Wife	22 years	CA
Dasey Asher	Daughter	6 years	CA
Lewis Asher	Son	4 years	OR
Alice Asher	Daughter	2 years	OR
James Asher	Son	4 months	OR
Margaret Asher	Mother	57 years	IND
Jacob Holger	Trader	31 years	SWITZ

William Asher was the head of household for eight people. He was a carpenter and proving up his homestead.



1884 Hugo Homestead On April 24, 1884 William Asher was issued a homestead patent for 160 acres in Hugo, Oregon (Patent No. 1700).^{1,2} The intent of the 1862 Homestead Act was to grant land for agriculture.

James, and other claimants, had to prove they lived on the land for a minimum of five years, and made the required improvements before they were eligible to be issued a certificate. For a variety of reasons, the “proving up” period was five to 10 years and longer.

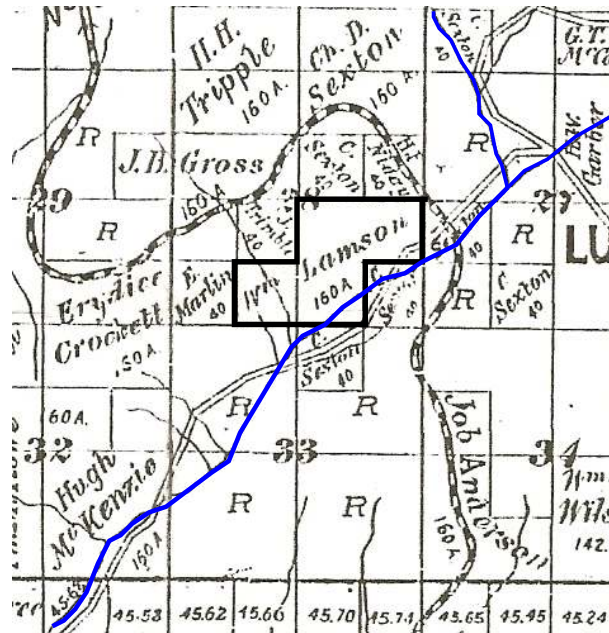
The William Lamson Family, Hugo Pioneers: ca., 1890s - 18??

Lamson Family

1895 In 1895 William Lamson owned the 160 acres the Ashers had homesteaded in Hugo, Oregon.³

1900 Census?

1939 The old Lamson Ranch is owned by others, but the general landscape was probably the same (see title page).⁴



William Lamson's 160 Acre Hugo Ranch: 1895

Bummer Creek Bottom Lands

History Of Property

1884 ¹⁻²	William Asher (160 acres)
1895 ³	William Lamson (160 acres)
1932 ⁵	Edith Ruttle (80 acres)
	Joe Rivers (10 acres)
	Hugh Richardson (30 acres)
	Thos MacKenzie (20 acres)
	Laura J. Kline (20 acres)

Want more information? Contact an officer of the *Hugo Neighborhood* on how you can become involved in your community's history and land use.

1. Bureau of Land Management (BLM), General Land Office (GLO) Records. 2007. Official Federal Land Records Site (<http://www.glorerecords.blm.gov/>). Internet.

2. Hugo Neighborhood. 2007. *Hugo Pioneers*. Map Of Federal Land Transfer in Hugo, Oregon. Hugo, OR.

3. Koch, Joseph, Draughtsman. 1895 Official Josephine County, Oregon. Map. Scale 1 inch = 1 mile. Meston - Dygert Book M'F'G. Portland, OR.

4. USDA, Forest Service, North Pacific Region, National Forest Rogue River & Siskiyou. 1939 - 1940. *Project F.S. 6-66*. Designating Symbol GIZ.

5. Metsher, Chas. F. 1932 *Metsker Map*. Josephine County, Oregon. Portland, OR.

Hugo Neighborhood Association & Historical Society's Mission

This information brochure is one of a series of documents published by the Hugo Neighborhood Association & Historical Society (*Hugo Neighborhood*). It is designed to be shared with neighbors for the purpose of helping protect our rural quality of life by promoting an informed citizenry in decision-making. The *Hugo Neighborhood* is an informal nonprofit charitable and educational organization with a land use and history mission of promoting the social welfare of its neighbors.

Land Use & History

The *Hugo Neighborhood's* land use mission is to promote Oregon Statewide Goal 1 — Citizen Involvement, and to preserve, protect, and enhance the livability and economic viability of its farms, forests, and rural neighbors. It will act, if requested, as a technical resource assisting neighbors to represent themselves.

Its history mission is to educate, collect, preserve, interpret, and research its local history and to encourage public interest in the history of the Hugo area.

Volunteer membership dues are \$10.00 annually per family and normally used for paper, ink, envelopes, publications and mailings. Send us your e-mail address if you want to know what we are doing.

Email: hugo@jeffnet.org

Web Page: <http://www.hugoneighborhood.org/>

Edited by Jean Boling, Karen Rose,
Wayne McKy, & Mike Walker

HNA&HS Officers

Wayne McKy, Chair
6497 Hugo Road
Grants Pass, Oregon 97526

Mike Walker, Education Chair
3388B Merlin Rd #195
Grants Pass, Oregon 97526

Web Master

Karen Rose, Web Master
575 Red Mountain Drive
Grants Pass, Oregon 97526

Josephine County Historical Society

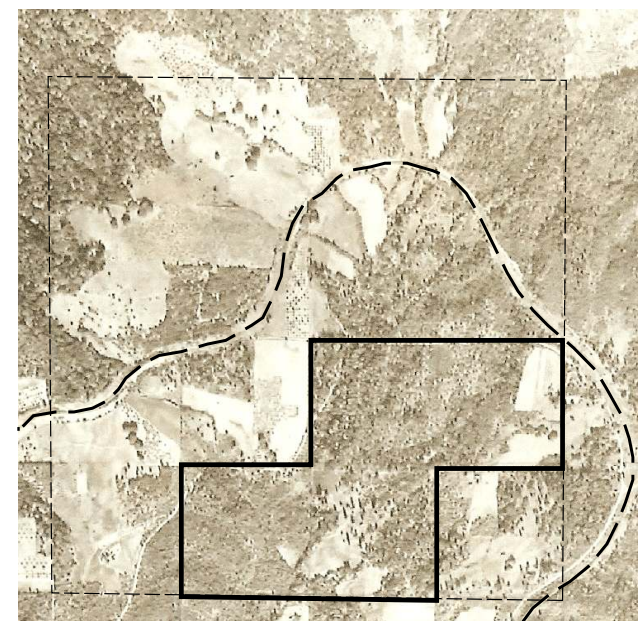
Jean Boling, Historic Sites Chair
Josephine County Historical Society
124 NW Booth Street
Grants Pass, Oregon 97526

Not Quality Controlled, Nor Edited

WILLIAM LAMSON FAMILY: HUGO PIONEERS

Very Draft

Brochure 36 in Hugo's Pioneers Brochure Series



*William Lamson 1895 Ranch
On 1939 Aerial Photograph*

**February 24, 2008
Updated July 3, 2011**

**Hugo Neighborhood Association &
Historical Society
Josephine County Historical Society**