
Hugo's Early Settlers

For purposes of the Hugo's Settler brochure series, an early Hugo settler includes anyone who lived there sometime from 1900 through the 1930s.

Anna Philbrick

Born:
Birth Place:
Father's Birth Place:
Mother's Birth Place:

??

Born:
Birth Place:
Father's Birth Place:
Mother's Birth Place:

Anna Philbrick Family, Early Hugo Settler Family: ca., 1900s - 1930s

1909 Anna Philbrick Cash Entry Philbrick purchased 160 acres under Cash Entry No. 02285 in Josephine County, Oregon. It was issued August 26, 1909 to Anna Philbrick (April 24, 1820: Sale-Cash Entry (3 Stat. 566)).^{1 & 2}

This ground was mostly timberlands across the ridge of the Hugo Hills. Directly to the east approximately ½ to ¾ miles was Mt. Sexton Pass.

[Simple ancestry search for Anna Philbrick in Josephine County, Oregon](#)

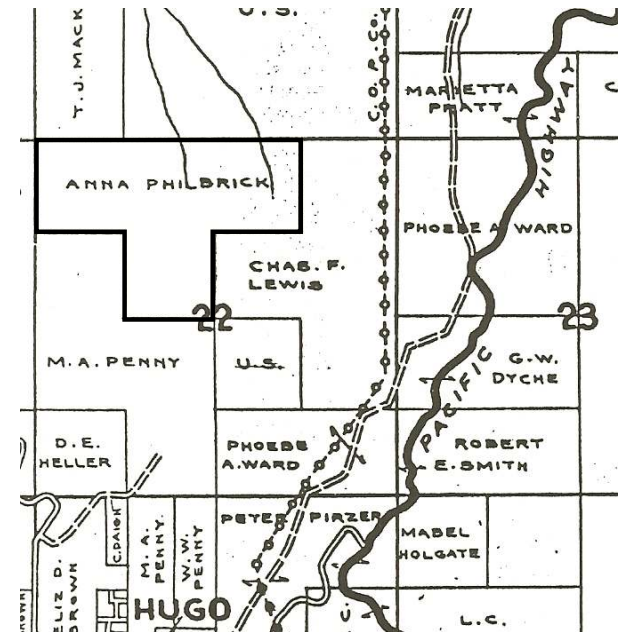
1910. 1-18 names
1920. 1-17 names
1930. 1-15 names

[No Anna Philbricks in Josephine County.](#)

02/01/08

Cash Entry

1932 Anna Philbrick had retained her 160 acres through 1932.



Anna Philbrick's High Lands: 1932

Want more information? Contact an officer of the *Hugo Neighborhood* on how you can become involved in your community's history and land use.

1. Bureau of Land Management (BLM), General Land Office (GLO) Records. 2007. Official Federal Land Records Site (<http://www.glorerecords.blm.gov/>). Internet.
2. Hugo Neighborhood. 2007. *Hugo Pioneers*. Map Of Federal Land Transfer in Hugo, Oregon. Hugo, OR.

Hugo Neighborhood Association & Historical Society's Mission

This information brochure is one of a series of documents published by the Hugo Neighborhood Association & Historical Society (*Hugo Neighborhood*). It is designed to be shared with neighbors for the purpose of helping protect our rural quality of life by promoting an informed citizenry in decision-making. The *Hugo Neighborhood* is an informal nonprofit charitable and educational organization with a land use and history mission of promoting the social welfare of its neighbors.

Land Use & History

The *Hugo Neighborhood's* land use mission is to promote Oregon Statewide Goal 1 — Citizen Involvement, and to preserve, protect, and enhance the livability and economic viability of its farms, forests, and rural neighbors. It will act, if requested, as a technical resource assisting neighbors to represent themselves.

Its history mission is to educate, collect, preserve, interpret, and research its local history and to encourage public interest in the history of the Hugo area.

Volunteer membership dues are \$10.00 annually per family and normally used for paper, ink, envelopes, publications and mailings. Send us your e-mail address if you want to know what we are doing.

Email: hugo@jeffnet.org

Web Page: <http://jeffnet.org/~hugo/>

Edited by Karen Rose, Wayne McKy, & Mike Walker

HNA&HS Officers

Hal Anthony, Outreach Chair
3995 Russell Road
Grants Pass, Oregon 97526

Wayne McKy, Chair
6497 Hugo Road
Grants Pass, Oregon 97526

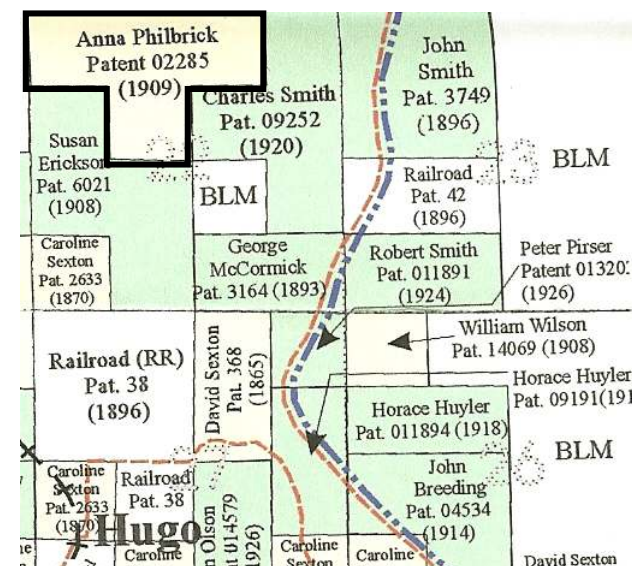
Mike Walker, Education Chair
3388B Merlin Rd #195
Grants Pass, Oregon 97526

Karen Rose, Web Master
575 Red Mountain Drive
Grants Pass, Oregon 97526

ANNA PHILBRICK FAMILY: HUGO SETTLERS



Very Draft
Brochure 319 Of Hugo's Early
Settler Brochure Series



Anna Philbrick's Hugo Cash Entry: 1909

Not Quality Controlled, Nor Edited

January 18, 2008

Hugo Neighborhood Association &
Historical Society

Brochure 319 in Hugo's Early Settler Brochure Series
HNA&HS 2007 - 319

C:\Documents and Settings\mike\My Documents\Genealogy\History_Brochures\People Settlers 1900 -
1930s\BROCHURE_319 Philbrick Anna 011808.wpd