

??

For purposes of the Hugo's Settler brochure series, an early Hugo settler includes anyone who lived, worked, or owned property there sometime from 1900 through the 1930s.

??

Born:
Birth Place:
Father's Birth Place:
Mother's Birth Place:

??

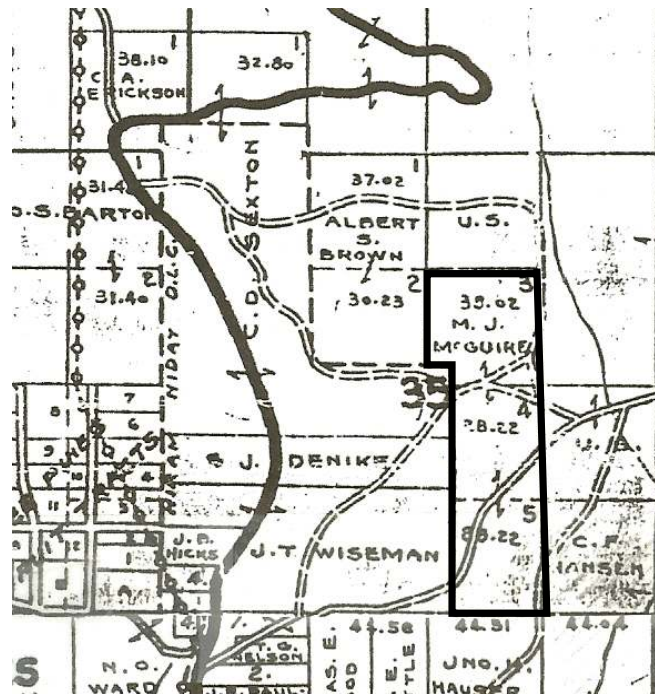
Born:
Birth Place:
Father's Birth Place:
Mother's Birth Place:

1930 Mary Galbraith's Hugo Homestead On July 23, 1930 Mary C. Galbraith was issued a homestead certificate for 94.46 acres in Hugo, Oregon (Patent No. 018450).^{1,2}

The homestead was east and adjacent to the old Niday Donation Land Claim.

The M. J. McGuire Family, Hugo Settlers: 19?? - 19??

1932 Two years after Galbraith patented her homestead it was in the possession of M. J. McGuire.³



M. J. McGuire's Hugo Tract: 1932

More Information

Want more information? Contact an officer of the *Hugo Neighborhood* on how you can become involved in your community's history and land use.

Simple ancestry search for Josephine County, Oregon 1930. No hits for M. J. McGuire. 1/31/08

1. Bureau of Land Management (BLM), General Land Office (GLO) Records. 2007. Official Federal Land Records Site (<http://www.glorerecords.blm.gov/>). Internet.
2. Hugo Neighborhood. 2007. *Hugo Pioneers*. Map Of Federal Land Transfer in Hugo, Oregon. Hugo, OR.
3. Metsher, Chas. F. 1932 *Metsker Map. Josephine County, Oregon*. Portland, OR.

Hugo Neighborhood Association & Historical Society's Mission

This information brochure is one of a series of documents published by the Hugo Neighborhood Association & Historical Society (*Hugo Neighborhood*). It is designed to be shared with neighbors for the purpose of helping protect our rural quality of life by promoting an informed citizenry in decision-making. The *Hugo Neighborhood* is an informal nonprofit charitable and educational organization with a land use and history mission of promoting the social welfare of its neighbors.

Land Use & History

The *Hugo Neighborhood's* land use mission is to promote Oregon Statewide Goal 1 — Citizen Involvement, and to preserve, protect, and enhance the livability and economic viability of its farms, forests, and rural neighbors. It will act, if requested, as a technical resource assisting neighbors to represent themselves.

Its history mission is to educate, collect, preserve, interpret, and research its local history and to encourage public interest in the history of the Hugo area.

Volunteer membership dues are \$10.00 annually per family and normally used for paper, ink, envelopes, publications and mailings. Send us your e-mail address if you want to know what we are doing.

Email: hugo@jeffnet.org

Web Page: <http://jeffnet.org/~hugo/>

Edited by Karen Rose, Wayne McKy, & Mike Walker

HNA&HS Officers

Hal Anthony, Outreach Chair
3995 Russell Road
Grants Pass, Oregon 97526

Wayne McKy, Chair
6497 Hugo Road
Grants Pass, Oregon 97526

Mike Walker, Education Chair
3388B Merlin Rd #195
Grants Pass, Oregon 97526

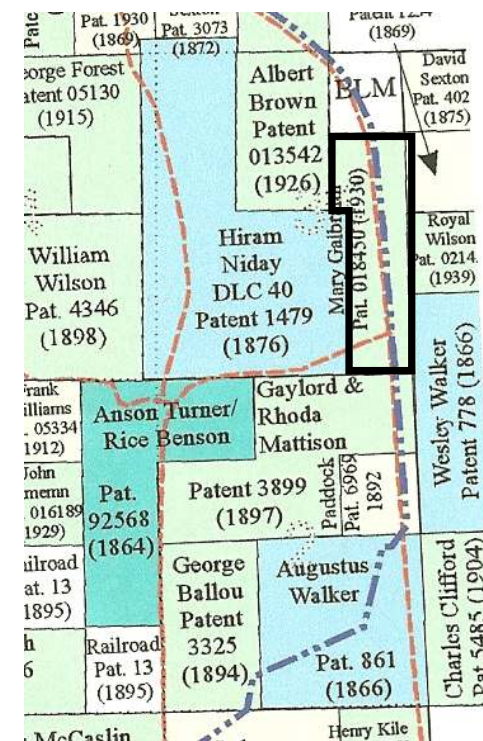
Karen Rose, Web Master
575 Red Mountain Drive
Grants Pass, Oregon 97526

Not Quality Controlled, Nor Edited

M. J. MCGUIRE FAMILY: HUGO SETTLERS



Very Draft
Brochure 273 Of Hugo's Early
Settler Brochure Series



Mary Galbraith's Hugo Homestead: 1930
Possessed By M. J. McGuire In 1932

January 31, 2008

Hugo Neighborhood Association &
Historical Society

Brochure273? in Hugo's Early Settler Brochure Series
HNA&HS 2008 - 273

C:\Documents and Settings\mike\My Documents\Genealogy\History_Brochures\People Settlers 1900 -
1930s\BROCHURE_273 McGuire MJ 013108.wpd