

??

For purposes of the Hugo's Settler brochure series, an early Hugo settler includes anyone who lived there sometime from 1900 through the 1930s.

?? McGowan

Born:
Birth Place:
Father's Birth Place:
Mother's Birth Place:

??

Born:
Birth Place:
Father's Birth Place:
Mother's Birth Place:

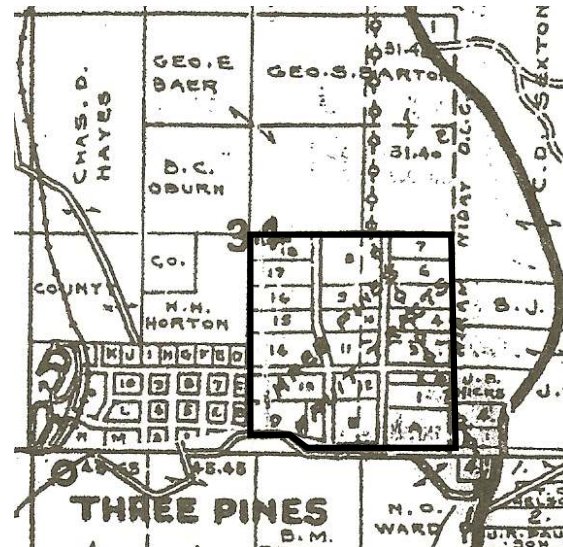
1911 Mr. McGowan is erecting a house on the land recently purchased from the Three Pines Fruit Tract company. This is the seventh building to be erected on this subdivision of the old Wilson place during the season just passed.

The McGowan Family, Hugo Settlers: 19?? - 19??

1910 Three Pines Fruit Tracts The 1910 *Fruit Tracts* subdivided the land into five acre parcels where it was advertized that one could make a good living raising fruit. It was adjacent and to the east of the Town of Three Pines.

1911 — Town of Three Pines, Oregon Platted

"Mr. McGowan is erecting a house on the land recently purchased from the Three Pines Fruit Tract company. This is the seventh building to be erected on this subdivision of the old Wilson place during the season just passed." *Rogue River Courier*. December 15, 1911. Three Pines.



Three Pines Fruit Tracts: 1932

Three Pines Fruit Tracts

1912 Three Pines was recently developed and a going concern in 1912 with over a hundred citizens; a brand new one-year old school, Three Pines Elementary; two stores; the Corliss Hotel; a post office; a planning mill that was connected by a 11.5 mile flume to the upper reaches of Jump-off Joe Creek and the lumber town of Mountain; and a railroad siding and small depot. The town was platted and there was the Three Pines Fruit Tracts just to the east. The new year was coming and the future was bright.

1917 By 1917 the Three Pines Lumber Company was in financial trouble and the town was in decline.

1932 The 1910 platted Three Pines Fruit Tracts looked the same in 1932.

Want more information? Contact an officer of the *Hugo Neighborhood* on how you can become involved in your community's history and land use.

1. Metsker, Chas. F. 1932 *Metsker Map*. Josephine County, Oregon. Portland, OR.

Simple ancestry search for Josephine County, Oregon 1910 & 1920. Does not work without a first name. 1/23/08

Hugo Neighborhood Association & Historical Society's Mission

This information brochure is one of a series of documents published by the Hugo Neighborhood Association & Historical Society (*Hugo Neighborhood*). It is designed to be shared with neighbors for the purpose of helping protect our rural quality of life by promoting an informed citizenry in decision-making. The *Hugo Neighborhood* is an informal nonprofit charitable and educational organization with a land use and history mission of promoting the social welfare of its neighbors.

Land Use & History

The *Hugo Neighborhood's* land use mission is to promote Oregon Statewide Goal 1 — Citizen Involvement, and to preserve, protect, and enhance the livability and economic viability of its farms, forests, and rural neighbors. It will act, if requested, as a technical resource assisting neighbors to represent themselves.

Its history mission is to educate, collect, preserve, interpret, and research its local history and to encourage public interest in the history of the Hugo area.

Volunteer membership dues are \$10.00 annually per family and normally used for paper, ink, envelopes, publications and mailings. Send us your e-mail address if you want to know what we are doing.

Email: hugo@jeffnet.org
Web Page: <http://www.hugoneighborhood.org/>
Edited by Jean Boling, Karen Rose,
Wayne McKy, & Mike Walker

HNA&HS Officers

Wayne McKy, Chair
6497 Hugo Road
Grants Pass, Oregon 97526

Mike Walker, Education Chair
3388B Merlin Rd #195
Grants Pass, Oregon 97526

Web Master

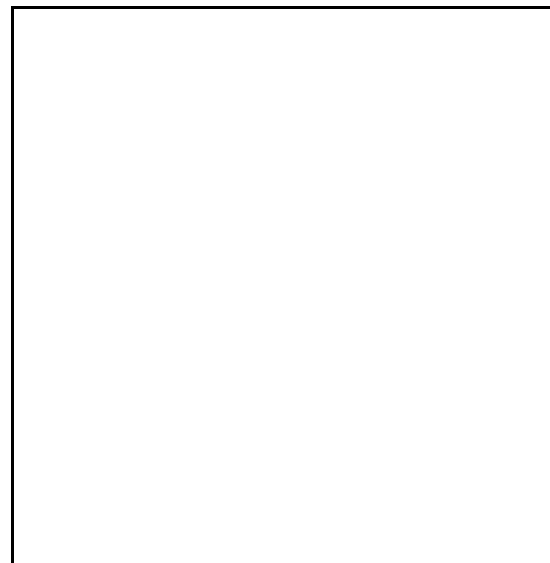
Karen Rose, Web Master
575 Red Mountain Drive
Grants Pass, Oregon 97526

Josephine County Historical Society

Jean Boling, Historic Sites Chair
214 NW Booth Street
Grants Pass, Oregon 97526

MCGOWAN FAMILY: HUGO SETTLERS

Very Draft
Brochure 272 Of Hugo's Early
Settler Brochure Series



January 31, 2008
Updated July 11, 2011

**Hugo Neighborhood Association &
Historical Society
Josephine County Historical Society**