

Gross Family From Iowa In Hugo: ca., 1870s - 1900s

1870 Census. Adel, Dallas, Iowa¹

John Gross	Farmer	OH	39 yrs
Jane Gross	Keeping House	IN	24 yrs
Minnie Gross	Daughter	IA	5 yrs
Hardie Gross	Son	IA	7/12 yrs
Etta J Gross	Daughter	IA	2 yrs

1879 - 1886 Lucky Queen Post Office Frank Niday Jr. became Postmaster of the Lucky Queen Post Office in 1879 and served in that capacity through 1886. He was also a homesteader and miner.

1880 Census. Grants Pass, Jackson Co., OR¹

John B. Gross	Gold miner	OH	35 yrs
Maria J. Gross	Keeping House	MO	33 yrs
Clara M Gross	Attending school	IA	13 yrs
Adam Gross		IA	10 yrs
Lucy Gross		OR	8 yrs
Gray (Grady?) Gross		OR	8/12 yrs



1891 John Gross's Hugo Homestead

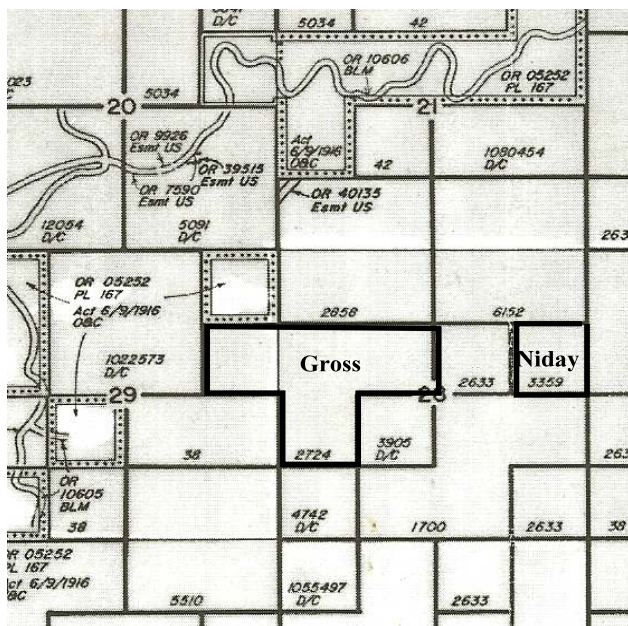
On November 3, 1891 John B. Gross was issued a homestead patent for 160 acres in Hugo, Oregon (Patent No. 2724; maps 1 & 2).²⁻³

1895 John B. Gross owned his 160 acre homestead in Hugo, Oregon in 1895.⁴

1. Boling, Jean, 2011. Census Records for Gross. Josephine County Historical Society, Grants Pass, OR.
 2. Bureau of Land Management (BLM), General Land Office (GLO) Records, 2007. Official Federal Land Records Site (<http://www.glorerecords.blm.gov/>). Internet.
 3. Hugo Neighborhood. 2007. *Hugo Pioneers*. Map Of Federal Land Transfer in Hugo, Oregon. Hugo, OR.
 4. Koch, Joseph, Draughtsman. 1895 Official Josephine County, Oregon. Map. Scale 1 inch = 1 mile. Meston - Dygert Book M'F'G. Portland, OR.
 5. Hugo Neighborhood. 2011. *Hiram "Frank" Niday (Junior): Hugo Pioneer*. Brochure 49A in Hugo's Pioneers Brochure Series. Hugo, OR.
 6. Internet. June 2011 Wolfe Mann Family Tree.

The John Gross Family: Hugo Pioneers

1895 Hugo Homestead A ¼ mile east of Gross was Hiram F. Niday Junior's 40 acre homestead which he received a patent for on March 27, 1895 in Hugo, Oregon was along the Southern Pacific Railroad (Patent No. 3359; maps 1 & 2).²⁻⁵



Map 1. Federal Transfers Of Land In Hugo, Oregon

Hiram Frances Niday & Clara Minnie Gross Wed

Clara was born in Adel, Dallas, Iowa on October 13, 1866.⁶ Hiram and Clara had four children.⁷

Helen Niday	(Caroline Sexton's Will)
Della F. Niday	October 1889
Elda M. Niday	March 1893
John H. Niday	May 1896

Daughter Clara Minnie Gross & Hiram F. Niday Jr. Wed

1899 Clara M. Niday passed in Oregon on May 24, 1899.⁵

1900 Census: Merlin Precinct, Josephine Co., OR

Hiram F. Niday	Father	46 yrs	Gold Miner
Della F. Niday	Dau	10 yrs	At School
Elda M. Niday	Dau	7 yrs	At School
John H. Niday	Son	4 yrs	

1910 The Holgate property (northern approximately 40 acres of original Gross homestead) was purchased in April 1910 by Frank C. Holgate and his wife, Mabel, of Elk, Spokane County, Washington, from Walton Jackson.⁸

1932 The Gross homestead would eventually become locally famous for its fruit orchards: Holgate ("Paradise" Hill Orchard), Randolph, and Beveridge.

1891 - 1895	John Gross
1910	Mable F. Holgate
1932	Mable F. Holgate
1932	Beveridge
1955	Matusek
1970	Mike Batinich
2009	Petrallia (sp?)

Want more information? Contact an officer of the *Hugo Neighborhood* on how you can become involved in your community's history and land use.

7. Will of Caroline Sexton. June 29, 1909. City of Grants Pass, Josephine County, OR.

8. Atwood, Kay. 1984. Josephine County Historical Resources Inventory: 1983 - 1984. Volume I. Grants Pass, OR.

Hugo Neighborhood Association & Historical Society's Mission

This information brochure is one of a series of documents published by the Hugo Neighborhood Association & Historical Society (*Hugo Neighborhood*). It is designed to be shared with neighbors for the purpose of helping protect our rural quality of life by promoting an informed citizenry in decision-making. The *Hugo Neighborhood* is an informal nonprofit charitable and educational organization with a land use and history mission of promoting the social welfare of its neighbors.

Land Use & History

The *Hugo Neighborhood's* land use mission is to promote Oregon Statewide Goal 1 — Citizen Involvement, and to preserve, protect, and enhance the livability and economic viability of its farms, forests, and rural neighbors. It will act, if requested, as a technical resource assisting neighbors to represent themselves.

Its history mission is to educate, collect, preserve, interpret, and research its local history and to encourage public interest in the history of the Hugo area.

Volunteer membership dues are \$10.00 annually per family and normally used for paper, ink, envelopes, publications and mailings. Send us your e-mail address if you want to know what we are doing.

Email: hugo@jeffnet.org

Web Page: <http://jeffnet.org/~hugo/>

Edited by Jean Boling, Karen Rose,
Wayne McKy, & Mike Walker

HNA&HS Officers

Wayne McKy, Chair
6497 Hugo Road
Grants Pass, Oregon 97526

Mike Walker, Education Chair
3388B Merlin Rd #195
Grants Pass, Oregon 97526

Web Master

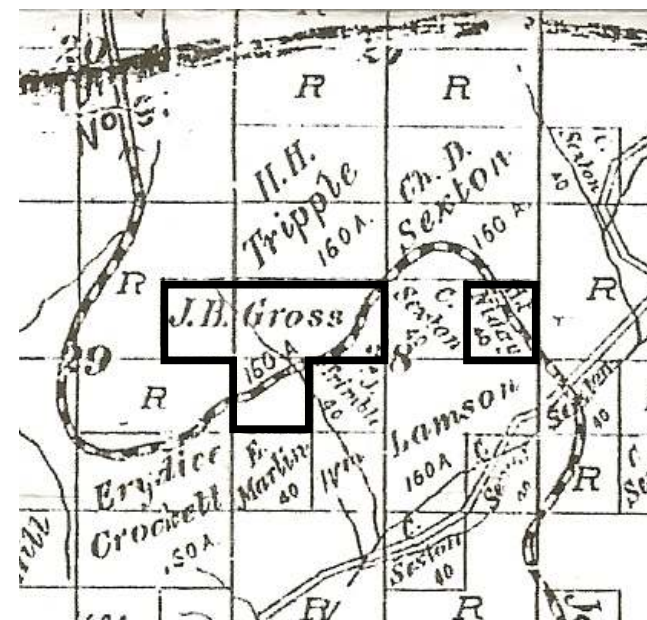
Karen Rose, Web Master
575 Red Mountain Drive
Grants Pass, Oregon 97526

Josephine County Historical Society

Jean Boling, Historic Sites Chair
Josephine County Historical Society
124 NW Booth Street
Grants Pass, Oregon 97526

JOHN GROSS FAMILY: HUGO PIONEERS

Brochure 27 in Hugo's Pioneers Brochure Series



Map 2. John Gross' Hugo Homestead: 1895

January 12, 2008
June 20, 2011

Hugo Neighborhood Association &
Historical Society
Josephine County Historical Society