

## Hugo's Early Settlers

For purposes of the Hugo's Settler brochure series, an early Hugo settler includes anyone who lived, worked, or owned property there sometime from 1900 through the 1930s.

### Charles F. Lewis

Born:  
Birth Place:  
Father's Birth Place:  
Mother's Birth Place:

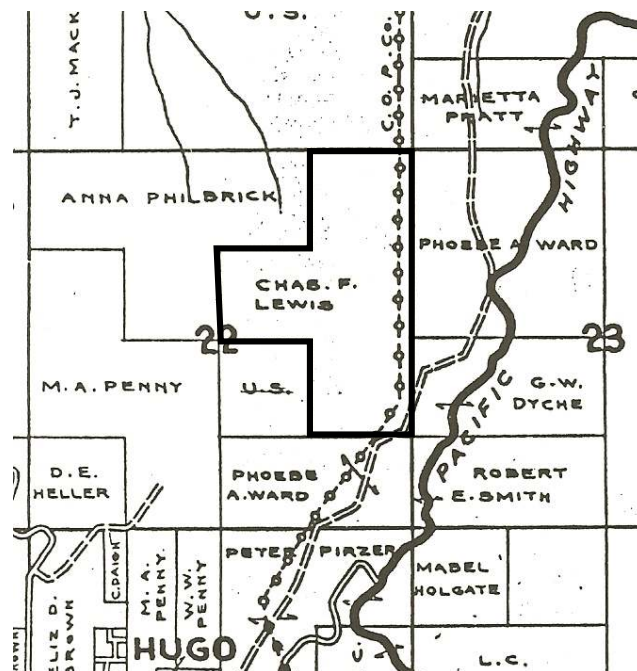
### ? Lewis

Born:  
Birth Place:  
Father's Birth Place:  
Mother's Birth Place:

**1920 Charles Smith's Hugo Homestead** On June 7, 1920 Charles Frederic Smith was issued a homestead certificate for 160 acres in Hugo, Oregon (Patent No. 09252).<sup>1-2</sup>

The homestead on high up on the ridge of the Grave Creek Hills. Mt. Sexton pass was about a quarter of a mile to the east.

## The Charles Lewis Family, Hugo Settlers: 19?? - 19??



*Charles Lewis' Hugo Tract: 1932*

## Grave Creek Hills

**1932** By 1932 Chas. F. Lewis was in possession of the old 160 acre Charles Smith's homestead in Hugo, Oregon.<sup>3</sup>

**Want more information?** Contact an officer of the *Hugo Neighborhood* on how you can become involved in your community's history and land use.

[Simple ancestry search for Josephine County, Oregon 1930 1/31/08](#)

A Charles B. Lewis lived in Medford, Oregon.  
A Charles Lewis lived in Wimer, Oregon.

1. Bureau of Land Management (BLM), General Land Office (GLO) Records. 2007. Official Federal Land Records Site (<http://www.glorerecords.blm.gov/>). Internet.  
2. Hugo Neighborhood. 2007. *Hugo Pioneers*. Map Of Federal Land Transfer in Hugo, Oregon. Hugo, OR.  
3. Metsker, Chas. F. 1932 *Metsker Map*. Josephine County, Oregon. Portland, OR.

## Hugo Neighborhood Association & Historical Society's Mission

This information brochure is one of a series of documents published by the Hugo Neighborhood Association & Historical Society (*Hugo Neighborhood*). It is designed to be shared with neighbors for the purpose of helping protect our rural quality of life by promoting an informed citizenry in decision-making. The *Hugo Neighborhood* is an informal nonprofit charitable and educational organization with a land use and history mission of promoting the social welfare of its neighbors.

### Land Use & History

The *Hugo Neighborhood's* land use mission is to promote Oregon Statewide Goal 1 — Citizen Involvement, and to preserve, protect, and enhance the livability and economic viability of its farms, forests, and rural neighbors. It will act, if requested, as a technical resource assisting neighbors to represent themselves.

Its history mission is to educate, collect, preserve, interpret, and research its local history and to encourage public interest in the history of the Hugo area.

Volunteer membership dues are \$10.00 annually per family and normally used for paper, ink, envelopes, publications and mailings. Send us your e-mail address if you want to know what we are doing.

Email: [hugo@jeffnet.org](mailto:hugo@jeffnet.org)

Web Page: <http://jeffnet.org/~hugo/>

Edited by Karen Rose, Wayne McKy, & Mike Walker

### HNA&HS Officers

Hal Anthony, Outreach Chair  
3995 Russell Road  
Grants Pass, Oregon 97526

Wayne McKy, Chair  
6497 Hugo Road  
Grants Pass, Oregon 97526

Mike Walker, Education Chair  
3388B Merlin Rd #195  
Grants Pass, Oregon 97526

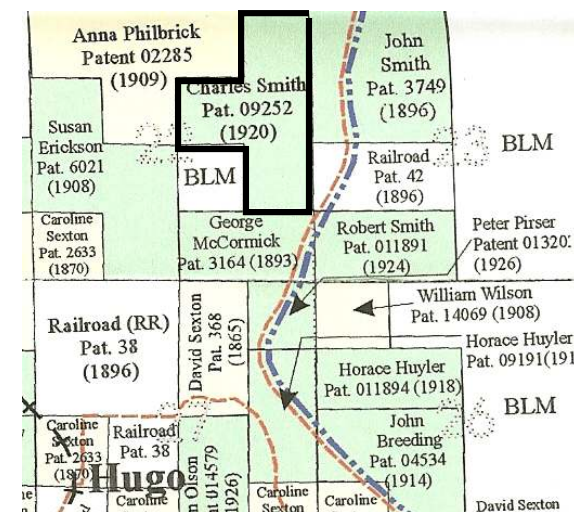
Karen Rose, Web Master  
575 Red Mountain Drive  
Grants Pass, Oregon 97526

Not Quality Controlled, Nor Edited

# CHARLES LEWIS FAMILY: HUGO SETTLERS



Very Draft  
Brochure 245 Of Hugo's Early  
Settler Brochure Series



Charles Smith's Hugo Homestead: 1920  
Charles Lewis Owned Homestead In 1932

January 31, 2008

Hugo Neighborhood Association &  
Historical Society

Brochure 245 in Hugo's Early Settler Brochure Series  
HNA&HS 2008 - 245

C:\Documents and Settings\mike\My Documents\Genealogy\History\_Brochures\People Settlers 1900 -  
1930s\BROCHURE\_245 Lewis Charles 013108.wpd