

## Jacksonville Road (JR) Of Applegate Trail (Trail): Salmon Creek (JA-18A)<sup>1</sup>

**Hugo's Jacksonville Road (JA) from Willamette Valley to Jacksonville** (route of the Applegate Trail) is located in Josephine County, Oregon from Rogue River in the south to Salmon Creek in the north.<sup>2</sup>

### SALMON CREEK

**POI Name** Salmon Creek<sup>3</sup> ■ JA-18A.

**POI ID Code** OR-AT-00-33-06-S35-JA-18.

**1855 GLO Survey Notes for POI** Page 22. Exterior Lines of T.33S., R.6W. S89° 45' W [West] on South boundary of Sec 35, Var 18" 25'E.

### Chains

28.30 Branch at foot of hill 6 Lks [links] wide c [course] South. [One link = 7.92"; Salmon Creek was 6 links wide = 47.52" = 3.96']

**30.75 Road from Willamette To Rogue River Valley** c S10°W N10° W. [30.75 chains = 2,029.5']

36.00 **Pack trail** c N & S [36 chains = 2,376']

80.00 Set Post Cor to Section 2, 3, 34, & 35 on S. W. Slope [80.00 chains = 5,280']

**Latitude & Longitude POI Calculated**<sup>3</sup> Need QC

42° 39' 09.10" North Latitude

123° 22' 24.29" West Longitude

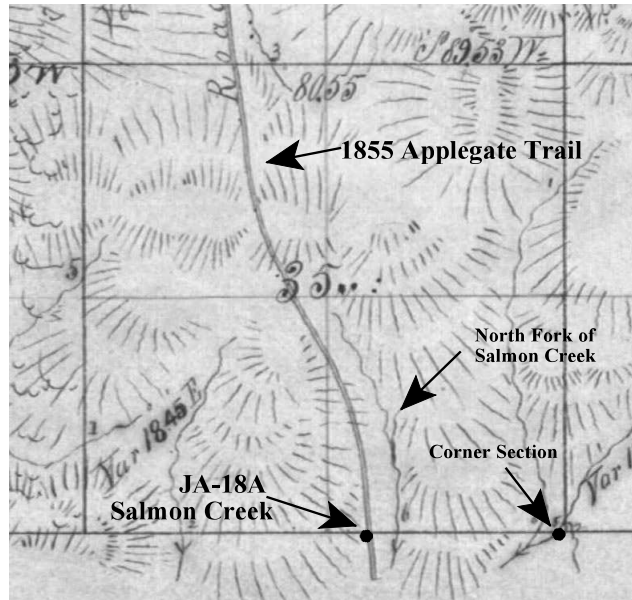
**POI Located With GPS/C.S./Interpretative Sign**

Not yet; with permission.

**Corner Section** for Sections 35, 36, 1, & 2 to east of JA-18 2,029.5'.

1. Hugo Neighborhood. 2009 *Hugo's Applegate Trail GLO Points of Interest. Brochure 1* in Applegate Trail GLO Surveys Series. Hugo, OR.  
2. Hugo Neighborhood. 2009 *Hugo's Jacksonville Road Of Applegate Trail Points of Interest. Brochure.*

## Diaries, Journals, & Reminiscences<sup>1</sup>



*GLO Survey & Map for JA-18A: 1855*

**Private Property/Stakeholders** 1. Brian Hawkins: 55.1 ac, Tax Lot 201, Section 2, T.34S., R.6W., W.M.  
2. Perpetua Forests Company: 319.71 ac, Tax Lot 200, Section 35, T.33S., R.6W., W.M.

**JA-18 In Vicinity of C.O.P. Co.** (Pacific Power & Light) Transmission Line No. 21 is west of Salmon Creek. Line No. 40 is east of Salmon Creek.

**Be Respectful** *Do not trespass. JA-18A is located on private property not open to the public.*

2 in Applegate Trail GLO Surveys Series. Hugo, OR.  
3. 1856 General Land Office Field Survey Sub-Committee, Hugo Emigrant Trails Committee, Hugo Neighborhood Association & Historical Society. February 10, 2006. *General Land Office Field Survey Notes: Hugo's Applegate Trail Segments.* Hugo, OR

## General Land Office (GLO) & Josephine County Surveys (C.S.) & Maps<sup>1</sup>

**OCTA Trail Classification** Class ③ Verified Trail, or Class ④ Altered and Verified Trail.<sup>4</sup>

**Coherence Rule** Linear Uniformity. Yes

**Corroborative Rule** Confirming Evidence. Yes

**Collateral Rule** Physical/Topo Evidence. No

**Correlation Rule** Overall Agreement. Yes



*Pacific Highway  
Along Salmon Creek: 1925*

**More Information** Contact a member of the Hugo Emigrant Trails Committee.

## Hugo Emigrant Trails Committee

Hugo is blessed with a rich heritage of historic roads, rough though they were. The *Hugo Emigrant Trails Committee* was formed to bring together all those who want to learn more about the early transportation in the area, from the casual admirer to the dedicated researcher. Its aim is to collect and record information about Hugo's emigrant trails, especially its two historic 1850s General Land Office mapped roads, and to share this information (e.g., through *Hugo History Day*, talks, hikes, group visits, training exercises, workshops, publications, web sites, etc.).

Karen Rose, Co-Project Leader  
Mike Walker, Co-Project Leader

### *Diaries, Journals & Reminiscences SubCommittee*

Jean Boling  
Glen Campbell  
Janet McKy  
Joe Neiderheiser  
Leta Neiderheiser  
Berneata Rarey  
Kelly Rarey  
Karen Rose  
Mike Walker

### *General Land Office Field Survey SubCommittee*

Glen Campbell  
Blalock Terall  
Jim Ford  
Rene Ford  
Joe Neiderheiser  
Kelly Rarey  
Mike Walker  
Chris Wytcherley

## Hugo Neighborhood Association & Historical Society's Mission

This information brochure is one of a series of documents published by the Hugo Neighborhood Association & Historical Society (*Hugo Neighborhood*). It is designed to be shared with neighbors for the purpose of helping protect our rural quality of life by promoting an informed citizenry in decision-making. The *Hugo Neighborhood* is an informal nonprofit charitable and educational organization with a land use and history mission of promoting the social welfare of its neighbors.

### Land Use & History

The *Hugo Neighborhood's* land use mission is to promote Oregon Statewide Goal 1 — Citizen Involvement, and to preserve, protect, and enhance the livability and economic viability of its farms, forests, and rural neighbors. It will act, if requested, as a technical resource assisting neighbors to represent themselves.

Its history mission is to educate, collect, preserve, interpret, and research its local history and to encourage public interest in the history of the Hugo area. Volunteer membership dues are \$10.00 annually per family and normally used for paper, ink, envelopes, publications and mailings.

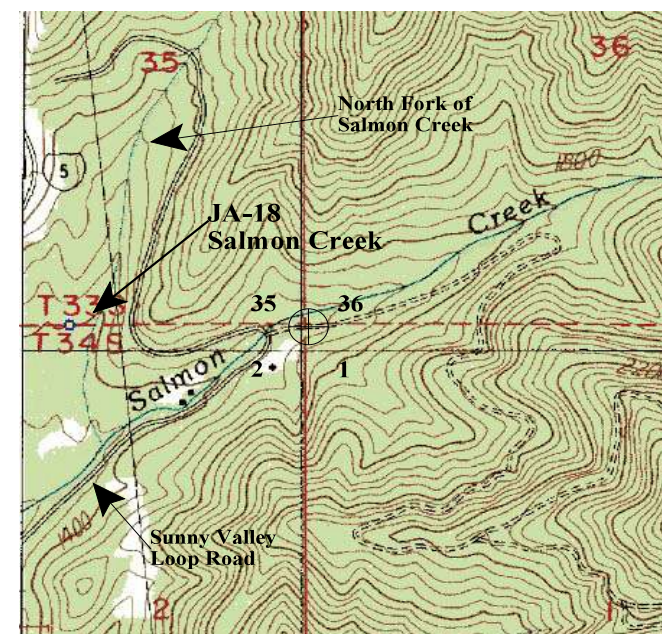
*Hugo Neighborhood*  
3388B Merlin Rd # 195, Grants Pass, Oregon 97526  
541-471-8271  
Email: hugo@jeffnet.org

Edited by Jean Boling, Kelly Rarey,  
Karen Rose, & Mike Walker

## JR Of Applegate Trail: Salmon Creek (JA-18A)



Brochure 22A of Applegate Trail GLO  
Surveys Brochure Series



Corner Section (35, 36, 1, & 2) East of JA-18A

July 21, 2010  
Updated July 13, 2012

**Hugo Emigrant Trails Committee  
Hugo Neighborhood Association &  
Historical Society  
Josephine County Historical Society**