

## Jacksonville Road (JR) Of Applegate Trail (Trail): Evolved Road (JA-17J)<sup>1</sup>

**Hugo's Jacksonville Road (JA) from Willamette Valley to Jacksonville** (route of the *Trail*) is located in Josephine County, Oregon from the Rogue River in the south to Grave Creek in the north.<sup>2</sup>

### GRAVE CREEK ROAD JA-17B

**1855 GLO Survey Notes for POI** Page 600. Subdivisions of T. 34 S., R. 6 W. S89°50, W [West] on True Line between sections 2 & 11.<sup>3</sup>

#### Chains

**47.40 Jacksonville Road** c N&S [3,128.4']

**48.15 Leave Road**

**1856 GLO T. 34 S., R. 6 W., W.M. MAP** The 1856 GLO map is based on the 1855 GLO survey notes.

**Private Ownership** The difference between the early *Trail* location (between 1855 JA-17B<sup>4</sup>, 1857 JA-17C<sup>5</sup>, & 1857 JA-17D<sup>6</sup>) and its later evolution to today's Sunny Valley Road (SVR) is consistent with many other road segments (e.g., Oxyoke Road, Highland Avenue at Harris Creek, Donaldson Road, Monument Drive away from Schoolhouse Creek, etc.) which moved from the wet, muddy, winter bottom lands to the drier toe of slopes.

### Interpretative Sign; Metal Detection Work

Not yet; with permission.

1. Hugo Neighborhood. 2009 *Hugo's Applegate Trail GLO Points of Interest*. Brochure 1 in Applegate Trail GLO Surveys Series. Hugo, OR.

2. Hugo Neighborhood. 2009 *Hugo's Jacksonville Road Of Applegate Trail Points of Interest*. Brochure 2 in Applegate Trail GLO Surveys Series. Hugo, OR.

3. 1856 General Land Office Field Survey Sub-Committee, Hugo Emigrant Trails Committee, Hugo Neighborhood Association & Historical Society. February 10, 2006. *General Land Office Field Survey Notes: Hugo's Applegate Trail Segments*. Hugo, OR.

## JA-17J: Evolved JR Trail/Road: ca., 1881 - 1890

### TWOGOOD DLC SURVEY JA-17C

**POI Name** Twogood DLC Survey ■ JA-17C.

**POI ID Code** OR-AT-00-34-06-n/a-n/a-JA-17C

**1857 DLC Survey Notes for C 37 POI** Pages 341-342. C 37, T. 34 S., R. 6 W., W.M.

**James H. Twogood DLC Notification No 690**

### East on north boundary of C 37

#### Chains/Links

**8/00 Road to Umpqua Valley course N & S**

**West on south boundary of C 37** [there were no surveyed DLC notes for a road on south boundary of C 37; JA-17D location was calculated from 1856 GLO map and the 1857 DLC survey]

**Covered Bridge** It is assumed that the original Grave Creek Bridge was built ca., 1881 - 1890 (*First There Was Twogood*), and that its location is the location of the present Grave Creek Covered Bridge built in 1920.

**Josephine County Tax Lot Map** Although not surveyed, assumptions about the Grave Creek Bridge and the evolution of roads away from muddy bottom lands place JA-17J in the SVR in front of the Applegate Trail Interpretive Center Museum in Sunny Valley, Oregon.

**Stakeholders** Double Diamond, Inc., c/o Betty Gaustad, ??? acres (TL1901 & 1902, Sec 11, T.34 S., R.6W., W.M.).

4 - 6. JR Of Applegate Trail: Grave Creek Road (JA-17B) & JR Of Applegate Trail: Twogood DLC Survey (JA-17C) at web page

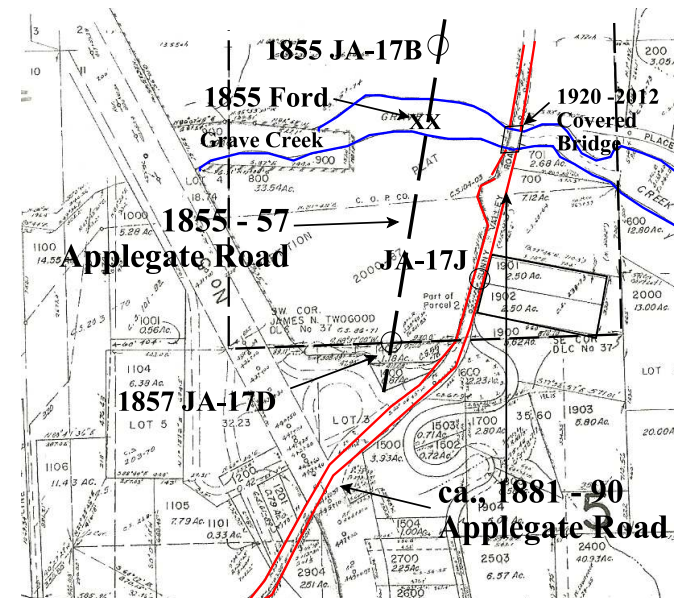
<http://www.hugoneighborhood.org/inventorybrochures.htm>

7. Oregon-California Trails Association (OCTA). July 2002, Mapping Emigrant Trails MET Manual. Fourth Edition. Independence, MO.

## General Land Office (GLO) & Donation Land Claim (DLC) Surveys & Maps<sup>1</sup>

OCTA Trail Classification for JA-17J Class ⑤  
Approximate Trail.<sup>7</sup>

**Coherence Rule** Linear Uniformity. No  
**Corroborative Rule** Confirming Evidence. No  
**Collateral Rule** Physical/Topo Evidence. No  
**Correlation Rule** Overall Agreement. No



**Be Respectful** Do not trespass. JA-17J is located on private property with public access during business hours. (Betty Gaustad?)

**Want more information?** Contact a member of the Hugo Emigrant Trails Committee.

## Hugo Emigrant Trails Committee

Hugo is blessed with a rich heritage of historic roads, rough though they were. The *Hugo Emigrant Trails Committee* was formed to bring together all those who want to learn more about the early transportation in the area, from the casual admirer to the dedicated researcher. Its aim is to collect and record information about Hugo's emigrant trails, especially its two historic 1850s General Land Office mapped roads of the Applegate Trail, and to share this information (e.g., through *Hugo History Day*, talks, hikes, group visits, training exercises, workshops, publications, web sites, etc.).

Karen Rose, Co-Project Leader  
Mike Walker, Co-Project Leader

### *Diaries, Journals & Reminiscences SubCommittee*

Jean Boling  
Glen Campbell  
Janet McKy  
Joe Neiderheiser  
Leta Neiderheiser  
Berneata Rarey  
Kelly Rarey  
Karen Rose  
Mike Walker

### *General Land Office Field Survey SubCommittee*

Glen Campbell  
Blalock Terall  
Jim Ford  
Rene Ford  
Joe Neiderheiser  
Kelly Rarey  
Mike Walker  
Chris Wytcherley

## Hugo Neighborhood Association & Historical Society's Mission

This information brochure is one of a series of documents published by the Hugo Neighborhood Association & Historical Society (*Hugo Neighborhood*). It is designed to be shared with neighbors for the purpose of helping protect our rural quality of life by promoting an informed citizenry in decision-making. The *Hugo Neighborhood* is an informal nonprofit charitable and educational organization with a land use and history mission of promoting the social welfare of its neighbors.

### Land Use & History

The *Hugo Neighborhood's* land use mission is to promote Oregon Statewide Goal 1 — Citizen Involvement, and to preserve, protect, and enhance the livability and economic viability of its farms, forests, and rural neighbors. It will act, if requested, as a technical resource assisting neighbors to represent themselves.

Its history mission is to educate, collect, preserve, interpret, and research its local history and to encourage public interest in the history of the Hugo area. Volunteer membership dues are \$10.00 annually per family and normally used for paper, ink, envelopes, publications and mailings.

### *Hugo Neighborhood*

3388B Merlin Rd # 195, Grants Pass, Oregon 97526  
541-471-8271; Email: hugo@jeffnet.org

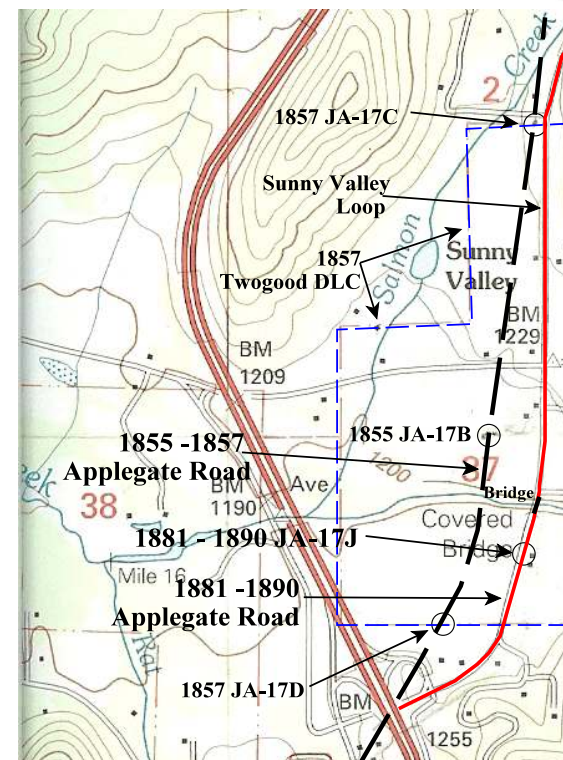
Web Page: <http://www.hugoneighborhood.org/>

Edited and approved for HETC by Jean Boling, (07/09/12),  
Jim & Rene Ford (07/16/12), Joe Neiderheiser (07/16 &  
19/12) Karen Rose (07/13/12), and Mike Walker  
(07/07/12)

## JR Of Applegate Trail: Evolved Road: ca., 1881 - 1890 (JA-17J Site)



Draft Under Review  
Brochure 21J of Applegate Trail Grave  
Creek Project Brochure Series



July 16, 2012; Updated July 19, 2012

Hugo Emigrant Trails Committee  
Hugo Neighborhood Association &  
Historical Society  
Josephine County Historical Society  
Applegate Trail Interpretive Center  
Museum?