
Jacksonville Road (JR) Of Applegate Trail (*Trail*): Grave Creek Road (JA-16B)¹

Hugo's Jacksonville Road (JA) from Willamette Valley to Jacksonville (route of the *Trail*) is located in Josephine County, Oregon from the Rogue River in the south to Grave Creek in the north.¹⁻²

Henry Garrison, 1846 Young Henry Garrison, son of Rev. A. Garrison, was with the Pringle company.³

“The night we camped at rocky point, an Indian shot Miss Leland Crowley with a poisoned arrow, Miss Crowley was sitting by the fire baking bread when shot, the Indian must {have} shot from the Mountain side which was close by, as we had out a stray guard. The arrow was extracted, but no precautions were taken in regard to poison as we did not know at the time that poisoned arrows was used.” (page 22).

The South Road, 1846⁴ Miss Martha Leland Crowley was one of the most beautiful and popular young ladies of the 1846 emigration. She became severely ill with typhoid fever and **died as the wagon she was riding in descended from Sexton Mountain.** The wagon she died in stopped and those behind could not pass. (page 185)

Those ahead kept traveling because they did not know what had happened. The wagon train broke into two parts. **The broken wagon train got itself together a few miles down the road and camped. The next morning they moved on about one mile and crossed Grave Creek.** Miss Martha Leland Crowley was buried near the crossing (pages 185 - 186). (emphasis added) A “few miles” is general and might be anything from over 1 to a small number (i.e., 1 - 2 miles).

Martha Leland Crowley Died In Upper Rat Creek: October 18, 1846¹

Capt. Levi Scott's Reminiscences, 1846 Three days from here we struck the head of a small branch running into Grave Creek which we followed down to its junction, through heavy timber and thick bushes. **As we came down this branch Miss Leland Crowley died.** The wagon which the sick girl lay stopped while she was dying, and those in behind could not pass in the twilight of the evening.

This circumstance, perhaps, caused the Indians who were constantly skulking in the woods near us to become more bold and to venture upon us more closely. They shot one of the oxen of Virgil K. Pringle as it stood in the team with an arrow, wounding it so that the animal soon died.

When Miss Crowley was dead, the rear part of the train moved on again, and came into its place in the camp after dark.

Virgil Pringle's Diary: 1846⁶ *Monday, October 19 – Move one mile to a camp* [Grave Creek], *having none last night, and spent the day burying Mr. Crowley's daughter, who died yesterday evening, age about 14 years. I mile.* (emphasis added) Pringle's one mile statement is considered accurate.

1. Hugo Neighborhood. 2009 *Hugo's Applegate Trail GLO Points of Interest*. Brochure 1 in Applegate Trail GLO Surveys Series. Hugo, OR.

2. Hugo Neighborhood. 2009 *Hugo's Jacksonville Road Of Applegate Trail Points of Interest*. Brochure 2 in Applegate Trail GLO Surveys Series. Hugo, OR.

3. Garrison, A. Henry. *Reminiscences of A. H. Garrison, His Early life, Across the Plains And Of Oregon from 1846 – 1903*, Oregon Historical Society manuscript 874, 1906.

4. Davis, Charles George. 2001. *The South Road, And The Route Across Southern Oregon*. Page 185. North Plains.

5. Collins, James Layton. 1967. (Edited and Amplified). *Capt. Levi Scott*. pages 193 - 194. Sitka, AK.

Diaries, Journals, & Reminiscences¹

Talbot Carter's Reminiscences, 1846⁷ *“Soon a wagon appeared, with weeping and lamentation among its occupants. It was soon learned that an estimable young lady by the name of Crowley, who had been afflicted with typhoid fever, had died.... When morning came we found we were a few hundred yards from a small stream”* [Rat Creek]

SUMMARY It is about 2.5 - 2.8 miles from the top of Sexton Mountain Pass to just north of Grave Creek.

Sunday, October 18. Crowley died descending from Sexton Mountain Pass in the upper reaches of Rat Creek south of the JA-15, perhaps along the 1,060' Segment of “Applegate Trail I For North Sexton Pass I-5 East”⁸ (JA-15B) (Map 1).

Sunday, October 18. Move a “few miles” (i.e., 1 - 2 miles) and camp in the south end of a prairie a few hundred yards from Rat Creek just north of the JA-16, Old Stage Road *Trail* site.

Monday, October 19. Move 1 mile and camp just north of Grave Creek and buried Crowley near the JA-17B, Grave Creek Road *Trail* site.

Be Respectful *Do not trespass. The approximate 1846 location Crowley died is on public property.*

Want more information? Contact a member of the Hugo Emigrant Trails Committee.

6. Virgil Pringle's Diary, 1846. Hugo Neighborhood web page: http://www.hugoneighborhood.org/Virgil_Pringle_Diary.pdf

7. Talbot Carter Reminiscences, 1846. Hugo Neighborhood web page: http://www.hugoneighborhood.org/Experiences_of_Emigrants.pdf.

8. Boling, Rarey, Rose, & Walker. February 22, 2012. *Telegraph Lines and Applegate Trail at Smith Hill Pass*. For Hugo Neighborhood Association & Historical Society & Josephine County Historical Society. Hugo, OR.

Hugo Emigrant Trails Committee

Hugo is blessed with a rich heritage of historic roads, rough though they were. The *Hugo Emigrant Trails Committee* was formed to bring together all those who want to learn more about the early transportation in the area, from the casual admirer to the dedicated researcher. Its aim is to collect and record information about Hugo's emigrant trails, especially its two historic 1850s General Land Office mapped roads of the Applegate Trail, and to share this information (e.g., through *Hugo History Day*, talks, hikes, group visits, training exercises, workshops, publications, web sites, etc.).

Karen Rose, Co-Project Leader
Mike Walker, Co-Project Leader

Diaries, Journals & Reminiscences SubCommittee

Jean Boling
Glen Campbell
Janet McKy
Joe Neiderheiser
Leta Neiderheiser
Berneata Rarey
Kelly Rarey
Karen Rose
Mike Walker

General Land Office Field Survey SubCommittee

Glen Campbell
Blalock Terall
Jim Ford
Rene Ford
Joe Neiderheiser
Kelly Rarey
Mike Walker
Chris Wytcherley

Hugo Neighborhood Association & Historical Society's Mission

This information brochure is one of a series of documents published by the Hugo Neighborhood Association & Historical Society (*Hugo Neighborhood*). It is designed to be shared with neighbors for the purpose of helping protect our rural quality of life by promoting an informed citizenry in decision-making. The *Hugo Neighborhood* is an informal nonprofit charitable and educational organization with a land use and history mission of promoting the social welfare of its neighbors.

Land Use & History

The *Hugo Neighborhood's* land use mission is to promote Oregon Statewide Goal 1 — Citizen Involvement, and to preserve, protect, and enhance the livability and economic viability of its farms, forests, and rural neighbors. It will act, if requested, as a technical resource assisting neighbors to represent themselves.

Its history mission is to educate, collect, preserve, interpret, and research its local history and to encourage public interest in the history of the Hugo area. Volunteer membership dues are \$10.00 annually per family and normally used for paper, ink, envelopes, publications and mailings.

Hugo Neighborhood

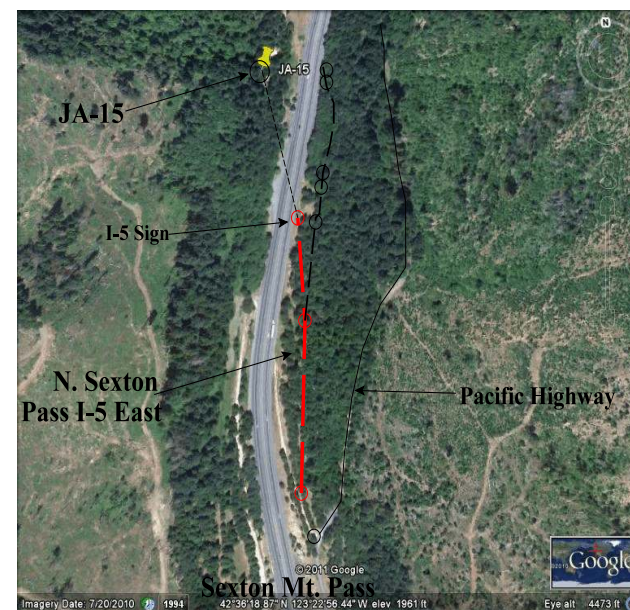
3388B Merlin Rd # 195, Grants Pass, Oregon 97526
541-471-8271; Email: hugo@jeffnet.org
Web Page: <http://www.hugoneighborhood.org/>

Edited and approved for HETC by Jean Boling,
Jim & Rene Ford, Joe Neiderheiser,
Karen Rose, and Mike Walker.

Martha Leland Crowley Died In Upper Rat Creek: Oct. 18, 1846 (JA-16B Site)



Brochure 20B of Applegate Trail
Grave Creek Project Brochure Series



**Photo 1. Possible 1846 Location Crowley Died:
1,060' Segment of "Applegate Trail I
For North Sexton Pass I-5 East"**

July 16, 2012; Updated July 19, 2012

**Hugo Emigrant Trails Committee
Hugo Neighborhood Association &
Historical Society
Josephine County Historical Society**