

## Hugo's Pioneers

### Wood

Born:  
Birth Place:  
Father's Birth Place:  
Mother's Birth Place:



### Feree

Born:  
Birth Place:  
Father's Birth Place:  
Mother's Birth Place:

### Robertshaw

Born:  
Birth Place:  
Father's Birth Place:  
Mother's Birth Place:

1. Bureau of Land Management (BLM), General Land Office (GLO) Records. 2007. Official Federal Land Records Site (<http://www.glorerecords.blm.gov/>). Internet.
2. Hugo Neighborhood. 2007. *Hugo Pioneers*. Map Of Federal Land Transfer in Hugo, Oregon. Hugo, OR.
3. Koch, Joseph , Draughtsman. 1895 Official Josephine County, Oregon. Map. Scale 1 inch = 1 mile. Meston - Dygert Book M'F'G. Portland, OR.
4. U.S.G.S. 1998. *Merlin, OR 1998*. Merlin Quadrangle: 7.5 minute topographic series, scale 1:24,000, and contour interval 40 feet. Denver, CO.

Census Research conducted resulted in no information on a Wood, Feree, or Robertshaw in Josephine County, Oregon. However, without the 1890 census data, these folks could have been here for years, and then moved on.

## The Wood, Feree, & Robertshaw, Hugo Pioneers: ca., 1880s - 1890s

**1885 Trimble Homestead** In 1885 Clementina Trimble was issued a homestead patent for 171.66 acres in the lower Bummer Creek drainage Hugo, Oregon (Patent No. 1781).<sup>1-2</sup>

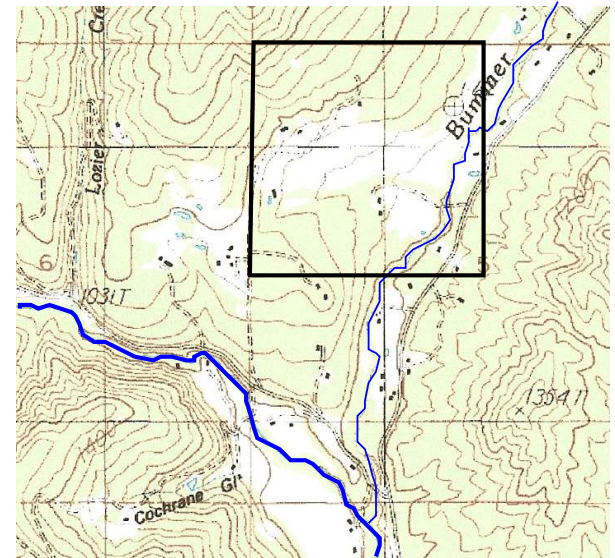
**1895** At some point Trimble sold her homestead and by 1895 it was owned by Wood Feree and Robertshaw.<sup>3</sup>



**Wood Feree's 160 Acre Ranch: 1895**

## Bummer Creek Ranch

**1998** The 1998 USGS topographic Merlin Quadrangle map covers the old Trimble Homestead and Wood Feree Ranch.<sup>4</sup>



**Old Trimble Homestead: 1885;  
Wood Feree Ranch: 1895; &  
On Modern Topographic Map: 1998**

**Want more information?** Contact an officer of the *Hugo Neighborhood* on how you can become involved in your community's history and land use.

## Hugo Neighborhood Association & Historical Society's Mission

This information brochure is one of a series of documents published by the Hugo Neighborhood Association & Historical Society (*Hugo Neighborhood*). It is designed to be shared with neighbors for the purpose of helping protect our rural quality of life by promoting an informed citizenry in decision-making. The *Hugo Neighborhood* is an informal nonprofit charitable and educational organization with a land use and history mission of promoting the social welfare of its neighbors.

### Land Use & History

The *Hugo Neighborhood's* land use mission is to promote Oregon Statewide Goal 1 — Citizen Involvement, and to preserve, protect, and enhance the livability and economic viability of its farms, forests, and rural neighbors. It will act, if requested, as a technical resource assisting neighbors to represent themselves.

Its history mission is to educate, collect, preserve, interpret, and research its local history and to encourage public interest in the history of the Hugo area.

Volunteer membership dues are \$10.00 annually per family and normally used for paper, ink, envelopes, publications and mailings. Send us your e-mail address if you want to know what we are doing.

Email: [hugo@jeffnet.org](mailto:hugo@jeffnet.org)  
 Web Page: <http://jeffnet.org/~hugo/>  
 Edited by Jean Boling, Karen Rose,  
 Wayne McKy, & Mike Walker

### HNA&HS Officers

Wayne McKy, Chair  
 6497 Hugo Road  
 Grants Pass, Oregon 97526

Mike Walker, Education Chair  
 3388B Merlin Rd #195  
 Grants Pass, Oregon 97526

### Web Master

Karen Rose, Web Master  
 575 Red Mountain Drive  
 Grants Pass, Oregon 97526

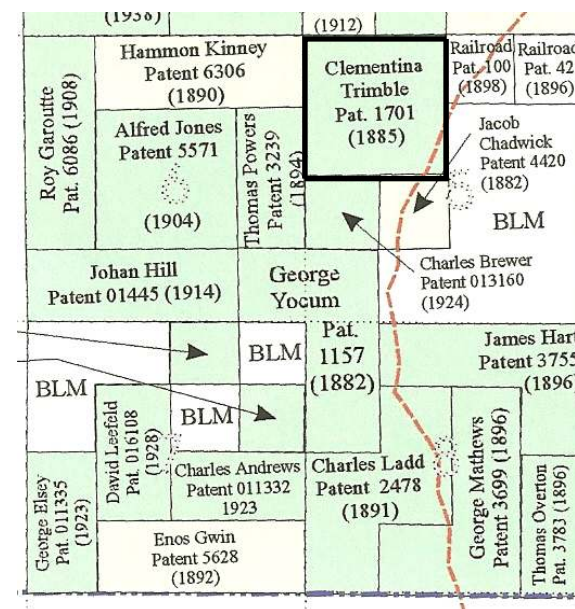
### Josephine County Historical Society

Jean Boling, Historic Sites Chair  
 Josephine County Historical Society  
 124 NW Booth Street  
 Grants Pass, Oregon 97526

# WOOD, FEREE, & ROBERTSHAW: HUGO PIONEERS

Draft

Brochure 20 in Hugo's Pioneers Brochure Series



*Clementina Trimble Homestead: 1885*

Not Quality Controlled, Nor Edited

June 9, 2008  
 Updated July 2, 2011

Hugo Neighborhood Association &  
 Historical Society  
 Josephine County Historical Society