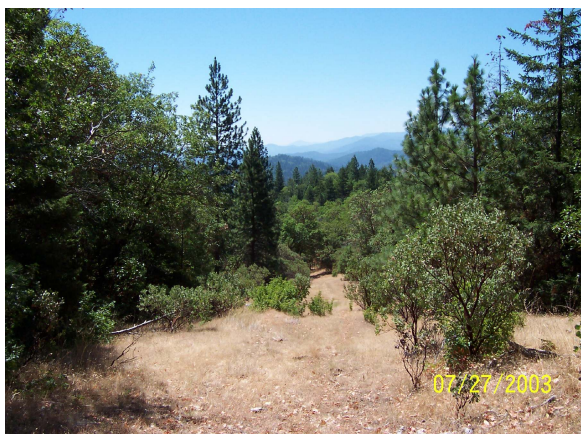


Applegate Trail: Boldway Property

The *Hugo Emigrant Trails Committee (Trails Committee)* was formed to bring together all those who want to learn more about the early transportation in the area, from the casual admirer to the dedicated researcher.¹

On July 21, 2003 six volunteers set out to inventory the Boldway Property for traces of the Applegate Trail on the south slope of the Grave Creek Hills: Hal Anthony, Malcolm Drake, Wayne McKy, Boyd Peters, Karen Rose, and Mike Walker.



Applegate Trail: Altered Class 4 Segment ④
From Logging Road
OR-JA-00-34-06-22-Boldway Property at A14.

Do you own property where one of our two 1856 roads once passed? Would you like to know more about their history?

Wagon Trail Inventory - OR- JA-00-34-06-22-Boldway Property

The Boldway Property was inventoried before being aware of the Oregon-California Trails Association's "Mapping Emigrant Trails" standards.² The group found several trail segments in the general locations identified by the 1856 and 1894 Government Land Office (GLO) maps and a 1895 county map.

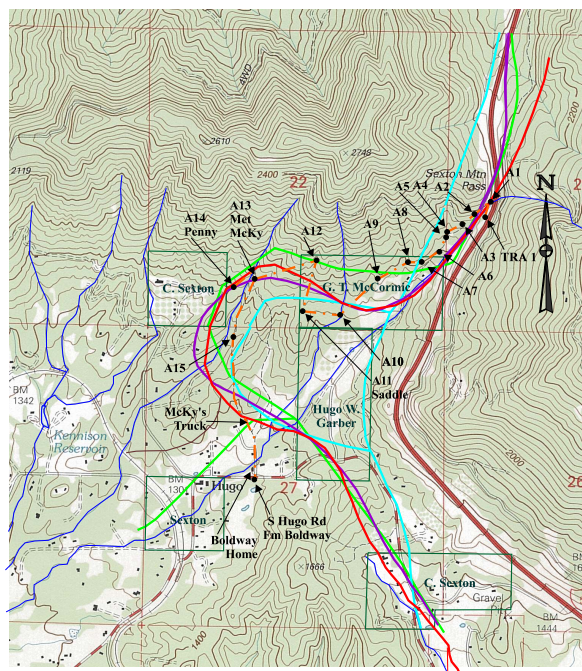
Applegate Trail Field Trip July 21, 2003

Hugo Neighborhood
Association &
Historical Society

1856 Road ————
1894 Road ————
1895 Road ————
1995 Atlas ————



07/21/03
Field Trip



More Information

In a general sense all the maps agreed. The 1995 atlas map showed the ox bow and its cut-off. The property had been extensively logged several times and except for one segment it was difficult to determine if the group was on the original Applegate Trail.

The exception was a location identified as "GPS A-14 Penny" on the 7.5 minute topographic quad. At this location the 1856, 1894, and 1895 maps were nearly overlapping. Traveling north it was an ascending ridge, and it was the location of the old ca., 1910 Penny home (etc., myrtle, lilac, water ditch, flat-level house site just next to an old logging road, etc.).



In conclusion,
more work
needs to be
done by the
*Trails
Committee*

using the OCTA mapping standards (e.g., artifact search, review GLO field notes, field review by OCTA representatives, etc.).² An interim trail classification of Class 3 ③ or Class 4 ④ was recommended for GPS A-14 Penny of OR-JA-00-34-06-22-Boldway Property.

Want more information? Contact an officer of the *Hugo Neighborhood*, or a member of the *Committee* on how you can become involved in this trail project.

1. Hugo Neighborhood. 2005. Public Outreach & Educational Brochure Program: Hugo's Emigrant Trails. Hugo, OR.
2. Office of National Trails Preservation & Oregon-California Trails Association (P.O. box 1019, Independence, MO, 64051-0519, 816-252-2276, octa@indepmo.org). July 2002, 4th edition. *Mapping Emigrants Trails MET Field Manual*.

Hugo Neighborhood Association & Historical Society's Mission

This information brochure is one of a series of documents published by the Hugo Neighborhood Association & Historical Society (*Hugo Neighborhood*). It is designed to be shared with neighbors for the purpose of helping protect our rural quality of life by promoting an informed citizenry in decision-making. The *Hugo Neighborhood* is an informal nonprofit charitable and educational organization with a land use and history mission promoting the social welfare of its neighbors.

Land Use & History

The *Hugo Neighborhood's* land use mission is to promote Oregon Statewide Goal 1 — Citizen Involvement, and to preserve, protect, and enhance the livability and economic viability of its farms, forests, and rural neighbors. It will act, if requested, as a technical resource assisting neighbors to represent themselves.

Its history mission is to educate, collect, preserve, interpret, and research its local history and to encourage public interest in the history of the Hugo area.

Volunteer membership dues are \$10.00 annually per family and normally used for paper, ink, envelopes, publications and mailings. Make checks to the *Hugo Neighborhood* and send them to our Treasurer.

Email: hugo@jeffnet.org
Web Page: <http://jeffnet.org/~hugo/>
Project Leader: Mike Walker
Edited by Karen Rose & Jacque Hardwick

HNA&HS Officers

Wayne McKy, Chair
6497 Hugo Road
Grants Pass, Oregon 97526

Mike Walker, Education Chair
3388B Merlin Rd #195
Grants Pass, Oregon 97526

Hal Anthony, Outreach Chair
3995 Russell Road
Grants Pass, Oregon 97526

Jacqueline Hardwick, Treasurer
885 Red Mountain Drive
Grants Pass, Oregon 97526

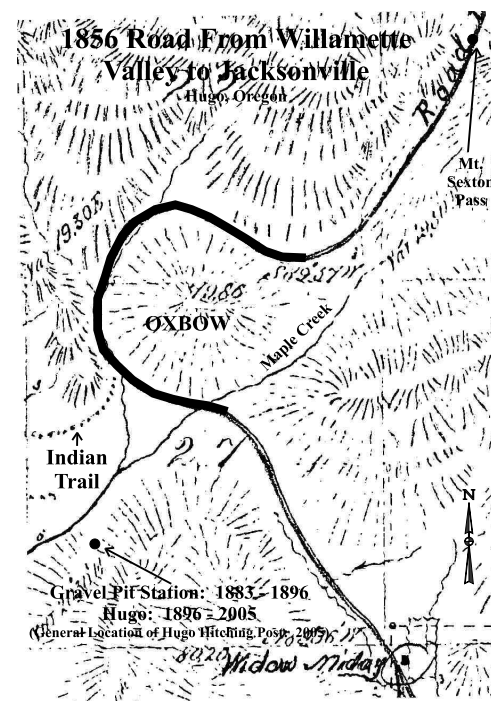
Karen Rose, Web Master
575 Red Mountain Drive
Grants Pass, Oregon 97526

Ann Lyneis, Secretary
5100 Tunnel Loop Road
Grants Pass, Oregon 97526

APPLEGATE TRAIL: BOLDWAY PROPERTY

OR-JA-00-34-06-22- Boldway Property

Brochure 19 in
Emigrant Trails Series



February 18, 2005
Updated July 27, 2005

Hugo Emigrant Trails Committee

Hugo Neighborhood Association &
Historical Society