

---

---

## William Howley, Hugo's Early Settler

For purposes of the Hugo's Settler brochure series, an early Hugo settler includes anyone who lived there sometime from 1900 through the 1930s.

### William Howley

Born: 1855 New York  
Father & Mother's Birth Place: Ireland

### 1900 Census. Merlin Precinct, Josephine County, Oregon

William Howley Head NY 1855 45 yrs

William's occupation was farmer.

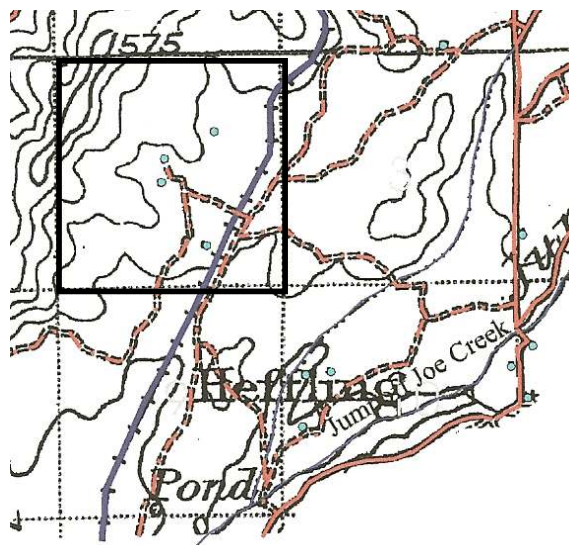
---

---

## William Howley Family, Early Hugo Settler Family: ca., Early 1900s?

**1904 William Howley's Hugo Homestead** On May 5, 1904 William Howley was issued a homestead certificate for 80 acres in Hugo, Oregon (Patent No. 5544).<sup>2,3</sup>

The homestead was close to the Southern Pacific Railroad in T.35S., R.6W. Section 4, WM. It was one section north of the section the Hefling homestead and railroad stop was in.



T.35S., R.6W., Section 4, WM

---

---

## Homesteader

**1932** The Howley homestead was in other ownership in 1932.<sup>3</sup>

**Want more information?** Contact an officer of the *Hugo Neighborhood* on how you can become involved in your community's history and land use.

---

1. Bureau of Land Management (BLM), General Land Office (GLO) Records. 2007. Official Federal Land Records Site (<http://www.glorerecords.blm.gov/>). Internet.  
2. Hugo Neighborhood. 2007. *Hugo Pioneers*. Map Of Federal Land Transfer in Hugo, Oregon, Hugo, OR.  
3. Metsker, Chas. F. 1932 *Metsker Map. Josephine County, Oregon*. Portland, OR.

## Hugo Neighborhood Association & Historical Society's Mission

This information brochure is one of a series of documents published by the Hugo Neighborhood Association & Historical Society (*Hugo Neighborhood*). It is designed to be shared with neighbors for the purpose of helping protect our rural quality of life by promoting an informed citizenry in decision-making. The *Hugo Neighborhood* is an informal nonprofit charitable and educational organization with a land use and history mission of promoting the social welfare of its neighbors.

### Land Use & History

The *Hugo Neighborhood's* land use mission is to promote Oregon Statewide Goal 1 — Citizen Involvement, and to preserve, protect, and enhance the livability and economic viability of its farms, forests, and rural neighbors. It will act, if requested, as a technical resource assisting neighbors to represent themselves.

Its history mission is to educate, collect, preserve, interpret, and research its local history and to encourage public interest in the history of the Hugo area.

Volunteer membership dues are \$10.00 annually per family and normally used for paper, ink, envelopes, publications and mailings. Send us your e-mail address if you want to know what we are doing.

Email: [hugo@jeffnet.org](mailto:hugo@jeffnet.org)

Web Page: <http://jeffnet.org/~hugo/>

Edited by Karen Rose, Wayne McKy, & Mike Walker

### HNA&HS Officers

Hal Anthony, Outreach Chair  
3995 Russell Road  
Grants Pass, Oregon 97526

Wayne McKy, Chair  
6497 Hugo Road  
Grants Pass, Oregon 97526

Mike Walker, Education Chair  
3388B Merlin Rd #195  
Grants Pass, Oregon 97526

Karen Rose, Web Master  
575 Red Mountain Drive  
Grants Pass, Oregon 97526

Not Quality Controlled, Nor Edited

# WILLIAM HOWLEY FAMILY: HUGO SETTLERS



**Very Draft**  
Brochure 178 Of Hugo's Early  
Settler Brochure Series



7) C. D. Williams Pat. 6297 (1891)	BLM	George Deane Pat. 014559 1926	Job Anderson Patent 504 1904	Breeding Pat. 01386 (1909)	Willie Wilco Pat. 43 (189)
Railroad Pat. 100 (1898)	Railroad Pat. 42 (1896)	George Woodworth Pat. 03735 (1910)	Whittington Pat. 3672 (1896)	Silas Ludwick Pat. 011318 (1923)	Frank Williams Pat. 05334 (1912)
Jacob Chadwick Patent 4420 (1882)	BLM	William Howley Pat. 5544 (1904)	Whittington Pat. 3672 (1896)	John Simerm Pat. 016189 (1929)	John Simerm Pat. 016189 (1929)
Charles Brewer Patent 013160 (1924)	George Darnell Pat 3575 (1896)	Colman Heffling Patent 3733 (1896)	Railroad Pat. 13 (1895)	Jay Rumbaugh Patent 017766 (1937)	Railroad Pat. 13 (1895)
James Hart Patent 3755 (1896)	BLM Casso Nursery	LeRoy Norton Pat. 019095 (1936)	Garret Crockett Pat 702 (1876)	Joseph McCa Pat. 3581(18	William Paddock Pat. 3894 (1897)
George Mathews Patent 3699 (1896)	as Overton 783 (1896)	Railroad Pat. 38 (1896)	BLM Casso (1876)	Wesley	

*William Howley's Hugo Homestead: 1904*

January 21, 2008

Hugo Neighborhood Association &  
Historical Society