

George Dudley Forest, Early Hugo Settler

For purposes of the Hugo's Settler brochure series, an early Hugo settler includes anyone who lived there sometime from 1900 through the 1930s.

George Dudley Forest

Born: 1841 Ohio
Father & Mother's Birth Place: Connecticut

1910 Census. Merlin Precinct, Josephine County, Oregon

Geo D. Forest	Head	OH	69 yrs
D. o. Forest	Son	MO	15 yrs
Loly Forest	Son	MO	14 yrs
J. P. Galleher	Hired Help	KY	26 yrs
Geo. Vandoneton	Hired help	MI	40 yrs

George is a farmer and a widow.

1911 *Geo. D. Forrest has this spring set about thirty-five hundred grapes on his land immediately adjoining the fruit tracts of the Three Pines company. This land is considered to be the very best for Tokays as well as other varieties. Rogue River Courier. April 7, 1911. Three Pines.*

A pleasant social gathering was that which met at the home of George D. Forest Saturday evening. The occasion being the regular weekly meeting of the Glee club. Rogue River Courier. May 12, 1911. Three Pines.

The George Forest Family, Hugo Settlers: ca., 1900s - 1920s

1911 *Mr. Baer and George D. Forest are now shipping wood from this point and will continue to ship until their supply is exhausted. Rogue River Courier. June 16, 1911. Three Pines.*

Lela Forrest is so far convalescent as to expect to leave the hospital for her home in a few days. Rogue River Courier. October 18, 1911. Three Pines.

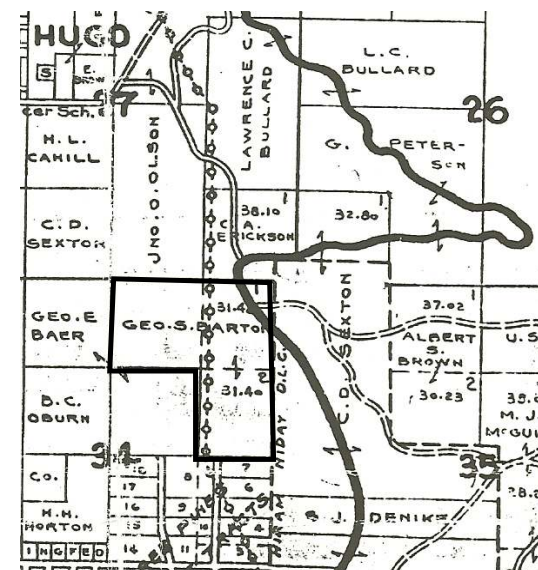
1915 **George Forest's Hugo Homestead** On July 12, 1915 George Dudley Forest was issued a homestead certificate for 102.8 acres in Hugo, Oregon (Patent No. 05130).¹⁻² This acreage is adjacent and to the north of the Three Pines Fruit Tracts.

1922 **Top Of The World Ranch** About 1922 the Bartons moved from Grants Pass to the *Top Of The World Ranch*. The ranch in Hugo was about 10 miles north of Grants Pass on the Pacific Highway. It would become Highway U.S. 99 in 1926. George had left mining for awhile to work in produce.³

1927 The Barton home on the *Top Of The World Ranch* burned December 1927. The Barton family settled in Grants Pass again. The ranch was once a wonderful place and consequently a great loss.³

Homesteader

1932 Although not managing it George S. Barton still owned the old Forest homestead in 1932.⁴



Barton's Top-Of-The-World- Ranch: 1932

Want more information? Contact an officer of the *Hugo Neighborhood* on how you can become involved in your community history and land use.

1. Bureau of Land Management (BLM), General Land Office (GLO) Records. 2007. Official Federal Land Records Site (<http://www.glorerecords.blm.gov/>). Internet.

2. Hugo Neighborhood. 2007. *Hugo Pioneers*. Map Of Federal Land Transfer in Hugo, Oregon. Hugo, OR.

3. Hugo Neighborhood. 2000. *Ruth I. Barton's Memories Of Hugo & Three Pines, Oregon: 1920 - 2000*. Hugo, OR.

4. Metsher, Chas. F. 1932 *Metsker Map. Josephine County, Oregon*. Portland, OR.

Hugo Neighborhood Association & Historical Society's Mission

This information brochure is one of a series of documents published by the Hugo Neighborhood Association & Historical Society (*Hugo Neighborhood*). It is designed to be shared with neighbors for the purpose of helping protect our rural quality of life by promoting an informed citizenry in decision-making. The *Hugo Neighborhood* is an informal nonprofit charitable and educational organization with a land use and history mission of promoting the social welfare of its neighbors.

Land Use & History

The *Hugo Neighborhood's* land use mission is to promote Oregon Statewide Goal 1 — Citizen Involvement, and to preserve, protect, and enhance the livability and economic viability of its farms, forests, and rural neighbors. It will act, if requested, as a technical resource assisting neighbors to represent themselves.

Its history mission is to educate, collect, preserve, interpret, and research its local history and to encourage public interest in the history of the Hugo area.

Volunteer membership dues are \$10.00 annually per family and normally used for paper, ink, envelopes, publications and mailings. Send us your e-mail address if you want to know what we are doing.

Email: hugo@jeffnet.org

Web Page: <http://jeffnet.org/~hugo/>

Edited by Karen Rose, Wayne McKy, & Mike Walker

HNA&HS Officers

Hal Anthony, Outreach Chair
3995 Russell Road
Grants Pass, Oregon 97526

Wayne McKy, Chair
6497 Hugo Road
Grants Pass, Oregon 97526

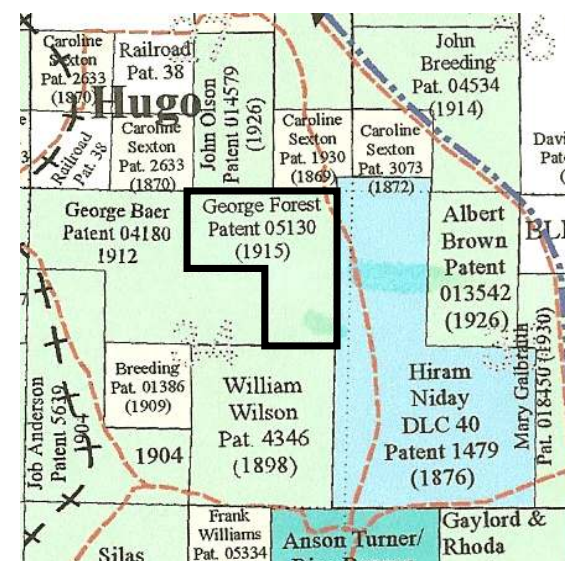
Mike Walker, Education Chair
3388B Merlin Rd #195
Grants Pass, Oregon 97526

Karen Rose, Web Master
575 Red Mountain Drive
Grants Pass, Oregon 97526

GEORGE FOREST FAMILY: HUGO SETTLERS



Very Draft
Brochure 121 Of Hugo's Early
Settler Brochure Series



George Forest's Hugo Homestead: 1915

Not Quality Controlled, Nor Edited

January 20, 2008

**Hugo Neighborhood Association &
Historical Society**

Brochure 121 in Hugo's Early Settler Brochure Series
HNA&HS 2007 - 121

C:\Documents and Settings\mike\My Documents\Genealogy\History_Brochures\People Settlers 1900 -
1930s\BROCHURE_121 Forest George 012008.wpd