

John C. & Florence Cochrane: Hugo Pioneers

John C. Cochrane

Born: 1868 PA

Father Mathew Cochrane

Born: 1840 Ireland

Mother Cyrrisca Cochrane

Born: 1848 PA

Wife Florence M. Cochrane

Born: 1874 OR

Father's Birth Place: MI

Mother's Birth Place: MI

1880 Census. Big Prairie, Newaygo, Michigan

Mathew Cochrane 40 years Ireland

Cyrrisca Cochrane 32 years PA

John C. Cochrane 12 years PA

Judson Cochrane 10 years

Edmund Cochrane 9 years

Carrie E. Cochrane 6 years

Samuel Cochrane 4 years

Austin W. Cochrane 2 years

Mirtle Cochrane 2 months

1893 J. C. Cochrane married Florence Neely October 11, 1893 in Josephine County, Oregon (Vol. 3, p. 423).

1895 Farmer J. C. Cochrane owned 240 acres in Hugo, Oregon in 1895 that were on the main Applegate Trail.¹ The 160-acre 1861 military patent by Davis/Heatt included most of the open wetlands of what would become the J. C. Cochrane Ranch. The military patent and the ranch's location had a reason: natural sub-irrigation for pasture during the winter, spring, and early summer. Naturally irrigated pasture was crucial prior to pumps, electricity, and sprinkler irrigation.²⁻⁵

The John C. Cochrane Family, Early Pioneers: 1877 - 1939

1900 Census. Merlin Precinct, Josephine Co., OR

John C. Cochrane Head 31 years PA

Florence Cochrane Wife 26 years OR

Norma Cochrane Daugh 2 years OR

Willard C. Cochrane Son 1 year OR

Curtis M. Cochrane Son 1 year OR



Cochrane Wetlands of Military Warrant: 2007

1910 Census. Merlin Precinct, Josephine Co., OR

J. C. Cochrane Head 41 years PA

Florence Cochrane Wife 36 years OR

Norma Cochrane Daugh 13 years OR

Gordon Cochrane Son 11 years OR

Curtis Cochrane Son 10 years OR

Emmett Cochrane Son 3 years OR

Florence Cochran was Florence Neely, daughter of James and Elizabeth (Vannoy) (Gibson) Neely.

Davis/Heatt 1861 Military Patent

1912 Three Pines was recently developed and a going concern in 1912 with over a hundred citizens; a brand new one-year old school, Three Pines Elementary. Gordon Cochrane, son of J. C., would one day be a teacher at Three Pines and Hugo.

Mid-1910s The Three Pines mill and lumber town had declined ca., 1915 - 1917. Except for some homes and the school the Town of Three Pines was disappearing.

1920 Census. Merlin Precinct, Josephine Co., OR

John C. Cochrane Head 51 years PA

Florence M. Cochrane Wife 45 years OR

Norma Cochrane Daugh 23 years OR

Emmett Cochrane Son 13 years OR

1930 Census. Lucky Queen, Josephine Co., OR

John C. Cochrane Head 61 years PA

Florence Cochrane Wife 56 years OR

Gordon W. Cochrane Son 31 years OR

Emmett Cochrane Son 23 years OR

Ann Potts Boarder 59 years IL

Want more information? Contact an officer of the *Hugo Neighborhood* on how you can become involved in your community's history and land use.

1. Koch, Joseph , Draughtsman. 1895 Official Josephine County, Oregon. Map. Scale 1 inch = 1 mile. Meston - Dygert Book M'F'G. Portland, OR.
2. Hugo Neighborhood. 2007. *Hugo Pioneers*. Map Of Federal Land Transfer in Hugo, Oregon. Hugo, OR.
3. Lincoln, Abraham, President of United States. 1861. Military Warrant to John Davis. City of D. C., Washington.
4. Hugo Neighborhood. 2007. *Pioneers For Hugo Tombstone Quarry Section Of Applegate Trail: 1856 - 1927*. Map of Federal Land Transfers for 1.5 miles of Applegate Trail. Hugo, OR.
5. Hugo Neighborhood. 2007. John Davis: Warrant Locator. Hugo, OR.

Hugo Neighborhood Association & Historical Society's Mission

This information brochure is one of a series of documents published by the Hugo Neighborhood Association & Historical Society (*Hugo Neighborhood*). It is designed to be shared with neighbors for the purpose of helping protect our rural quality of life by promoting an informed citizenry in decision-making. The *Hugo Neighborhood* is an informal nonprofit charitable and educational organization with a land use and history mission of promoting the social welfare of its neighbors.

Land Use & History

The *Hugo Neighborhood's* land use mission is to promote Oregon Statewide Goal 1 — Citizen Involvement, and to preserve, protect, and enhance the livability and economic viability of its farms, forests, and rural neighbors. It will act, if requested, as a technical resource assisting neighbors to represent themselves.

Its history mission is to educate, collect, preserve, interpret, and research its local history and to encourage public interest in the history of the Hugo area.

Volunteer membership dues are \$10.00 annually per family and normally used for paper, ink, envelopes, publications and mailings. Send us your e-mail address if you want to know what we are doing.

Email: hugo@jeffnet.org

Web Page: <http://www.hugoneighborhood.org/>

Edited by Jean Boling, Wayne McKy,

Karen Rose, & Mike Walker

HNA&HS Officers

Hal Anthony, Outreach Chair
3995 Russell Road
Grants Pass, Oregon 97526

Wayne McKy, Chair
6497 Hugo Road
Grants Pass, Oregon 97526

Karen Rose, Web Master
575 Red Mountain Drive
Grants Pass, Oregon 97526

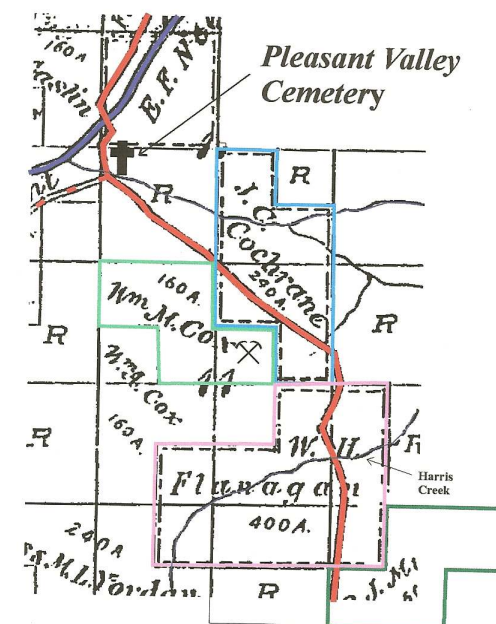
Mike Walker, Education Chair, Hugo
Neighborhood; Director, Rogue Advocates
3388B Merlin Rd #195
Grants Pass, Oregon 97526

Josephine County Historical Society

Jean Boling, Historic Sites Chair
214 NW Booth Street
Grants Pass, Oregon 97526

J. C. COCHRANE FAMILY: EARLY HUGO PIONEERS

Brochure 12 Of Hugo's Early Pioneer Brochure Series



*J. C. Cochrane Ranch At Jumpoff Joe Creek
Along The Applegate Trail: 1895*

May 12, 2008

**Hugo Neighborhood Association &
Historical Society
Josephine County Historical Society
Rogue Advocates**

Brochure 12 in Hugo's Early Settler Brochure Series
HNA&HS 2008 -12

C:\Documents and Settings\mike\My Documents\Genealogy\History_Brochures\People
Pioneers 1800s Quarry Section\BROCHURE_12 Cochrane 051208.wpd