

## Illinois Valley Road (IV) Of Applegate Trail (*Trail*): Fort Vannoy School (IV-N4B)<sup>1</sup>

**Hugo's IV Road to Illinois Valley via Van Noys Ferry** (route of the *Trail*) is located in Josephine County, Oregon from the Rogue River in the south to Widow Niday's place in the north.<sup>1</sup>

### FORT VANNOY SCHOOL

**POI Name** Fort Vannoy School<sup>2</sup> ■ IV-N4A.

**POI ID Code** OR-AG-24-36-06-09/16-W-IV-N4A

Fort Vannoy School ■ IV-N4A.

### 1855 GLO Subdivisions, West on True Line

**Between Sections 9 and 16, T.36S., R.6W., W.M.,**

Page 129

**Chains** N89" 5W West on True Line Between Secs 9 & 16

**38.60** Road from Ill Valley to Willamette c N & S [38.6 chains = 2,547.6']

**40.30** Set qr Sec Cor (From Which)  
a Y. Pine 12 in dia bears N42" W 66 lks  
a Do 21 in dia bears S57E 87 do  
40.30 chains = 2,659.8']

### Latitude & Longitude POI Calculated<sup>3</sup>

42" 26' 52.8" North Latitude (IV-N4A)

123" 24' 51.3" West Longitude (IV-N4A)

### IV-N4A Located With C.S./Marker No.

1. Hugo Neighborhood. 2009 *Hugo's Applegate Trail GLO Points of Interest*. Brochure 1 in Applegate Trail GLO Surveys Series. Hugo, OR.

2. General Surveyor Office of Oregon. Subdivision Lines For 1856 Map (T.34., R. 6. W., Willamette Meridian). Field Notes. Surveyor Luke G Hyde. Contract February 19, 1855; Surveyed March 31, 1856; Hugo Neighborhood. 2006. *Hugo's Applegate Trail Field Notes*. Brochures 10A - 10D in Emigrant Trail Series. Hugo, OR.

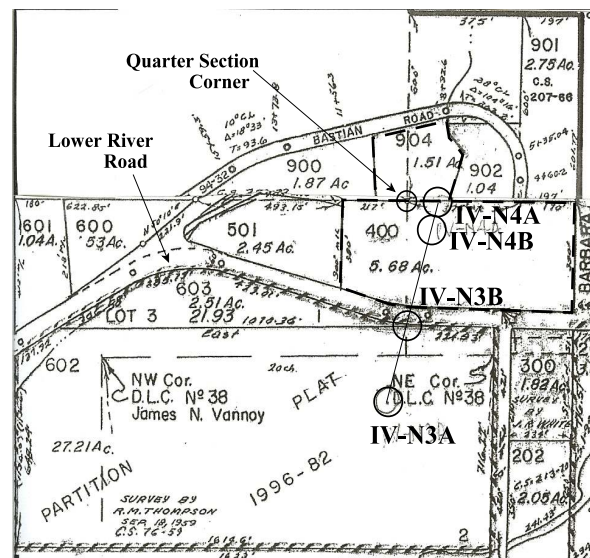
3. Rose, Karen. 2006. Hugo Emigrant Trails Committee, Hugo Neighborhood Association & Historical Society. *Hugo's Applegate Trail Diaries, Journals & Reminiscences Project*. "Yellow Book Project" For Participants of the Diaries, Journals and Reminiscences Sub-Committee. Hugo, OR. Hugo Neighborhood. 2005 *Diaries & Journals*. Brochure 11 in Emigrant Trail Series. Hugo, OR; Hugo Neighborhood. 2006 *Diaries, Journals & Reminiscences Sub-Committee*. Brochure 11B in Emigrant Trail Series. Hugo, OR.

## Diaries, Journals, & Reminiscences<sup>3</sup>

**C.S. 76 59** September 15, 1959 "Survey Of A Portion Of Section 16, T.36S., R.6W., W.M." (V 178, P 190). The 1855 IV Road is 110.55' (2,658.15' - 2,547.6' = 110.55') East of Found 1 1/2" Iron Bar at 1/4 Section between Sections 9 & 16 (C.S. 76 59; Figure 1).

### Located IV-N4B With C.S./Carsonite Marker

donated by NWOCTA.<sup>4</sup> It was decided to locate IV-N4B along the security fence of the Fort Vannoy Elementary School. Viewers would be able to view the marker from the school yard without the trip through the blackberries and underbrush to and across Vannoy Cr.

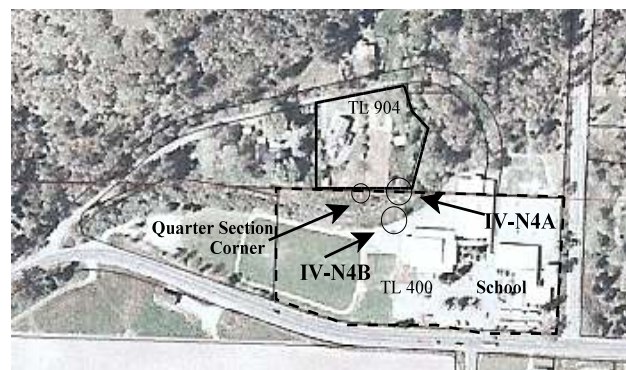


**Map 1. IV-N4A & Off Set IV-N4B**

4. Hugo Neighborhood. August 25, 2011 *Minutes of Field Trip To Illinois Valley Road of Applegate Trail: Fort Vannoy School (IV-N4A/IV-N4B)*. Hugo, OR.

## General Land Office (GLO)<sup>2</sup> & Josephine County Surveys (C.S.) & Maps

**Stakeholders** 1. North Boundary IV-N4A Private Property: Brian E & Cynthia M. Burns, Tax Lot 904, Section 9, T.36S., R.6W., W.M.; South boundary of IV-N4A: Three Rivers/Josephine County Unit Joint School District, Fort Vannoy School, Tax Lot 400, Section 16, T.36S., R.6W., W.M..



**Aerial Photo 1. IV-N4A & IV-N4B Off Set**

**OCTA Trail Classification** Class ④ Altered and Verified Trail.<sup>5</sup>

**Coherence Rule** Linear Uniformity. Yes

**Corroborative Rule** Confirming Evidence. Yes

**Collateral Rule** Physical/Topo Evidence. No

**Correlation Rule** Overall Agreement. Yes

**Be Respectful** Do not trespass. IV-N4A/IV-N4B is located on private property not open to the public or public property needing permission to enter.

**More Information** Contact a member of the Hugo Emigrant Trails Committee.

5. Office of National Trails Preservation & Oregon-California Trails Association (P.O. box 1019, Independence, MO, 64051-0519, 816-252-2276, octa@indepmo.org). July 2002, 4<sup>th</sup> edition. *Mapping Emigrants Trails MET Field Manual*.

## Hugo Emigrant Trails Committee

Hugo is blessed with a rich heritage of historic roads, rough though they were. The *Hugo Emigrant Trails Committee* was formed to bring together all those who want to learn more about the early transportation in the area, from the casual admirer to the dedicated researcher. Its aim is to collect and record information about Hugo's emigrant trails, especially its two historic 1850s General Land Office mapped roads, and to share this information (e.g., through *Hugo History Day*, talks, hikes, group visits, training exercises, workshops, publications, web sites, etc.).

Karen Rose, Co-Project Leader  
Mike Walker, Co-Project Leader

### *Diaries, Journals & Reminiscences SubCommittee*

Jean Boling  
Glen Campbell  
Janet McKy  
Joe Neiderheiser  
Leta Neiderheiser  
Berneata Rarey  
Kelly Rarey  
Karen Rose  
Mike Walker

### *General Land Office Field Survey SubCommittee*

Glen Campbell  
Jim Ford  
Rene Ford  
Joe Neiderheiser  
Kelly Rarey  
Mike Walker  
Chris Wytcherley

## Hugo Neighborhood Association & Historical Society's Mission

This information brochure is one of a series of documents published by the Hugo Neighborhood Association & Historical Society (*Hugo Neighborhood*). It is designed to be shared with neighbors for the purpose of helping protect our rural quality of life by promoting an informed citizenry in decision-making. The *Hugo Neighborhood* is an informal nonprofit charitable and educational organization with a land use and history mission of promoting the social welfare of its neighbors.

### Land Use & History

The *Hugo Neighborhood's* land use mission is to promote Oregon Statewide Goal 1 — Citizen Involvement, and to preserve, protect, and enhance the livability and economic viability of its farms, forests, and rural neighbors. It will act, if requested, as a technical resource assisting neighbors to represent themselves.

Its history mission is to educate, collect, preserve, interpret, and research its local history and to encourage public interest in the history of the Hugo area. Volunteer membership dues are \$10.00 annually per family and normally used for paper, ink, envelopes, publications and mailings.

*Hugo Neighborhood*  
3388B Merlin Rd # 195  
Grants Pass, Oregon 97526  
541-471-8271  
Email: hugo@jeffnet.org

Edited by Jean Boling Karen Rose & Mike Walker

## IV Of Applegate Trail: Fort Vannoy School (IV-N4A/IV-N4B)



*Photo 1. Co-Sponsor Representatives: Leta Neiderheiser, NWOCTA; Kathie Marshall, JCHS; Kathie Hill with Post Pounder, Fort Vannoy Elementary School; Kelly Rarey, Hugo Neighborhood; and Bob Crouse, Fort Vannoy Farms, Inc.*

September 7, 2011

Fort Vannoy Elementary School  
Fort Vannoy Farms, Inc.  
Hugo Neighborhood Association &  
Historical Society  
Josephine County Historical Society  
NW Chapter OR-CA Trails Association