

Illinois Valley Road (IV) Of Applegate Trail (*Trail*): Vannoy DLC 3 (IV-N3B)¹

Hugo's IV Road to Illinois Valley via Van Noys Ferry (route of the *Trail*) is located in Josephine County, Oregon from the Rogue River in the south to Widow Niday's place in the north.¹

NORTH LINDSEY APPLGATE PRAIRIE

POI Name North Lindsey Applegate Prairie² ■ IV-N3A.

POI ID Code OR-AT-00-36-06-16/**-*-IV-N3A.

1857 DLC No. 38 Survey Notes for POI Pages 330 - 331. Donation Land Claim in T. 36S., R. 6 W., Sec 16.

Chains East on the North Boundary of C 38

15.5 Trail from Vannoys to Ft. Leland [15.5 chains = 1,023']
20.0 Set a post for the N.E. corner

Latitude & Longitude POI Calculated³

42" 26' 47.1" North Latitude (IV-N3A)
123" 24' 53.0" West Longitude (IV-N3A)

POI IV-N3B Off Set Located With C.S. &

Interpretative Sign Yes. IV-N3A is just south of the Fort Vannoy Elementary School; it was not located as it was in a working field with 6 - 7 tall field corn. A permanent marker was placed at IV-N3B Off Set (24.5' east of County ROW Monument (Figure 1).

1. Hugo Neighborhood. 2009 *Hugo's Applegate Trail GLO Points of Interest*. Brochure 1 in Applegate Trail GLO Surveys Series. Hugo, OR.
2. General Surveyor Office of Oregon. Subdivision Lines For 1856 Map (T.34., R. 6. W., Willamette Meridian). Field Notes. Surveyor Luke G Hyde. Contract February 19, 1855; Surveyed March 31, 1856; Hugo Neighborhood. 2006. *Hugo's Applegate Trail Field Notes*. Brochures 10A - 10D in Emigrant Trail Series. Hugo, OR.

Diaries, Journals, & Reminiscences³

C.S. 76 - 59 A C.S. that specifically located the north boundary of the James N. Vannoy 1857 DLC No. 38 could not be found. The following steps were used to plot IV-N3A/IV-N3B on C.S. 76 - 59 (Figure 1): 1. Plotted bearing and distance between IV-N3A and IV-N4A on the 1996 USGS 7.5' Quad: 195.3" & 600'; 2. Plotted 195.3" & 600' from IV-N4A to IV-N3A on C.S. 76 - 59; 3. Plotted bearing and distance from "County ROW Monument" to IV-N3A: 187.0" & 172', and plotted 24.5' east of "County ROW Monument" to IV-N3B.

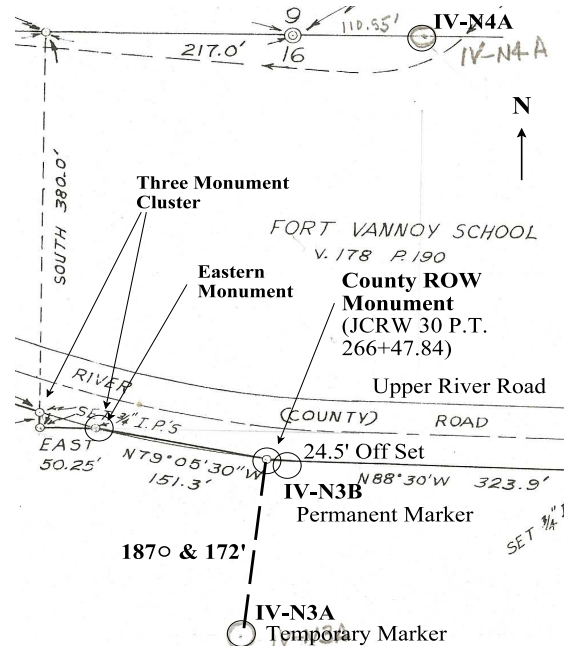


Figure 1. IV-N3A & IV-N3B Plotted

A permanent carsonite marker was placed at IV-N3B just south of right-of-way of Upper River Road.

General Land Office (GLO) & Josephine County Surveys (C.S.) & Maps¹

Stakeholders

Bob & Barbara Crouse, Fort Vannoy Farms, Inc., Tax Lot 602, Section 16, T.36S., R.6W., W.M., Grants Pass, Oregon

OCTA Trail

Classification

Class ③ Verified Trail, or Class ④ Altered and Verified Trail.⁴



Photo 2. County ROW Monument Looking South

Coherence Rule Linear Uniformity. Yes

Corroborative Rule Confirming Evidence. Yes

Collateral Rule Physical/Topo Evidence. No

Correlation Rule Overall Agreement. Yes

Be Respectful Do not trespass. IV-N3A/IV-N3B is located on private property not open to the public.

More Information Contact a member of the Hugo Emigrant Trails Committee.

3. Rose, Karen. 2006. Hugo Emigrant Trails Committee, Hugo Neighborhood Association & Historical Society. *Hugo's Applegate Trail Diaries, Journals & Reminiscences Project*. "Yellow Book Project" For Participants of the Diaries, Journals and Reminiscences Sub-Committee. Hugo, OR. Hugo Neighborhood. 2005 *Diaries & Journals*.
4. Office of National Trails Preservation & Oregon-California Trails Association (P.O. box 1019, Independence, MO, 64051-0519, 816-252-2276, octa@indepmo.org). July 2002, 4th edition. *Mapping Emigrants Trails MET Field Manual*.

Hugo Emigrant Trails Committee

Hugo is blessed with a rich heritage of historic roads, rough though they were. The *Hugo Emigrant Trails Committee* was formed to bring together all those who want to learn more about the early transportation in the area, from the casual admirer to the dedicated researcher. Its aim is to collect and record information about Hugo's emigrant trails, especially its two historic 1850s General Land Office mapped roads, and to share this information (e.g., through *Hugo History Day*, talks, hikes, group visits, training exercises, workshops, publications, web sites, etc.).

Karen Rose, Co-Project Leader
Mike Walker, Co-Project Leader

Diaries, Journals & Reminiscences SubCommittee

Jean Boling
Glen Campbell
Janet McKy
Joe Neiderheiser
Leta Neiderheiser
Berneata Rarey
Kelly Rarey
Karen Rose
Mike Walker

General Land Office Field Survey SubCommittee

Glen Campbell
Jim Ford
Rene Ford
Joe Neiderheiser
Kelly Rarey
Mike Walker
Chris Wytcherley

Hugo Neighborhood Association & Historical Society's Mission

This information brochure is one of a series of documents published by the Hugo Neighborhood Association & Historical Society (*Hugo Neighborhood*). It is designed to be shared with neighbors for the purpose of helping protect our rural quality of life by promoting an informed citizenry in decision-making. The *Hugo Neighborhood* is an informal nonprofit charitable and educational organization with a land use and history mission of promoting the social welfare of its neighbors.

Land Use & History

The *Hugo Neighborhood's* land use mission is to promote Oregon Statewide Goal 1 — Citizen Involvement, and to preserve, protect, and enhance the livability and economic viability of its farms, forests, and rural neighbors. It will act, if requested, as a technical resource assisting neighbors to represent themselves.

Its history mission is to educate, collect, preserve, interpret, and research its local history and to encourage public interest in the history of the Hugo area. Volunteer membership dues are \$10.00 annually per family and normally used for paper, ink, envelopes, publications and mailings.

Hugo Neighborhood
3388B Merlin Rd # 195
Grants Pass, Oregon 97526
541-471-8271
Email: hugo@jeffnet.org

Edited by Jean Boling, Karen Rose & Mike Walker

IV Of Applegate Trail: North Lindsey Applegate Prairie (IV-N3A/IV-N3B)



*Photo 2. Mapping & Marking Crew
At IV-N3B Off Set*

September 7, 2011

**Fort Vannoy Elementary School
Fort Vannoy Farms, Inc.
Hugo Neighborhood Association &
Historical Society
Josephine County Historical Society
NW Chapter OR-CA Trails Association**