

Jacksonville Road (JR) Of Applegate Trail (*Trail*): Harris Road 2 (JA-5)¹

Hugo's Jacksonville Road (JA) from Willamette Valley to Jacksonville (route of the Applegate Trail) is located in Josephine County, Oregon from Louse Creek in the south to Grave Creek in the north. There are 17 GLO surveyed points of interest (POI) along the JR in Hugo's area of interest.²

HARRIS ROAD 2 (Harris Creek)

Road POI Name Harris Road 2³ ■ JA-5.

POI ID Code OR-AT-00-35-06-13/14-N-JA-05.

1855 GLO Survey Notes for POI Page 9:

Subdivisions of Township N_o 35 South of Range N_o 6 West, North Between Secs 13 & 14.

Chains

18.00 Leave Field C N10W & S10E

22.50 Jacksonville Road c N10W & S10E
[22.5 chains = **1,485'**]

37.00 Same Road [Jacksonville Road] c [course] N10W & S10E

40.00 Set Qu [Quarter] Sec [Section] Post
[40 chains = 2,640'] [C.S. 1995-107records 2,651.46']; 2,651.46' - 2,640' = 11.46' difference in surveys; need to research]

Latitude & Longitude of POI Calculated³

42° 31' 29" North Latitude

123° 21' 57" West Longitude

POI Located With GPS/Interpretative Sign Yes.

May 17, 2006. Wooden Stake. May 12, 2010.

Metal Detection Work Not Yet. With permission.

Josephine County Survey (C.S.) 1995-107

C.S. 1995 - 107 Bearing & Distance: Plotted GLO and C.S. JA-5 locations on C.S. 1995-107 survey plat. Measured GLO and C.S. JA-5 locations bearing and distance from Monument set at SW 1/16 along I-5 right-of-way (SW 1/16 Monument Set).

1. **JA-5 No. 1 Location** GLO 22.5 chains = 1,485':



JA-5: Harris Road 2: 2006

220', 313.4" azimuth from SW 1/16 Monument Set.

2. **JA-5 No. 2 Location** GLO 1,485' + C.S. 11.46' = 1,496.46'; 228', 315" azimuth from SW 1/16 Monument Set.

2010 In 2006 a GPSed wooden marker located JA-5 close to the east guardrail of I-5. The May 12, 2010 C.S. bearing and distance location was 30' from the 2006 GPS location along the north-south section line and the stake was moved 30' south.

General Land Office (GLO) Surveys & Maps¹

JA-5 Harris Road 2 is north of "Harris Creek" on the east shoulder of I-5 in the Harris Creek Prairie. It is approximately 250' NNE to the 1860 Hall's grave marker at the entrance to the Josephine County Sportsman Park.

Ownership JA-5 Harris Road 2 is administered by the Oregon Highway Commission.

1896 Military Warrant On January 18, 1896 Thomas Bryant was issued a military warrant for 80 acres along the Applegate Trail in Hugo, Oregon (Patent No. D143). This 80 acres is two forties orientated east-west across Hall's Draw. JA-5 is located in the middle of the warrant.

OCTA Trail Classification Class ④ Verified Altered Trail.

Coherence Rule Linear Uniformity. Yes

Corroborative Rule Confirming Evidence. Yes

Collateral Rule Physical/Topo Evidence. No

Correlation Rule Overall Agreement. Yes

Be Respectful. Do not trespass. Always be respectful of your neighbor's property rights. With permission, leave only footprints.

Want more information? Contact a member of the Hugo Emigrant Trails Committee.

1. Hugo Neighborhood. 2009 *Hugo's Applegate Trail GLO Points of Interest*. Brochure 1 in Applegate Trail GLO Surveys Series. Hugo, OR.

2. Hugo Neighborhood. 2009 *Hugo's Jacksonville Road Of Applegate Trail Points of Interest*. Brochure 2 in Applegate Trail GLO Surveys Series. Hugo, OR.

3. 1856 General Land Office Field Survey Sub-Committee, Hugo Emigrant Trails Committee, Hugo Neighborhood Association & Historical Society. February 10, 2006. *General Land Office Field Survey Notes: Hugo's Applegate Trail Segments*. Hugo, OR.

Hugo Emigrant Trails Committee

Hugo is blessed with a rich heritage of historic roads, rough though they were. The *Hugo Emigrant Trails Committee* was formed to bring together all those who want to learn more about the early transportation in the area, from the casual admirer to the dedicated researcher. Its aim is to collect and record information about Hugo's emigrant trails, especially its two historic 1850s General Land Office mapped roads of the Applegate Trail, and to share this information (e.g., through *Hugo History Day*, talks, hikes, group visits, training exercises, workshops, publications, web sites, etc.).

Karen Rose, Co-Project Leader
Mike Walker, Co-Project Leader

Diaries, Journals & Reminiscences SubCommittee

Karen Rose
Janet McKy
Kelly & Berneata Rarey
Glen Campbell
Norm Tieman
Joe & Leta Neiderheiser
Kristen Boyce
Kathy Burkey
Penny Shipley
Mike Walker

General Land Office Field Survey SubCommittee

Glen Campbell
Jim & Rene Ford
Joe Neiderheiser
Kelly Rarey
Mike Walker
Chris Wytcherley

Hugo Neighborhood Association & Historical Society's Mission

This information brochure is one of a series of documents published by the Hugo Neighborhood Association & Historical Society (*Hugo Neighborhood*). It is designed to be shared with neighbors for the purpose of helping protect our rural quality of life by promoting an informed citizenry in decision-making. The *Hugo Neighborhood* is an informal nonprofit charitable and educational organization with a land use and history mission of promoting the social welfare of its neighbors.

Land Use & History

The *Hugo Neighborhood's* land use mission is to promote Oregon Statewide Goal 1 — Citizen Involvement, and to preserve, protect, and enhance the livability and economic viability of its farms, forests, and rural neighbors. It will act, if requested, as a technical resource assisting neighbors to represent themselves.

Its history mission is to educate, collect, preserve, interpret, and research its local history and to encourage public interest in the history of the Hugo area. Volunteer membership dues are \$10.00 annually per family and normally used for paper, ink, envelopes, publications and mailings.

Hugo Neighborhood

3388B Merlin Rd # 195, Grants Pass, Oregon 97526
541-471-8271

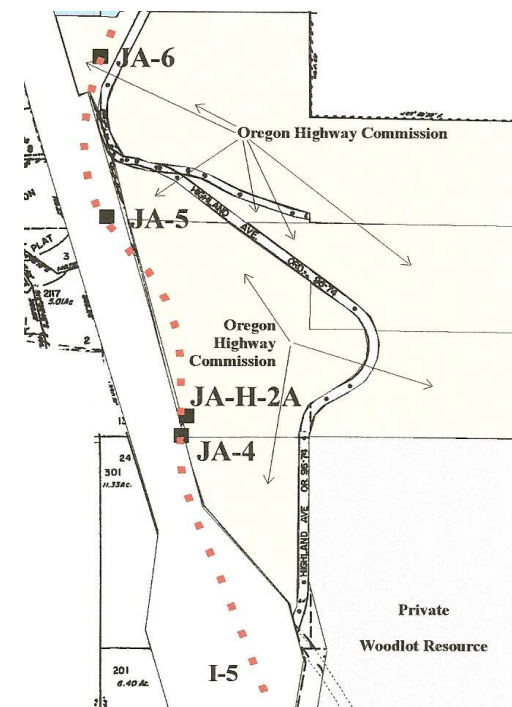
Email: hugo@jeffnet.org
Web Page: <http://jeffnet.org/~hugo/>

Edited by Jean Boling, Kelly Rarey, and Mike Walker

JR Of Applegate Trail: Harris Road 2 (JA-5)



Brochure 9 of Applegate Trail
GLO Surveys
Brochure Series



May 27, 2010

**Hugo Emigrant Trails Committee,
Hugo Neighborhood Association &
Historical Society
Josephine County Historical Society**