

## Jacksonville Road (JR) Of Applegate Trail (*Trail*): Harris Road 1 (JA-4)<sup>1</sup>

**Hugo's Jacksonville Road (JA) from Willamette Valley to Jacksonville** (route of the Applegate Trail) is located in Josephine County, Oregon from Louse Creek in the south to Grave Creek in the north. There are 17 GLO surveyed points of interest (POI) along the JR in Hugo's area of interest.<sup>2</sup>

### HARRIS ROAD 1 (I-5 Rest Area)

**Road POI Name** Harris Road 1<sup>3</sup> ■ JA-4.

**POI ID Code** OR-AT-00-35-06-13/24-W-JA-04.

### 1855 GLO Survey Notes for POI Page 8:

Subdivisions of Township N<sub>o</sub> 35 South of Range N<sub>o</sub> 6 West, West on True Line Between Secs 13 & 24

### Chains

**73.15 Jacksonville Road c N&S** [73.15 chains = 4,827.9'; [5,263.5' - 4,827.9' = 435.6']

73.15 a house bears N25NE 3 chains distance

79.75 To Sec Cor [79.75 chains = 5,263.5'].

[C.S. 1995-107 records section line = 5,280.38'; 5,280.38' - 5,263.5' = 16.88' difference in surveys; need to research]

### Latitude & Longitude of POI Calculated<sup>3</sup>

42° 31' 14" North Latitude

123° 21' 51" West Longitude

**POI Located With GPS/Interpretative Sign** Yes, September 5, 2006. Wooden stake.

**Metal Detection Work** Not Yet.

1. Hugo Neighborhood. 2009 *Hugo's Applegate Trail GLO Points of Interest*. Brochure 1 in Applegate Trail GLO Surveys Series. Hugo, OR.

2. Hugo Neighborhood. 2009 *Hugo's Jacksonville Road Of Applegate Trail Points of Interest*. Brochure 2 in Applegate Trail GLO Surveys Series. Hugo, OR.

## Josephine County Survey (C.S.) 1995-107

**Bearing & Distance: C.S. 1995-107** April 25, 2010

1. **JA-4 No. 1 Location** GLO 435.6' east of Section Corner (13, 14, 23, & 24) = 550.86' - 435.6' = 115.26' west of monument (5/8" x 30" iron rod monument with yellow plastic cap marked "Nygren LS1035").

2. **JA-4 No. 2 Location** 435.6' + 16.88' = 452.48 east of Section Corner = 550.86' - 452.48' = 98.38' west of "Nygren monument". New physical JA-4 No. 2 Location was 5' different in longitude and 35' different in latitude than the September 5, 2006 stake.

### JA-4 No. 2 Location GPS Coordinates

42° 31' 14.0" North Latitude

123° 21' 50.7" West Longitude

**JA-4 No. 2 Location** is north of the East I-5 Manzanita Rest Area along the east side of the I-5 right-of-way in the I-5 ditch. There is a benched road trace between the ditch and the top of the cut bank with a north-south orientation.

**Harris Swale** There is a 390 foot swale north of JA-4 and south of Harris Creek. The swale was first identified by a faint linear tree pattern on a 2006 aerial photograph. On the ground the swale is slight, but obvious in its northern segment and faint to disappearing in its southern section. A working hypothesis is that this swale is a *Trail* remnant, or a parallel ditch diverting water from the *Trail*. Its alignment matches the 1856 GLO survey map.

**Harris Creek Ford** There are three low gradient ford slopes across Harris Creek NW of the Harris swale. These fords could connect the swale with the *Trail* identified on GLO map NNW toward JA-5.<sup>4</sup>

## General Land Office (GLO) Surveys & Maps<sup>1</sup>



**Benched Road Trace North of JA-4**

**Patent** JA-4 is located on the old Harris 320-acre Donation Land Claim (December 9, 1865 Certificate No. 70, OR 06656, PL 167).

**Public Ownership** JA-4 Harris Road 1 is administered by the Oregon Highway Commission.

**OCTA Trail Classification** Class ④ Verified Altered Trail.

**Coherence Rule** Linear Uniformity. Yes

**Corroborative Rule** Confirming Evidence. Yes

**Collateral Rule** Physical/Topo Evidence. Yes

**Correlation Rule** Overall Agreement. Yes

**Be Respectful** Do not trespass. JA-4 is located on publicly administered lands.

**Want more information?** Contact a member of the Hugo Emigrant Trails Committee.

3. 1856 General Land Office Field Survey Sub-Committee, Hugo Emigrant Trails Committee, Hugo Neighborhood Association & Historical Society. February 10, 2006. *General Land Office Field Survey Notes: Hugo's Applegate Trail Segments*. Hugo, OR.  
4. Hugo Neighborhood. 2010. *JR Ford No. 4. Harris Creek Ford*. Brochure 5 of Applegate Trail Fords Brochure Series. Hugo, OR.

## Hugo Emigrant Trails Committee

Hugo is blessed with a rich heritage of historic roads, rough though they were. The *Hugo Emigrant Trails Committee* was formed to bring together all those who want to learn more about the early transportation in the area, from the casual admirer to the dedicated researcher. Its aim is to collect and record information about Hugo's emigrant trails, especially its two historic 1850s General Land Office mapped roads of the Applegate Trail, and to share this information (e.g., through *Hugo History Day*, talks, hikes, group visits, training exercises, workshops, publications, web sites, etc.).

Karen Rose, Co-Project Leader  
Mike Walker, Co-Project Leader

### *Diaries, Journals & Reminiscences SubCommittee*

Karen Rose  
Janet McKy  
Kelly & Berneata Rarey  
Glen Campbell  
Norm Tieman  
Joe & Leta Neiderheiser  
Kristen Boyce  
Kathy Burkey  
Penny Shipley  
Mike Walker

### *General Land Office Field Survey SubCommittee*

Glen Campbell  
Jim & Rene Ford  
Joe Neiderheiser  
Kelly Rarey  
Mike Walker  
Chris Wytcherley

## Hugo Neighborhood Association & Historical Society's Mission

This information brochure is one of a series of documents published by the Hugo Neighborhood Association & Historical Society (*Hugo Neighborhood*). It is designed to be shared with neighbors for the purpose of helping protect our rural quality of life by promoting an informed citizenry in decision-making. The *Hugo Neighborhood* is an informal nonprofit charitable and educational organization with a land use and history mission of promoting the social welfare of its neighbors.

### Land Use & History

The *Hugo Neighborhood's* land use mission is to promote Oregon Statewide Goal 1 — Citizen Involvement, and to preserve, protect, and enhance the livability and economic viability of its farms, forests, and rural neighbors. It will act, if requested, as a technical resource assisting neighbors to represent themselves.

Its history mission is to educate, collect, preserve, interpret, and research its local history and to encourage public interest in the history of the Hugo area.

Volunteer membership dues are \$10.00 annually per family and normally used for paper, ink, envelopes, publications and mailings.

### *Hugo Neighborhood*

3388B Merlin Rd # 195, Grants Pass, Oregon 97526  
541-471-8271

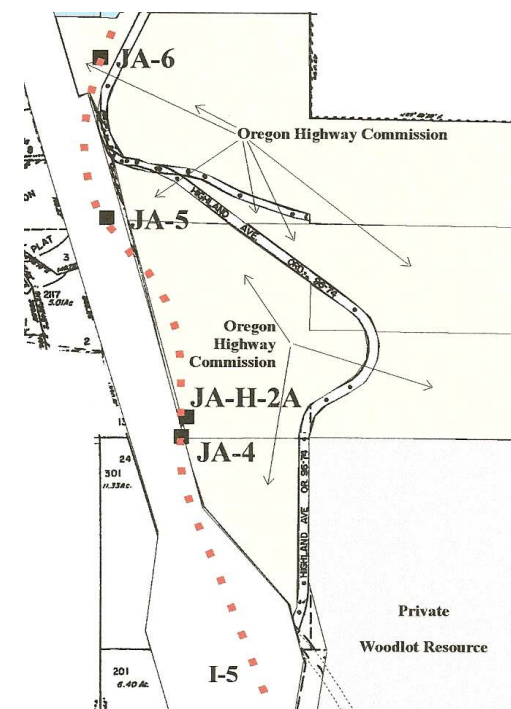
Email: hugo@jeffnet.org

Edited by Jean Boling, Kelly Rarey, and Mike Walker

## JR Of Applegate Trail: Harris Road 1 (JA-4)



Brochure 8 of Applegate Trail  
GLO Surveys  
Brochure Series



*Oregon Territorial Road On  
2006 Josephine County Assessor Maps*

May 27, 2010

**Hugo Emigrant Trails Committee,  
Hugo Neighborhood Association &  
Historical Society  
Josephine County Historical Society**