

Jacksonville Road (JR) Of Applegate Trail (*Trail*): Soldier Creek (JA-2)¹

Hugo's Jacksonville Road (JA) from Willamette Valley to Jacksonville (route of the Applegate Trail) is located in Josephine County, Oregon from Louse Creek in the south to Grave Creek in the north. There are 17 GLO surveyed points of interest (POI) along the JR in Hugo's area of interest.²

SOLDIER CREEK POI

Road POI Name Soldier Creek³ ■ JA-2
POI ID Code OR-AT-00-35-05-W30-S-JA-02

1854 GLO Survey Notes for POI Page 54: West Line Township 35 South of Range 5 West, South on West Boundary Sec 30 Var 19"00'East

Chains

15.49 B [Black] Oak 10" dia [diameter]
33.75 Wagon Road from Willamette to Gold Valley River leave S60E & N46W [33.75 chains = 2,227.5]
 40.00 Set 1/4 Sec Post [40 chains = 2,640']
 80.00 Set Post Cor of Secs 13, 14, 23, & 24 [80 chains = 5,280']

Latitude & Longitude of POI³

42° 29' 59" North Latitude
 123° 20' 46" West Longitude

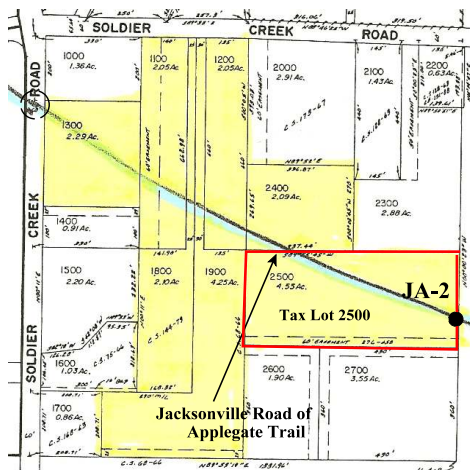
Located With GPS and Bearing & Distance/Interpretative Sign Yes. GPS located with permission by a wooden stake on January 26, 2010. GLO JA-2 refined location 253 feet 180" azimuth along section line from NE property monument (C.S. No. 1991-110).

1. Hugo Neighborhood. 2009 *Hugo's Applegate Trail GLO Points of Interest*. Brochure 1 in Applegate Trail GLO Surveys Series. Hugo, OR.

Diaries, Journals, & Reminiscences¹

Wagon Train Leader Levi Scott reported conditions for the 1846 emigrants at Louse Creek.

"The second day after we crossed Rogue River, we came to a place where the road cutters had done nothing, and it was impossible for us to pass with the wagons. So the train was brought to a halt. I went forward, and after searching for a long time I found a place where we could pass by cutting



through the thick bushes for about a furlong. The place where the horse trail passed was too rough, and could not easily be made passable for wagons. We went to work on the line I had blazed out,

and cut our way through the woods, which brought us out near the Tetalum, or Louse Creek, as it is now called, by the realistic and unpoetical people who live along its banks."

Differential Vegetation was located on the ground NW of JA-2 along GLO course of *Trail* on TL 2,500.

2. Hugo Neighborhood. 2009 *Hugo's Jacksonville Road Of Applegate Trail Points of Interest*. Brochure 2 in Applegate Trail GLO Surveys Series. Hugo, OR

3. 1856 General Land Office Field Survey Sub-Committee, Hugo Emigrant Trails Committee, Hugo Neighborhood Association & Historical Society. February 10, 2006. *General Land Office Field Survey Notes: Hugo's Applegate Trail Segments*. Hugo, OR.

General Land Office (GLO) & County Surveys (C.S.) & Maps¹

Aerial Photos The 1939 and 1959 aerial photos record the old road for over .5 miles in section 25 NW of JA-2. The 1959 photo clearly shows the *Trail* along the GLO road course on both sides of JA-2 in sections 25 and 30.

Metal Detection Work Not yet; with permission.

Stakeholders JA-2 is located on private property.

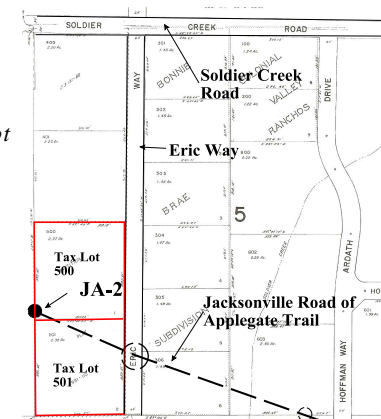
Laura L. Canada
 2.37 Ac. TL 500, Sec. 30BC, T.35S., R.5W., W.M.

Warren & Janet P. Kendall
 4.55 Ac. TL 2,500, Sec. 25A, T.35S., R.6W., W.M.

OCTA Trail Classification Class ③ Verified Trail.
Coherence Rule Linear Uniformity. Yes
Corroborative Rule Confirming Evidence. Yes
Collateral Rule Physical/Topo Evidence. Yes
Correlation Rule Overall Agreement. Yes

Be Respectful *Do not trespass. JA-2 is located on private property not open to the public.*

Want more information?
 Contact the *Hugo Neighborhood*.



Hugo Emigrant Trails Committee

Hugo is blessed with a rich heritage of historic roads, rough though they were. The *Hugo Emigrant Trails Committee* was formed to bring together all those who want to learn more about the early transportation in the area, from the casual admirer to the dedicated researcher. Its aim is to collect and record information about Hugo's emigrant trails, especially its two historic 1850s General Land Office mapped roads of the Applegate Trail, and to share this information (e.g., through *Hugo History Day*, talks, hikes, group visits, training exercises, workshops, publications, web sites, etc.).

Karen Rose, Co-Project Leader
Mike Walker, Co-Project Leader

Diaries, Journals & Reminiscences SubCommittee

Karen Rose
Janet McKy
Kelly & Berneata Rarey
Glen Campbell
Norm Tieman
Joe & Leta Neiderheiser
Kristen Boyce
Kathy Burkey
Penny Shipley
Mike Walker

General Land Office Field Survey SubCommittee

Glen Campbell
Jim & Rene Ford
Malcolm Drake
Joe Neiderheiser
Kelly Rarey
Mike Walker

Hugo Neighborhood Association & Historical Society's Mission

This information brochure is one of a series of documents published by the Hugo Neighborhood Association & Historical Society (*Hugo Neighborhood*). It is designed to be shared with neighbors for the purpose of helping protect our rural quality of life by promoting an informed citizenry in decision-making. The *Hugo Neighborhood* is an informal nonprofit charitable and educational organization with a land use and history mission of promoting the social welfare of its neighbors.

Land Use & History

The *Hugo Neighborhood's* land use mission is to promote Oregon Statewide Goal 1 — Citizen Involvement, and to preserve, protect, and enhance the livability and economic viability of its farms, forests, and rural neighbors. It will act, if requested, as a technical resource assisting neighbors to represent themselves.

Its history mission is to educate, collect, preserve, interpret, and research its local history and to encourage public interest in the history of the Hugo area.

Volunteer membership dues are \$10.00 annually per family and normally used for paper, ink, envelopes, publications and mailings.

Hugo Neighborhood

3388B Merlin Rd # 195, Grants Pass, Oregon 97526
541-471-8271

Email: hugo@jeffnet.org

Web Page: <http://jeffnet.org/~hugo/>

Edited by Jean Boling, Jim & Rene Ford, Warren Kendall,
Joe Neiderheiser, Kelly Rarey, & Mike Walker

JR Of Applegate Trail: Soldier Creek (JA-2)



Brochure 6 of Applegate Trail GLO
Surveys Brochure Series



*GLO SubCommittee Members With Warren
Kendall (tan coat) At Road Trace &
Vegetation Differential NW of JA-2*

March 15, 2010

**Hugo Emigrant Trails Committee
Hugo Neighborhood Association &
Historical Society
Josephine County Historical Society**