

Jacksonville Road (JR) Of Applegate Trail (Trail): Louse Creek Prairie (JA-1)¹

Hugo's Jacksonville Road (JA) from Willamette Valley to Jacksonville (route of the Applegate Trail) is located in Josephine County, Oregon from Louse Creek in the south to Grave Creek in the north. There are 17 GLO surveyed points of interest (POI) along the JR in Hugo's area of interest.²

LOUSE CREEK PRAIRIE POI

Road POI Name Louse Creek Prairie³ ■ JA-1
POI ID Code OR-AT-00-35-05-30/31-E-JA-01

GLO Survey Notes for POI Page 403: Subdivisions of T.35S., R.5W. WM. S89N43', East on true line between sections 30 & 31.

Chains

59.20 Branch 2 lks wide C NW [59.2 chains = 3,907.2'; 2 links = 15.84"]

63.00 **Road from Jacksonville** c NW & SE [63.00 chains = 4,158'; 4,158' - 3,907.2' = 250.8"]

80.20 To Sec Corn [80.02 chains = 5,293.2']

Latitude & Longitude of POI³

42° 29' 29.0" North Latitude
 123° 19' 52.5" West Longitude

Located With GPS Located with permission on January 12, 2010.

1. Hugo Neighborhood. 2009 *Hugo's Applegate Trail GLO Points of Interest*. Brochure 1 in Applegate Trail GLO Surveys Series. Hugo, OR.

2. Hugo Neighborhood. 2009 *Hugo's Jacksonville Road Of Applegate Trail Points of Interest*. Brochure 2 in Applegate Trail GLO Surveys Series. Hugo, OR.

3. 1856 General Land Office Field Survey Sub-Committee, Hugo Emigrant Trails Committee, Hugo Neighborhood Association & Historical Society. February 10, 2006. *General Land Office Field Survey Notes: Hugo's Applegate Trail Segments*. Hugo, OR.

Diaries, Journals, & Reminiscences¹

Stakeholder JA-1 is located on private property.

P. Soles

5.58 Acre Tax Lot 319, Sec. 31, T.35S., R.5W., W.M.

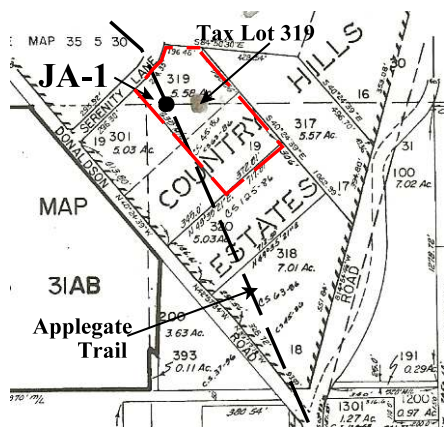
Wagon Train Leader Levi Scott reported conditions in 1846 for Louse Creek.

"The second day after we crossed Rogue River, we came to a place where the road cutters had done nothing, and it was impossible for us to pass with the wagons. So the train was brought to a halt. I went forward, and after searching for a long time I found a place where we could pass by cutting through the

thick bushes for about a 2 furlong. The place where the horse trail passed was too rough, and could not easily be made passable for wagons. We went to work on the line I had blazed

out, and cut our way through the woods, which brought us out near the Tetalum, or Louse Creek, as it is now called, by the realistic and unpoetical people who live along its banks."

Interpretative Sign JA-1 located with wooden stake January 12, 2010.



General Land Office (GLO) Surveys & Maps¹



Metal Detection Work Not yet; with permission.

OCTA Trail Classification Class ③ or Class ④ Verified Trail.

Coherence Rule Linear Uniformity. Yes
Corroborative Rule Confirming Evidence. Yes
Collateral Rule Physical/Topo Evidence. Yes
Correlation Rule Overall Agreement. Yes

Be Respectful *Do not trespass. JA-1 is located on private property not open to the public.*

Want more information? Contact an officer of the *Hugo Neighborhood* on how you can become involved in land use and history in the Hugo community.

Hugo Emigrant Trails Committee

Hugo is blessed with a rich heritage of historic roads, rough though they were. The *Hugo Emigrant Trails Committee* was formed to bring together all those who want to learn more about the early transportation in the area, from the casual admirer to the dedicated researcher. Its aim is to collect and record information about Hugo's emigrant trails, especially its two historic 1850s General Land Office mapped roads of the Applegate Trail, and to share this information (e.g., through *Hugo History Day*, talks, hikes, group visits, training exercises, workshops, publications, web sites, etc.).

Karen Rose, Co-Project Leader
Mike Walker, Co-Project Leader

Diaries, Journals & Reminiscences SubCommittee

Karen Rose
Janet McKy
Kelly & Berneata Rarey
Glen Campbell
Norm Tieman
Joe & Leta Neiderheiser
Kristen Boyce
Kathy Burkey
Penny Shipley
Mike Walker

General Land Office Field Survey SubCommittee

Glen Campbell
Jim & Rene Ford
Malcolm Drake
Joe Neiderheiser
Kelly Rarey
Mike Walker

Hugo Neighborhood Association & Historical Society's Mission

This information brochure is one of a series of documents published by the Hugo Neighborhood Association & Historical Society (*Hugo Neighborhood*). It is designed to be shared with neighbors for the purpose of helping protect our rural quality of life by promoting an informed citizenry in decision-making. The *Hugo Neighborhood* is an informal nonprofit charitable and educational organization with a land use and history mission of promoting the social welfare of its neighbors.

Land Use & History

The *Hugo Neighborhood's* land use mission is to promote Oregon Statewide Goal 1 — Citizen Involvement, and to preserve, protect, and enhance the livability and economic viability of its farms, forests, and rural neighbors. It will act, if requested, as a technical resource assisting neighbors to represent themselves.

Its history mission is to educate, collect, preserve, interpret, and research its local history and to encourage public interest in the history of the Hugo area.

Volunteer membership dues are \$10.00 annually per family and normally used for paper, ink, envelopes, publications and mailings.

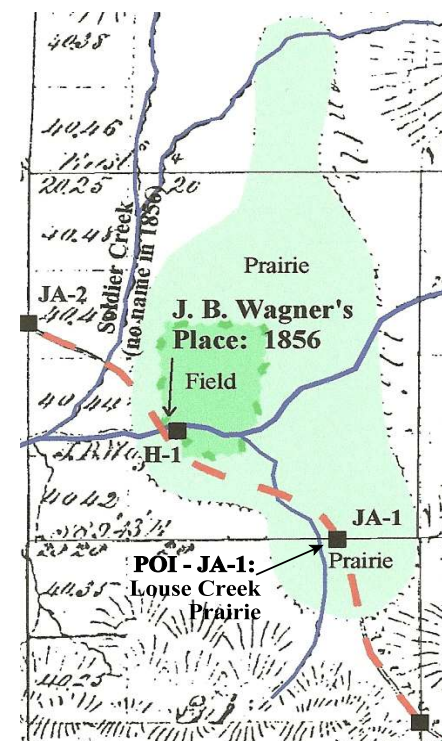
Hugo Neighborhood, 3388B Merlin Rd # 195,
Grants Pass, Oregon 97526, 541-471-8271
Email: hugo@jeffnet.org
Web Page: <http://jeffnet.org/~hugo/>

Edited by Jean Boling, Malcolm Drake, Jim & Rene Ford, Joe Neiderheiser, P. Soles, Kelly Rarey, & Mike Walker

JR Of Applegate Trail: Louse Creek Prairie (JA-1)



Brochure 5 of Applegate Trail GLO
Surveys Brochure Series



POI JA-1: Louse Creek Prairie
Base Map: 1856 GLO Map

March 10, 2010

Hugo Emigrants Trails Committee
Hugo Neighborhood Association &
Historical Society
Josephine County Historical Society