

## Applegate Trail (*Trail*): 1846 - 1856<sup>1-2</sup>

**Western Oregon's first roads** were the paths which the Indians made and traveled. After the trappers arrived many of the old paths were widened, first for the whites man's pack trains, and then for emigrant wagons.<sup>1</sup>

**1840s Trail Diarists<sup>2</sup>** In the Hugo region diarists noted only three places they had to cut brush from Louse Creek to Grave Creek: 1. Louse Creek, 2. Jumpoff Joe Creek, and 3. north side of Grave Creek Hills.

**Emigrant Time Of Travel: 1846 - 1856** Travel in the Rogue Valley was during the late summer when the land was bone dry until the fall rains came in late October or November. On October 26, 1846 diarist Pringle wrote: "*The wet season commenced the second day after we started through the mountains.*"

**Emigrant Wagon Traffic Direction: 1846 - 1856** The Rogue Valley was hostile to pioneers prior to Native American removal in 1856 to distant reservations. This meant that, except for anomalies like the 1949 - 1950 gold rush to California, the 1851 discovery of gold around Jacksonville, and the first donation land claimers, almost all traffic on the *Trail* in the Hugo region was one-way north to the Willamette Valley. These emigrants were not building or improving roads. Where necessary they were cutting a trail through the wilderness to get beyond, and they did not intend to come back.

**DLC Act 1850 - 1855** During this time white settlers began to arrive in the Rogue Valley especially on the larger better bottom lands in what would become Jackson County.

## Out Of The Winter Mud: After 1856 & Pre-Automobile In JO CO: 1903

**Roads Simply Cleared And Used: 1846 - 1856** Except for the 1853 Military Road at Mt. Sexton most roads in the Hugo region were not so much built as simply cleared and used.

**Wagon Roads After 1856** Roads remained simple with a little digging on the sides of hills as the road locations moved away from the winter bottom lands that had been dry and relatively open during the one-way 1846 - 1856 migrations north. Where side hills in the area permitted it these roads were a little higher than the surrounding bottom lands with draining occurring when it rained. Even then wagons in the country often meant struggling through deep ruts or, in wet weather, through rivers of mud.

The following historical and present roads are areas where the wagon roads of the *Trail* evolved away from the bottom lands which turned into a quagmire of axle-deep mud during the winter toward the toes of slopes/hills.

### Jacksonville Road of Trail

- Donaldson Road West of GLO Trail JA-1 to JA-2
- Gun Club Road/Highland Avenue At Harris Creek
- East & West of JA 1855 GLO Trail At JA-8 & Schoolhouse Creek
- Monument Drive At Schoolhouse Creek
- East of JA 1855 GLO Trail Between JA-9 to JA-10A
- Monument Drive At JA-10B
- East of Monterico Drive At JA-10C
- Hugo Road East of Upper Bannister Creek
- 1853 Military Road West of Maple Creek
- Sunny Valley Loop Road at JA-17B & JA-17-C

## General Land Office (GLO) & Donation Land Claim (DLC) Surveys, & 1895 JO CO Map<sup>3</sup>

### Illinois Valley Road of Applegate Trail

- West of Bannister Creek At IV-5 to IV-6
- Oxyoke Road West of Bannister Creek (Photo 1)

**Be Respectful** *Do not trespass. Most of the sites of the Trail are located on private property not open to the public.*



**More Information** Contact a member of the Hugo Emigrant Trails Committee.

1. General Surveyor Office of Oregon. Subdivision Lines For 1856 Map (T.34., R. 6. W., Willamette Meridian). Field Notes. Surveyor Luke G Hyde. Contract February 19, 1855; Surveyed March 31, 1856; Hugo Neighborhood. 2006. *Hugo's Applegate Trail Field Notes*. Brochures 10A - 10D in Emigrant Trail Series. Hugo, OR.

2. Rose, Karen. 2006. Hugo Emigrant Trails Committee, Hugo Neighborhood Association & Historical Society. *Hugo's Applegate Trail Diaries, Journals & Reminiscences Project*. "Yellow Book Project" For Participants of the Diaries, Journals and Reminiscences Sub-Committee. Hugo, OR. Hugo Neighborhood. 2005 *Diaries & Journals*. Brochure 11 in Emigrant Trail Series. Hugo, OR; Hugo Neighborhood. 2006 *Diaries, Journals & Reminiscences Sub-Committee*. Brochure 11B in Emigrant Trail Series. Hugo, OR.

3. Koch, Joseph, Draughtsman. 1895 Official Josephine County, Oregon. Map. Scale 1 inch = 1 mile. Meston - Dygert Book M'F'G. Portland, OR.

---

---

## Hugo Emigrant Trails Committee

Hugo is blessed with a rich heritage of historic roads, rough though they were. The *Hugo Emigrant Trails Committee* was formed to bring together all those who want to learn more about the early transportation in the area, from the casual admirer to the dedicated researcher. Its aim is to collect and record information about Hugo's emigrant trails, especially its two historic 1850s General Land Office mapped roads, and to share this information (e.g., through *Hugo History Day*, talks, hikes, group visits, training exercises, workshops, publications, web sites, etc.).

Karen Rose, Co-Project Leader  
Mike Walker, Co-Project Leader

### *Diaries, Journals & Reminiscences SubCommittee*

Jean Boling  
Glen Campbell  
Janet McKy  
Joe Neiderheiser  
Leta Neiderheiser  
Berneata Rarey  
Kelly Rarey  
Karen Rose  
Mike Walker

### *General Land Office Field Survey SubCommittee*

Terall Blalock  
Glen Campbell  
Jim Ford  
Rene Ford  
Joe Neiderheiser  
Kelly Rarey  
Mike Walker  
Chris Wytcherley

---

---

## Hugo Neighborhood Association & Historical Society's Mission

This information brochure is one of a series of documents published by the Hugo Neighborhood Association & Historical Society (*Hugo Neighborhood*). It is designed to be shared with neighbors for the purpose of helping protect our rural quality of life by promoting an informed citizenry in decision-making. The *Hugo Neighborhood* is an informal nonprofit charitable and educational organization with a land use and history mission of promoting the social welfare of its neighbors.

### Land Use & History

The *Hugo Neighborhood's* land use mission is to promote Oregon Statewide Goal 1 — Citizen Involvement, and to preserve, protect, and enhance the livability and economic viability of its farms, forests, and rural neighbors. It will act, if requested, as a technical resource assisting neighbors to represent themselves.

Its history mission is to educate, collect, preserve, interpret, and research its local history and to encourage public interest in the history of the Hugo area. Volunteer membership dues are \$10.00 annually per family and normally used for paper, ink, envelopes, publications and mailings.

### *Hugo Neighborhood*

3388B Merlin Rd # 195, Grants Pass, Oregon 97526  
541-471-8271  
Email: hugo@jeffnet.org

Edited by Jean Boling,  
Karen Rose, & Mike Walker

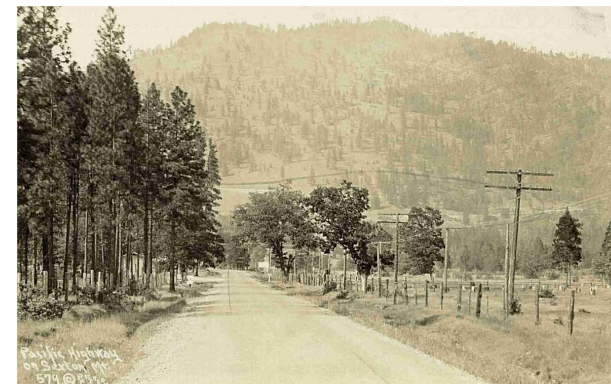
---

---

## Applegate Trail Evolves Out Of The Mud: After 1855 - 1856



Brochure 4F of Applegate Trail GLO  
Surveys Brochure Series



*Photo 1. U.S. 99: 1920s  
Became Oxyoke Road*

**August 28, 2010  
Updated October 18, 2011**

**Hugo Emigrant Trails Committee  
Hugo Neighborhood Association &  
Historical Society**

**Josephine County Historical Society**