

Walker House Of Applegate Trail (*Trail*): JA-H-5¹

Hugo's Applegate Trail houses are located in Josephine County, Oregon from Louse Creek in the south to Grave Creek in the north. There are six GLO surveyed points of interest (POI) along the *Trail* in Hugo's area of interest.² The Walker house was not a GLO POI.

WALKER HOUSE POI

House POI Name Walker House³ ■ JA-H-5.

POI ID Code OR-AT-00-35-06-02-**-**JA-H-5.

GLO Survey for House POI No GLO survey notes.

Josephine County Road Survey: 1874⁴ Parts of the *Trail* were surveyed by Josephine County in 1874. The 1874 Jumpoff Joe Creek bridge crossing is in the same location as it was in 1856. The survey records:

- **north end of Bridge over Jump off Joe**
- **Saw Mill** [first Walker's saw mill, then Neeleys; mill is 165 feet south of bridge]
- **Mrs. Neeleys** [Mrs. Neeley's house is 363 feet south of bridge]

GLO Survey Notes for JA-9 POI Page 24.

Subdivisions of Township N_o 35 South of Range N_o 6 W, West on True Line between sections 2 & 11.

Latitude & Longitude of ■ JA-9 POI Calculated⁵

42° 32' 59" North Latitude
123° 22' 33" West Longitude

Diaries, Journals, & Reminiscences¹

Lat. & Long. of POI Calculated³ The 1874 Neeley house could well be the Walker house. Plot 363' south of 1874 bridge on 1998 Merlin Quadrangle.

?? North Latitude Need Calculation.

?? West Longitude Need Calculation.

1866 DLC On August 7, 1866 Augustus L. Walker was issued a donation land claim (DLC) patent for 164 acres in Hugo, Oregon (Patent No. 861).

Augustus L. Walker - DLC

Certificate Number: 861
Notification Number: 700
Claimant's Name: August L. Walker
County in Oregon: Josephine County
Date & Place of Birth: 1829, Henderson County, Kentucky
Arrival In Oregon: October 12, 1852
Date Claim Settled: March 1, 1855
Patent by President August 7, 1866
Andrew Johnson

1860 Census Walker's Mill Precinct, Josephine County, Oregon

W. R. Walker	Male	Farmer	KY	1824	35 yrs
A. L. Walker	Male	Farmer	KY	1829	31 yrs
A Taylor	Male	Farm Labor	OH	1838	22 yrs
J. T. Lane	Male	Farm Labor	MO	1833	27 yrs
Starling Moore	Male	Farm Labor	KY	1827	33 yrs
G. W. Lane	Male	Farm Labor	DC	1820	40 yrs
Ah Youck	Male	Miner	China	1827	33 yrs

Walker House POI Located With GPS Not yet.

General Land Office (GLO) Surveys & Maps¹

Augustus L. and Wesley R. Walker were white native citizens of the United States both born in Henderson County, Kentucky. They were single men when they arrived in Oregon October 12, 1852. Each brother ending up with a patent to 160 acres on Jumpoff Joe Creek in northern Josephine County. They were farmers and miners and started the tradition of farming on this bottom land section of Jumpoff Joe Creek. Augustus' DLC was located on the *Trail*.

Stakeholder WTW Development LCC
Tax Lot 1100, 109.81 acres

**Interpretative Sign; Metal Detection Work;
Modern Survey** Not Yet

Be Respectful *Do not trespass. JA-H-5 is located on private property not open to the public.*

Want more information? Contact an officer of the *Hugo Neighborhood* on how you can become involved.

1. Hugo Neighborhood. 2009 *Hugo's Applegate Trail GLO Points of Interest*. Brochure 1 in Applegate Trail GLO Surveys Series. Hugo, OR.

2. Hugo Neighborhood. 2009 *Hugo's Illinois Valley Road Of Applegate Trail Points of Interest*. Brochure 3 in Applegate Trail GLO Surveys Series. Hugo, OR.

3. 1856 General Land Office Field Survey Sub-Committee, Hugo Emigrant Trails Committee, Hugo Neighborhood Association & Historical Society. February 10, 2006. *General Land Office Field Survey Notes: Hugo's Applegate Trail Segments*. Hugo, OR.

4. Hugo Neighborhood. September 2007, *Jumpoff Joe Creek Bridge: 1924 - 2007*. Pages 15 & 28 - 29. Hugo, OR.

5. Hugo Neighborhood. 2009. *JR Of Applegate Trail: Pleasant Valley (JA-9)*. Hugo, OR.

Hugo Neighborhood Association & Historical Society's Mission

This information brochure is one of a series of documents published by the Hugo Neighborhood Association & Historical Society (*Hugo Neighborhood*). It is designed to be shared with neighbors for the purpose of helping protect our rural quality of life by promoting an informed citizenry in decision-making. The *Hugo Neighborhood* is an informal nonprofit charitable and educational organization with a land use and history mission of promoting the social welfare of its neighbors.

Land Use & History

The *Hugo Neighborhood's* land use mission is to promote Oregon Statewide Goal 1 — Citizen Involvement, and to preserve, protect, and enhance the livability and economic viability of its farms, forests, and rural neighbors. It will act, if requested, as a technical resource assisting neighbors to represent themselves.

Its history mission is to educate, collect, preserve, interpret, and research its local history and to encourage public interest in the history of the Hugo area.

Volunteer membership dues are \$10.00 annually per family and normally used for paper, ink, envelopes, publications and mailings. Send us your e-mail address if you want to know what we are doing.

Email: hugo@jeffnet.org
Web Page: <http://jeffnet.org/~hugo/>
Edited by Jean Boling, Karen Rose,
Kelly Rarey, & Mike Walker

HNA&HS Officers

Hal Anthony, Outreach Chair
3995 Russell Road
Grants Pass, Oregon 97526

Wayne McKy, Chair
6497 Hugo Road
Grants Pass, Oregon 97526

Mike Walker, Education Chair
3388B Merlin Rd #195
Grants Pass, Oregon 97526

Josephine County Historical Society

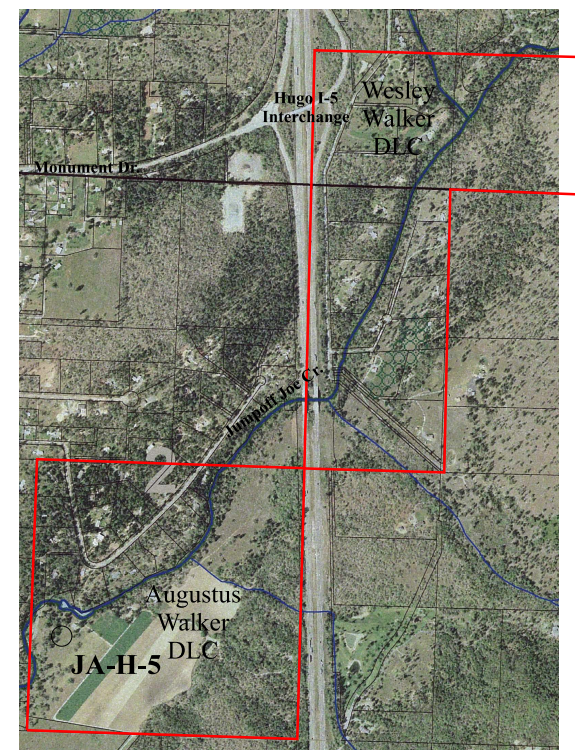
Jean Boling, Historic Sites Chair
Josephine County Historical Society
512 SW 5th Street
Grants Pass, Oregon 97526

Brochure 36, Applegate Trail POI Series - HNA&HS 2009 - 96
C:\Documents and Settings\mike\My
Documents\Genealogy\Applegate Trail GLO Surveyed
Points\House JAH5 Walker House\BROCHURE 36 Walker
House_JAH5 102009.wpd

Walker House Of Applegate Trail: JA-H-5



Very Draft For Review & Editing
Brochure 36 of Applegate Trail GLO
Surveys Brochure Series



*August and Wesley Walker's 1855 DLCs
Located on 2002 Aerial Photograph*

October 20, 2009

**Hugo Emigrant Trails Committee
Hugo Neighborhood Association &
Historical Society
Josephine County Historical Society**